



# Thameside Theatre Technical Specification (v03.26)

## Contents

Thameside Theatre.....	1
Technical Specification (v03.26) .....	1
Contact information: .....	4
Loading to the stage .....	4
Load In/Out.....	4
Internal Lift Dimensions: .....	4
Parking .....	4
Stage Information .....	5
Stage Dimensions .....	5
Max Height on Stage .....	5
Stage Performance Space .....	5
Curved Apron Stage Performance Space: .....	5
Proscenium Arch: .....	5
Stage Wing Space: .....	5
Stage Power .....	5
Auditorium Information.....	5
Auditorium Dimensions: .....	5
Orchestra Pit: .....	5
Accessibility: .....	5
Dressing Rooms.....	5
Wardrobe.....	5
WiFi .....	6
Lighting Equipment and Information.....	6
Mix Position:.....	6
Control: .....	6
Circuits:.....	6
Stage Bars: .....	6
Front of House Bars:.....	6
DIPS:.....	6
Generic Fixtures: .....	6
LED Fixtures:.....	6
Moving Heads: .....	6
Effects:.....	6
House Lights: .....	6
Sound Equipment and Information .....	6
Mix Position:.....	6
Stage Box/Multicore: .....	6
Mixing Desk: .....	6
Front of House PA: .....	6
Monitoring:.....	7
Playback: .....	7
Foyer PA System: .....	7
Wired Microphones:.....	7
Radio Microphones:.....	7
DI Boxes:.....	7
Microphone Stands/Music Stands: .....	7
Audio Visual .....	7
Projector:.....	7
Stage Management .....	7
Staging/Risers:.....	7
Communications:.....	7
Tabs, Bobbins, Cloth Clips:.....	7
Scenic .....	8
Access Equipment .....	8
Quick Change Area .....	8

House Keeping .....	8
Local Information .....	8
Nearby Food:.....	8
Nearby Equipment:.....	8
Nearby Hotel: .....	8
Medical:.....	8
Venue Pictures.....	8
Thameside Theatre – Seating Plan v03.26 .....	9
Thameside Theatre Lighting Plot .....	10
Tab & Track Plot.....	11
Theatre Stage Measurements .....	12
Thameside Theatre Full Stage .....	13
Dressing Room Plans .....	14

## Contact information:

- **Theatre Manager:** Dianna Ferry [dferry@thurrock.gov.uk](mailto:dferry@thurrock.gov.uk)
- **Technical Manager:** Phil Pattie [philip.pattie@thurrock.gov.uk](mailto:philip.pattie@thurrock.gov.uk)
- **FoH Manager:** Ann McEwen [amcewen@thurrock.gov.uk](mailto:amcewen@thurrock.gov.uk)
- **Box Office:** [thameside.theatre@thurrock.gov.uk](mailto:thameside.theatre@thurrock.gov.uk) 0345 3005264

Please contact the technical manager to discuss any technical requirements or hire of equipment prior to your hire.

## Loading to the Stage

### Load In/Out

Loading to the stage from the ground floor is carried out via a stage lift accessed from Titan Road (RM17 5DS, What3words: suffer.bikes.camp). The lift is loaded through a ground-level door and can be unloaded either at the 2nd floor dressing rooms or the 3rd floor stage (SL) via a door on the opposite side of the lift car. Please note that this door has an opening width that is 6 cm narrower. Important: This is a goods-only lift. Under no circumstances should personnel travel in the lift.

### Internal Lift Dimensions:

Width: 2.36m  
Depth: 2.79m  
Height: 1.78m  
Diagonal: 3.05m  
Max Door Opening: 1.61m (Ground floor)  
Max Door Opening: 1.55m (2nd & 3rd floor)

Height from ground floor road to lift base: 88-93cm.  
We have one metal ramp if required to bridge between vehicle tail lift and concrete ledge.

### S.W.L of lift: 7000 pounds/ 3100Kg

Carrying larger items via the fire escape staircase is possible but not recommended. A risk assessment must be provided in advance and suitable crew numbers booked.



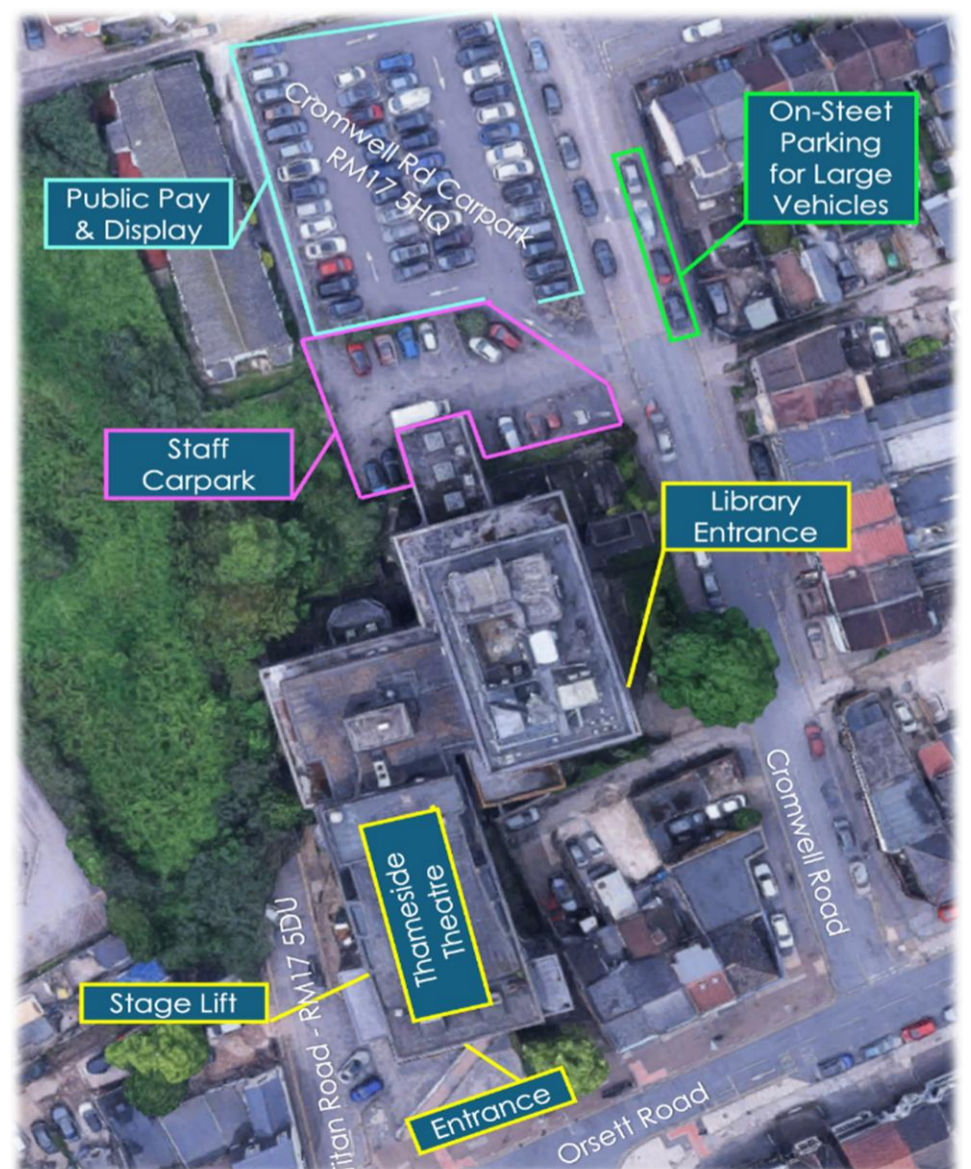
## Parking

Once unloaded, no vehicles are permitted to park outside the lift loading bay on Titan road. The traffic wardens are very active in the area, and will ticket any vehicles in this area.

When you turn left out of Titan road, you will drive past the front of the building, where you will then turn first left onto Cromwell road taking you to on road parking spaces, a public pay and display (with no height barriers) and our staff carpark.

As the staff carpark is occupied by all building staff and contractors, we cannot guarantee spaces will be available during normal building hours.

The pay & display carpark has 50 spaces and charges between the hours of 9am – 6pm Mon – Sat, free outside of these hours.



## Stage Information

Flat floor - Black Treated Plywood.

Access to the auditorium from the stage is via a 3-tread stair, centre stage. Offstage access via backstage steps through house left doorway. There is a crossover behind the Cyclorama wall to access both sides of stage.

**Stage Dimensions:** (including wing space):

Width: 12.6m

Depth: 6.9m / 9.2m including apron

Height of Stage (from auditorium floor): 0.5m

**Max Height on Stage** (From stage floor):

Height: 3.7m to lowest lighting bar

Max flattage/set height: 3.2m

**Stage Performance Space** (at its narrowest):

Width: 9.1m

Depth: 6.9m / 7.9m including apron

**Curved Apron Stage Performance Space:**

Width: 9.1m

Depth: 2.3m at stage centre, 1m downstage corners

**Proscenium Arch:**

Width: 9.1m

Height (border out): 3.85m

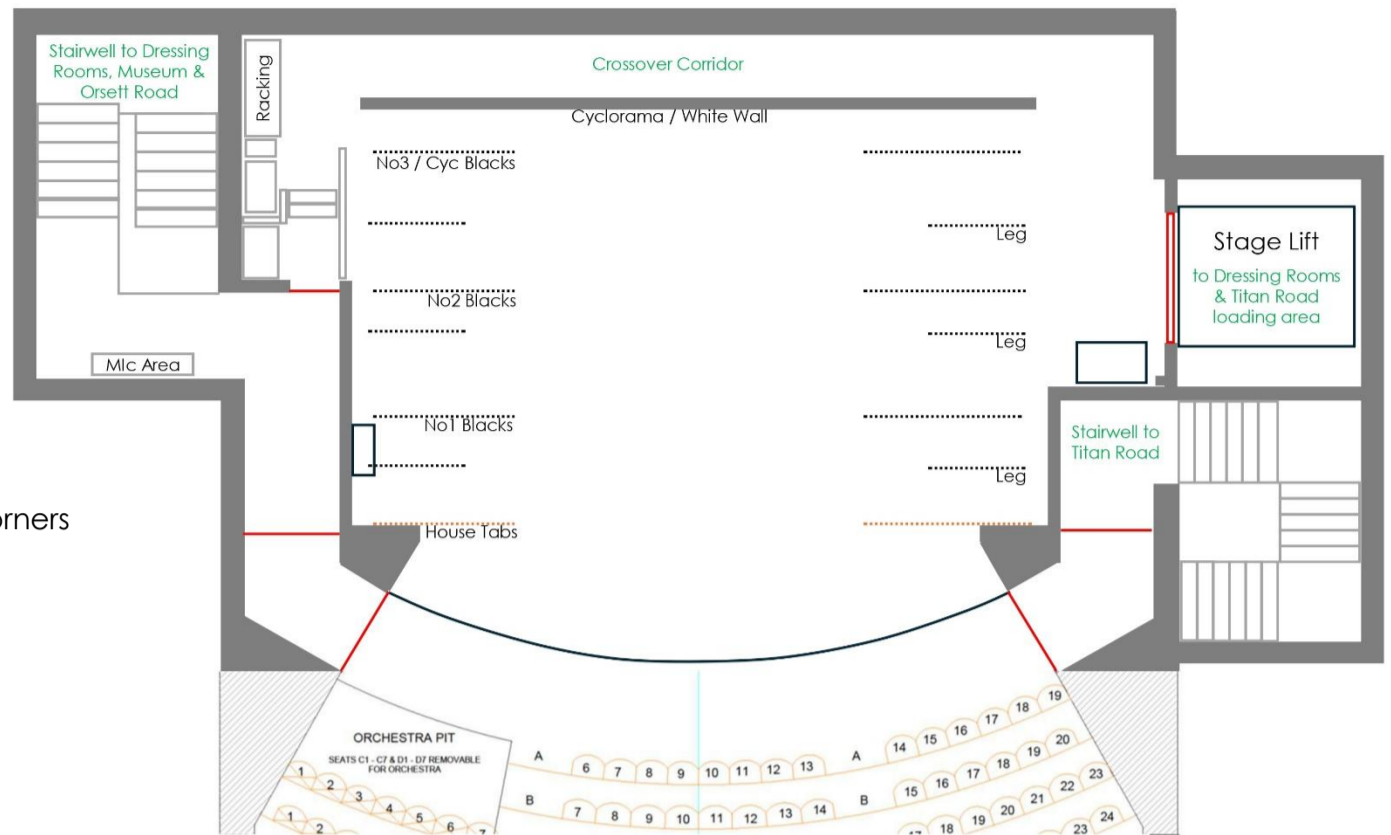
Height (border in): 2.85m

**Stage Wing Space:**

Stage Right: 1.5m

Stage Left: 2m

Leg Cover: 1m



## Stage Power

Stage left hosts a 32A 3ph power cable. We have a distribution box which outputs; 1x 32A 3ph, 3x 32A 1ph, 3x 16A 1ph. Please note: we do not stock any power cables above 13A.

13A sockets are situated in both wings. Please speak to the duty technician before unplugging anything already installed.

## Auditorium Information

Red carpeted floor with black stair nosing's highlighted by red LED and yellow trim.

Tiered seating – Capacity 316.

**Auditorium Dimensions:** (Approx.)

Width: 11m House Front / 14.8m House Rear

Depth: 14m

Max Height: 5.2m House Front / 2.4m House Rear (under technical suite)

**Orchestra Pit:**

There is no orchestra pit however seats C1-7 & D1-7 can be removed to accommodate up to 7 musicians within the auditorium. This must be arranged in advance and seats must be removed from sale and audience sight lines/noise considered.

**Accessibility:**

There are 3 disabled parking spaces available on Titan road at the front of the building. Two public lifts available to access 2<sup>nd</sup> floor dressing rooms via stage door and the 3<sup>rd</sup> floor foyer, bar area and auditorium. The rear row of auditorium seats (Row O) are removable to accommodate wheelchair users. Unfortunately, there is no step free access onto the stage from the auditorium or 2<sup>nd</sup> floor dressing rooms.

## Dressing Rooms

There are five dressing rooms located on the second floor. Each of these have video relay, show relay, paging system, mirrors, clothes rail, dressing tables and chairs. They share separate male and female toilets with showers not accessible by the public. We do not provide towels.

Dressing rooms 1, 2 and 3/4 have daylight, washbasins and running water (not drinkable).

Dressing room 3/4 has a fridge, kettle and microwave.

Additional dressing areas may be possible in the museum space on the first floor and second floor office but this must be prearranged with the theatre manager and will incur a charge.

Dressing Room	Name on Door	Approx. Dimensions	Max Adult Occupancy
1	'Sleeping Beauty'	3.4m x 3.4m	8
2	'Cinderella'	2.7m x 4m	8
3/4 (two rooms combined)	'Aladdin/Beauty & the Beast'	5.3m x 4m	18
5	'Snow White'	5.2m x 3.8m	12
6	'Peter Pan'	5.2m x 3.6m	12
2 <sup>nd</sup> Floor Office	-	4.8m x 4.4m	18
Museum	-	-	100

## Wardrobe

We provide an iron and ironing board but have no onsite laundry facilities. There is a 24 hour laundrette nearby: Baylees Laundrette, RM17 5NH

## WiFi

Network Name: 'TBC Guest', Password: 'Thurrock'

## Lighting Equipment and Information

All lighting bars are static and there are no flying points in the venue. We have one hemp bar US which can hang banners – SWL 30Kg. All available lighting and effects equipment listed below are included in your hire price.

### Mix Position:

Lighting mix position is normally in our enclosed technical suite located one floor above the auditorium, but if required, can be situated beside our/touring sound desk (house rear centre).

### Control:

1x ETC Element 2 with two external touch screens

### Circuits:

3x ADB Eurorack Dimmers (24x 10A channels each)  
72x 2kw circuits

### Stage Bars:

LX Bar 1 –	8x 15A dimmable circuits (I.W.B), 2x 15A non-dims (I.W.B)	SWL 120Kg
LX Bar 2 –	7x 15A dimmable circuits (I.W.B), 2x 15A non-dims (I.W.B)	SWL 120Kg
LX Bar 3 –	2x 15A dimmable circuits (I.W.B), 4x 15A non-dims (I.W.B)	SWL 120Kg
LX Bar 4 –	4x 15A dimmable circuits (I.W.B), 5x 15A non-dims (I.W.B)	SWL 120Kg
LX Bar 5 –	1x 15A non-dims	SWL 120Kg

### Front of House Bars:

FOH 1 –	7x 15A non-dims (I.W.B) – Not accessible without scaff tower	SWL 140Kg
Perch HL –	2x 15A dimmable circuits, 1x 15A non-dims	SWL 80Kg
Perch HR –	2x 15A dimmable circuits, 1x 15A non-dims	SWL 80Kg
Office Bar –	10x 15A dimmable circuits (I.W.B), 1x 13A non-dims	SWL 120Kg

### DIPS:

Mid S-Left - 3x 15A dimmable circuits, 1x 15A non-dims (3 in use for standard lighting rig)  
Mid S-Right - 2x 15A dimmable circuits, 2x 15A non-dims (4 in use for standard lighting rig)  
Up S-Right – 3x 15A dimmable circuits, 1 x 15A non-dims(1 in use for standard lighting rig)

### Generic Fixtures:

7x ETC Source4 Zoom 15-30°	3x Selecon Acclaim Zoomspot 18-34°
7x ETC Source4 50°	3x ETC Source4 Jr Zoom 25-50°
4x PAR64 Long Nose (CP62)	

### LED Fixtures:

4x ETC Colorsource CYC	5x Sagitter SDJ HTZ Zoom Par
13x ETC Colorsource Par	13x ETC Colorsource Spot
2x Chauvet LED Followspot 120ST	4x Betopper LPC010 Par

### Moving Heads:

8x Betopper 7x40W RGBW 4in1Bee Eye LM0740	2x Chauvet Intimidator Spot 355 IRC (90W)
4x Uking ZQ02341 Beam Pro (120W)	

### Effects:

3x Thunderbolt FX Cold Spark Machine	2x Chauvet Funfetti Confetti Machine
1x ADJ Entour Chill Low Smoke Machine (800W)	1x ADJ Entour Faze Haze Machine (450W)
2x Uking ZQ10142 Bubble/Haze Machine (1500W)	2x 5m LED Tape (apron stage edge)
1x 50cm Mirror Ball with Motor	2x Pinwheel Balls
1x Showtec Sunstrip Active MKII	1x LEDJ Starcloth 8x4.5m
2x Showtec 5ft UV tubes	

### House Lights:

The house lights can be operated manually via switches located in the auditorium and technical suite, or controlled via DMX (Universe 1, Channels 1–6). Please ensure the house lights are brought up whenever the audience is entering or exiting the stage during the performance.

## Sound Equipment and Information

All available sound equipment listed below is included in your hire price **excluding** radio microphones which are £25+VAT per mic/day.

### Mix Position:

Sound mix position is located within the auditorium (house rear centre). 8x2ft riser on tall legs with 1x 8way 13A block situated at this position. Wireless comms headset will be provided to sound technician. If touring mixer, venue left, right, sub and stage monitor/front fill feed will be provided on XLRs.

### Stage Box/Multicore:

Analogue: Venue has stage box mid stage left wing to mix position. Up to 21 available inputs and 4 outputs (8 if not using venue PA & monitors).  
Digital: Venue has 1x 50m cat 6 cable reel on stage to mix position available to use with touring digital stage box.  
Touring: Cable hooks installed house right fire exit for touring multicore/cat runs. (Approx. 30m to DSL).

### Mixing Desk:

1x Allen & Heath QU32 Digital Mixer

### Front of House PA:

2x JBL EON615 15" Active Top	2x EV ZXA1 12" Active Subwoofer
------------------------------	---------------------------------

### Monitoring:

4x The Box Pro Achat 104A 4" Active Speaker                      1x Pulse APS10a 10" Active Speaker  
\*Our monitors are not suitable for band use, please provide own or advise ASAP to arrange external hire at a cost.

### Playback:

1x Macbook Pro, 2.3GHz Quad core i7 13" 2020, Qlab 5 (with video licence)

**Foyer PA System:** For smaller events, parties, open mic, comedy and foyer background music/announcements.

Mixing Desk: 1x Soundcraft EPM8 Analogue Mixer  
Outboard: 1x Behringer Virtualizer Pro effect processor  
Foyer PA: 2x Alto Professional TS210 10" Active Top                      2x EV ZXA1 12" Active Subwoofer

### Wired Microphones:

3x Shure SM58	2x Shure SM58 (with switch)
3x Shure SM57	5x Samson C02
4x Samson C05	2x Samson Q7
4x Audio Technica Pro45 (hanging/overhead mics)	2x TBone EM500
4x TBone CD65 (Snare/tom mics)	1x TBone BD300 (Kick Drum)

### Radio Microphones: \*Charged at £25+VAT/mic/day

4x Sennheiser EW-D SK (Headset) (S1-7 606.2-662MHz)	8x Sennheiser SK100 G4 (Headset) (606-648MHz)
2x Shure SM58 BLX2 K3E (Handheld) (606-630MHz)	2x Sennheiser XSW 1-835 (Handheld) (606-630MHz)
2x Sennheiser ASA 214 Antenna Distro and Paddles	1x ULS Antenna Distribution & Shark Fins (for EW-D SKs)
12x Pulse Headset Microphone MIC-300LJ Beige	12x Adjustable Mic Pack Belt Straps

### DI Boxes:

10x Behringer Ultra-DI100

### Microphone Stands/Music Stands:

6x K&M Tall Boom Microphone Stands	1x K&M Short Boom Microphone Stands
1x Round Base Straight Mic Stand	4x Table Top Mic Stands
2x Height Adjustable Conductor Music Stands	

## Audio Visual

For onstage projection, the projector is rigged on Bar 1 and projects onto the upstage cyclorama (white wall), with a maximum image size of approximately 6.8 m × 3.7 m.

The video source can be operated from either the SR prompt desk or the auditorium mix position via an HDMI connection.

### Projector:

1x Acer Predator Z650 (located Stage Bar 1)                      1x Epson MG850-HD (Foyer)

### Screen:

1x Stage Cyc (White Wall US)  
1x 8x4m Gauze available, but requires externally hired/toured projector placed in the technical suite

### Playback:

1x Macbook Pro, 2.3GHz Quad core i7 13" 2020, Qlab 5 (video licence)  
1x Sony BDP-S550 Bluray/DVD Player                      1x Sony BDP-S360 Bluray/DVD Player

### Outboard:

1x HDMI – CAT6 (1x sender, 1x receiver)                      1x 50m Cat 6 cable reel \*if not being used by the sound engineer

## Stage Management

Prompt desk is situated DSR and has a lamp, video relay monitor and paging mic to dressing rooms. Our theatre uses wireless comm headsets. There is an additional video relay monitor in MSL wing with a lamp and small desk.

### Staging/Risers:

10x Steel Deck, Black wooden deck, 1m x 1m	8x Steel Deck, Black wooden deck, 1m x 0.5m
1x Steps/Treads, Black birch plywood, 40cm height	12x Portable staging blocks with 30cm base, grey carpeted, 75.5cm x 75.5cm (Foyer)
20x 20cm legs	40x 40cm legs

### Communications:

8x Eartec ULHD-R wireless comms headsets                      4x Baofeng 5w UHF PMR Radios  
1x Tecpro Master Station for show relay & dressing room calls (located at prompt desk DSR)

### Tabs, Bobbins, Cloth Clips:

1x House Tabs,	Gold – Mechanically operated from SR or technical suite
1x Number 1 Tabs,	Black - Mechanically operated from SR or technical suite
1x Number 2 Tabs,	Black - Manual pulley SR (Red rope)
1x Number 3/CYC tabs,	Black - Manual pulley SR (Green rope)
1x LEDJ Starcloth 8x4.5m,	Black - US Swipe track 4
1x Gauze 8x4m,	White - Swipe
6x Legs & borders,	Black - Fixed

There are 4 swipe tracks available to hang hired/toured cloths. It is likely these cloths drop will need to be clipped.

Swipe 1: 4.35m drop  
Swipe 2: 4.35m drop  
Swipe 3: 4.40m drop  
Swipe 4: 4.35m drop

170x Hall Stage T60 Ball Raced Runner/Bobbin                      170x Cloth Clips

## Scenic

14x Stage weight 12.5Kg

10x Stage braces

## Access Equipment

1x Zarges Extendable Ladder

1x Zarges 11 Rung A Frame

1x Zarges 7 Rung A Frame

1x Zarges 5 Rung Step Ladder/A Frame

1x Scaff Tower (PASMA trained technicians only)

## Quick Change Area

The stage lift may be used as a quick-change area (SL); however, the internal shutter must remain open at all times to prevent the lift from moving. There is a light and a clothes rail and mirror can be provided with advanced request.

## House Keeping

Our fire alarm is a constant ringing bell. There is a red beacon at the rear of the auditorium and technical suite that will flash. In the event of an evacuation, please follow the instructions from our stage manager and follow them to our meeting point which is in front of the building on the pavement. The duty manager/duty technician will confirm when it is safe for the hirer/production to re-enter the building and once ready, the audience will be permitted to re-enter.

## Local Information

We are located a 5-minute walk to Grays town centre, Grays train station and a bank. 15 minute-drive will get you to Lakeside shopping centre.

## Nearby Food:

There is a Indian, kebab, Chinese, KFC, Subway, Burger King, Morrisons and corner shops within a 5-minute walk. Turn right out of the main entrance and first left onto the High street.

## Nearby Equipment:

ScrewFix 5minute drive (RM17 5YB), B&Q 10minute drive (RM20 3WJ), White's Sound and Light 12minute drive (RM16 5UE).

## Nearby Hotel:

Travellodge Thurrock Lakeside within a 10-minute drive. Tel: 08719 846518 (RM20 2AB)

## Medical:

All of our building wardens/security team are qualified first aiders. There is a first aid kit located in the FoH office, backstage, technical suite and a defibrillator located in the main reception (Ground floor).

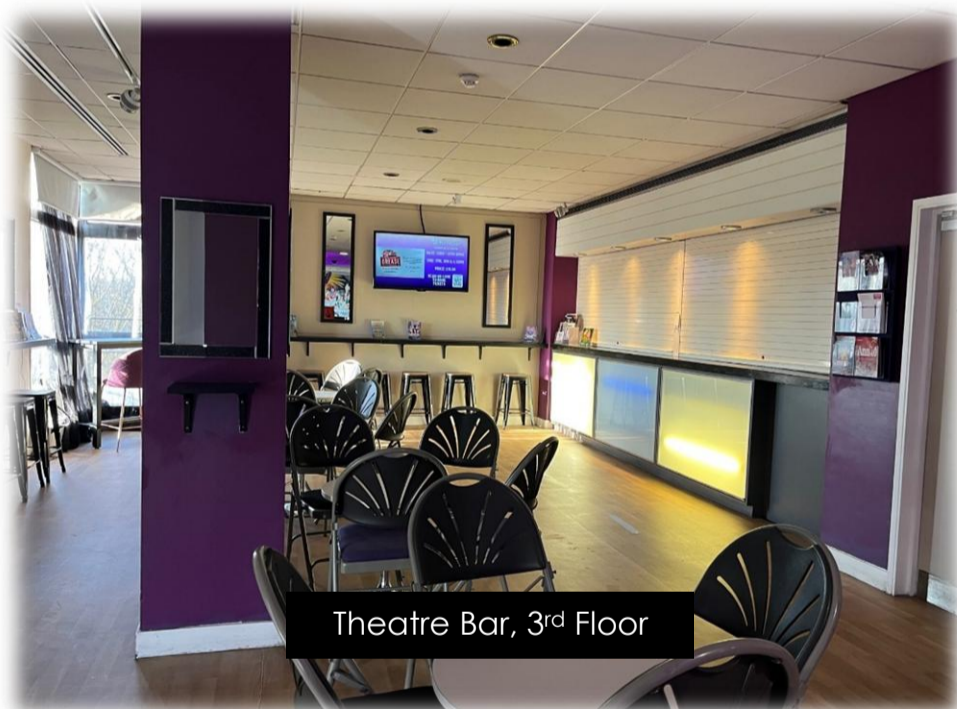
Basildon Hospital A&E, 18minute drive, SS16 5NL

Orsett Hospital (Minor Injuries), 15minute drive, RM16 3EU

## Venue Pictures



Theatre Foyer, 3<sup>rd</sup> Floor

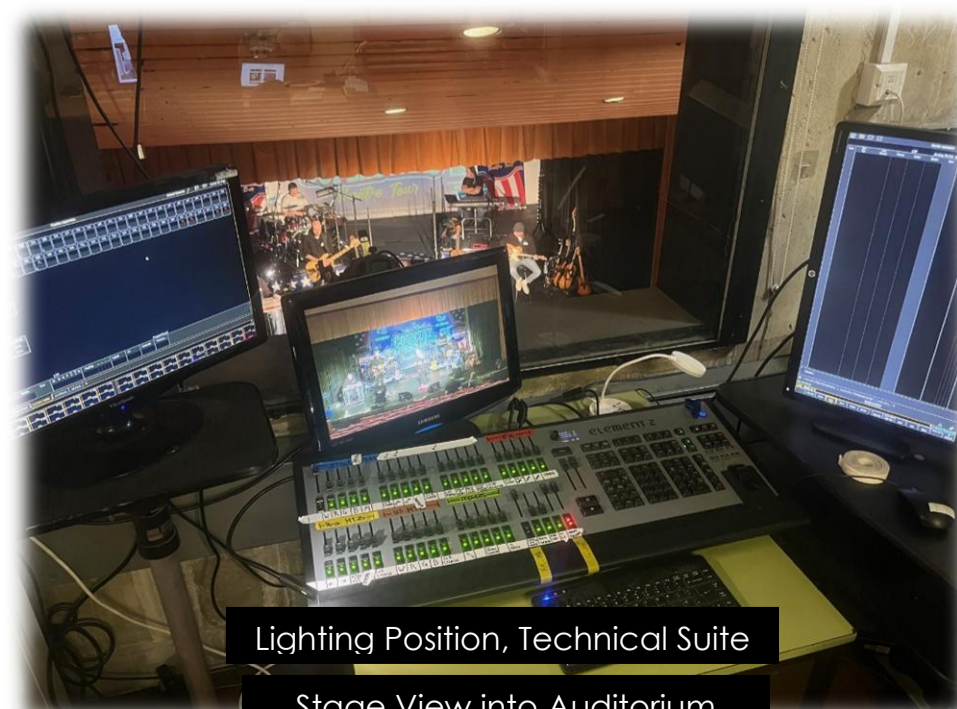


Theatre Bar, 3<sup>rd</sup> Floor



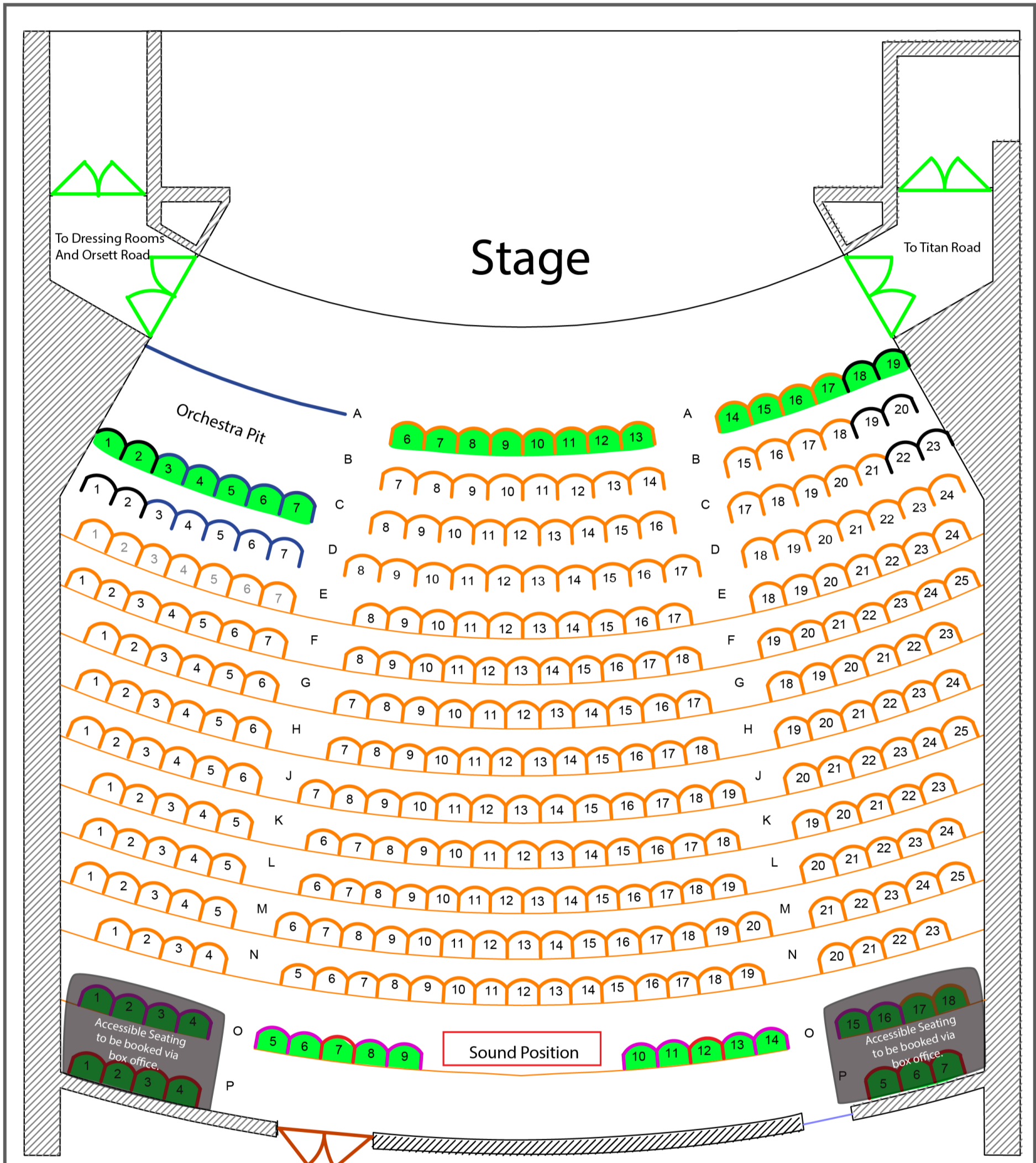
Main Entrance, G Floor









Mix Position, Auditorium Rear



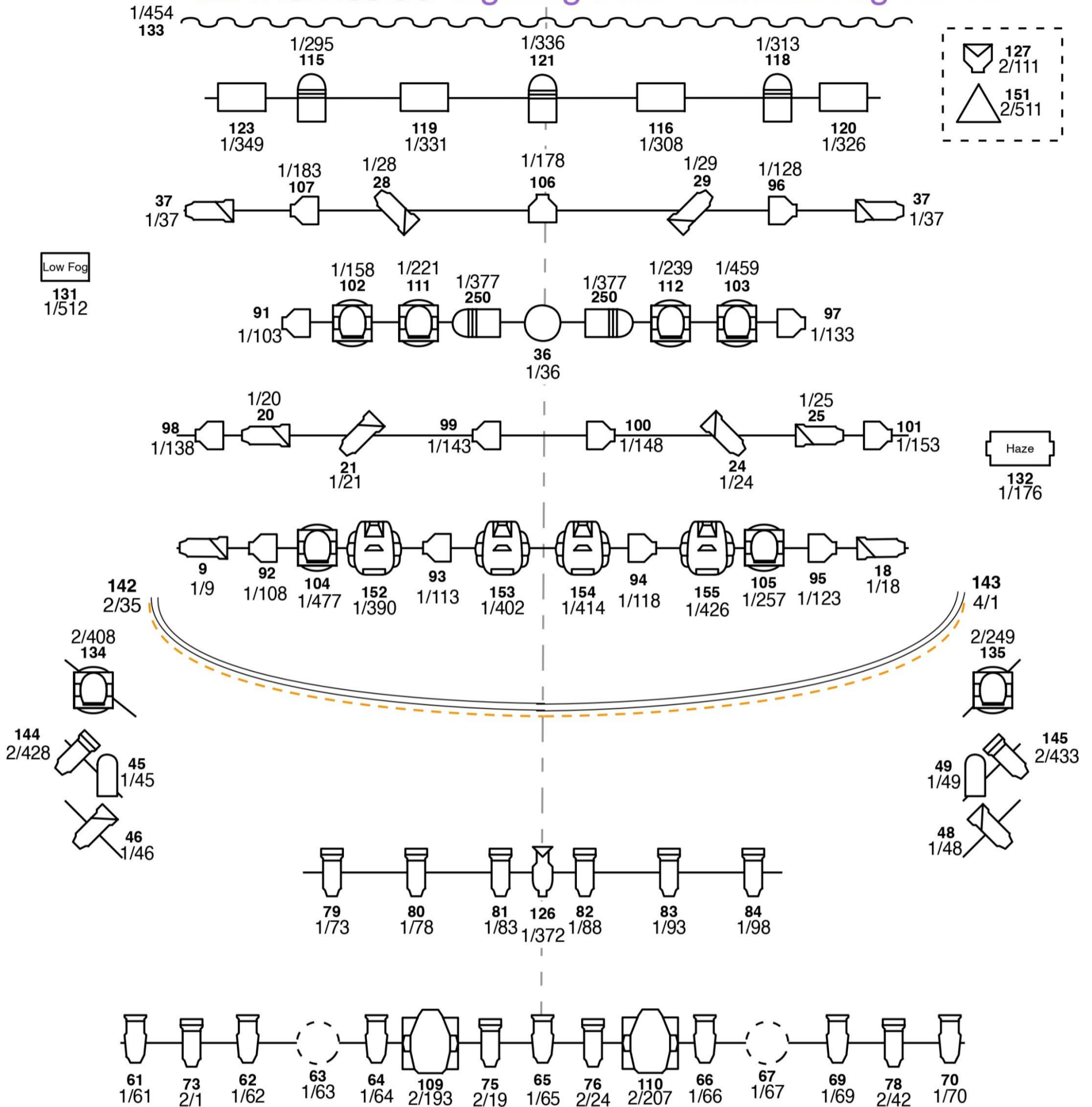
Lighting Position, Technical Suite

Stage View into Auditorium


**Key**

-  - Standard Seating
-  - Wheelchair / Removable Seating
-  - Carers Seating (O7 & O12 are removable)
-  - Orchestra Pit / Removable Seating
-  - Seating with extra leg room
-  - Restricted View
-  - Main Entrance
-  - Fire Exits

thameside Lighting Plot - Generic Rig v15.01.26

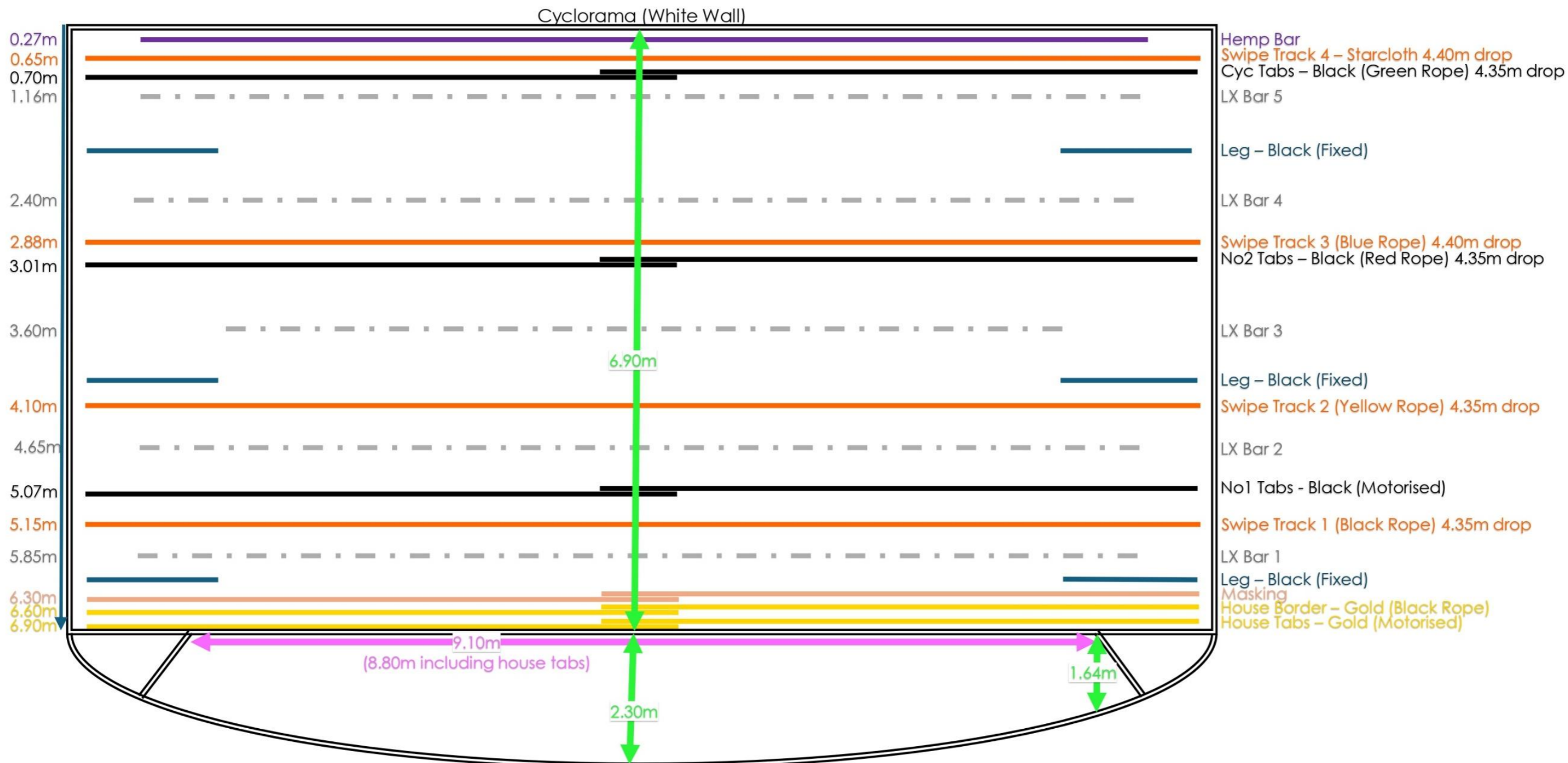


Please Note: 1/11, 1/12, 1/13, 1/15, 1/23, 1/40, 1/44, 1/47 must be patched as non dim and parked at full

	ETC Colorsource Cyc (5ch) 8.7Kg		ADJ Entour Faze (2ch) 5Kg		ADJ Entour Chill (1ch) 7.8Kg
	Sagitter HTZ Zoom Par (13ch) 4Kg		Chauvet Funfetti (1ch) 6.2Kg		Pinwheel (1ch) 3Kg
	ETC Colorsource Par (5ch) 4.8Kg		Uking ZQ02341 Beam Pro (12ch) 5Kg		LED Tape (GRB) 5m (3ch)
	Various Halogen Profiles (1ch) 7Kg		Betopper 7x40W RGBW 4in1 (18ch) 6Kg		LEDJ 8x4.5m Starcloth (5ch)
	ETC Source4 Zoom 15-30 (1ch) 10.3Kg		Chauvet Intimidator Spot 355 (14ch) 11.6Kg		Mirror Ball & Motor (1ch) 4Kg
	ETC Colorsource Spot (5ch) 10.3Kg		Thunderbolt FX Cold Spark (2ch) 9.5Kg		House Lights 1-6 1/1 - 1/6

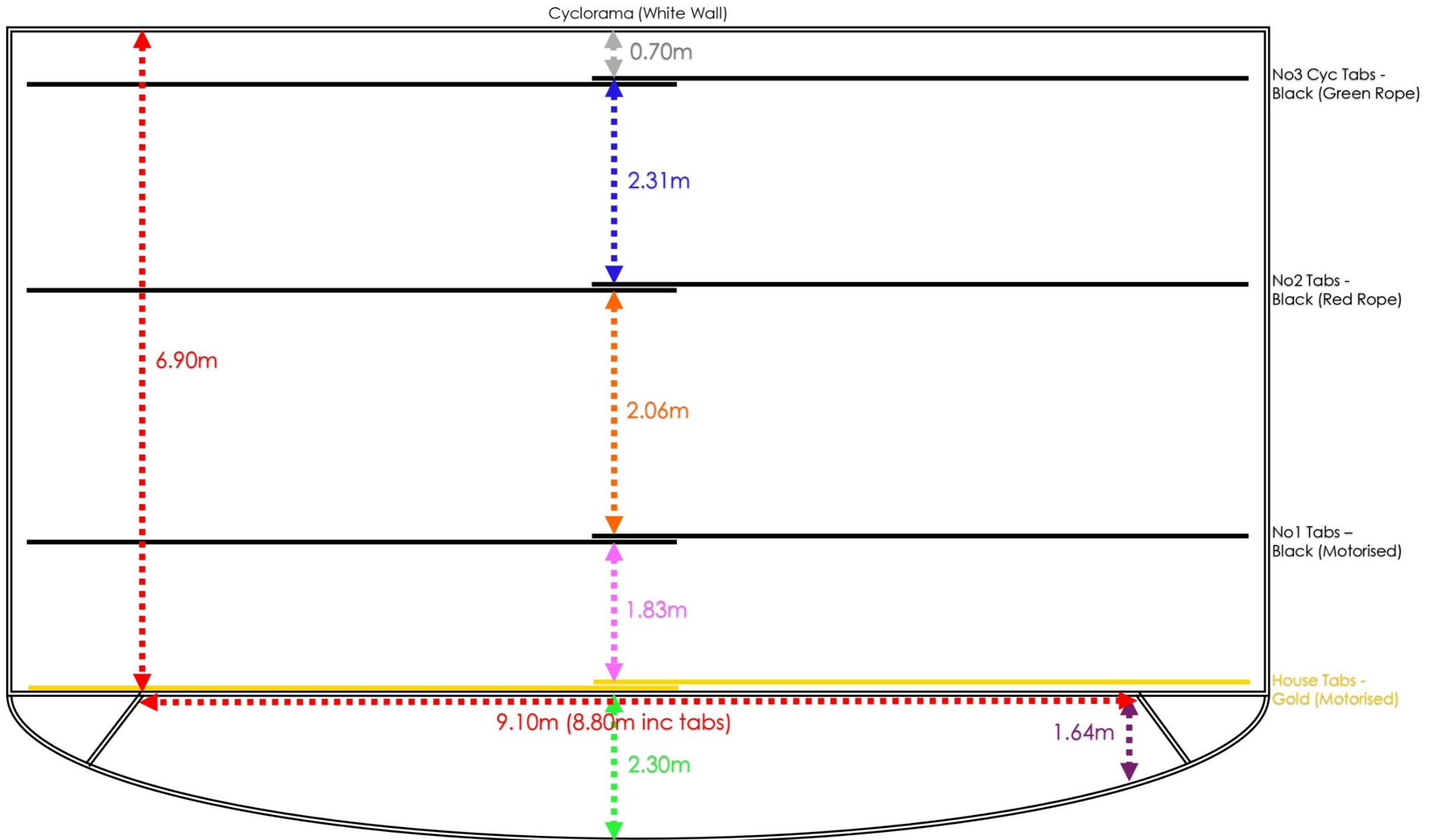


# Thameside Theatre – Tab & Track Plot v03.26



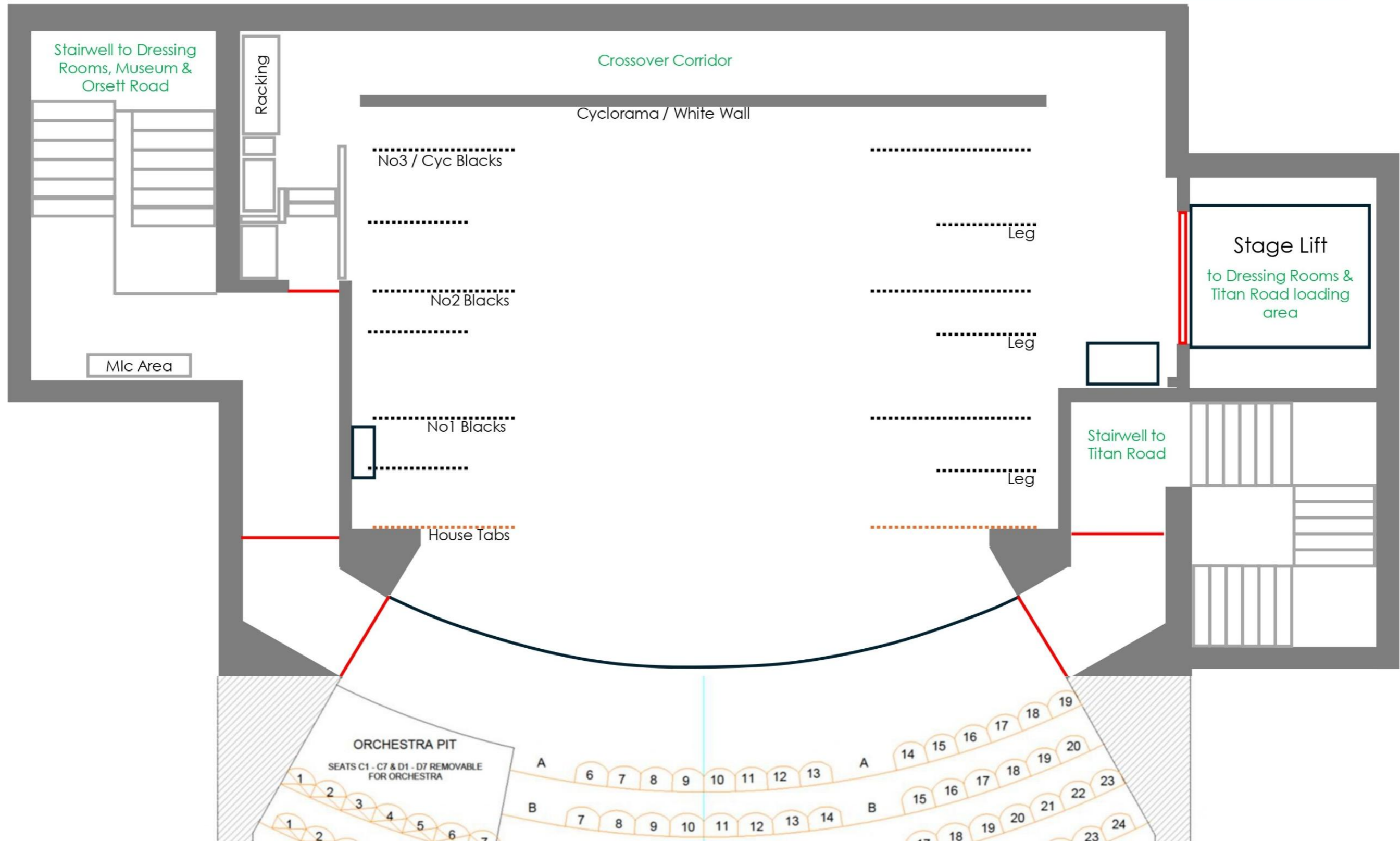
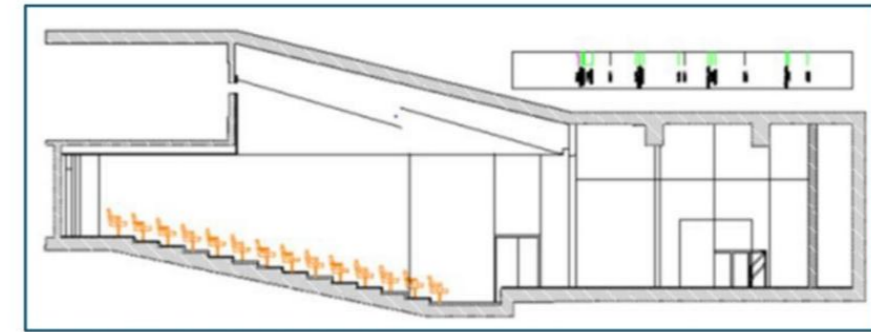


# Thameside Theatre – Stage Measurements v03.26

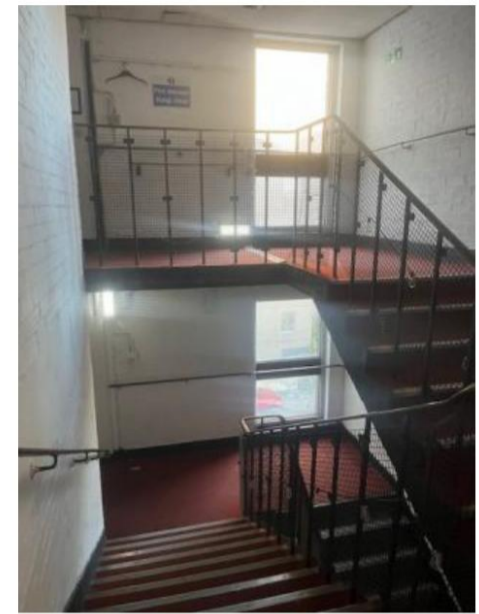
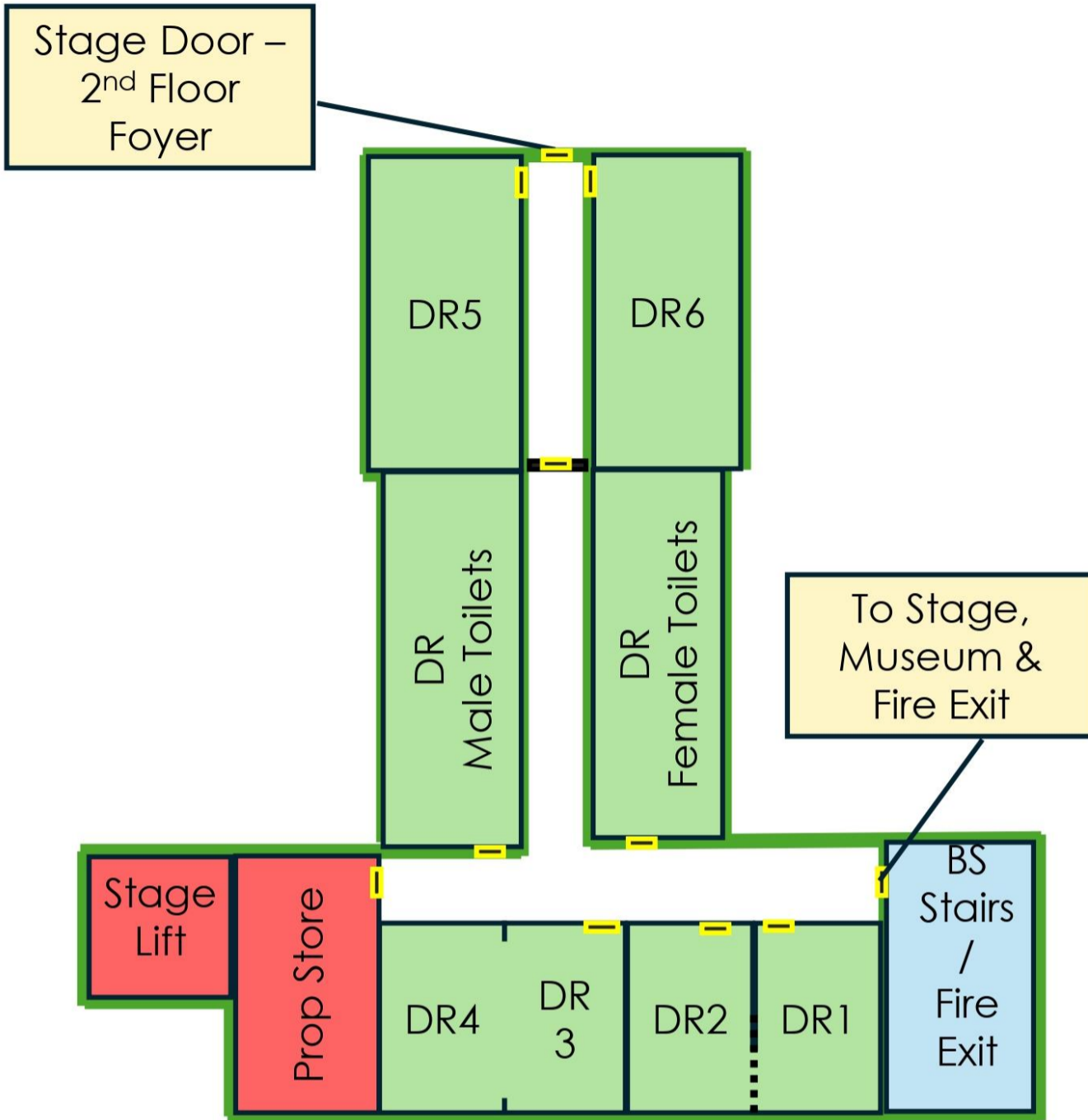




# Thameside Theatre – Full Stage v03.26



# Thameside Theatre - Dressing Room Plans (2<sup>nd</sup> Floor) v03.26



Backstage Stairwell



Dressing Room 1



Dressing Room 2



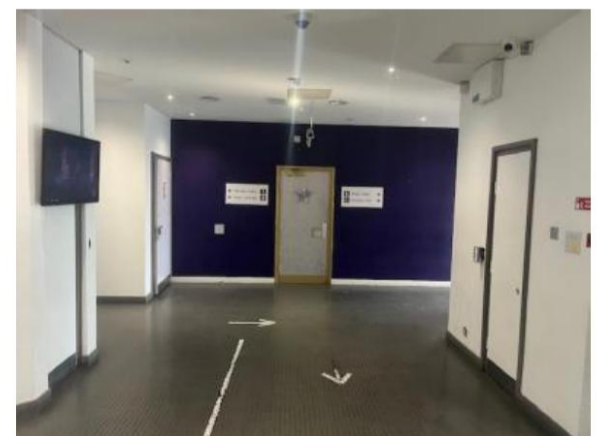
Dressing Room 3/4



Dressing Room 5



Dressing Room 6



Stage Door, 2<sup>nd</sup> Floor