

GRAYS RIVERSIDE TOWN BOARD 16.05.22



Previous Session

- What we discussed (Possible locations for activity hub, Location of the pier, Treatment of the beach)
- What we heard



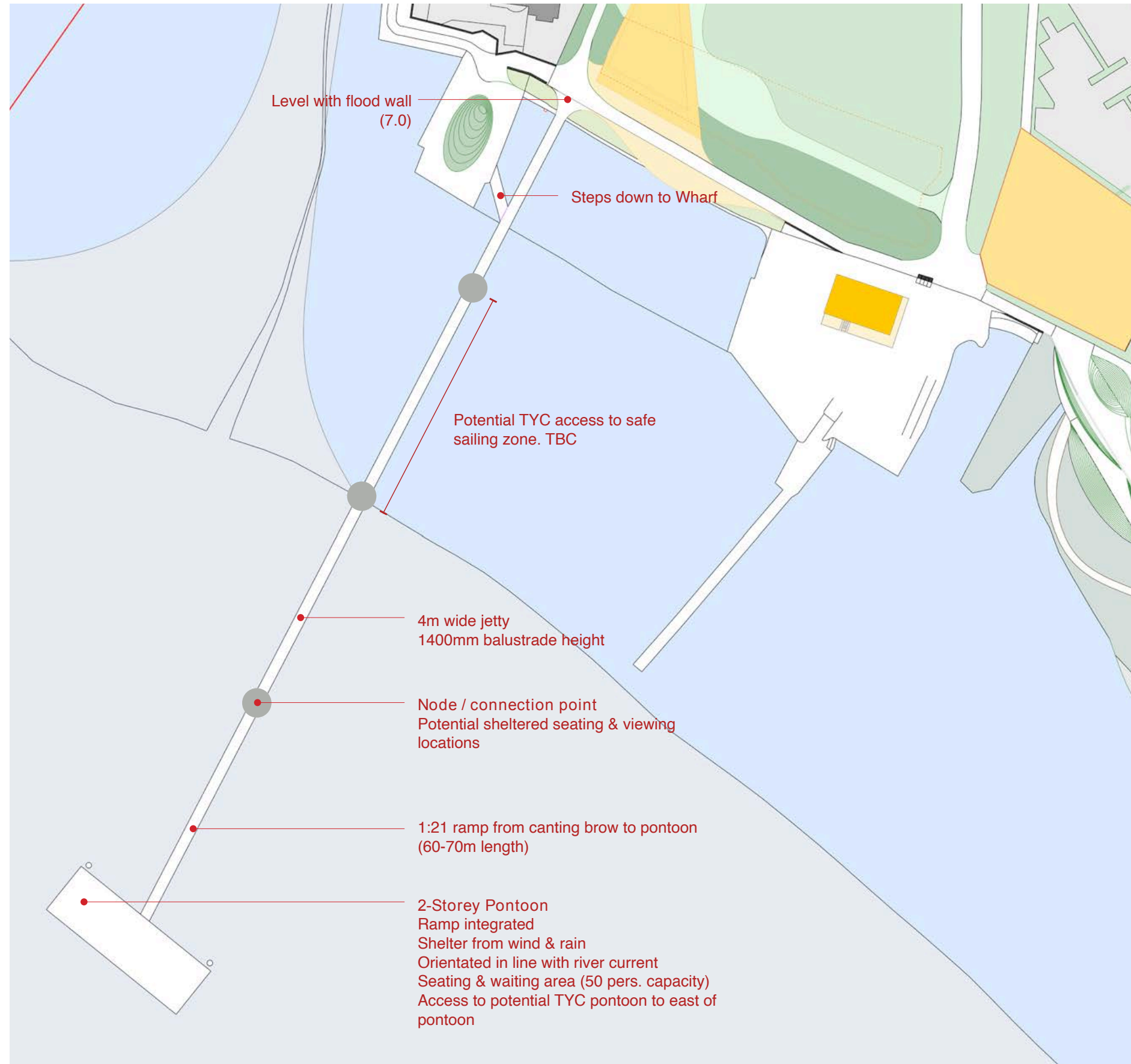
Overall Masterplan



Project 6

Grays Town Jetty

Grays Town Jetty



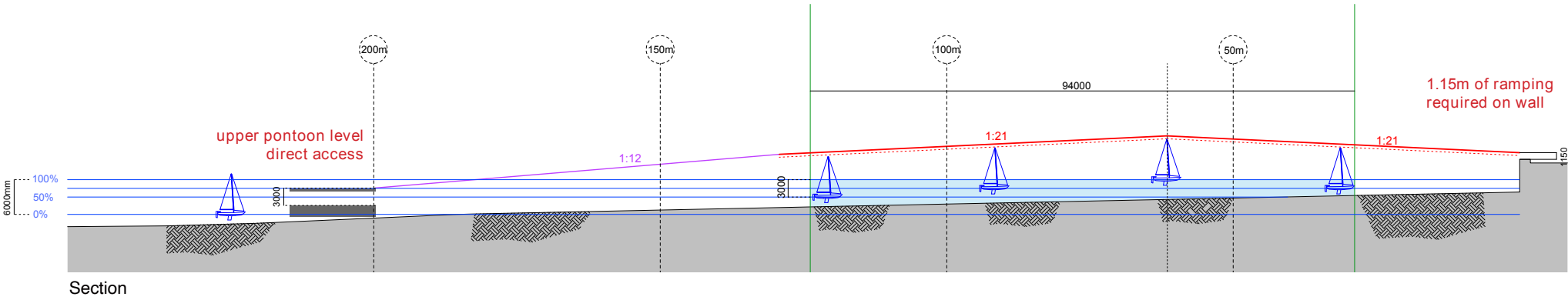
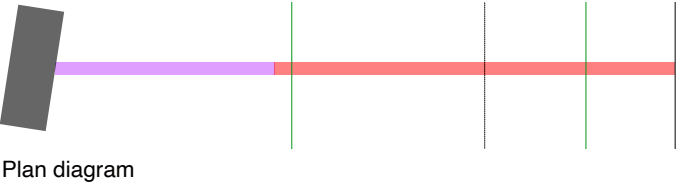
Grays Town Jetty Overview

We underwent a series of studies to determine the location of the jetty. The reasons for location the pier to the east of Grays Town Wharf are as follows:

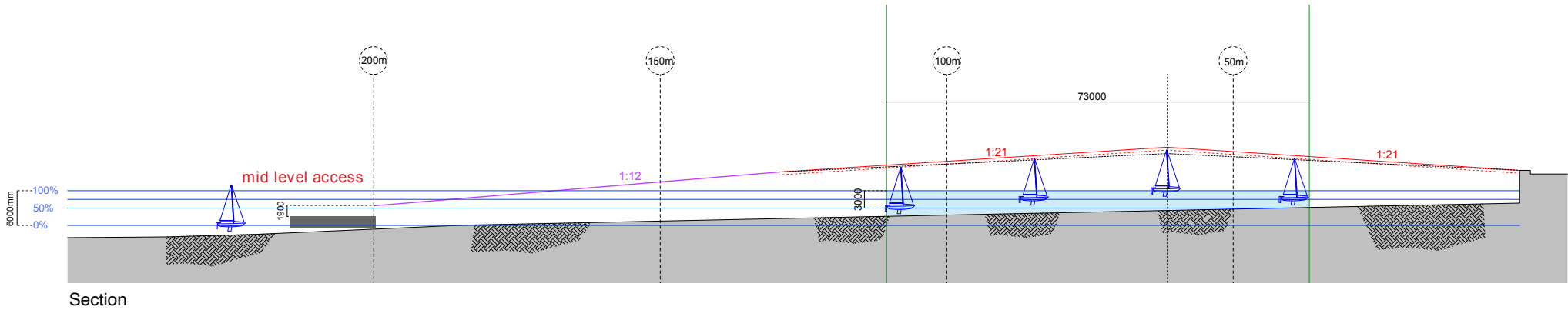
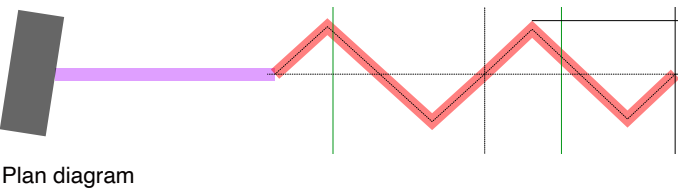
- + Least impact on Yacht club moorings
- + Pier hub located close to town walk for future use
- + Visually draw people down to water
- + Access via the existing wharf
- + Alternate access route via Kilverts Field if flood gate closed
- + Least obstructive to the riverside park

Grays Town Jetty

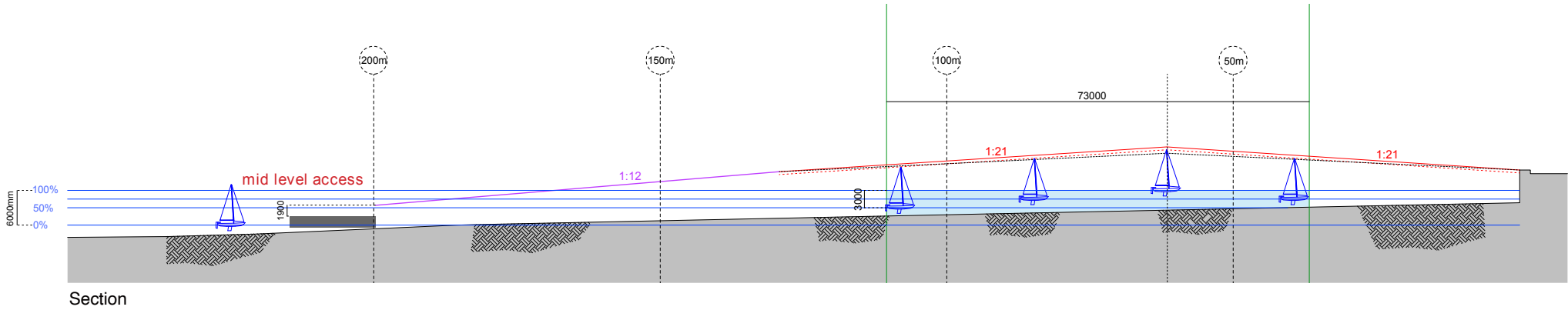
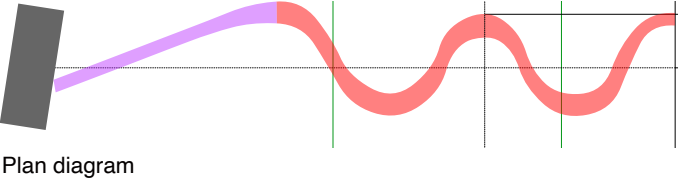
1. Straight
Boat gateway accessible 31% of the time
(50-82% tide height)



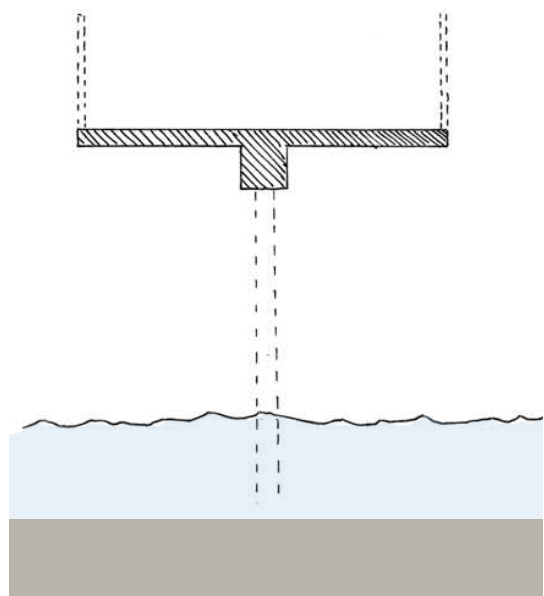
2. Zig Zag
36% longer than straight pier
Boat gateway accessible 50% of the time
(50-100% tide height)



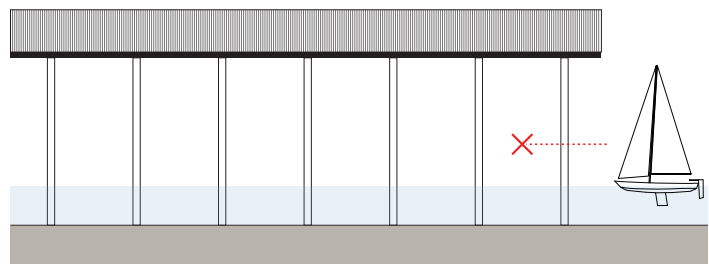
3. Wave
46% longer than straight pier
Boat gateway accessible 55% of the time
(50-100% tide height)



Grays Town Jetty

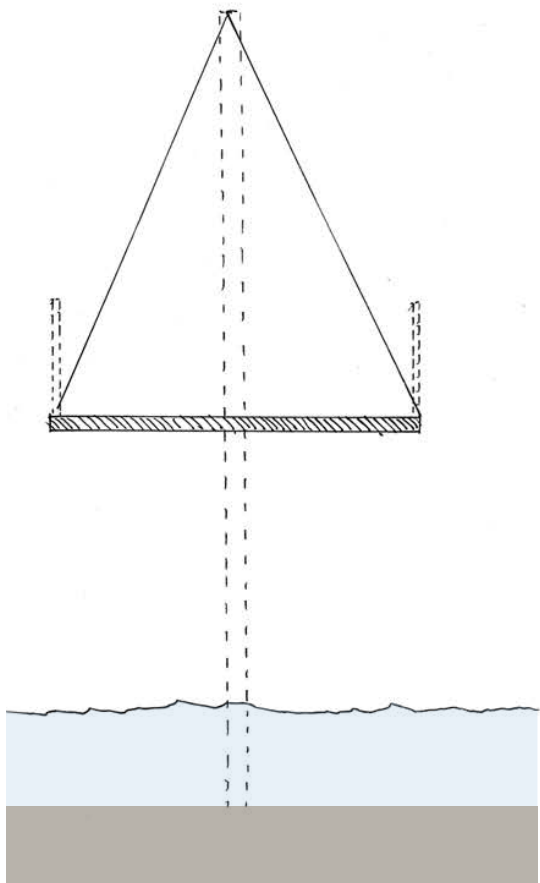


Cross section

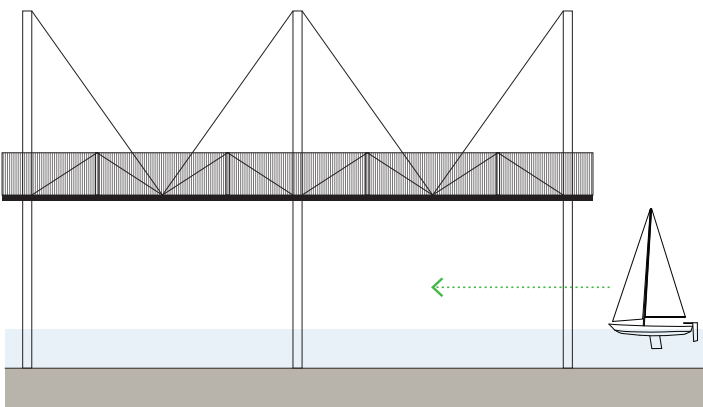


Elevation

1. T Beam
Short Spans (approx 15-20m)

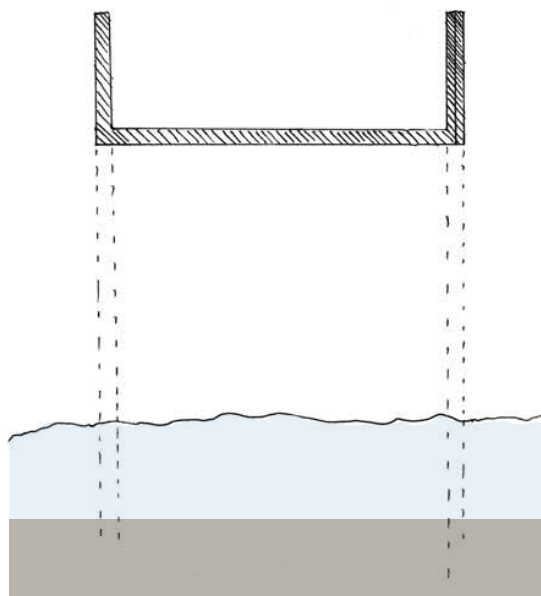


Cross section

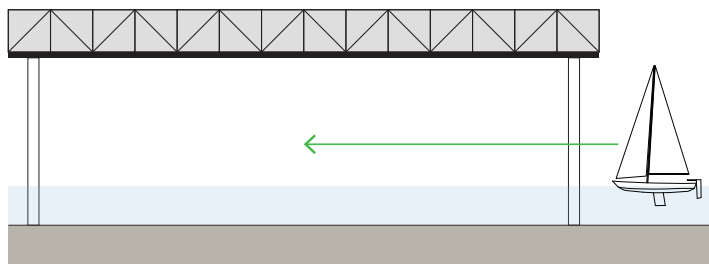


Elevation

2. Suspension
Intermediate spans (approx 20-30m)



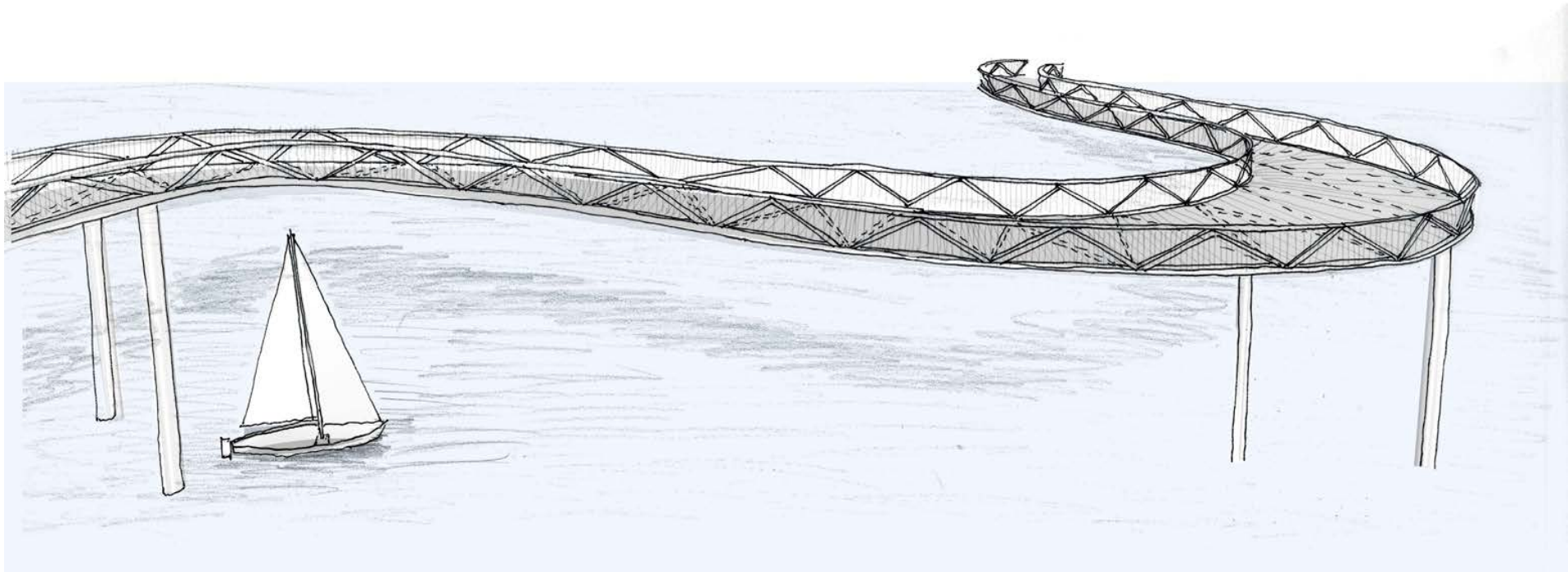
Cross section



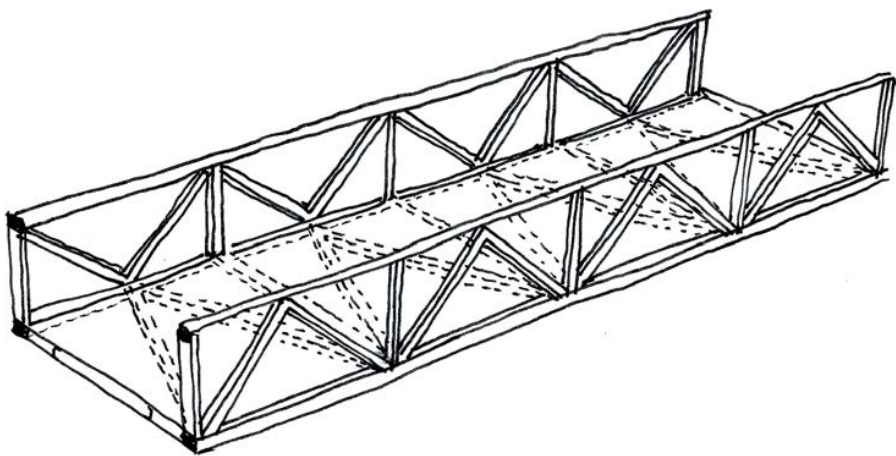
Elevation

3. Structural Balustrade
Long Spans (approx. 40m)

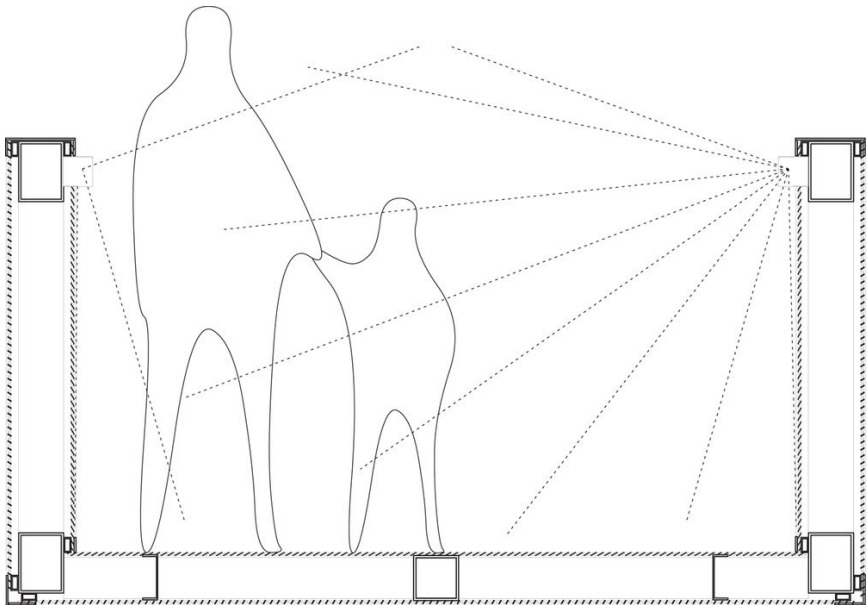
Grays Town Jetty



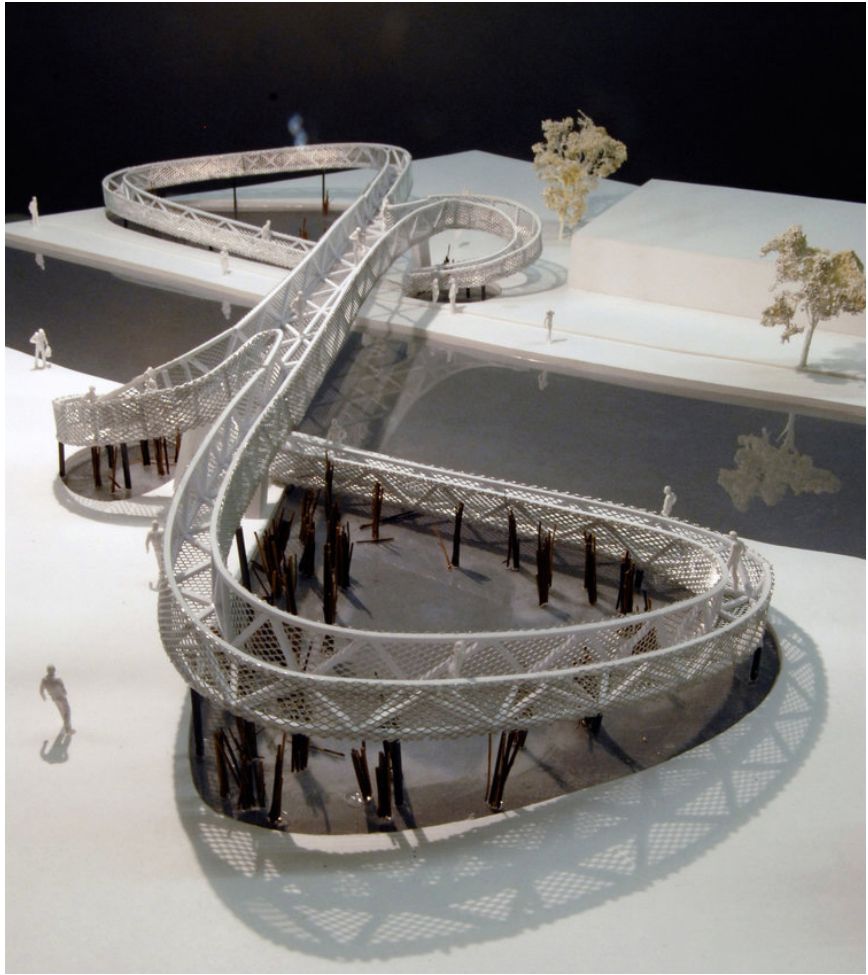
Sketch visualisation



Structural Sketch



Concept Cross Section



Loop Pool Bridge, Tonkin Liu 2007

Grays Town Jetty



Battersea Power Station Pier

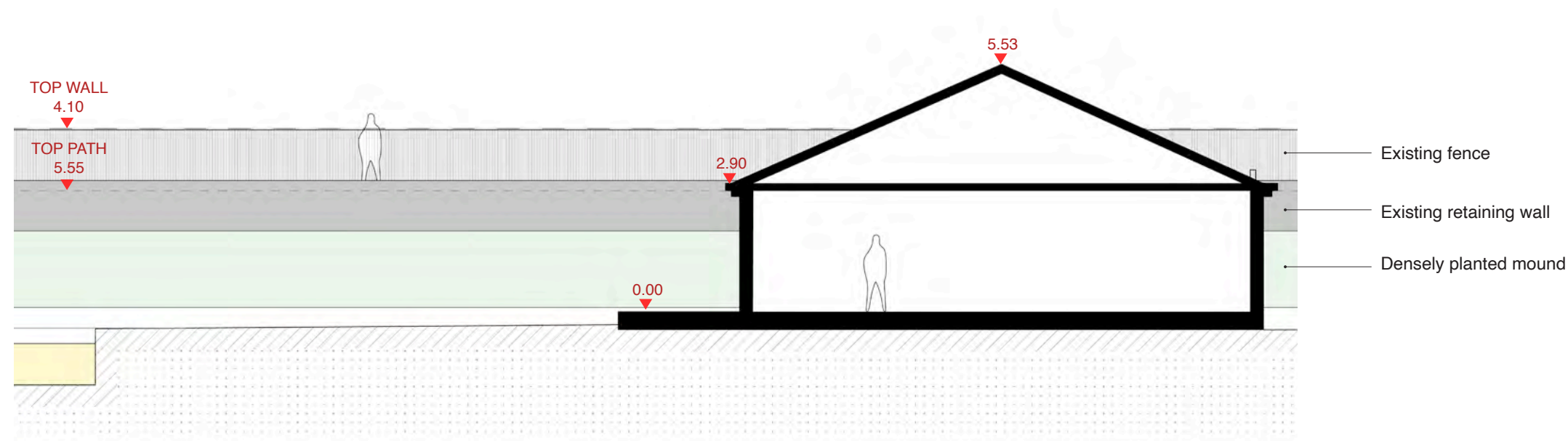


Wandsworth Riverside Quarter Pier Extension

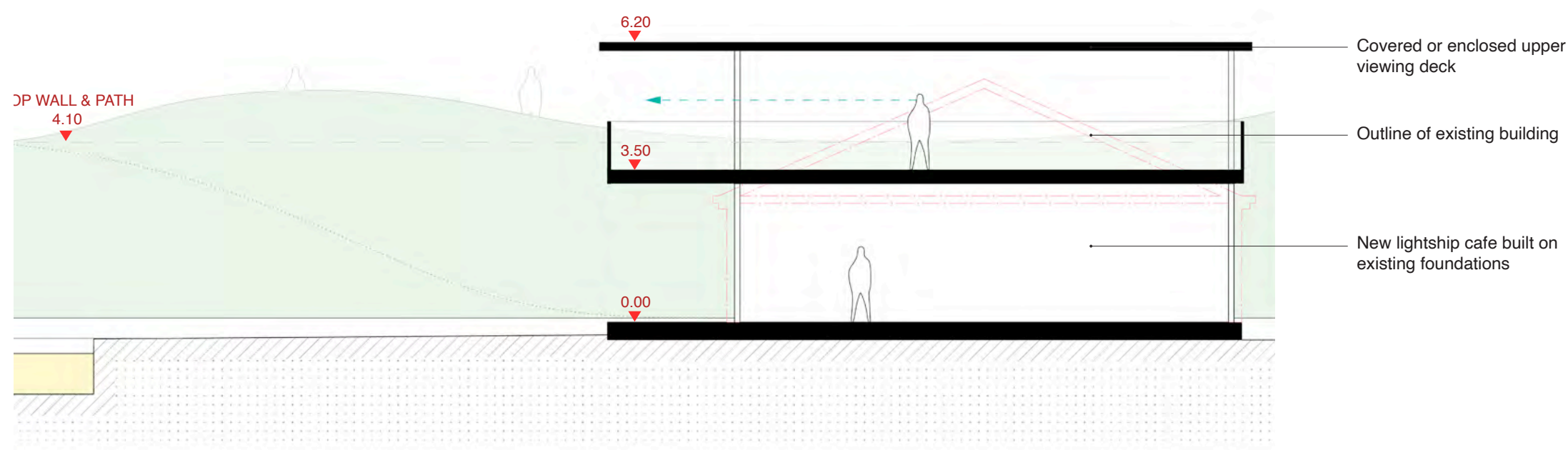
Project 4

Grays Beach Riverside Park & Kilverts Field - including enhanced Lightship Cafe

Grays Beach Riverside Park & Kilverts Field. Leisure Destination including enhanced Lightship Cafe

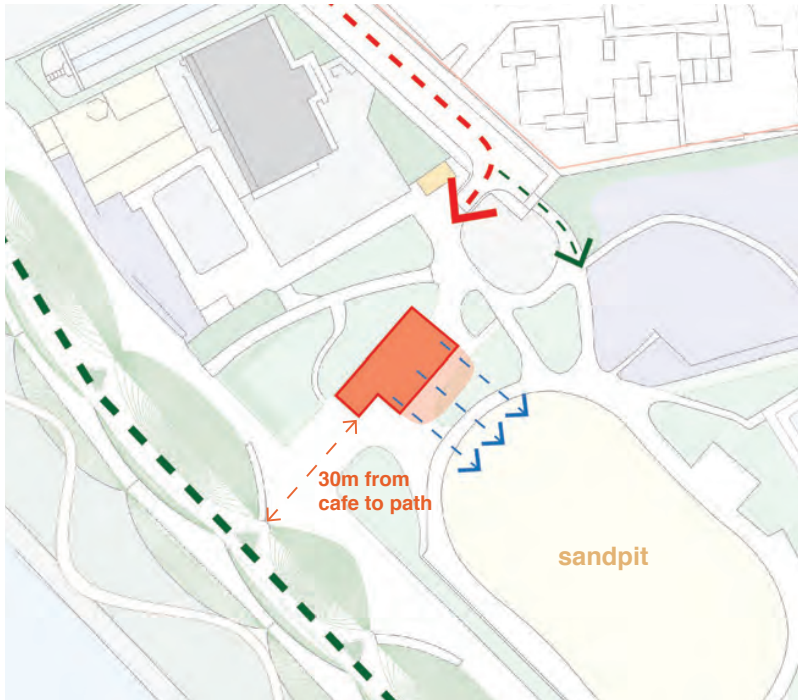


Existing Lightship Cafe - Short Section



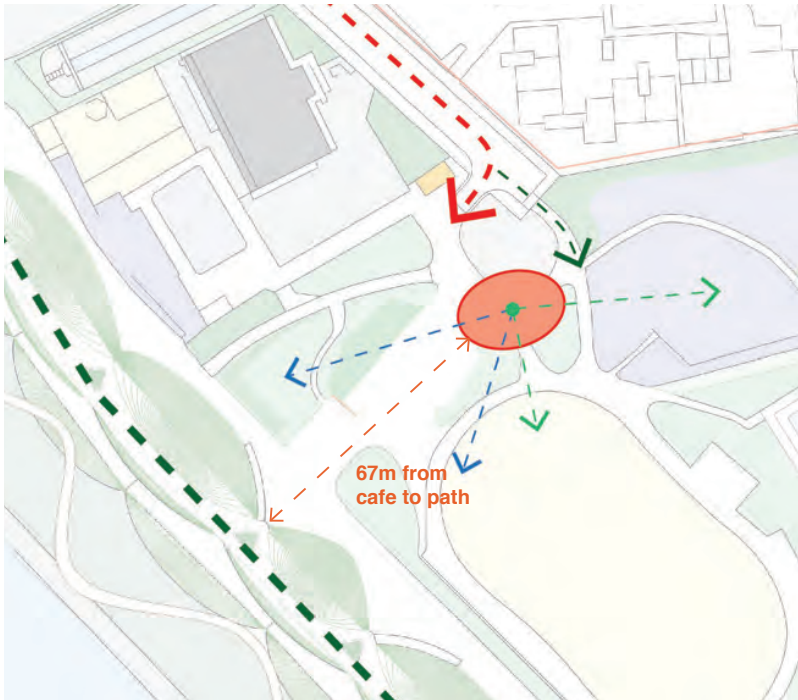
Proposed Lightship Cafe - Short Section

Grays Beach Riverside Park & Kilverts Field. Leisure Destination including enhanced Lightship Cafe



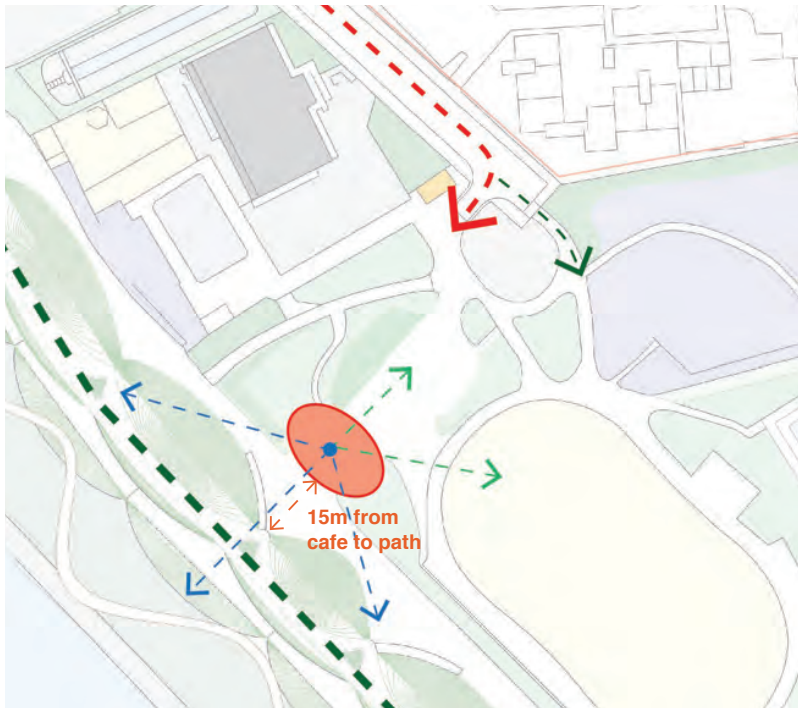
1. Existing Footprint

- + Use existing foundations & utilities / services
- + Views out to sandpit
- No visual connection with river
- Single aspect



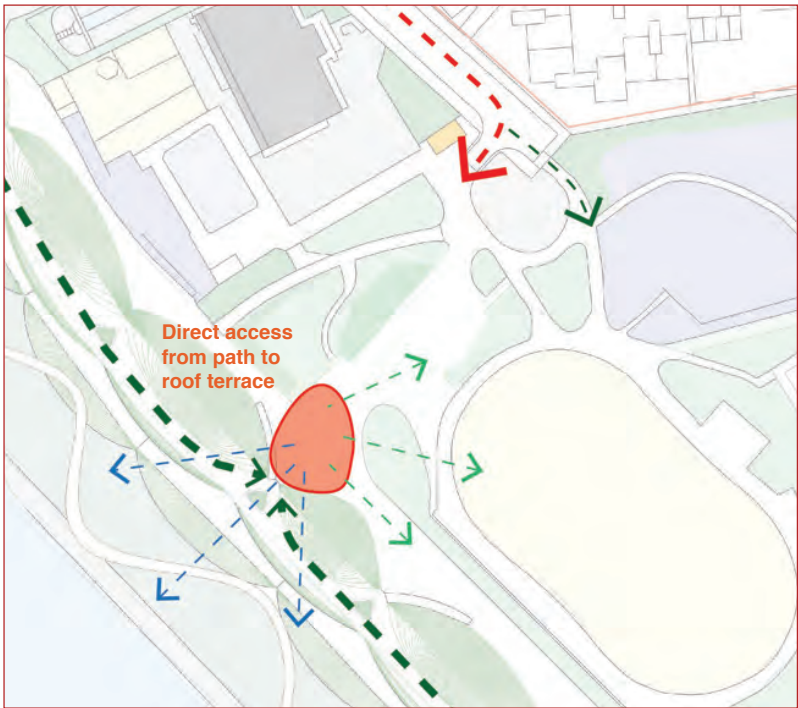
2. Park Entrance / Tots Corner

- + Views over sandpit & river
- + Central location for toilets & splash pad changing facilities
- + Proximity to activity area
- Distance from riverfront path



3. Riverfront Walk

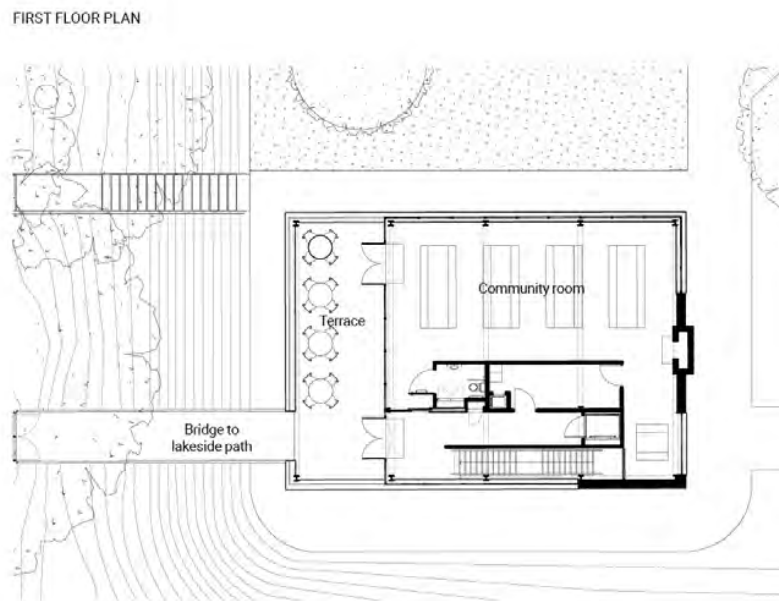
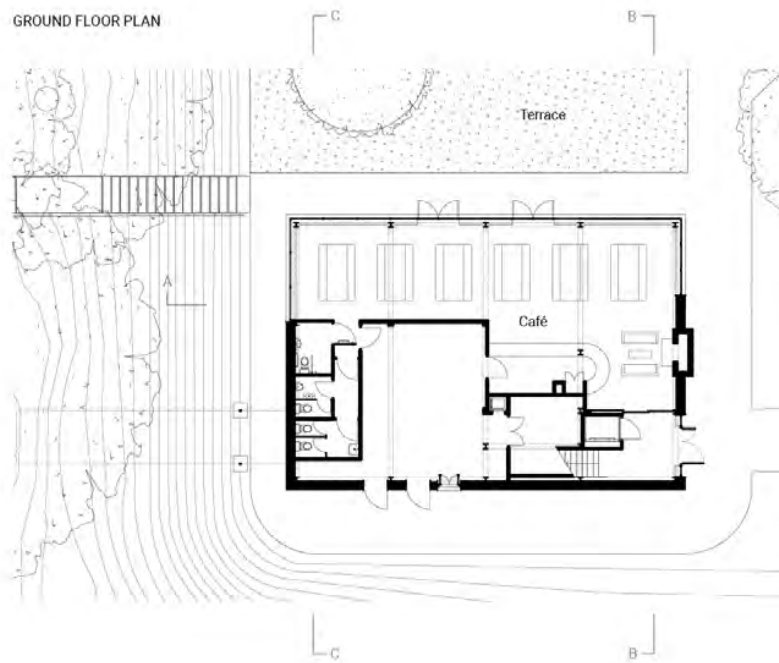
- + Close proximity to path
- Distance from park entrance & activity spaces
- Focuses on river more than park



4. Open to riverfront and park

- + Direct access from path to roof terrace
- + Proximity to riverfront
- + Form maximises views of park & river
- + Cafe opens out to park & river
- Distance from park entrance & activity spaces

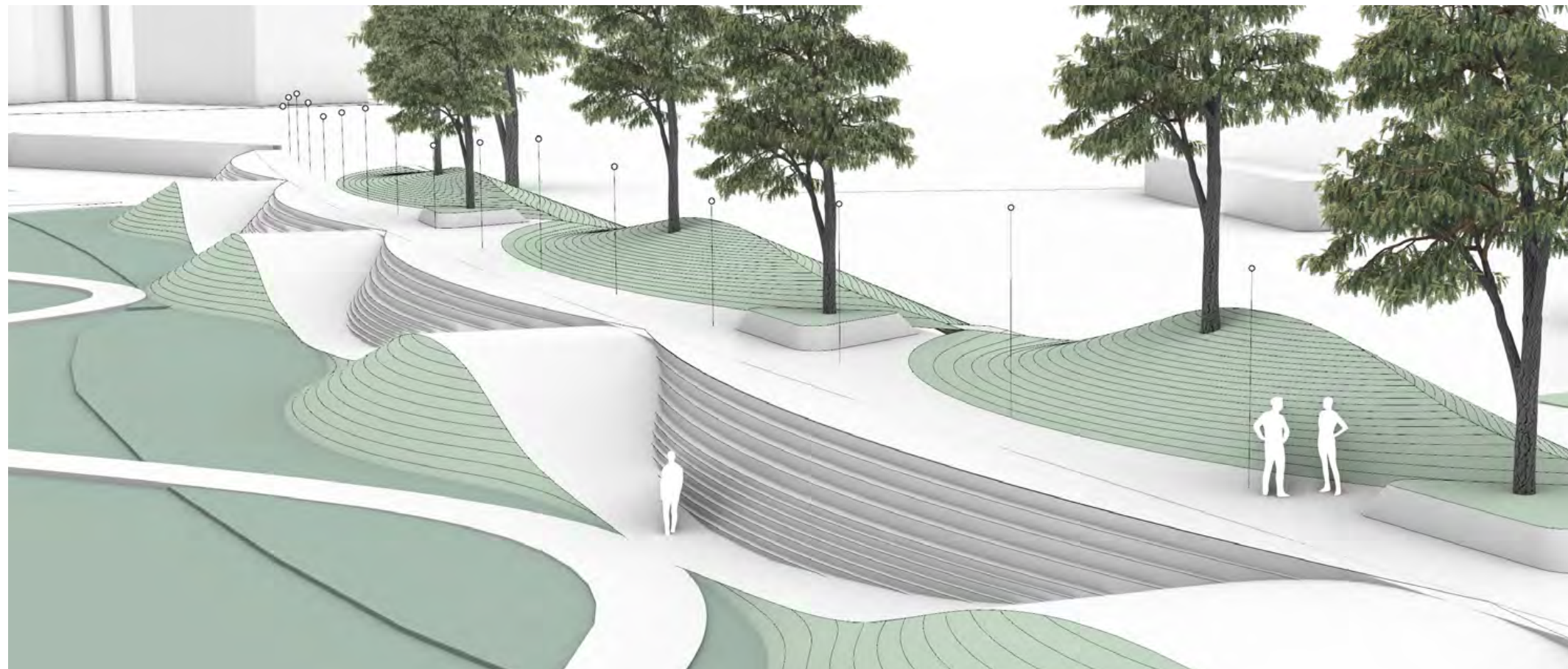
Grays Beach Riverside Park & Kilverts Field. Leisure Destination including enhanced Lightship Cafe



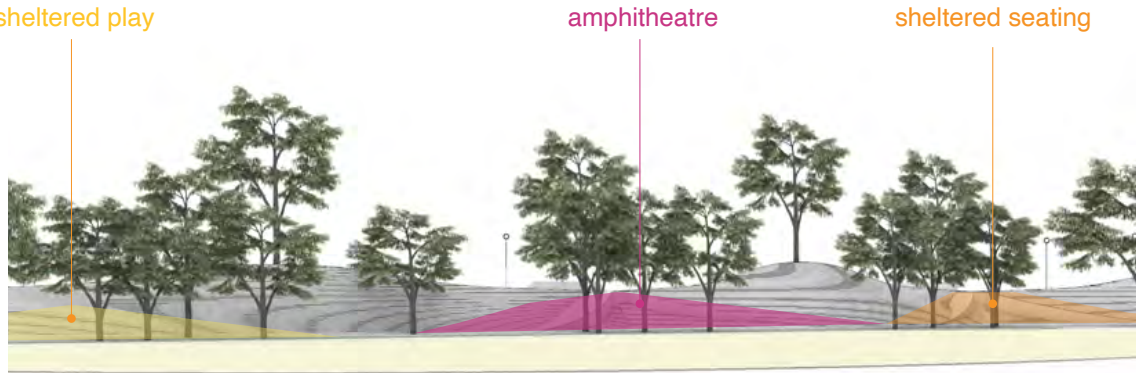
Project 3

Grays Riverfront

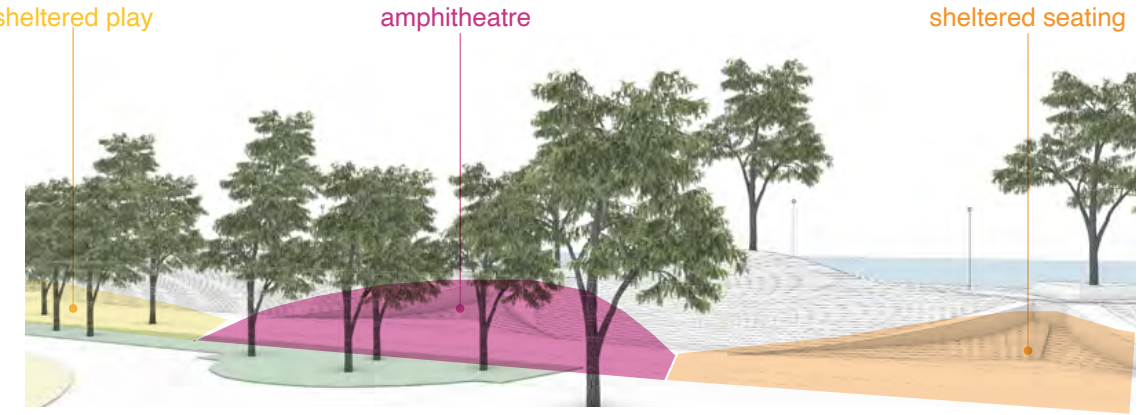
Grays Riverfront



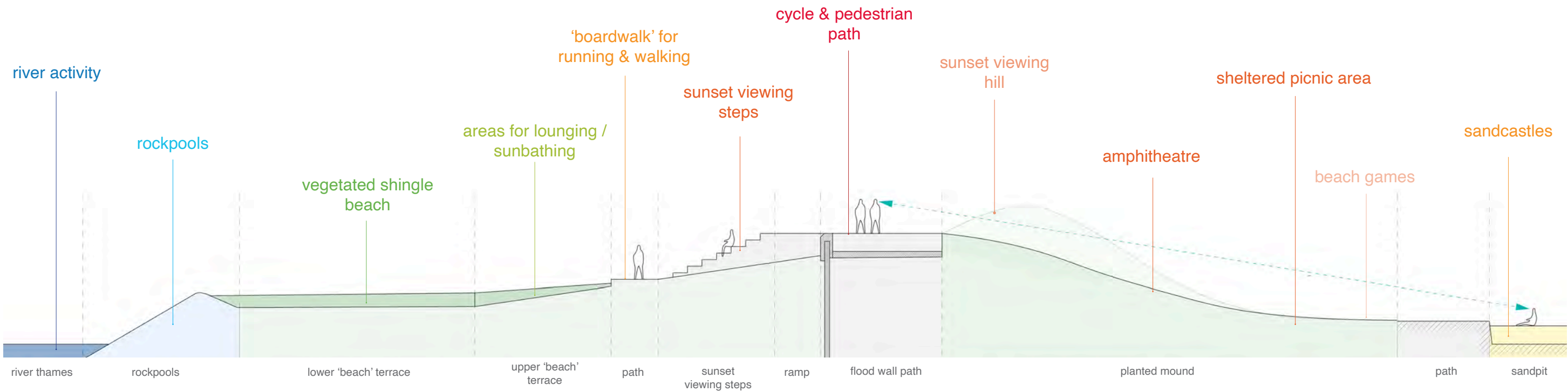
Grays Riverfront



View of landmass from Grays Beach Riverside Park



Grays Riverfront

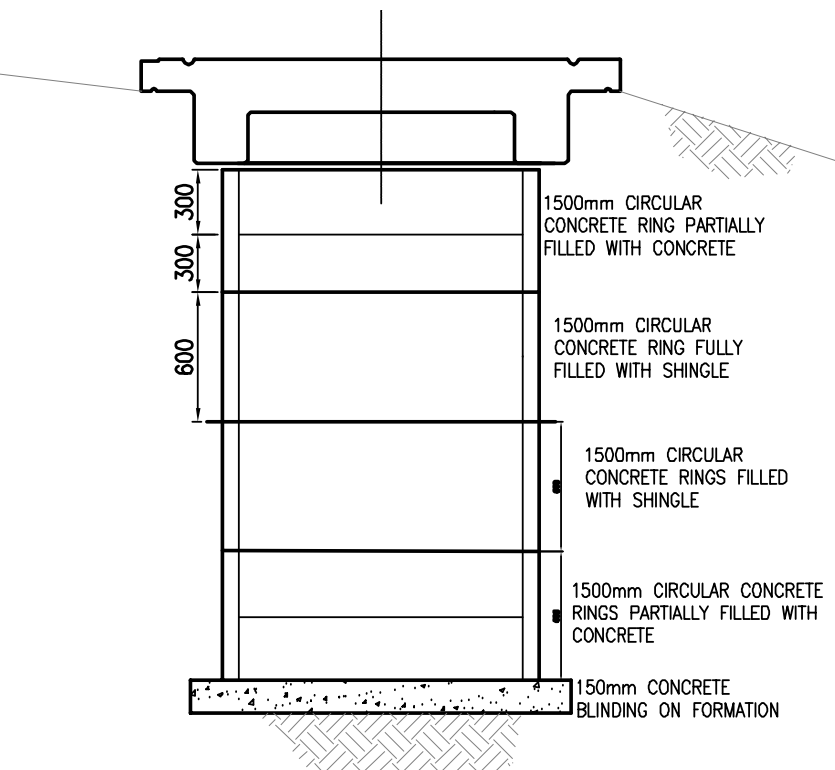


Increasingly nature focused towards the river bank

Grays Riverfront



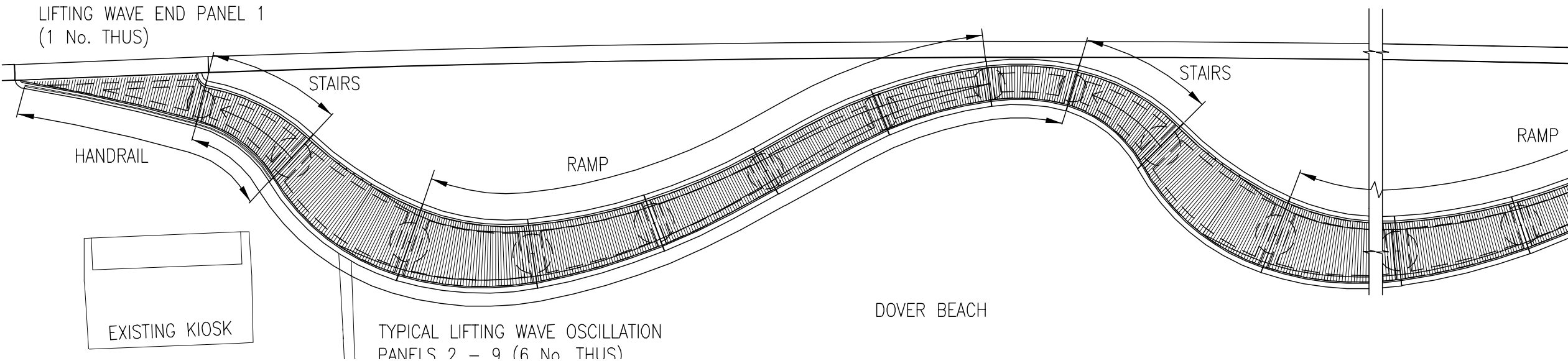
Grays Riverfront



Path Foundation Detail Section



Dover Esplanade, Tonkin Liu



Thank you

ARUrbanism



BECKETT RANKINE
Marine Consulting Engineers