

Thurrock Council
Childcare Sufficiency Assessment (CSA)
August 2022



Report produced by

Sue Lamkin,
Business Support and Sufficiency Officer,
School Effectiveness Team
Children's Services.

Copyright

Report published by Thurrock Council, September 2022.

Other formats and languages

For a large print, braille, disc, sign language or audio-tape version of this document, please contact us at the address below.

Thurrock Council
Civic Offices
New Road
Grays
RM17 6SL

Phone 01375 652 744

www.thurrock.gov.uk

You will need to supply your name, your postal address and state the format and title of the publication you require.

If you would like a summary of this document in your language, please phone the number or contact us at the address above.

Contents

Overall assessment and summary	5
Overall sufficiency in our area	5
Government-funded early education for 2 years olds	5
Universal (15 hour) funded early education and childcare for 3 and 4 year-olds	6
Early years childcare outside the funded entitlements	6
Childcare before and after school	6
Childcare during the holidays	6
Childcare for children with special educational needs and disabilities (SEND)	6
Childcare during atypical hours – outside 8am and 6pm on weekdays	6
Quality of childcare	6
Level of provision	6
Our plans for childcare	8
Recruitment and retention concerns for Thurrock	9
Changing perceptions of the Early Years career path	10
Changing the narrative	10
Training	10
Fair pay, recruitment and retention	10
Programme to support Early Years providers	10
Demand for early education and childcare	12
Population of early year's children – data taken from ONS 2020	12
Population of school-age children	12
Changes to population of children in our area	12
Number of children with special educational needs and disabilities	13
Supply of early education and childcare	14
Number of early year's providers and places	14
Early years vacancies	14
Early years atypical hours	15
Number of school age providers and places	15
Holiday Activity and Food (HAF) programme	16
Take-up of funded early education	18
3 year-old and 4 year-old funded entitlement applications	18
Prices of early school years childcare	18
Prices of school age	19
Childcare sufficiency ward data – summer term 2022	19
2 year-old entitlement	19
Quality of provision	19
Aveley and Uplands	20
Belhus	21
Chadwell St Mary	22
Chafford and North Stifford	23
Corringham and Fobbing	24

East Tilbury.....	25
Grays Riverside	25
Grays Thurrock.....	26
Little Thurrock Blackshots.....	27
Little Thurrock Rectory.....	28
Ockendon	29
Orsett.....	30
South Chafford.....	31
Stanford East and Corringham Town.....	32
Stanford-le-Hope West	33
Stifford Clays	34
The Homesteads	34
Tilbury Riverside and Thurrock Park.....	35
Tilbury St Chads	37
West Thurrock and South Stifford.....	37
Quality of childcare in our area	39
Ofsted inspection grades	39
Parents views of sufficiency in our local area.....	39
Parent survey.....	39
FIS enquiry data	39
Economic regeneration and new housing	40
Methodology.....	41

Overall assessment and summary

The council is required by law to report annually to the elected council members on how we are meeting our duty to secure sufficient childcare in our borough, as set out in the Childcare Act 2006. This report is available and accessible to parents. We have prepared this report in order to meet this duty.

Having sufficient childcare means that families are able to find childcare that meets their child's learning needs and enables parents to make a real choice about work and training. This applies to all children from birth to the age of 14, and to children with disabilities. Sufficiency is assessed for different groups, rather than for all children in the local authority.

In this report, we have assessed sufficiency using data about the need for childcare and the amount of childcare available, and feedback from local parents about how easy or difficult it has been for them to find suitable childcare.

We use information about childcare sufficiency to plan our work supporting the local childcare economy.

The Childcare Sufficiency Report also:

- sets out the principles and planning guidelines on early years both nationally and locally
- provides demographic and contextual picture of the early year's provision in Thurrock
- provides information on the demand of childcare in Thurrock including data in relation to children with special educational needs and or disability (SEND), school-age children and the take up funded early education places
- provides an indication of the supply, quality and affordability of childcare across the borough
- provides childcare sufficiency data, population of 2, 3 and 4 years-old and number of childcare providers by wards
- provides details of the take-up of 30 hours of free childcare
- provides details of future planning and developments and population increases/decreases
- details how we plan to support childcare sufficiency in the borough

Overall sufficiency in our area

To ensure overall childcare sufficiency we continue to work with providers to offer sustainable, yet affordable childcare. We work with providers to ensure our prices are similar to our geographical neighbours.

Recruitment was identified as an issue in the CSA 2021. This is still a concern both locally and nationally. Please see our plan to support recruitment under point 3 – Our plans for childcare.

Government-funded early education for 2 years olds

Our take of 2 year-old funding is in line with national average. West Thurrock and South Stifford have the largest number of parents eligible for 2 year-old funding.

There is only one nursery in the Purfleet-on-Thames area, as result there is a lack of parental choice. This means that parents and children need to travel to other parts of the borough, which isn't an option for all parents. Some families are accessing childminders for 2 year-old provision but there are few in the Purfleet-on-Thames area.

Universal (15 hour) funded early education and childcare for 3 and 4 year-olds

We have not received any parental feedback that parents cannot gain a place for their child's universal entitlement. There are parents who do not choose to access early years childcare.

Early years childcare outside the funded entitlements

Our data is suggesting that there is a need to increase the 30 hours funded places.

Childcare before and after school

There has been an increase in the number of schools offering before and after school provision, along with activity-based clubs.

Childcare during the holidays

We have not received parental feedback that parents cannot access holiday provision. Many childminders offer wrap around during the holidays. Thurrock accesses the government-funded Holiday Activity Funding (HAF) which offers free holiday activities to children in receipt of free school meals. Details of our offer are commented on pages 16 and 17 of this report.

Childcare for children with special educational needs and disabilities (SEND)

Parents find it difficult to access suitable childcare for SEND children. There is a need to create more places. As above HAF is available to children with SEND – see details on pages 16 and 17 of this report.

Childcare during atypical hours – outside 8am and 6pm on weekdays

There is demand to create more childcare places during atypical hours to support parents who work shift patterns and weekends.

Quality of childcare

We continue to work with our providers to ensure good quality provision and expect all our providers to achieve a good or outstanding Ofsted. We have a team of officers who work closely with providers at risk of not meeting this standard to improve practice to ensure good outcomes for our youngest children.

Under the guidance of the Early Years officers, all private, voluntary and independent (PVI) providers in Thurrock undertake a safeguarding and welfare audit at least once a year. PVIs are supported by Learning and Development Officers to ensure good quality early years education.

Level of provision

Thurrock Council officers work with providers to ensure good quality early education and childcare is available to those parents who wish to access early education and childcare places.

We closely monitor our settings and offer educational, welfare and financial advice.

The COVID-19 pandemic had a significant impact on the number of children accessing the 2 year-old entitlement. However, from autumn 2021 we started to see an upturn in take-up, and by the

end of summer term 2022 we achieved 76.33% of eligible 2 year-old children attending early education and childcare, which was the highest figure for this period since 2015.

The percentage is calculated against the number of families shown as eligible for the 2 year-old entitlement (2YE) based on information provided by the Department of Work and Pensions (DWP). It relates to families who meet the financial eligibility criteria for 2YE or whose children are in receipt of Disability Living Allowance. It does not include children outside of these criteria e.g., eligible due to their immigration status.

To calculate the percentage for the summer term we use the number of families on the DWP list for March 2022. Although the percentage take-up has increased the number of families identified as eligible for the funding has decreased.

For various reasons including financial sustainability several PVI settings have closed since August 2021. We are working with several potential new providers to support the opening of new settings to ensure the number of registered places increases in the next academic year 2022/23.

The number of schools offering nursery places has increased so this has reduced the impact of the reduction in the number of PVI settings.

We have had a decrease of 28 childminders, which has reduced the number of registered places on offer. We offer childminder induction training termly to ensure potential new childminders have received training to ensure they can run a successful business, thus maintaining or increasing childminder registered places.

As of summer 2022, 3,478 children have accessed the additional 15 hours of funded entitlement for working parents of 3 and 4 year-olds. This is a decrease of 712 children on the previous summer. This may reflect parental working patterns due to the COVID-19 pandemic where more parents are working from home and the closure of three large nurseries in Thurrock.

As of summer 2022, the number of children accessing 30 hours entitlement is 1,418. This is an increase of 157 on the previous year. Potentially this could be due to settings offering a more flexible 30-hour offer.

Parents can access wraparound care, which includes holiday, before and after school care. 69% of our childminders and full-day care settings offer wraparound care. This supports parents to find or stay in full time work supporting children in a home-to-home environment.

A third of day care providers offer breakfast and after school provision serving local schools along with over 68% of our childminders. This ensures parental choice.

In addition, 72% of our schools offer breakfast club for children attending their school, promoting school attendance and a healthy start to the day and supporting working parents.

Thurrock has one independent provider who offers solely wraparound care serving three local schools in the Grays area of Thurrock, plus one school offering holiday scheme.

A large number of childminders also offer holiday provision and full day care for 5 year-olds and older.

We have a number of providers who offer atypical hours of childcare in Thurrock.

Although entitlement places exist for all children, those parents of children with SEND can find that some providers are limited by their financial sustainability to admit all SEND children requiring

places beyond the 15 hours if they require additional support. Additional support is available to settings via Early Years Inclusion Fund and Disability Access Fund (DAF) and settings can claim high needs funding to support children's special educational needs.

The lack of places causes a barrier to working parents of SEND children who require full time wrap around care and holiday care for their children. Should a child with SEND require full-time early education and childcare, the additional hours of support outside of the 15-hours or 30-hours entitlement has to be met by the childcare provider. This can put the provider's sustainability into question.

Our Early Years Area SENCO is working closely with settings to ensure there are suitable childcare places available to all parents regardless of need. We are proactively marketing the take up Early Years Inclusion Fund and DAF funding, ensuring the grants are being used by settings to support early year's children with SEND. Our officers run regular training and forums to further improve the quality of SEND provision.

The Sunshine Centre based in Tilbury is for children aged up to 18 years-old with a whole range of both behavioural and physical disability. The centre offers holiday and respite care.

There are gaps in childcare in 60% of our wards including the Tilbury and Chadwell St Mary area and Grays Riverside, the west, central and some wards in the east.

Our plans for childcare

We plan to:

- continue encouraging providers, including schools, to participate in 30 hours' entitlement offer to enable more working parents to access their full entitlement
- sustain the take-up of the 2 year-old offer
- support providers to offer or access wraparound care for working parents
- provide training, mentoring and inclusion support for childcare providers to raise standards
- continue to provide business and financial advice to childcare providers
- support settings with recruitment and retention of good quality staff
- provide dedicated officers to work closely with new providers to offer support and advice – supporting with market research, business planning, identifying suitable premises, planning applications, staff recruitments and staffing ratios
- support further early years education and childcare development across the borough where regeneration and new housing is taking place
- support new settings ensuring welfare requirements and learning and development are delivered at a good standard from opening
- undertake safeguarding and welfare red-amber-green (RAG) audits of settings to monitor the quality of provision to ensure all settings are aiming for a good or better Ofsted judgement
- consider early education future needs before decisions are taken in relation to capital assets across the local authority
- increase the take-up of Early Years Inclusion Funding by streamlining our application process and to continue to engage with settings via SENCO forums, early years training and officer's support
- review the outcomes of the parental survey to ensure good quality childcare is available to all parents including parents of SEND children.
- to continue to work with Essex County Council to ensure flexible childcare is available for emergency services colleagues across the two boroughs
- Increase the percentage of children eligible to take up 15-hours funding

- targeted approach to work with new and existing providers to increase the number of places in wards with a deficit

Recruitment and retention concerns for Thurrock

With growing concerns around the recruitment and retention of EY staff in Thurrock, we have been working with other local authorities locally and nationally to develop a strategy that recognises the problems the sector faces, and to identify some possible solutions and actions we can take to try to improve the recruitment and retention of the Early Years workforce in Thurrock.

Purnima Tanuku OBE, chief executive of National Day Nurseries Association (NDNA) said: "We agree that the pandemic has pushed the early education sector into a deeper crisis. Our own research throughout the pandemic has shown how closures increased, especially in areas of deprivation.

"We have also seen a workforce crisis that existed before the pandemic, made a lot worse. Evidence overwhelmingly shows how important early years are for a child's development, learning and educational outcomes. Therefore, any recovery has to start with getting it right in early education and care."

Recent reporting across 2021 and 2022 from professional bodies including the NDNA, Early Years Alliance, the Sutton Trust and the DfE has evidenced that:

- 77% reported serious issues with employing Level 3 staff and 24% said they struggled to even recruit unqualified staff, made more significant by low levels of retention
- employers point to a shortage of qualified staff as the main barrier to recruitment
- employers are reporting that it's harder to recruit staff at every level of qualification
- turnover of staff is 24%, compared to the UK average of 15-18%
- an average nursery has 1.6 vacancies leaving 7.6% of roles vacant across the sector, equivalent of 19,200 vacancies based on the DfE's latest estimate of 252,800 total staff
- in terms of applications per vacancy, providers reported receiving more applications for each vacancy before the start of the pandemic – before COVID-19, providers had an average of 4 applications for current vacancies, compared with 2 applications for current vacancies
- the three most common reasons for staff leaving the sector were for better pay (47%), better and more suitable working hours (43%) and a better work-life balance or less stressful job (43%)
- only 52% of the early year's workforce is now qualified at Level 3 or above with a further 17% qualified at Level 2 – in 2015/16 the NDNA survey showed 83% of the workforce were trained to Level 3 so this is a significant reduction which could affect quality of provision
- 26% of the workforce is made up of unqualified assistants, trainees or apprentices which is an increase of 16% on last year – employers are taking on more apprentices to alleviate funding pressures
- government underfunding is changing how nurseries operate resulting in 14% employing fewer graduates/teachers, 16% employing fewer Level 3 staff and 18% taking on more apprentices
- men working with children make up less than 1% of the workforce among smaller providers – this rose within larger nursery groups
- 37% of practitioners said they were unsure how long they would remain in the sector and 24% said they would probably leave within one to five years

- COVID-19 has exacerbated many of the pre-existing challenges for nursery practitioners, and data collected reveal a workforce overworked, neglected in policy terms and increasingly likely to leave the profession
- morale is extremely low and there has been a net loss of workers in the sector during the pandemic, leading to an intensified recruitment and retention crisis

Without a clear and cohesive strategy of investment in the early years workforce, the sector will continue to miss out on the many opportunities to 'Level Up' early years education for babies, children and families.

Now is the time to support the sector, and those who work within it, in order to build upon the current high levels of quality, increase the availability of provision and future-proof this vital sector.

Recommendations by professional bodies include the following.

Changing perceptions of the Early Years career path

An awareness campaign should focus on the critical importance of early childhood education on a child's development and life chances and portray the crucial role early years professionals play in supporting this. It should emphasise that this is a skilled role, equivalent to teaching in other phases of education.

Changing the narrative

There must be a shift away from the 'childcare' terminology so frequently used to 'early childhood education', in order to position the sector as a phase within the education journey rather than only a means of enabling parents to work.

Training

There should be an urgent exploration and extension of accessible and flexibly offered CPD, with online and face to face options, coupled with more high-quality workplace placements and action research projects, with mentoring support across the sector.

Fair pay, recruitment and retention

Early Years staff must be recognised and rewarded with a level of pay that reflects their essential role, and which allows them to focus their time and energy into just one job, rather than two or more to make ends meet, as so many who work in the early years have reported having to do.

Programme to support Early Years providers

Thurrock has developed a working programme to support Early Years providers with the recruitment and retention of staff. Our action plan below sets out some of the strategies we are working on.

Problem	Solution	Action
Early entry of students into the childcare sector.	Increase the promotion of Childcare based GCSEs across secondary schools. Work with DfE to influence	Work with Inspire team and form partnerships with secondary schools to deliver EY career options and information

Problem	Solution	Action
	<p>more research and action on this.</p> <p>Promote Early Years as work experience opportunities.</p>	<p>through open days, presentations, and so on.</p> <p>Lobby DfE to support sector through meetings.</p> <p>Attend HT meetings or provide information for HT briefings.</p>
Recruiting qualified staff at level 2 and 3.	Find ways to access students completing childcare qualifications at FE providers.	Develop partnerships with SEC, TACC, USP colleges. Team and providers to attend recruitment fairs, presentations, events to promote vacancies and recruitment opportunities.
Encouraging qualified staff back into the sector.	Finding ways to work with the employment sector to reach and attract staff who may wish to return.	Working with DWP and FE colleges to run recruitment events and to advise and offer CPD training to refresh knowledge and confidence to return to the sector.
Encouraging take up of Childcare introductory courses.	<p>Work with FE providers and DWP to promote the sector and attract people into qualifications.</p> <p>Target over 50s market.</p>	Work with DWP and SEC on the sector-based work programme iLearn childcare. Promote this through forums and newsletters to providers. Encourage providers to attend the recruitment events.
Support providers with advertising vacancies and attracting people into the sector.	Use council resources to promote vacancies and attract people into the sector through advertising and website.	Linking with Comms team for a social media campaign and setting up a vacancy page on Ask Thurrock and linking to main council website.
Increase people entering apprenticeships and raise the profile.	Promote Childcare apprenticeships at level 2, 3, 4, 5.	Working with TACC, SEC, USP and other apprenticeship providers to promote training and qualifications in Early Years.
Increasing access to CPD for practitioners.	Work with local providers to offer CPD courses free or at a reduced cost and making them accessible for professional and personal development opportunities.	Links with DWP, SEC and TACC who can offer CPD courses to providers and practitioners.
Encouraging parents to volunteer in settings as an introduction to childcare.	Set-up a 'promoting parent as volunteers' campaign.	Set up a working party of providers and FE partners, DWP and the LA comms team to put a "promoting parents as volunteers" campaign together for social media and advertising in settings. Refer interested parents to the iLearn childcare programme.

Demand for early education and childcare

Population of early year's children – data taken from ONS 2020.

In total, there are 13,104 children under the age of five living in our local authority. These children may require early year's education and childcare. This is a small decrease of 1.34% from 2021.

Numbers by age

Age	Number of children
Age 0	2,453
Age 1	2,529
Age 2	2,643
Age 3	2,700
Age 4*	2,779

* Some 4 year-olds will have started reception.

Population of school-age children

In total there are 18,492 children aged 5-11, and 7,364 children aged 12-14 living in our local authority. These children may require childcare before and after school, and/or during the school holidays.

Numbers by age

Age	Number of children
Age 5	2,790
Age 6	2,616
Age 7	2,686
Age 8	2,740
Age 9	2,698
Age 10	2,470
Age 11	2,492
Age 12	2,625
Age 13	2,421
Age 14	2,318

Changes to population of children in our area

Our population has increased from 2019 by 0.4%. The population of early year's children has decreased by 1.34%. The birth rate has mainly stayed the same with a slight decrease of 1.44% since 2019.

Number of children with special educational needs and disabilities

Children with special education needs and disabilities (SEND) are entitled to support with childcare up to the age of 18 (or 14 for children who do not have a special need or disability). The funding is there to help providers deliver extra support to children who are displaying emerging additional needs. The extra funding could be used by providers to pay for things such as additional equipment or staff training to support the child.

The numbers of children with an education, health, and care plan (EHCP) in our local authority is below.

Age	Number of children summer 2022	Number of children summer 2021
Birth to school age	70	76
Primary school (reception to year six)	857	775
Secondary school (year seven to thirteen)	902	838

There has been an increase of 7.14% of EHCP agreed from July 2021 to July 2022.

Children aged 3 and 4 who have low level or emerging special education needs or disability are entitled to early years inclusion funding.

Period	Number of children accessing Early Years Inclusion funding
From summer term 2021 to summer term 2022,	47
From summer term 2020 to summer term 2021	83

This is a decrease from the previous year of 56.63%. Uptake is reduced due to the recruitment crisis settings are experiencing. Staff are struggling to engage with additional work because of having to prioritise staff ratios to meet Ofsted requirements ensuring their businesses are operational.

Early years providers can access the Disability Access Fund. The fund is to support settings make reasonable adjustments to their settings if they have identified special education needs or disabilities children within their setting. Figures below correct as of 31 July 2022.

Number of settings accessing DAF funding summer term 2022	Number of children being supported.
20	33

High needs funding is available for SEND children from early years up to 25 years. The funding supports provision for their educational needs.

Number of early years children accessing high needs funding 2022	Number of early years children accessing high needs funding 2021
26	6

This is an increase of 33.3%

Children's needs change over time and are identified at different ages. Among the youngest children, SEND may only be identified when they start in early education and childcare or school, and it can take some time from concerns being identified to an EHCP being issued. It is therefore possible that the number of children with SEND aged 0-4 is an underestimate.

Some children have SEND but do not have the need for an EHCP. This is why the number of EHCPs for early year's children is low.

For an EHCP to be agreed, two specific criteria must be met:

- *whether the child or young person has or may have special educational needs*
- *whether they may need special educational provision to be made through an EHCP*

Supply of early education and childcare

Number of early year's providers and places

In total, there are 202 early years childcare providers in our local authority, offering a maximum of 3938 early years' childcare places:

Type of provision	Number of providers 2022	Number of registered places 2022	Number of providers 2021	Number of registered places 2021
Childminders*	125	835	153	981
Nursery classes in schools	30	986	28	841
Private, voluntary and independent nurseries	47	2117	52	2182

The data in this table was correct as of August 2022. There is a number of new settings that we expect to open within the next few months, this will increase the number of registered places in the PVI sector by at least 60.

There has been a decrease in the number of childminders in the borough, this is due to various reasons, including a change of personal circumstances, deregistering from the early years register to solely care for children over the age of 5, not having enough children to make the business profitable and the price which parents are able to afford to pay for childcare making the business unsustainable.

There are an additional 24 childminders who only offer childcare for children 5 and above offering an additional 144 places to the number of places in the table above.

We have 28 Ofsted registered home carers in Thurrock. Home carers look after children in the family home. 35% of the home carers look after children at Thurrock addresses. The remaining 65% offer services outside of the borough.

Early years vacancies

Vacancy rates are a snapshot, and often change rapidly. In some cases, providers may have a vacancy which is only available for a specific age group, or for a particular part time arrangement.

We ask providers to report vacancies on the ASK Thurrock website and to keep this information up to date. Not all chose to do this. In general, vacancy rates are higher in the autumn, when children move to school. We have commented on vacancies within the ward data from the information that has been provided to us for expected vacancies rates in September 2022.

Early years atypical hours

Childcare is most commonly delivered during the typical working day – between 8am and 6pm on weekdays. Some parents require childcare outside these times in order to fit with their work or other responsibilities.

The number of providers offering childcare for atypical hours in our local authority is below.

Type of provision	Number of providers	Available before 8am weekday	Available after 6pm weekday	Available weekends	Available overnight	Available school holidays
Childminders	125	70	41	10	2	83
School's nurseries	30	9	0	Not applicable	Not applicable	Not applicable
Private, voluntary and independent nurseries	47	20	20	0	0	28

Number of school age providers and places

In total, there are 226 providers of childcare for school age children during term time, and 135 providers of childcare for school age children during the holidays. Of the total number, 149 childminders may provide care for school age children during term time.

Although Thurrock secondary schools do not offer breakfast and after school childcare clubs, all Thurrock secondary schools offer extra curriculum activities before and after school.

Many Thurrock primary schools also offer before and after school activities. The list below is the number of provisions that offer childcare places rather than activity-based programmes.

Type of provision	Number of providers	Number of registered places
Breakfast club – Primary school	28	840
Breakfast club – Secondary school	0	0
Breakfast care – Childminders*	85	543 for under 8s.
Breakfast club – Private, voluntary and independent (PVI) providers	11	584
Total breakfast care	124	1,967
After-school club – Primary school	15	450
After-school club – Secondary school	0	0
After School care – Childminders*	93	699 for under 8s.

Type of provision	Number of providers	Number of registered places
After school club – Private, voluntary and independent (PVI) providers	10	300
Total after school care	118	1,449
Holiday club – Primary school	2	60
Holiday club – Secondary school	0	0
Holiday care – Childminders*	105	510
Holiday club – Private, voluntary and independent (PVI) providers	11	503
Total holiday care	118	1,073

* Childminder data is difficult to break down into specific places for breakfast, afterschool due to lack of meaningful response numbers from this group of providers to Provider Audit requests. We can assume that if a childminder only offers term-time care, this will reduce the number of holiday care places offered and is shown as such.

Holiday Activity and Food (HAF) programme

The HAF programme provides free holiday provision including healthy eating and enriching activities for children from reception to year 11 who receive benefit related free schools' meals.

Research has shown that the school holidays can be pressure points for some families. For some children this can lead to a holiday experience gap, with children from low-income households being:

- less likely to access organised out-of-school activities
- more likely to experience 'unhealthy holidays' in terms of nutrition and physical health
- more likely to experience social isolation

Our HAF programme is a response to this issue, with evidence showing that free holiday clubs can have a positive impact on children and young people, and that they work best when they:

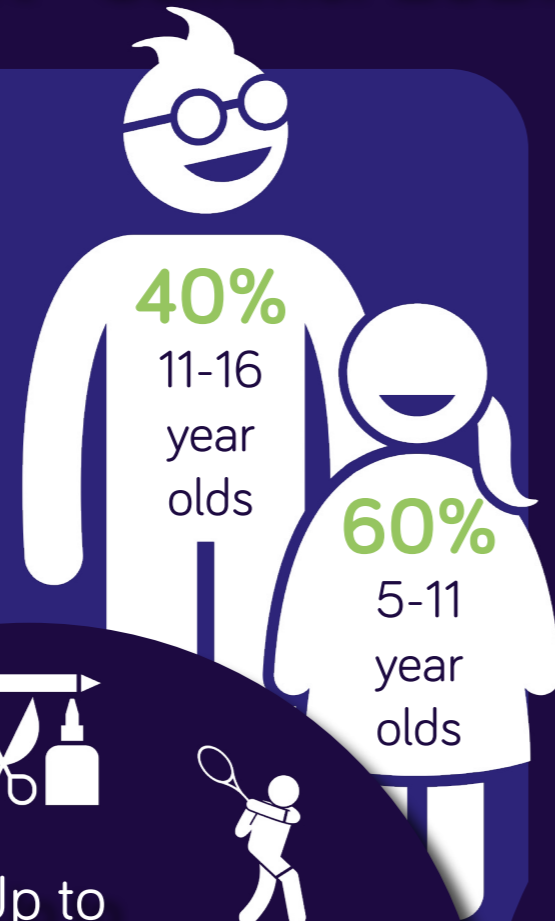
- provide consistent and easily accessible enrichment activities
- cover more than just breakfast or lunch
- involve children (and parents) in food preparation
- use local partnerships and connections, particularly with the voluntary and community organisation sector

Data for summer 2022 is not yet available, data below for summer term 2021.

The Clubs



25 CLUBS ...including **10** with provision for 11-16 year olds



Children & Young People Supported

74% of attendees across Essex & Thurrock were not meeting daily recommended activity level prior to joining



The Impact



28,000+ school standard meals provided - **90%** hot food



Average of **90 mins** physical and **60 mins** enrichment activity per session, for every child



12 different food education activities on offer across clubs

92%

of families across Essex & Thurrock reported a positive impact on their child's physical & mental wellbeing



The free hot meals were very helpful and my children had a great variety to choose from. Plus, the outdoor activities were great as we live in a flat!

2,371

individual children & young people engaged!

These clubs had a great impact on my children's wellbeing. They enjoyed trying new foods and making friends. All the staff were supportive, helpful and caring!



3 specialist SEND organisations



1 specialist Mental Wellbeing organisation



Who We Worked With



Approx. **300** coaches & activity leads



5 school venues



12 local food providers



A **major** supermarket chain



Multiple Community Voluntary Services

Wider Support

Virtural family support from:



55 online sessions
3,000 seed packs
2,000 activity packs, with **80+** activities

Take-up of funded early education

The proportion of eligible children taking up their funded place (for at least some of the available hours) in our local authority at Summer Term 2022. The fall in numbers for the take up of 15 hours funding is likely due the impact of the COVID-19 and the uncertainty on providers and parents followed by the reversal as the uncertainty eased.

Age	% of eligible children taking up places 2022	% of eligible children taking up places 2021	% of eligible children taking up places nationally 2022
Age 2	76.33%	71%	72%
Age 3 and 4	87%	88%	92%

3 year-old and 4 year-old funded entitlement applications

Parents who think they are entitled to a 30 hour extended hours place apply for this online through the government's Childcare Support website.

The same website is used to apply for tax free childcare and parents can apply for either or both.

If a parent is eligible, the system creates a code which they can use with their chosen childcare provider. If they are ineligible, they will still be entitled to the universal 15 hours of early education and childcare.

Applying for 30 hours funding	Number of families, summer term 2021
New applications for a place	485
Eligible for a place	1,961
Accessing a place	1,261

The data in this table is based on Department for Education data in summer term 2022.

Prices of early school years childcare

For early year's childcare outside the funded entitlements, we report on average prices per hour, reported to us by settings. There may be variations to prices based on the number of hours a family uses, with reductions for longer hours, or discounts for sibling groups.

There may be additional payments for additional services – for example, lunch and other meals that are not included in these prices.

Price per hour	Private, voluntary and independent nurseries	School and maintained nursery schools that make charges to parents	Childminders
0 and 1 year-olds	£6.10	N/A	£4.42
2 year-olds	£5.13	£4.33	£4.40
3 year-olds and 4 year-olds	£5.85	£4.49	£4.40

Prices of school age

For school age children during term time, we report on average prices before school per day, after school per day, and for childminding per hour. For holiday childcare, we report on holiday club prices per week.

Setting and price unit	Price
Breakfast club per day	£3.96
After-school club per day	£12.50
School age childminder per hour	£4.56
Holiday club per week	£137.50

Childcare sufficiency ward data – summer term 2022

2 year-old entitlement

The number of families shown as eligible for the 2 year-old entitlement is based on information provided by the Department of Work and Pensions (DWP) and relates to families who meet the financial eligibility criteria or whose children are in receipt of Disability Living Allowance. It does not include children outside of these criteria – for example, eligible due to their immigration status. The figures used are taken from the March 2022 DWP list.

Quality of provision

Once a provider is registered on the Ofsted Early Years Register as a 'new provider', Ofsted will carry out the provisions first inspection within 30 months, during this time the provision does not have an Ofsted quality judgement. Subsequent inspections take place at least once every 6 years after that.

The Ofsted inspections evaluate the overall quality and standards of its early years provision in line with the principles and requirements of the 'Statutory framework for the EYFS'.

Inspectors use a 4-point scale to make all judgements.

- grade 1: outstanding
- grade 2: good
- grade 3: requires improvement
- grade 4: inadequate

Where there are no early years children on roll or present, no grades will be given against the 4 key judgements. A judgement is made only on the 'Overall quality and standards of the early years provision', with one of 3 possible outcomes:

Outcome	Description
Met	No actions, possible suggestions to improve practice
Not met with actions	The provider does not meet one or more of the learning and development requirements and/or safeguarding and welfare requirements actions Compulsory actions to be completed by the provider.

Outcome	Description
Not met with enforcement	Significant areas where the provider does not meet one or more of the learning and development requirements and/or safeguarding and welfare requirements. Ofsted will use their regulatory powers to enforce compliance with the law and to improve the quality of services.

Based on the following formula, the sufficiency need in each ward has been calculated.

Childcare sufficiency is based on the number of Ofsted registered places excluding reception in school.

Total number of children in ward – 20% (parental choice not to access childcare, chosen childcare outside of ward or borough) = number of children in ward likely to take up childcare.

It is expected 90% of 4 year-olds will be accessing a place in a reception class in school from September. The total number of children expected to access childcare is indicated in bold. (10% of totals 4 year-olds in ward)

There are no maintained nurseries in Thurrock.

Several providers have reported their vacancies/waiting list for each ward. This has been considered when commenting on the need to create places.

This data is considering vacancies and children starting school in September 2022.

Aveley and Uplands

Data item	Numbers
Number of 2 year-olds in the ward	170
Number of 3 years-olds in the ward	168
Number of 4 years-olds in the ward	204
10% of 4 year-olds requiring childcare	20
Total of age groups who may require childcare provision	358
Ofsted registered places excluding school reception classes	224
**Ofsted registered school reception places	120
Total number of Ofsted registered places	344
Number of families eligible for 2 year-olds entitlement	29
Number of accessing 2 year-olds funding	21
Number of 3- and 4 year-olds accessing funding	216
Number of day nurseries	2
Number of pre-schools	2

Data item	Numbers
Number of school nurseries	2
Number of primary schools	2
Number of childminders	5
Quality of provision – day nurseries	50% good or better – 50% awaiting inspection
Quality of provision – pre-schools	50% good or better – 50% awaiting inspection
Quality of provision – primary schools	50% good or better – 50% awaiting inspection
Quality of provision – childminders	20% good or better – 80% Met
**Total number of children likely to take up childcare places	286
Vacancies	One full day nursery has a small number of vacancies although childminders have indicated they have waiting lists.
Do we have sufficient childcare places in this ward?	No

Belhus

Data item	Numbers
Number of 2 year-olds in the ward	188
Number of 3 year-olds in the ward	154
Number of 4 year-olds in the ward	187
10% of 4 year-olds requiring childcare	19
Total of age groups who may require childcare provision	361
Ofsted registered places excluding school reception places.	229
Number of school reception places	210
Total number of Ofsted registered places	439
Number of families eligible for 2 year-old entitlement	47
Number of accessing 2 year-old funding	27
Number of 3 and 4 year-olds accessing funding	293
Number of day nurseries	2
Number of pre-schools	1
Number of school nurseries	4
Number of primary schools	4
Number of childminders	2

Data item	Numbers
Quality of provision – day nurseries	100% 'Good' or better
Quality of provision – pre-schools	100% awaiting inspection
Quality of provision – primary schools	50% good or better – 50% waiting inspection
Quality of provision – childminders	100% good or better
**Total number of children likely to take up places	289
Do we have sufficient early childcare places in this ward?	No
Is there a need to create places?	Yes – A large proportion of places are within schools who do not offer holiday care. Full day care/holiday care is required

Chadwell St Mary

Data item	Numbers
Number of 2 year-olds in the ward	167
Number of 3 year-olds in the ward	168
Number of 4 years olds in the ward	162
10% of 4 year-olds requiring childcare	17
Total of age groups who may require childcare	352
Ofsted registered places excluding school reception classes	211
**Ofsted registered school reception places	90
Total Ofsted registered places	301
Number of families eligible for 2 year-old entitlement	67
Number of accessing 2 year-old funding	44
Number of 3 and 4 year-olds accessing funding	228
Number of day nurseries	3
Number of pre-schools	1
Number of school nurseries	0
Number of primary schools	2
Number of childminders	6
Quality of provision – day nurseries	100% Good or better
Quality of provision – pre-schools	66% good or better – 33% waiting inspection
Quality of provision – primary schools	100% good or better

Data item	Numbers
Quality of provision – childminders	34% Good or better – 66% awaiting inspection
**Total number of children likely to take up places	282
Vacancies	A new full day care has recently opened which has a small number of vacancies
Do we have sufficient early childcare places in this ward?	No
Is there a need to create places?	Yes

Chafford and North Stifford

Data item	Numbers
Number of 2 year-olds in the ward	113
Number of 3 year-olds in the ward	129
Number of 4 year-olds in the ward	120
10% of 4 year-olds requiring childcare	12
Total of both age groups who may require childcare	254
Ofsted registered places excluding school reception classes	282
**Ofsted registered school reception places	90
Ofsted registered places	372
Number of families eligible for 2 year-old entitlement	24
Number of accessing 2 year-old funding	11
Number of 3 and 4 year-olds accessing funding	191
Number of day nurseries	1
Number of pre-schools	1
Number of school nurseries	1
Number of primary schools	1
Number of childminders	13
Quality of provision – day nurseries	100% Good' or better
Quality of provision – pre-schools	100% Good or better
Quality of provision – primary schools	100% Good or better
Quality of provision – childminders	77% Good or better – 15% waiting inspection – 8% Met
**Total number of children likely to take up places	203

Data item	Numbers
Vacancies	Childminders is this ward have vacancies
Do we have sufficient early childcare places in this ward?	Yes
Is there a need to create places?	No

Corringham and Fobbing

Data item	Numbers
Number of 2 year-olds in the ward	37
Number of 3 year-olds in the ward	67
Number of 4 years olds in the ward	47
10% of 4 year-olds requiring childcare	5
Total of both age groups who may require childcare	109
Ofsted registered places excluding school reception classes	84
**Ofsted registered school reception places	60
Total Ofsted registered places	144
Number of families eligible for 2 year-old entitlement	9
Number of accessing 2 year-old funding	10
Number of 3 and 4 year-olds accessing funding	85
Number of day nurseries	0
Number of pre-schools	1
Number of school nurseries	1
Number of primary schools	1
Number of childminders	2
Quality of provision – day nurseries	No day nurseries
Quality of provision – pre-schools	100% Waiting inspection
Quality of provision – primary schools	100% Good or better
Quality of provision – childminders	100% Good or better
**Total number of children likely to take up places	87
Do we have sufficient childcare places in this ward?	Yes
Is there a need to create places?	No

East Tilbury

Data item	Numbers
Number of 2 year-olds in the ward	116
Number of 3 year-olds in the ward	106
Number of 4 year-olds in the ward	115
10% of 4 year-olds requiring childcare	6
Total of both age groups who may require childcare	228
Ofsted registered places excluding school reception classes	148
**Ofsted registered school reception places	120
Total Ofsted registered places	268
Number of families eligible for 2 year-old entitlement	31
Number of accessing 2 year-old funding	33
Number of 3 and 4 year-olds accessing funding	132
Number of day nurseries	1
Number of pre-schools	0
Number of school nurseries	0
Number of primary schools	1
Number of childminders	4
Quality of provision – day nurseries	100% 'Good' or better
Quality of provision – pre-schools	No pre-schools
Quality of provision – primary schools	100% Good or better
Quality of provision – childminders	25% Good or better – 75% waiting inspection
**Total number of children likely to take up places	182
Vacancies	Full day care setting has vacancies in this ward along with 50% of childminders
Do we have sufficient childcare places in this ward?	No – The number of vacancies is not sufficient to allow all parents to access childcare
Is there a need to create places?	Yes

Grays Riverside

Data item	Numbers
Number of 2 year-olds in the ward	294
Number of 3 year-olds in the ward	287

Data item	Numbers
Number 4 year-olds in the ward	287
10% of 4 year-olds requiring childcare	29
Total of both age groups who may require childcare	610
Ofsted registered places excluding school reception classes	338
**Ofsted registered school reception places	90
Total Ofsted registered places	428
Number of families eligible for 2 year-old entitlement	81
Number of accessing 2 year-old funding	48
Number of 3 and 4 year-olds accessing funding	263
Number of day nurseries	4
Number of pre-schools	0
Number of school nurseries	1
Number of primary schools	1
Number of childminders	4
Quality of provision – day nurseries	75% Good or better – 25% waiting inspection
Quality of provision – pre-schools	No pre-schools
Quality of provision – primary schools	100% Good or better
Quality of provision – childminders	100% Good or better
**Total number of children likely to take up places	488
Do we have sufficient childcare places in this ward?	No
Is there a need to create places?	Yes

Grays Thurrock

Data item	Numbers
Number of 2 year-olds in the ward	125
Number of 3 in the ward	128
Number of 4 year-olds in the ward	135
10% of 4 year-olds requiring childcare	13
Total of both age groups who may require childcare	266

Data item	Numbers
Ofsted registered places excluding school reception classes	200
** Ofsted registered school reception places	270
Total Ofsted registered places	470
Number of families eligible for 2 year-old entitlement	30
Number of accessing 2 year-old funding	20
Number of 3 and 4 year-olds accessing funding	193
Number of day nurseries	0
Number of pre-schools	2
Number of school nurseries	2
Number of primary schools	3
Number of childminders	10
Quality of provision – day nurseries	No day nurseries
Quality of provision – pre-schools	50% Good or better -50% Requirements Improvement
Quality of provision – primary schools	100% Good or better
Quality of provision – childminders	70% Good or better – 10% Met – 20% awaiting inspection
**Total number of children likely to take up places	213
Vacancies	Pre-schools in this ward have a waiting list. Childminders are showing vacancies
Do we have sufficient childcare places in this ward?	Yes
Is there a need to create places?	No

Little Thurrock Blackshots

Data item	Numbers
Number of 2 year-olds in the ward	95
Number of 3 year-olds in the ward	100
Number of 4 year-olds in the ward	89
10% of 4 year-olds requiring childcare	10
Total of both age groups who may require childcare	205
Ofsted registered places excluding school reception classes	135

Data item	Numbers
**Ofsted registered school reception places	124
Total Ofsted registered places	259
Number of families eligible for 2 year-old entitlement	27
Number of accessing 2 year-old funding	19
Number of 3 and 4 year-olds accessing funding	89
Number of day nurseries	0
Number of pre-schools	1
Number of school nurseries	2
Number of primary schools	1
Number of special schools	1 – Treetops Academy: this provision provides nursery and reception places according to need and is not included in the figures above
Number of childminders	10
Quality of provision – day nurseries	No day nurseries
Quality of provision – pre-schools	100% Good or better
Quality of provision – primary schools	100% Good or better
Quality of provision – childminders	70% Good or better – 10% awaiting inspection – 20% Met
**Total number of children likely to take up places	164
Do we have sufficient childcare places in this ward?	No
Is there a need to create places?	Yes

Little Thurrock Rectory

Data item	Numbers
Number of 2 year-olds in the ward	112
Number of 3 year-olds in the ward	91
Number of 4 year-olds in the ward	74
10% of 4 year-olds requiring childcare	7
Total of both age groups who may require childcare	210
Ofsted registered places excluding school reception classes	124
**Ofsted registered school reception places	90
Total Ofsted registered places	214

Data item	Numbers
Number of families eligible for 2 year-old entitlement	11
Number of accessing 2 year-old funding	9
Number of 3 and 4 year-olds accessing funding	172
Number of day nurseries	1
Number of pre-schools	0
Number of school nurseries	1
Number of primary schools	1
Number of childminders	5
Quality of provision – day nurseries	100% 'Good' or better
Quality of provision – pre-schools	No pre-schools
Quality of provision – primary schools	100% awaiting inspection
Quality of provision – childminders	80% Good or better – 20% awaiting inspection
**Total number of children likely to take up places	168
Do we have sufficient childcare places in this ward?	No
Is there a need to create places?	Yes

Ockendon

Data item	Numbers
Number of 2 year-olds in the ward	193
Number of 3 year-olds in the ward	182
Number of 4 year-olds in the ward	184
10% of 4 year-olds requiring childcare	18
Total of both age groups who may require childcare	393
Ofsted registered places excluding school reception classes	248
**Ofsted registered school reception places	120 – plus special needs places
Total Ofsted registered places	368
Number of families eligible for 2 year-old entitlement	49
Number of accessing 2 year-old funding	33
Number of 3 and 4 year-olds accessing funding	177
Number of day nurseries	2

Data item	Numbers
Number of pre-schools	1
Number of school nurseries	3 – includes one special school
Number of primary schools	3 – includes one special school
Number of special schools	1 – Beacon Hill Academy: this provision provides nursery and reception places according to need, and its places are not included in the figures above.
Number of childminders	9
Quality of provision – day nurseries	100% Good or better
Quality of provision – pre-schools	100% Good or better
Quality of provision – primary schools	66% Good or better – 34% awaiting inspection
Quality of provision – childminders	67% Good or better – 22% awaiting inspection – 11% Met
**Total number of children likely to take up places	314
Vacancies	Full day care settings have waiting lists
Do we have sufficient childcare places in this ward?	No
Is there a need to create places?	Yes – need for full day care places

Orsett

Data item	Numbers
Number of 2 year-olds in the ward	66
Number of 3 year-olds in the ward	56
Number of 4 year-olds in the ward	58
10% of 4 year-olds requiring childcare	6
Total of both age groups who may require childcare	128
Ofsted registered places excluding school reception classes	85
**Ofsted registered school reception places	72
Total Ofsted registered places	157
Number of families eligible for 2 year-old entitlement	7
Number of accessing 2 year-old funding	6
Number of 3 and 4 year-olds accessing funding	65
Number of day nurseries	0

Data item	Numbers
Number of pre-schools	1
Number of school nurseries	1
Number of primary schools	3
Number of childminders	4
Quality of provision – day nurseries	No day nurseries
Quality of provision – pre-schools	100% Good or better
Quality of provision – primary schools	33% Good or better – 33% awaiting inspection – 33% Requirements improvement.
Quality of provision – childminders	75% Good or better – 25% Met
**Total number of children likely to take up places	102
Vacancies	Childminders in this ward are reporting vacancies
Do we have sufficient childcare places in this ward?	No
Is there a need to create places?	Yes

South Chafford

Data item	Numbers
Number of 2 year-olds in the ward	115
Number of 3 year-olds in the ward	122
Number of 4 year-olds in the ward	120
10% of 4 year-olds requiring childcare	12
Total of both age groups who may require childcare	249
Ofsted registered places excluding school reception classes	311
Ofsted registered school reception places	300
Total Ofsted registered places	611
Number of families eligible for 2 year-old entitlement	16
Number of accessing 2 year-old funding	14
Number of 3 and 4 year-olds accessing funding	248
Number of day nurseries	2
Number of pre-schools	0
Number of school nurseries	3

Data item	Numbers
Number of primary schools	3
Number of childminders	12
Quality of provision – day nurseries	100% 'Good' or better
Quality of provision – pre-schools	No pre-schools
Quality of provision – primary schools	75% Good or better -25% awaiting inspection
Quality of provision – childminders	75% Good or better – 25% Met
**Total number of children likely to take up places	199
Do we have sufficient childcare places in this ward?	Yes
Is there a need to create places?	No

Stanford East and Corringham Town

Data item	Numbers
Number of 2 year-olds in the ward	111
Number of 3 year-olds in the ward	107
Number of 4 year-olds in the ward	109
10% of 4 year-olds requiring childcare	11
Total of both age groups who may require childcare	229
Ofsted registered places excluding school reception classes	236
**Ofsted registered school reception places	240
Total Ofsted registered places	476
Number of families eligible for 2 year-old entitlement	25
Number of accessing 2 year-old funding	21
Number of 3 and 4 year-olds accessing funding	285
Number of day nurseries	0
Number of pre-schools	3
Number of school nurseries	2
Number of primary schools	4
Number of childminders	6
Quality of provision – day nurseries	No day nurseries
Quality of provision – pre-schools	100% Good or better
Quality of provision – primary schools	75% Good or better – 25% awaiting inspection

Data item	Numbers
Quality of provision – childminders	67% Good or better – 33% awaiting inspection
**Total number of children likely to take up places	183
Do we have sufficient childcare places in this ward?	Yes
Is there a need to create places?	No

Stanford-le-Hope West

Data item	Numbers
Number of 2 year-olds in the ward	119
Number of 3 year-olds in the ward	127
Number of 4 year-olds in the ward	106
10% of 4 year-olds requiring childcare	11
Total of both age groups who may require childcare	257
Ofsted registered places excluding school reception classes	230
**Ofsted registered school reception places	45
Total Ofsted registered places	275
Number of families eligible for 2 year-old entitlement	25
Number of accessing 2 year-old funding	15
Number of 3 and 4 year-olds accessing funding	231
Number of day nurseries	4
Number of pre-schools	0
Number of school nurseries	2 – includes special needs class
Number of primary schools	2
Number of childminders	3
Quality of provision – day nurseries	100% 'Good' or better
Quality of provision – pre-schools	No pre-schools
Quality of provision – primary schools	50% Good or better – 50% awaiting inspection
Quality of provision – childminders	33% Good or better – 33% awaiting inspection – 33% Met
**Total number of children likely to take up places	206
Do we have sufficient childcare places in this ward?	Yes

Data item	Numbers
Is there a need to create places?	No

Stifford Clays

Data item	Numbers
Number of 2 year-olds in the ward	62
Number of 3 years olds in the ward	73
Number of 4 year-olds in the ward	96
10% of 4 year-olds requiring childcare	10
Total of both age groups who may require childcare	145
Ofsted registered places excluding school reception classes	110
**Ofsted registered school reception places	90
Total Ofsted registered places	200
Number of families eligible for 2 year-old entitlement	16
Number of accessing 2 year-old funding	8
Number of 3 and 4 year-olds accessing funding	132
Number of day nurseries	0
Number of pre-schools	1
Number of school nurseries	1
Number of primary schools	1
Number of childminders	6
Quality of provision – day nurseries	No day nurseries
Quality of provision – pre-schools	100% Good or better
Quality of provision – primary schools	100% Good or better
Quality of provision – childminders	67% Good or better – 33% awaiting inspection.
**Total number of children likely to take up places	116
Do we have sufficient childcare places in this ward?	Yes
Is there a need to create places?	No

The Homesteads

Data item	Numbers
Number of 2 year-olds in the ward	66

Data item	Numbers
Number of 3 year-olds in the ward	91
Number of 4 year-olds in the ward	88
10% of 4 year-olds requiring childcare	9
Total of both age groups who may require childcare	166
Ofsted registered places excluding school reception classes	27
**Ofsted registered school reception places	No reception places
Total Ofsted registered places	27
Number of families eligible for 2 year-old entitlement	11
Number of accessing 2 year-old funding	12
Number of 3 and 4 year-olds accessing funding	20
Number of day nurseries	0
Number of pre-schools	0
Number of school nurseries	0
Number of primary schools	0
Number of childminders	4
Quality of provision – day nurseries	No day nurseries
Quality of provision – pre-schools	No pre-schools
Quality of provision – primary schools	No primary schools
Quality of provision – childminders	100% Good or better
**Total number of children likely to take up places	133
Vacancies	All childminders in this ward have reported waiting lists.
Do we have sufficient childcare places in this ward?	No
Is there a need to create places?	Yes – This ward has limited childcare places with only childminders offering childcare provision although there are vacancies in the neighbouring wards.

Tilbury Riverside and Thurrock Park

Data item	Numbers
Number of 2 year-olds in the ward	141
Number of 3 year-olds in the ward	145

Data item	Numbers
Number of 4 year-olds in the ward	174
10% of 4 year-olds requiring childcare	17
Total of both age groups who may require childcare	303
Ofsted registered places excluding school reception classes	183
**Ofsted registered school reception places	300
**Total Ofsted registered places	483
Number of families eligible for 2 year-old entitlement	53
Number of accessing 2 year-old funding	52
Number of 3- and 4 year-olds accessing funding	175
Number of day nurseries	2
Number of pre-schools	0
Number of specialist provision	1 – Sunshine Centre: this provision can take up to 52 early years children for selected sessions, and its places are not included in the figures above
Number of school nurseries	2
Number of primary schools	0
Number of childminders	4
Break out special needs centre	1
Quality of provision – day nurseries	50% Good or better – 50% awaiting inspection
Quality of provision – pre-schools	100% Met
Quality of provision – primary schools	50% Good or better – 50% awaiting inspection
Quality of provision – childminders	25% Good or better – 50% awaiting inspection – 25% Met
Quality of provision – break out special needs centre	100% met
**Total number of children likely to take up places	242
Vacancies	A number of vacancies reported by the two full day care providers
Do we have sufficient childcare places in this ward?	No
Is there a need to create places?	Yes

Tilbury St Chads

Data item	Numbers
Number of 2 year-olds in the ward	115
Number of 3 year-olds in the ward	121
Number of 4 year-olds in the ward	126
10% of 4 year-olds requiring childcare	13
Total of both age groups who may require childcare	249
Ofsted registered places excluding school reception classes	157
**Ofsted registered school reception places	120
Total Ofsted registered places	277
Number of families eligible for 2 year-old entitlement	39
Number of accessing 2 year-old funding	31
Number of 3- and 4 year-olds accessing funding	130
Number of day nurseries	1
Number of pre-schools	0
Number of school nurseries	2
Number of primary schools	2
Number of childminders	2
Quality of provision – day nurseries	100% Requires improvement
Quality of provision – pre-schools	No pre-schools
Quality of provision – primary schools	100% Good or better
Quality of provision – childminders	100% waiting inspection
**Total number of children likely to take up places	199
Vacancies	Very limited vacancies reported in this ward
Do we have sufficient childcare places in this ward?	No
Is there a need to create places?	Yes

West Thurrock and South Stifford

Data item	Numbers
Number of 2 year-olds in the ward	262
Number of 3 year-olds in the ward	278

Data item	Numbers
Number of 4 year-olds in the ward	298
10% of 4 year-olds requiring childcare	30
Total of both age groups who may require childcare	570
Ofsted registered places excluding school reception classes	430
**Ofsted registered school reception places	150
Total Ofsted registered places	580
Number of families eligible for 2 year-old entitlement	58
Number of accessing 2 year-old funding	52
Number of 3- and 4 year-olds accessing funding	302
Number of day nurseries	4
Number of pre-schools	0
Number of school nurseries	2
Number of primary schools	2
Number of childminders	14
Quality of provision – day nurseries	100% Good or better
Quality of provision – pre-schools	No pre-schools
primary schools	100% Good or better
Quality of provision – childminders	29% Good or better – 15% Met – 42% waiting inspection – 14% Not met
**Total number of children likely to take up places	456
Do we have sufficient childcare places in this ward?	No
Is there a need to create places?	Yes – there is need for places for all age groups but a particular need for 2 year-old's places.

This data is correct as of summer term 2022.

Some 4 years-olds will be accessing reception class provision in schools.

Parents may choose to take up their funding entitlement at settings outside of their ward or out of borough.

Quality of childcare in our area

Ofsted inspection grades

Type of provision	Total number of providers 2022	% Achieving good or outstanding 2022	Total number of providers 2021	% Achieving good or outstanding 2021
Childminders on EY Register	125	99%	134	98 %
Nursery classes in schools *	30	100%	28	100%
Private and voluntary nurseries	47	99%	52	96%

School percentages are for schools who have an Ofsted judgement.

For more information, go to <https://reports.ofsted.gov.uk/about-our-inspection-reports>

Parents views of sufficiency in our local area

Parent survey

An online parent survey took place from April 2022 to May 2022. Parents were asked a variety of questions on how easy it is to access suitable childcare and the affordable ability of childcare. The results of the survey have been analysed below:

From the number of parents who responded to the survey the main reason for accessing childcare is to enable parents to work.

Most parents stated they find it very easy or easy to find suitable childcare although 53% stated the cost was prohibitive.

65% of parents are satisfied with the childcare they receive,.69% stated the staff and settings were welcoming, 66% stated the children had enough access to outside space and 66% felt they were kept well informed of their child's progress.

75% of parents who responded were aware of access to free childcare.

FIS enquiry data

FIS:

- is continuing to develop Thurrock's Local Offer Website
- has completed a project with our providers to encourage them to advertise their childcare on our website – we have had a huge number either add a listing or amend their current one, which has been a success
- has created a Childcare Vacancy page for our providers to list their vacancies – although it has only recently been created, quite a few providers have already used this platform and a lot of providers have registered their interest in this cost-free way of being able to advertise for staff

Economic regeneration and new housing

Economic regeneration and new housing developments will increase the demand for childcare.

It is imperative that new housing developments are taken into account when planning any new early education and childcare places.

The table below gives details of ongoing and potential developments of more than 20 units per development by ward.

The Childcare Sufficiency Officer is consulted on all developments to ensure childcare is considered at the planning application stage.

The figures below include developments which may have started but still have yield.

Potential development of more than 20 units, yield 0 to 11 years

Ward	Planning Permission or development already started and producing yield	Possible yield 2022 to 2027 for early years and primary	Further proposed units as at August 2022	Possible yield 2022 to 2027 for early years and primary
Aveley and Uplands	0	0	0	0
Belhus	33	12	173	33
Chadwell St Mary	207	52	61	7
Chafford and North Stifford	0	0	0	0
Corringham and Fobbing	220	67	0	0
East Tilbury	18	7	230	106
Grays Riverside	102	22	81	5
Grays Thurrock	73	18	87	17
Little Thurrock Blackshots	0	0	0	0
Little Thurrock Rectory	75	23	0	0
Ockendon	92	8	27	10
Orsett	80	29	750	279
South Chafford	0	0	2,500	195
Stanford East and Corringham Town	34	3	95	6
Stanford le Hope West	279	105	92	11
Stifford Clays	0	0	0	0
The Homesteads	0	0	0	0
Tilbury Riverside and Thurrock Park	98	7	0	0

Ward	Planning Permission or development already started and producing yield	Possible yield 2022 to 2027 for early years and primary	Further proposed units as at August 2022	Possible yield 2022 to 2027 for early years and primary
Tilbury St Chads	0	0	52	3
West Thurrock and South Stifford	3300	513	0	0

Data correct as of 17 August 2022.

Methodology

Source materials:

- number of children – based on population projections from <https://www.ons.gov.uk/peoplepopulationandcommunity/populationandmigration/populationprojections/bulletins/subnationalpopulationprojectionsforengland/2019based>
- Figure 6: Population age structure by single year of age and sex for local authorities, counties, regions and England as a whole, mid-2016 to mid-2041
- children with EHC plans – based on data held by Thurrock Council
- supply of childcare – based on data provided to us by Ofsted who regulate early years provision in schools and childcare provision, and Thurrock Council data – in some cases, we have supplemented this with local intelligence where providers are not registered with Ofsted
- Ofsted registered places data – calculated on how many children can attend a setting in anyone time
- childcare for parents working atypical hours – data held by Thurrock Council
- funded early education – data on take-up of funded early education entitlements is based on the Early Years and Schools Censuses, which are taken every January and published by the Department for Education in the statistical collection Education provision: children under five years of aged
- data on entitlement to a funded early education place for 2 year-olds – provided by the Department for Work and Pensions and local authority data
- price of childcare – collected by Provider Audit Spring Term 2022 and data held by Thurrock Council
- quality of childcare – data on childcare quality is provided by Ofsted
- data from parents – data held by Thurrock Council from parent survey.