

**Thurrock Council**  
**Childcare Sufficiency Report**  
**August 2023**



# Authoring and copyright

<b>Report produced by</b>	Sue Lamkin, Business Support and Sufficiency Officer, School Effectiveness Team, Children's Services.
<b>Copyright</b>	Report published by Thurrock Council, January 2024.

## Other formats and languages

For a large print, braille, disc, sign language or audio-tape version of this document, please contact us below:

- by post – Thurrock Council, Civic Offices, New Road, Grays, RM17 6SL
- by phone – 01375 652 744

You will need to supply your name, your postal address and state the format and title of the publication you require.

If you would like a summary of this document in your language, please phone the number or contact us at the address above.

# Contents

<b>Overall assessment and summary .....</b>	<b>5</b>
<b>Overall sufficiency and level of provision.....</b>	<b>5</b>
Government-funded early education for 2 year-olds .....	6
Universal (15 hour) funded early education and childcare for 3 year-olds and 4 year-olds .....	7
Childcare before and after school and holiday provision .....	7
Childcare for children with special educational needs and disabilities (SEND).....	7
Childcare during atypical hours – outside 8am and 6pm on weekdays .....	8
<b>Quality of childcare .....</b>	<b>8</b>
<b>Our plans for childcare as stated in CSA 2022 .....</b>	<b>8</b>
<b>Recruitment and retention concerns for Thurrock.....</b>	<b>11</b>
Recruitment and retention – the national and international picture .....	12
Changing perceptions of the early years career path .....	12
Changing the narrative.....	13
Training.....	13
<b>Demand for early education and childcare .....</b>	<b>15</b>
Population of early year's children .....	15
Population of school-age children.....	15
Changes to population of children in our area .....	15
Number of children with special educational needs and disabilities.....	16
<b>Supply of early education and childcare.....</b>	<b>17</b>
Number of early years providers and places.....	17
Early years vacancies .....	18
Early years atypical hours.....	18
Number of school age providers and places.....	19
Holiday Activity and Food (HAF) programme funded by the DfE .....	20
Take-up of funded early education .....	21
3 year-old and 4 year-old funded entitlement applications.....	21
Prices of early school years childcare.....	21
Prices of school age .....	22
<b>Childcare sufficiency ward data – summer term 2023 .....</b>	<b>22</b>
2 year-old entitlement .....	22
Quality of provision .....	22
Aveley and Uplands.....	24
Belhus.....	25
Chadwell St Mary.....	26
Chafford and North Stifford .....	27
Corryingham and Fobbing .....	28

East Tilbury.....	29
Grays Riverside .....	30
Grays Thurrock.....	31
Little Thurrock Blackshots.....	32
Little Thurrock Rectory.....	33
Ockendon .....	34
Orsett.....	35
South Chafford.....	36
Stanford East and Corringham Town.....	37
Stanford-le-Hope West .....	38
Stifford Clays .....	39
The Homesteads .....	40
Tilbury Riverside and Thurrock Park.....	41
Tilbury St Chads .....	43
West Thurrock and South Stifford.....	44
<b>Heat map by ward.....</b>	<b>45</b>
<b>Quality of childcare in our area.....</b>	<b>45</b>
Ofsted inspection grades .....	45
<b>Parents views of sufficiency in our local area .....</b>	<b>46</b>
Parent survey.....	46
<b>Family Information Service (FIS) enquiry data .....</b>	<b>46</b>
<b>Economic regeneration and new housing .....</b>	<b>46</b>
<b>Childcare reforms.....</b>	<b>48</b>
Background.....	48
Existing childcare offer.....	48
Spring Budget 2023 – transforming childcare .....	48
Universal Credit .....	49
Current demand May 2023 .....	50
September 2024 – new entitlement phase 2.....	51
Early years childcare supply .....	52
Early years childcare places needed .....	53
Wraparound Childcare: supply of on-school site childcare .....	53
<b>Our plans for 2023/2024.....</b>	<b>54</b>
Our key objectives from the plan .....	55
<b>Methodology .....</b>	<b>56</b>

## Overall assessment and summary

The council is required by law to report annually to the elected council members on how we are meeting our duty to secure sufficient childcare in our borough, as set out in the Childcare Act 2006. This report is available and accessible to parents. We have prepared this report to meet this duty.

Having sufficient childcare means that families can find childcare that meets their child's learning needs and enables parents to make a real choice about work and training. This applies to all children from birth to the age of fourteen, and to children with disabilities.

Parents accessing Universal Credit and childcare may be able to claim back up to 85% of their childcare costs.

[www.gov.uk/help-with-childcare-costs/universal-credit](http://www.gov.uk/help-with-childcare-costs/universal-credit)

Working parents responsible for a child or children and pay for childcare may be able to get extra help with the costs. This is through the childcare element of Working Tax Credit.

[www.gov.uk/government/publications/working-tax-credit-help-with-the-costs-of-childcare-wtc5](http://www.gov.uk/government/publications/working-tax-credit-help-with-the-costs-of-childcare-wtc5)

Sufficiency is assessed for separate groups, rather than for all children in the local authority.

In this report, we have assessed sufficiency using data about the need for childcare and the amount of childcare available, and feedback from local parents about how easy or difficult it has been for them to find suitable childcare.

We use information about childcare sufficiency to plan our work supporting the local childcare economy.

The Childcare Sufficiency Report also:

- sets out the principles and planning guidelines on early years both nationally and locally
- provides demographic and contextual picture of the early year's provision in Thurrock
- provides information on the demand of childcare in Thurrock including data in relation to children with special educational needs and or disability (SEND), school-age children and the take up of funded early education places
- provides an indication of the supply, quality, and affordability of childcare across the borough
- provides childcare sufficiency data, population of 2 year-olds, 3 year-olds and 4 year-olds and number of childcare providers by ward
- provides details of the take-up of the 30 hours free childcare entitlement
- provides details of future planning and developments and population increases/decreases.
- details how we plan to support childcare sufficiency in the borough.
- details our implementation plan for the new childcare entitlements.

## Overall sufficiency and level of provision

To ensure overall childcare sufficiency Thurrock Council will continue to collaborate with providers to offer sustainable yet affordable childcare in Thurrock. The council works with providers to ensure the offer and prices are similar to its geographical neighbours. Thurrock Council officers work with providers to guarantee good quality education and childcare places are available to those parents who wish to access early education and childcare.

Recruitment of qualified and non-qualified staff remains challenging for providers. This is a national as well as a local concern. Details of how the council is supporting providers can be found on page 11 of this report.

Financial sustainability is also a concern as the level of government funding does not reflect the actual cost of providing places. With the cost-of-living crisis, this is having an even greater impact on settings being viable.

Due to the council's on-going support, only one setting that offered full day care provision closed due to financial unsustainability. Another provider has taken over the premises so the reduction in childcare places is minimal.

Since August 2022, 4 new childcare providers have opened in Thurrock:

- 2 in Stanford-le-Hope West ward creating 62 places
- 1 in Chadwell St Mary creating 25 places
- 1 in Grays Riverside creating 32 places

Although the opening of these settings has released some of the pressure on places in the Chadwell St Mary and Grays Riverside wards Thurrock has a deficit of places in these wards.

The number of childminders and the number of early years places they provide has remained static. This is against the national trend where childminder places are reducing. Thurrock Council School Effectiveness Team offers childminder induction training termly to ensure we support potential new childminders to run a successful business thus maintaining/increasing the number of childcare places.

89% of schools provide nursery provision for children aged 3 to 5 offering 1,005 places. Thurrock Council's School Effectiveness Team continue to work with schools to increase this number.

There are sufficiency challenges in several wards in west of the borough and in the Tilbury area and Grays Riverside wards. Central Grays area has sufficient places with the east of the borough having a surplus of places. For parents to access childcare to remain in work, sufficient childcare places need to be available in all Thurrock wards.

With the government childcare reforms, Thurrock Council anticipates there will be a greater demand for early years places for children aged 0 to 5 and wrap-around care for school age children aged 5 to 11 and Special Educational Needs and Disabilities (SEND) children up to 18. Places will need to be created in all wards to allow parents to access the new childcare entitlements. Later in this report are full details of the reforms and the council's plans to meet the new entitlements.

## **Government-funded early education for 2 year-olds**

The take up of 2-year entitlement funding within the borough has exceeded the national average for both the spring and autumn terms for the last 5 years. For only the second time (the other being during the COVID pandemic) we did not meet the national average for summer 2023. The figure reflects a shortfall of 6 children not accessing their funding.

This was primarily due to one provider in the Tilbury St Chads ward and two in the Tilbury Riverside and Thurrock Park ward receiving Inadequate Ofsted judgments. This grade meant that the council was unable to place new children in these three settings until they were re-inspected.

As a result, the number of children living in Tilbury who were accessing their funding fell from 84 children in spring 2022 to 60 children in summer 2023. With the help of the School Effectiveness Team all three settings have now moved from an Inadequate Ofsted judgement and are able to accept funded 2 year-olds.

## **Universal (15 hour) funded early education and childcare for 3 year-olds and 4 year-olds**

The council has not received any parental feedback that parents cannot gain a place for their child's universal entitlement. There are parents who choose not to access early years childcare for this age group.

Our data is suggesting that not all parents entitled to 30 hours entitlement are choosing to access a place. (Details on page 21)

## **Childcare before and after school and holiday provision**

A variety of different providers offer before school and after school care. 74% of our schools offer breakfast clubs with 46% also offering after school clubs.

Just under half of our full day-care settings offer breakfast and after school clubs for school age children. 78% of childminders offer wraparound care. We have not received any feedback from parents that they cannot access before and after school care.

Parents can access a variety of childcare options during the holidays which supports parents to find or stay in work. 78% of our childminders offer holiday care. A small proportion of our full day care nursery offer holiday provision for school age children.

We also have a 3 dedicated holiday care schemes. Parents also have the option to choose activity led programmes during the holidays rather than childcare places. The range of options available ensures parents have choice when choosing holiday care.

Thurrock accesses the government-funded Holiday Activity Funding (HAF) which offers free holiday activities to children in receipt of free school meals. Details of our offer can be found on page 20 of this report.

## **Childcare for children with special educational needs and disabilities (SEND)**

Entitlement places exist for all children including those with SEND. All early years providers offer SEND provision as required by the Equality Act 2010.

Early years settings and childminders sometimes find it difficult to meet the needs of those children with complex or high needs. Providers are limited by financial sustainability as SEND children with high or complex needs requiring places beyond 15 or 30 hours require additional support that would not be funded through early years entitlement.

Additional support is available to settings via the Early Years Inclusion Fund and Disability Access Fund (DAF). Details of these funding streams can be found on pages 16 and 17 of this report.

Parents can access information on childcare options including the range of expertise to support children with SEND via Ask Thurrock: SEND Local Offer –

[www.thurrock.gov.uk/localoffer](http://www.thurrock.gov.uk/localoffer)

Thurrock Council's Early Years SENCO works closely with settings to ensure there are suitable places for SEND children. The School Effectiveness Team proactively market the take up of Early Years Inclusion funding and DAF funding, ensuring the grants are being used by settings to support early years children with SEND.

The council runs regular training and forums to further support and improve SEND provision. The lack of places for working parents of the higher need SEND children who require full time wraparound care can cause a barrier to work.

A new setting is due to start the Ofsted registration process shortly it will focus on providing 25 places for SEND children with high needs which will support parents to access work. Recruitment is proving a barrier to opening however the School Effectiveness Team is supporting with this challenge.

The Sunshine Centre based in Tilbury offers care for children up to the age of 18 with both behavioural and physical disability. The centre offers holiday and respite care.

The Holiday Activity Fund is available to children accessing benefit based free school meals and SEND children meeting the criteria – see details on page 20 of this report.

### **Childcare during atypical hours – outside 8am and 6pm on weekdays**

For parents to access work outside of normal working hours, atypical childcare is required. Full details of the offer in Thurrock are reported on page 18 of this report. We have not received feedback from parents they are not able to access atypical hours childcare.

## **Quality of childcare**

Thurrock Council continues to work with providers to deliver high quality provision and to achieve a good or outstanding Ofsted. The council has a team of highly experienced early years officers who work closely with providers at risk of not meeting this standard to improve their practice to ensure good outcomes for our youngest children.

Under the guidance of the Early Years Officers, all private, voluntary and independent (PVI) providers in Thurrock undertake a safeguarding and welfare audit at least every 18 months.

From Autumn term 2023 all funded childminders will receive a quality assurance assessment visit to review safeguarding and welfare requirements and the quality of the learning and development offered for children aged 0 to 5.

## **Our plans for childcare as stated in CSA 2022**

<b>What we said</b>	<b>What we have done</b>
Continue encouraging providers, including schools, to participate in the 30 hours' entitlement offer to enable more working parents to access their full entitlement.	Promotion of 30 hours entitlement has been increased via the council's social media channels. We have also updated the Local Offer website to give parents further information on accessing the 30-hour entitlement.



What we said	What we have done
Sustain the take-up of the 2 year-old offer.	Families can apply for 2-year entitlement (2YE) funding either via My Account or by direct contact with the 2YE team. The 2 year-old Entitlement Officer receives regular lists from the Department of Work and Pensions of potentially eligible families and contact them to gather information needed to establish their eligibility. Social media helps us to promote entitlement funding and we also receive support from childcare providers across Thurrock in signposting families to this service.
Support providers to offer or access wraparound care for working parents	Identifying providers who will be able to expand to offer the new entitlement for September 2024. Promoting wraparound care as an offer to childminders to make their business more sustainable.
Provide training, mentoring and inclusion support for childcare providers to raise standards	<p>The School Effectiveness Team offers a comprehensive termly training programme to all providers to raise welfare and education standards in settings. We encourage practitioners to attend the following bimonthly forums:</p> <ul style="list-style-type: none"> <li>• Providers' / Managers' Forum</li> <li>• SENCO Forum</li> <li>• Childminder's Forum</li> <li>• 0-2 Year-Old Forum</li> <li>• Safeguarding Forum</li> </ul> <p>These forums give an opportunity for providers to be updated with national and local information and to network with colleagues and discuss issues they are facing. All forums are well attended.</p> <p>Bespoke training is also available for individual settings to support Ofsted recommendations.</p>
Continue to provide business and financial advice to childcare providers	This is a standing item on the agenda for the Managers/Providers Forums and tailored advice and information is given during visits to providers. Financial guidance and supporting documents are available in the Early Years Resources Library of the Services to Schools (EY) website. Any business information/guidance released by the DfE, government, and so on, is shared at forums and in the regular EY newsletters.

What we said	What we have done
Support settings with recruitment and retention of good quality staff	Please see details of Recruitment and Retention on page 11 of this report
Provide dedicated officers to work closely with new providers to offer support and advice – including market research, business planning, identifying suitable premises, planning applications, staff recruitment and staffing ratios	A new settings procedure is in place with dedicated officers to support from the first initial contact, the Ofsted Registration process through to opening. New Settings Officer's support continues until first Ofsted inspection has taken place.
Support further early years education and childcare development across the borough where regeneration and new housing is taking place	Childcare Sufficiency Officer (CSO) comments on planning applications to ensure childcare is considered at the early stages of any housing development. The CSO works closely with Pupil Place Planning Team to consider nursery places in relation to the creation of new school places.
Support new settings ensuring welfare requirements and learning and development are delivered to a good standard from opening	Each new setting is supported by a dedicated Welfare and Learning and Development Officer. Officers visit settings to complete a new settings welfare and learning and development RAG and offer support and advice where improvements are required. New childminders receive a pre-registration audit visit. Continued support is on-going for settings and childminders.
Undertake safeguarding and welfare red-amber-green (RAG) audits of settings to monitor the quality of provision to support them to achieve a good or better Ofsted judgement.	<p>Welfare RAGs are completed with providers on a priority basis. Any providers with less than green outcomes are offered support, advice, training and given recommendations and actions to complete to improve practice with follow up visits planned to monitor progress. (Focused Improvement Plan).</p> <p>Any less than green Welfare RAG outcomes are added to Settings Causing Concerns meetings for discussion. Actions against the FIP are reviewed and updated.</p>
Consider early education future needs before decisions are taken in relation to capital assets across the local authority	The School Effectiveness team are working with asset management to identify early years settings which operate out of council premises so this can be considered before any decision is taken in relation to the capital asset.

What we said	What we have done
Increase the take-up of Early Years Inclusion Funding by streamlining our application process and continuing to engage with settings via SENCO forums, early years training and officer's support	After due consideration a decision not to amend the application process was made as our process is in line with most other local authorities. To encourage applications officers have run workshop for settings, attended forums to promote the funding and support with the application process. When required officers have made individual setting visits to support with applications.
Review the outcomes of the parental survey to ensure good quality childcare is available to all parents including parents of SEND children.	The annual parental survey took place in March 2023. Results have been analysed and included on page 46 of this report.
To continue to work with Essex County Council to ensure flexible childcare is available for emergency services colleagues across the two boroughs	Progress has been slow as we have found it difficult to engage with all the emergency services.
Increase the percentage of children eligible to take up 15-hours funding	A social media campaign has taken place advertising the childcare choices website to inform parents of childcare options.
Targeted approach to work with new and existing providers to increase the number of places in wards with a deficit	On going social media campaign across all council channels to promote childminding as a career. New setting officers work with new and existing providers to identify wards with a deficit of places as priority to develop and/or extend business.

## Recruitment and retention concerns for Thurrock

With continuing concerns around the recruitment and retention of early years staff in Thurrock, the School Effectiveness Team has worked hard to facilitate and develop relationships with professional bodies, the Department for Work and Pensions, Further Education Colleges, Secondary Schools, and the Inspire Team to raise the profile of early years and promote it as a rewarding career.

The team worked collaboratively with partners to deliver the first ever Early Years Recruitment Fair in Thurrock in June 2023, which was an enormous success and attended by over 150 people as well as all partners, many providers had display stands. Several providers recruited quality staff. The team plan to use the success from the recruitment fair as a platform to facilitate an annual event.

The School Effectiveness Team (SET) has also been successful in creating a video 'A Rewarding Career in Early Years', which features practitioners working across Thurrock settings to champion and promote the work they do, in the hope that this will encourage interest in the sector. The video will be edited and then shared with providers to use in their settings and on their social media channels. The council will also use the video to promote a career in early years via all our channels.

The SET continues to work with over 40 other local authorities nationally through our Strategic Recruitment and Retention group where we share concerns, discuss shared experiences, and find solutions to the problems the sector faces.

## **Recruitment and retention – the national and international picture**

A recent Ofsted report, which draws on evidence from international research, as well as a survey and round table discussion with representatives of inspectorates and early years academics from various European countries, considers recruitment and retention challenges to be down to low wages, feeling undervalued, poor working conditions and limited opportunities for professional development.

Ofsted's annual report was published on 13 December 2022, and in a press release accompanying the report, HMCI Amanda Spielman said that "problems recruiting and retaining staff must be urgently addressed". She noted that the sector is losing staff to higher-paid employment and that nurseries have been forced to close because they cannot recruit or retain high-quality staff. She also pointed out that some settings "have become over-reliant on apprentices to fill gaps" with a knock-on effect on education and safeguarding.

Ofsted are clear on the issues caused for settings by challenges in recruitment, retention, and sustainability. They identify that there were "problems retaining high-quality, qualified and experienced staff" before the pandemic, and that this has worsened, with the sector competing with and losing out to higher paid roles. There has been a net overall decrease of around 5,410 providers, the largest annual decrease since 2015/16.

Although the report states that retention issues have not affected the profile of inspection judgements so far, it may do so in the future, if experienced and qualified staff continue to leave the sector. Ofsted points out that experienced staff who leave the sector "take with them a wealth of experience, knowledge and commitment to children".

The report notes that issues around recruitment and retention "can lead to a lack of continuity and consistency in education and care for children".

There is a strong focus on curriculum in Ofsted's annual report, noting that the "weakest providers often do not know what a coherent curriculum looks like" and that struggles to implement a curriculum "may be linked to recruitment issues and reliance on less experienced staff".

To resolve the issues in the sector, the IPPR report recommends that government should 'invest significantly' through a new funding settlement, based on rates paid in the maintained sector. Alongside this, they suggest a childcare workforce strategy with higher rates of pay and higher qualification levels, with local authorities maintaining standards and managing local supply.

A report by Coram Family on sector-wide **recruitment crisis** was also found to be impacting the daily operations of childcare settings, with 71 per cent of local authorities saying they were finding it very difficult to recruit staff with the required qualifications and experience.

Some 69% per cent of local authorities added that the sustainability of providers had been negatively impacted by problems recruiting and retaining staff.

## **Changing perceptions of the early years career path**

A national awareness campaign needs to focus on the critical importance of early childhood education on a child's development and life chances and portray the crucial role early years

professionals play in supporting this. It should emphasise that this is a skilled role, equivalent to teaching in other phases of education.

## Changing the narrative

There must be a shift away from the 'childcare' terminology so frequently used to 'early childhood education', to position the sector as a phase within the education journey rather than only a means of enabling parents to work.

## Training

The DfE are delivering free training to support practitioners to increase their knowledge and skills in child development. Thurrock Council promotes this training to providers and encourage them to engage with it.

Many providers are struggling to release staff onto training courses and there is a growing reliance on online training. This has benefits in reducing time and costs but can be detrimental to insights gained from face-to-face training, where sharing reflective practice, discussions and getting hands-on experience is far more beneficial.

The DfE has launched the National Professional Qualification in Early Years Leadership (NPQEYL). This is the first large-scale qualification that can be accessed by all leaders in practice without cost both in state-maintained settings and private and voluntary initiatives, but managers are often unable to find the time to attend training and CPD opportunities themselves as they are more regularly needed to cover staff shortages. Many managers do not undertake CPD for themselves as they do not have an effective support system in place to champion their own well-being and development.

The DfE recovery programme has provided some opportunities for additional support to some providers, but this is short term and has more of a focus on helping the setting to make improvements in relation to Ofsted outcomes, rather than being direct support and mentoring for the managers.

In terms of qualification training, there remains a need for a review of the taught curriculum for Early Years and education courses, so that they are more focused on the EYFS, child development and practical experiences that will better support students when they enter the workplace.

**Thurrock Council continues to focus on working to support Early Years providers with the recruitment and retention of staff. Our action plan below sets out some of the strategies we are working on.**

Problem	Solution	Action
Early entry of students into the childcare sector.	The intention is to increase the promotion of Childcare based GCSEs being delivered in our secondary schools. Encourage Early Years providers to take on work experience students.	Continue to work with the Inspire team and secondary schools to build on the partnerships made and to promote early years career options and information through open days, presentations, and other promotional events. Attend Head Teachers meetings or ensure information is

Problem	Solution	Action
	Work with DfE and LGA to influence more research and action on this.	<p>provided to be included on the agendas.</p> <p>Continue to lobby the DfE, LGA and other government bodies to support sector.</p> <p>Encourage more providers to become industry champions.</p>
Recruiting qualified staff at level 2 and 3.	Find ways to access students completing childcare qualifications at Further Education providers.	Further develop partnerships with South Essex College, Thurrock Adult Community College, United SEEVIC and Palmers colleges. Continue to attend recruitment fairs, presentations, events to promote vacancies and recruitment opportunities. Plan an annual recruitment fair to tie with students completing college courses who will be looking for employment.
Encouraging qualified staff back into the sector.	Finding ways to work with the employment sector to reach and attract staff who may wish to return.	Working with DWP and FE colleges to run recruitment events and to advise and offer CPD training to refresh knowledge and confidence to return to the sector.
Encouraging take up of Childcare introductory courses.	<p>Work with FE providers and DWP to promote the sector and attract people into qualifications.</p> <p>Target over 50s market.</p>	Work with DWP and SEC on the sector-based work programme iLearn childcare. Promote this through forums and newsletters to providers. Encourage providers to attend the recruitment events.
Support providers with advertising vacancies and attracting people into the sector.	Use council resources to promote vacancies and attract people into the sector through advertising and website.	<p>Improve links with Communication's team for a revamp of the social media campaign and adding the promotional video.</p> <p>Review the vacancy page on the Local Offer website to ensure it is reaching the target audience.</p>
Increase people entering apprenticeships and raise the profile.	Promote Childcare apprenticeships at level 2, 3, 4, 5.	Working with TACC, SEC, USP and other apprenticeship providers to promote training and qualifications in early years.

# Demand for early education and childcare

## Population of early year's children

In 2022 there were 13,104 children under the age of five living in our local authority. In 2023 there are 12,261, a decrease of 843 children. As a percentage this is a decrease of 6.44% overall.

### Numbers by age

Age	Number of children 2023	Number of children 2022	Percentage increase / decrease
Age 0	2,287	2,453	-6.77%
Age 1	2,442	2,529	-3.44%
Age 2	2,452	2,643	-7.22%
Age 3	2,526	2,700	-6.44%
Age 4	2,554	2,779	-8.00%

These children may require childcare, although some 4 years old will be in school.

## Population of school-age children

In total there are 17,797 children aged 5-11, and 7,509 children aged 12-14 living in our local authority. These children may require childcare before and after school, and/or during the school holidays.

### Numbers by age

Age	Number of children 2023	Number of children 2022	Percentage increase/decrease
Age 5	2,542	2,790	-8.89%
Age 6	2,651	2,616	1.34%
Age 7	2,557	2,686	-4.80%
Age 8	2,434	2,740	-11.16%
Age 9	2,513	2,698	-6.86%
Age 10	2,553	2,470	3.36%
Age 11	2,547	2,492	2.20%
Age 12	2,414	2,625	-8.04%
Age 13	2,485	2,421	2.64%
Age 14	2,609	2,318	12.55%

## Changes to population of children in our area

In Thurrock the population size has increased by 11.6% from around 157,700 in 2011 to 176,000 in 2021. The overall increase for England is 6.5%.

\*This data is birth rate data from ONS – ward data figures may differ.

## Number of children with special educational needs and disabilities

Children with special education needs and disabilities (SEND) are entitled to support with childcare up to the age of 18 (or 14 for children who do not have a special need or disability). The funding is there to help providers deliver extra support to children who are displaying emerging additional needs. The extra funding could be used by providers to pay for things such as additional equipment or staff training to support the child.

The numbers of children with an education, health, and care (EHC) plan in our local authority is below:

Age	Number of children summer term 2023	Number of children summer 2022	Number of children summer 2021
Birth to school age	82	70	76
Primary school (reception to year six)	866	857	775
Secondary school (year seven to thirteen)	963	902	838

There has been an increase of 4.48% EHC plan agreed from July 2022 to July 2023. This was expected due to the population increase of approximately 11%.

Some children have SEND but do not have the need for an EHC plan. Therefore, the number of EHC plans for early year's children is low.

For an EHC plan to be agreed, two specific criteria must be met:

- *whether the child or young person has or may have special educational needs*
- *whether they may need special educational provision to be made through an EHC plan*

Children aged 3 and 4 who have low level or emerging special education needs or disability and do not have an Education Health Care Plan (EHCP) may be entitled to early years inclusion funding.

Period	Number of children accessing Early Years Inclusion funding
From summer term 2022 to summer term 2023	26
From summer term 2021 to summer term 2022	47
From summer term 2020 to summer term 2021	83

This is a decrease from the previous year of 44.6%. We have seen an increase in referrals for single children rather than groups of children which would explain the decrease in uptake. Part of this funding has been agreed for children who show potential language difficulties to access an early year's talking toolkit which is designed to support young children to be able to talk and understand words so they can access all areas of the Early Years Foundation Curriculum (EYFS)



Early years providers can access the Disability Access Fund. The fund is to support settings make reasonable adjustments to their settings if they have identified special education needs or disabilities children within their setting.

Number of settings accessing DAF funding summer term 2023	Number of settings accessing DAF funding summer term 2022	Number of children being supported
29	20	33

This is an increase of 45%.

Children claiming Disability Living Allowance will also be receiving DAF funding. As at 31st July 2023 45 children were entitled to DAF funding. 23 of these have an EHCP plan and 23 were reviving SEND support.

High needs funding is available for SEND children from early years up to 25 years. The funding supports provision for their educational needs.

Number of early years children accessing high needs funding 2023	Number of early years children accessing high needs funding 2022	Number of early years children accessing high needs funding 2021
38	26	6

This is an increase of 46%.

Early years providers have received training to help with early identification of needs, which has resulted in more children being identified at an earlier age for both Disability Access Funding (DAF) and higher needs funding. Early identification and intervention should reduce the need to access SEND services once children enter school.

All the above figures are correct at the end of summer term 2023.

## Supply of early education and childcare

### Number of early years providers and places

In total, there are 200 early years childcare providers in our local authority, offering 4,029 registered childcare places.

Type of provision	Number of registered providers 2023	Number of registered places 2023	Number of providers 2022	Number of registered places 2022	Number of providers 2021	Number of registered places 2021
Childminders	124	810	125	835	153	981

Type of provision	Number of registered providers 2023	Number of registered places 2023	Number of providers 2022	Number of registered places 2022	Number of providers 2021	Number of registered places 2021
Nursery classes in schools – this figure excludes 2 specialist SEND nurseries	29	1,005	28	986	28	841
Private, voluntary and independent nurseries	47	2,214	46	2,117	52	2,182

\*The data in this table is correct as of August 2023.

The Sunshine Centre is not included in the private, voluntary and independent nurseries figure. It is a specialist provision for children aged 5 to 10 but does offer some early years provision if required.

We have two specialists SEND school nurseries which provide 11 places these are not included in the above figures.

There are an additional 28 childminders who only offer childcare for children 5 and above offering an additional 168 places to the number of places in the table above. This is an increase of 17% on the previous year of over 5s registered places.

We have 30 Ofsted registered home carers in Thurrock. Home carers look after children in the family home, 49% of these home carers look after children in the borough within 41% looking after children outside of Thurrock.

## Early years vacancies

Vacancy rates are a snapshot, and often change rapidly. In some cases, providers may have a vacancy which is only available for a specific age group, or for a particular part time arrangement.

Providers report vacancies at the beginning of the Autumn term and are required to keep this information up to date on the ASK Thurrock website. Many providers do not response to our request for this information. Vacancy rates are higher in the autumn when children move to school. We have commented on vacancies within the ward data from the information that has been provided to us.

## Early years atypical hours

Childcare is mostly delivered during the typical working day – between 8am and 6pm on weekdays. Some parents require childcare outside these times to fit with their work or other responsibilities.

The number of providers offering childcare for atypical hours in our local authority is as follows.

Type of provision	Number of providers	Available before 8am weekday	Available after 6pm weekday	Available weekends	Available overnight	Available school holidays
Childminders	124	83	40	9	5	97
School's nurseries	29	5	2	Not applicable	Not applicable	Not applicable
Private, voluntary and independent nurseries	47	28	21	1	0	31 (full day care setting)

These figures exclude dedicated SEND, PVI's and school nursery.

### Number of school age providers and places

Although Thurrock secondary schools do not offer breakfast and after school childcare clubs, all Thurrock secondary schools offer extra curriculum activities before and after school.

Many Thurrock primary schools also offer before and after school activities. The list below is the number of provisions that offer childcare places rather than activity-based programmes.

Type of provision	Number of providers	Number of registered places
Breakfast club – Primary school	29	1,408
Breakfast club – Secondary school	0	0
Breakfast club – Private, voluntary and independent (PVI) providers	19	421
<b>Total breakfast care (excluding childminders)</b>	<b>48</b>	<b>1,829</b>
After-school club – Primary school	10	798
After-school club – Secondary school	0	0
After school club – Private, voluntary and independent (PVI) providers	20	463
<b>Total after school care (excluding childminders)</b>	<b>30</b>	<b>1,261</b>
Holiday club – Primary school	1	40
Holiday club – Secondary school	0	0
Holiday club – Private, voluntary and independent (PVI) providers	12	292
<b>Total holiday care (excluding childminders)</b>	<b>13</b>	<b>304</b>
<b>*Childminder wraparound care</b>	<b>97</b>	<b>586</b>

\* Childminder data is difficult to break down into specific places for breakfast, afterschool and holiday provision due to lack of meaningful response numbers from this group of providers to Provider Audit requests. We can assume that if a childminder only offers term-time care, this will reduce the number of holiday care places offered and is shown as such. Therefore, we have only reported on the number of childminders who offer wraparound care including school holiday care for children aged 0- 11.

## **Holiday Activity and Food (HAF) programme funded by the DfE**

The HAF programme provides free holiday provision including healthy eating and enriching activities for children from reception to year 11 who receive benefit related free schools' meals.

Research has shown that the school holidays can be pressure points for some families. For some children this can lead to a holiday experience gap, with children from low-income households being:

- less likely to access organised out-of-school activities.
- more likely to experience 'unhealthy holidays' in terms of nutrition and physical health.
- more likely to experience social isolation.

Our HAF programme is a response to this issue, with evidence showing that free holiday clubs can have a positive impact on children and young people, and that they work best when they:

- provide consistent and easily accessible enrichment activities.
- cover more than just breakfast or lunch.
- involve children (and parents) in food preparation.
- use local partnerships and connections, particularly with the voluntary and community organisation sector.

Data for summer 2023 is not yet available, data below for summer term 2022.

Please click on pdf for data.

## Take-up of funded early education

The proportion of eligible children taking up their funded place (for at least some of the available hours) in our local authority at Summer Term 2023.

Age	% of eligible children taking up places 2023	% of eligible children taking up places nationally 2023	% of eligible children taking up places 2022	% of eligible children taking up places nationally 2022
Age 2	72.14%	74%	76.33%	72%
Age 3 and 4	87%	94%	87%	92%

## 3 year-old and 4 year-old funded entitlement applications

Parents who think they are entitled to a 30 hour extended hours place apply for this online through the government's Childcare Support website, [www.childcarechoices.gov.uk](http://www.childcarechoices.gov.uk)

The same website is used to apply for tax free childcare and parents can apply for either or both.

If a parent is eligible, the system creates a code which they can use with their chosen childcare provider. If they are ineligible, they will still be entitled to the universal 15 hours of early education and childcare.

Applying for 30 hours funding	Number of families, summer term 2023	Number of families summer term 2022
New applications for a place	247	485
Eligible for a place	1,452	1,961
Accessing a place	1,205	1,261

The data in this table is based on Department for Education data in summer term 2023.

## Prices of early school years childcare

For early year's childcare outside the funded entitlements, we report on average prices per hour, reported to us by settings. There may be variations to prices based on the number of hours a family uses, with reductions for longer hours, or discounts for sibling groups.

There may be additional payments for additional services – for example, lunch and other meals that are not included in these prices.

Price per hour	Private, voluntary and independent nurseries	School and maintained nursery schools that make charges to parents	Childminders
Under 2s	£6.81	N/A	£4.73
Under 3s	£6.76	£5.37	£4.71
Under 4s	£6.31	£5.37	£4.67

## Prices of school age

For school age children during term time, we report on average prices before school per hour, after school per session and for childminding per hour. For holiday childcare, we report on holiday club prices per week.

Setting and price unit	Price
Breakfast club per hour	£4.66
After-school club per session	£14.11
School age childminder per hour breakfast and after school	£4.59
Holiday club per week	£162.65

## Childcare sufficiency ward data – summer term 2023

### 2 year-old entitlement

The number of families shown as eligible for the 2 year-old entitlement is based on information provided by the Department of Work and Pensions (DWP) and relates to families who meet the financial eligibility criteria or whose children are in receipt of Disability Living Allowance. It does not include children outside of these criteria – for example, eligible due to their immigration status.

The data is based on an average calculated over three terms. Percentages have been rounded up. The number of eligible children is taken from lists received from the Department of Work and Pensions sent November 2022, March 2023 and August 2023 (these data sets are used to calculate take up for the Department of Education). Ward data reflects the child's home address. Children may access a childcare setting outside of their home ward.

### Quality of provision

Once a provider is registered on the Ofsted Early Years Register as a 'new provider', Ofsted will carry out their first inspection visit within 30 months. During this period the provision does not have an Ofsted quality judgement. Subsequent inspections take place at least once every 6 years after that.

Ofsted evaluate the overall quality and standards of early years provisions in line with the principles and requirements of the 'Statutory framework for the EYFS'.

Inspectors use a 4-point scale to make all judgements:

- grade 1 – outstanding
- grade 2 – good
- grade 3 – requires improvement
- grade 4 – inadequate

Where there are no early years children on roll or present, no grades will be given against the 4 key judgements. A judgement is made only on the 'Overall quality and standards of the early years provision', with one of 3 possible outcomes:

Outcome	Description
Met	No actions, possible suggestions to improve practice
Not met with actions	The provider does not meet one or more of the learning and development requirements and/or safeguarding and welfare requirements actions Compulsory actions to be completed by the provider.
Not met with enforcement	Significant areas where the provider does not meet one or more of the learning and development requirements and/or safeguarding and welfare requirements. Ofsted will use their regulatory powers to enforce compliance with the law and to improve the quality of services.

**Based on the following formula, the sufficiency need in each ward has been calculated.**

Childcare sufficiency is based on the number of Ofsted registered places excluding reception in school.

Total number of children in ward – 20% (parental choice not to access childcare, chosen childcare outside of ward or borough) = number of children in ward likely to take up childcare.

It is expected 90% of 4 year-olds will be accessing a place in a reception class in school from September. The total number of children expected to access childcare is indicated in bold. (10% of totals 4 year-olds in ward)

There are no maintained nurseries in Thurrock.

Several providers have reported their vacancies/waiting list for each ward. This has been considered when commenting on the need to create places.

This data is considering vacancies and children starting school in September 2023.

## Aveley and Uplands

Data item	Numbers
Number of 2 year-olds in the ward	170
Number of 3 year-olds in the ward	168
Number of 4 year-olds in the ward	204
Estimate only 10% of 4 year-olds will require childcare as they are accessing education in school reception classes	20
<b>Total of age groups who may require childcare provision</b>	<b>358</b>
<b>Ofsted registered places excluding school reception classes</b>	<b>254</b>
**Ofsted registered school reception places	120
Total number of Ofsted registered places	374
Number of families eligible for 2 year-old entitlement	34
Number of accessing 2 year-old funding	31
Number of 3 year-olds and 4 year-olds accessing funding	152
Number of day nurseries	2
Number of pre-schools	2
Number of school nurseries	2
Number of primary schools	2
Number of childminders	6
Quality of provision – day nurseries	100% good or better
Quality of provision – pre-schools	100% good or better
Quality of provision – primary schools	100% good or better
Quality of provision – childminders	29% good or better 14% new 29% met 14% requires improvement 14% effective
<b>**Total number of children likely to take up places</b>	<b>286</b>
Do we have sufficient early childcare places in this ward?	Considering the vacancies reported, there is sufficient places. Local knowledge would indicate a small deficit of places by spring term



## Belhus

Data item	Numbers
Number of 2 year-olds in the ward	188
Number of 3 year-olds in the ward	154
Number of 4 year-olds in the ward	187
Estimate only 10% of 4 year-olds will require childcare as they are accessing education in school reception classes	19
<b>Total of age groups who may require childcare provision</b>	<b>361</b>
<b>Ofsted registered places excluding school reception places</b>	<b>235</b>
Number of school reception places	210
Total number of Ofsted registered places	445
Number of families eligible for 2 year-old entitlement	46
Number of accessing 2 year-old funding	24
Number of 3 year-old and 4 year-olds accessing funding	197
Number of day nurseries	2
Number of pre-schools	1
Number of school nurseries	4
Number of primary schools	4
Number of childminders	4
Quality of provision – day nurseries	100% good or better
Quality of provision – pre-schools	100% good or better
Quality of provision – primary schools	75% good or better 25% waiting inspection
Quality of provision – childminders	100% good or better
<b>**Total number of children likely to take up places</b>	<b>289</b>
Do we have sufficient early childcare places in this ward?	No
Vacancies	29 full day care
Is there a need to create places?	Medium need to create places

## Chadwell St Mary

Data item	Numbers
Number of 2 year-olds in the ward	167
Number of 3 year-olds in the ward	168
Number of 4 year-olds in the ward	162
Estimate that only 10% of 4 year-olds will require childcare as they are accessing education in school reception classes	16
<b>Total of age groups who may require childcare</b>	<b>351</b>
<b>Ofsted registered places excluding school reception classes</b>	<b>197</b>
**Ofsted registered school reception places	90
Total Ofsted registered places	287
Number of families eligible for 2 year-old entitlement	67
Number of accessing 2 year-old funding	44
Number of 3 year-olds and 4 year-olds accessing funding	212
Number of day nurseries	3
Number of pre-schools	1
Number of school nurseries	0
Number of primary schools	2
Number of childminders	7
Quality of provision – day nurseries	100% good or better
Quality of provision – pre-schools	100% awaiting inspection
Quality of provision – primary schools	100% good or better
Quality of provision – childminders	44% good or better 28% new 14% requires improvement 14% not met with actions
<b>**Total number of children likely to take up places</b>	<b>281</b>
Do we have sufficient early childcare places in this ward?	No
Is there a need to create places?	Yes

## Chafford and North Stifford

Data item	Numbers
Number of 2 year-olds in the ward	113
Number of 3 year-olds in the ward	129
Number of 4 year-olds in the ward	120
Estimate that only 10% of 4 year-olds will require childcare as they are accessing education in school reception classes	12
<b>Total of age groups who may require childcare</b>	<b>254</b>
<b>Ofsted registered places excluding school reception classes</b>	<b>293</b>
**Ofsted registered school reception places	90
Total Ofsted registered places	383
Number of families eligible for 2 year-old entitlement	17
Number of accessing 2 year-old funding	12
Number of 3 year-olds and 4 year-olds accessing funding	180
Number of day nurseries	1
Number of pre-schools	1
Number of school nurseries	1
Number of primary schools	1
Number of childminders	15
Quality of provision – day nurseries	100% good or better
Quality of provision – pre-schools	100% good or better
Quality of provision – primary schools	100% good or better
Quality of provision – childminders	53% good or better 20% waiting inspection 20% met 7% effective
<b>**Total number of children likely to take up places</b>	<b>203</b>
Do we have sufficient early childcare places in this ward?	Yes
Is there a need to create places?	No

## Corringham and Fobbing

Data item	Numbers
Number of 2 year-olds in the ward	37
Number of 3 year-olds in the ward	67
Number of 4 year-olds in the ward	47
Estimate only 10% of 4 year-olds will require childcare as they are accessing education in school reception classes	5
<b>Total of age groups who may require childcare</b>	<b>109</b>
<b>Ofsted registered places excluding school reception classes</b>	<b>90</b>
**Ofsted registered school reception places	60
Total Ofsted registered places	150
Number of families eligible for 2 year-old entitlement	9
Number of accessing 2 year-old funding	9
Number of 3 year-olds and 4 year-olds accessing funding	79
Number of day nurseries	0
Number of pre-schools	1
Number of school nurseries	1
Number of primary schools	1
Number of childminders	3
Quality of provision – day nurseries	No day nurseries
Quality of provision – pre-schools	100% waiting inspection
Quality of provision – primary schools	100% good or better
Quality of provision – childminders	67% good or better 33% effective
<b>**Total number of children likely to take up places</b>	<b>87</b>
Do we have sufficient childcare places in this ward?	Yes
Is there a need to create places?	No – small deficit, but neighbouring wards have a large surplus

## East Tilbury

Data item	Numbers
Number of 2 year-olds in the ward	116
Number of 3 year-olds in the ward	106
Number of 4 year-olds in the ward	115
Estimate 10% of 4 year-olds will require childcare as they are accessing education in school reception classes	12
<b>Total of both age groups who may require childcare</b>	<b>234</b>
<b>Ofsted registered places excluding school reception classes</b>	<b>160</b>
**Ofsted registered school reception places	120
Total Ofsted registered places	280
Number of families eligible for 2 year-old entitlement	26
Number of accessing 2 year-old funding	28
Number of 3 year-olds and 4 year-olds accessing funding	108
Number of day nurseries	1
Number of pre-schools	0
Number of school nurseries	0
Number of primary schools	1
Number of childminders	6
Quality of provision – day nurseries	100% good or better
Quality of provision – pre-schools	No pre-schools
Quality of provision – primary schools	100% good or better
Quality of provision – childminders	34% good or better 50% waiting inspection 16% not met with actions
<b>**Total number of children likely to take up places</b>	<b>187</b>
Vacancies	Full day care setting has vacancies
Do we have sufficient childcare places in this ward?	Yes
Is there a need to create places?	No – small deficit, but neighbouring wards have a large surplus

## Grays Riverside

Data item	Numbers
Number of 2 year-olds in the ward	294
Number of 3 year-olds in the ward	287
Number of 4 year-olds in the ward	287
10% of 4 year-olds requiring childcare	29
<b>Total of both age groups who may require childcare</b>	<b>610</b>
<b>Ofsted registered places excluding school reception classes</b>	<b>266</b>
**Ofsted registered school reception places	90
Total Ofsted registered places	356
Number of families eligible for 2 year-old entitlement	89
Number of accessing 2 year-old funding	61
Number of 3 year-olds and 4 year-olds accessing funding	235
Number of day nurseries	3
Number of pre-schools	1
Number of school nurseries	1
Number of primary schools	1
Number of childminders	1
Quality of provision – day nurseries	34% good or better 33% requires improvement 33% waiting inspection
Quality of provision – pre-schools	100% waiting inspection
Quality of provision – primary schools	100% Good or better
Quality of provision – childminders	100% Good or better
<b>**Total number of children likely to take up places</b>	<b>488</b>
Vacancies	Full day nursery has 30 spaces we expect this number to be reduced by Spring term
Do we have sufficient childcare places in this ward?	No
Is there a need to create places?	Yes – a large deficit of places in this ward and neighbouring wards

## Grays Thurrock

Data item	Numbers
Number of 2 year-olds in the ward	125
Number of 3 in the ward	128
Number of 4 year-olds in the ward	135
Estimate 10% of 4 year-olds will require childcare as they are accessing education in school reception classes	14
<b>Total of age groups who may require childcare</b>	<b>267</b>
<b>Ofsted registered places excluding school reception classes</b>	<b>274</b>
** Ofsted registered school reception places	270
Total Ofsted registered places	544
Number of families eligible for 2 year-old entitlement	32
Number of accessing 2 year-old funding	27
Number of 3 year-olds and 4 year-olds accessing funding	170
Number of day nurseries	2
Number of pre-schools	1
Number of school nurseries	2
Number of primary schools	3
Number of childminders	9
Quality of provision – day nurseries	100% good and better
Quality of provision – pre-schools	100% awaiting inspection
Quality of provision – primary schools	80% good or better 20% awaiting inspection
Quality of provision – childminders	56% good or better 11% met 11% requires improvement 11% ineffective 11% awaiting inspection
<b>**Total number of children likely to take up places</b>	<b>213</b>
Vacancies	A small number of vacancies
Do we have sufficient childcare places in this ward?	Yes
Is there a need to create places?	No

## Little Thurrock Blackshots

Data item	Numbers
Number of 2 year-olds in the ward	95
Number of 3 year-olds in the ward	100
Number of 4 year-olds in the ward	89
Estimate 10% of 4 year-olds will require childcare as they are accessing education in school reception classes	9
<b>Total of age groups who may require childcare</b>	<b>204</b>
<b>Ofsted registered places excluding school reception classes</b>	<b>111</b>
**Ofsted registered school reception places	150
Total Ofsted registered places	261
Number of families eligible for 2 year-old entitlement	25
Number of accessing 2 year-old funding	18
Number of 3 year-olds and 4 year-olds accessing funding	82
Number of day nurseries	0
Number of pre-schools	1
Number of school nurseries	1
Number of primary schools	2
Number of special schools	2 – Treetops Academy and Treetops 2. These provisions provide nursery and reception places according to need and are not included in the above primary school places.
Number of childminders	8
Quality of provision – day nurseries	No day nurseries
Quality of provision – pre-schools	100% good or better
Quality of provision – primary schools	83% good or better 17% awaiting inspection
Quality of provision – childminders	75% good or better 12.5% awaiting inspection 12.5% met
**Total number of children likely to take up places	164
Do we have sufficient childcare places in this ward?	No
Is there a need to create places?	Small requirement as surplus in neighbouring wards



## Little Thurrock Rectory

Data item	Numbers
Number of 2 year-olds in the ward	88
Number of 3 year-olds in the ward	91
Number of 4 year-olds in the ward	74
Estimate 10% of 4 year-olds will require childcare as they are accessing education in school reception classes	7
<b>Total of age groups who may require childcare</b>	<b>186</b>
<b>Ofsted registered places excluding school reception classes</b>	<b>147</b>
**Ofsted registered school reception places	90
Total Ofsted registered places	237
Number of families eligible for 2 year-old entitlement	9
Number of accessing 2 year-old funding	7
Number of 3 year-olds and 4 year-olds accessing funding	86
Number of day nurseries	1
Number of pre-schools	0
Number of school nurseries	1
Number of primary schools	1
Number of childminders	5
Quality of provision – day nurseries	100% good or better
Quality of provision – pre-schools	No pre-schools
Quality of provision – primary schools	100% awaiting inspection
Quality of provision – childminders	80% good or better 20% awaiting inspection
<b>**Total number of children likely to take up places</b>	<b>148</b>
Vacancies	A number of vacancies in full day care
Do we have sufficient childcare places in this ward?	Yes
Is there a need to create places?	No

## Ockendon

Data item	Numbers
Number of 2 year-olds in the ward	193
Number of 3 year-olds in the ward	182
Number of 4 year-olds in the ward	184
Estimate 10% of 4 year-olds will require childcare as they are accessing education in school reception classes	18
<b>Total of age groups who may require childcare</b>	<b>393</b>
<b>Ofsted registered places excluding school reception classes</b>	<b>235</b>
**Ofsted registered school reception places	120 – plus special needs places
Total Ofsted registered places	355
Number of families eligible for 2 year-old entitlement	50
Number of accessing 2 year-old funding	43
Number of 3 year-olds and 4 year-olds accessing funding	165
Number of day nurseries	2
Number of pre-schools	1
Number of school nurseries	2
Number of primary schools	2
Number of special schools	1 – Beacon Hill Academy, which provides nursery and reception places according to need. Its places are not included in the primary school place figures above.
Number of childminders	7
Quality of provision – day nurseries	100% good or better
Quality of provision – pre-schools	100% good or better
Quality of provision – primary schools	100% good or better
Quality of provision – childminders	77% good or better 14% awaiting inspection 9% effective
<b>**Total number of children likely to take up places</b>	<b>314</b>
Do we have sufficient childcare places in this ward?	No
Is there a need to create places?	Yes, high need – shortage of places in neighbouring boroughs

## Orsett

Data item	Numbers
Number of 2 year-olds in the ward	66
Number of 3 year-olds in the ward	56
Number of 4 year-olds in the ward	58
Estimate 10% of 4 year-olds will require childcare as they are accessing education in school reception classes	6
<b>Total of age groups who may require childcare</b>	<b>128</b>
<b>Ofsted registered places excluding school reception classes</b>	<b>85</b>
**Ofsted registered school reception places	72
Total Ofsted registered places	157
Number of families eligible for 2 year-old entitlement	8
Number of accessing 2 year-old funding	6
Number of 3 year-olds and 4 year-olds accessing funding	50
Number of day nurseries	0
Number of pre-schools	1
Number of school nurseries	1
Number of primary schools	3
Number of childminders	3
Quality of provision – day nurseries	No day nurseries
Quality of provision – pre-schools	100% good or better
Quality of provision – primary schools	34% good or better 33% new 33% requires improvement
Quality of provision – childminders	75% good or better 25% met
<b>**Total number of children likely to take up places</b>	<b>102</b>
Vacancies	A small number of vacancies in this ward
Do we have sufficient childcare places in this ward?	No
Is there a need to create places?	Small need to create places – large surplus in neighbouring boroughs

## South Chafford

Data item	Numbers
Number of 2 year-olds in the ward	115
Number of 3 year-olds in the ward	122
Number of 4 year-olds in the ward	120
Estimate 10% of 4 year-olds will require childcare as they are accessing education in school reception classes	12
<b>Total of both age groups who may require childcare</b>	<b>249</b>
<b>Ofsted registered places excluding school reception classes</b>	<b>302</b>
Ofsted registered school reception places	300
Total Ofsted registered places	602
Number of families eligible for 2 year-old entitlement	16
Number of accessing 2 year-old funding	16
Number of 3 year-olds and 4 year-olds accessing funding	231
Number of day nurseries	2
Number of pre-schools	0
Number of school nurseries	3 plus one school also offers a specialist provision alongside their nursery.
Number of primary schools	3
Number of childminders	11
Quality of provision – day nurseries	100% good or better
Quality of provision – pre-schools	No pre-schools
Quality of provision – primary schools	100% good or better
Quality of provision – childminders	82% good or better 18% met
<b>**Total number of children likely to take up places</b>	<b>199</b>
Do we have sufficient childcare places in this ward?	Yes
Is there a need to create places?	No – large surplus

## Stanford East and Corringham Town

Data item	Numbers
Number of 2 year-olds in the ward	111
Number of 3 year-olds in the ward	107
Number of 4 year-olds in the ward	109
Estimate 10% of 4 year-olds will require childcare as they are accessing education in school reception classes	11
<b>Total of age groups who may require childcare</b>	<b>229</b>
<b>Ofsted registered places excluding school reception classes</b>	<b>286</b>
**Ofsted registered school reception places	240
Total Ofsted registered places	526
Number of families eligible for 2 year-old entitlement	28
Number of accessing 2 year-old funding	26
Number of 3 year-olds and 4 year-olds accessing funding	228
Number of day nurseries	0
Number of pre-schools	3
Number of school nurseries	2
Number of primary schools	4
Number of childminders	7
Quality of provision – day nurseries	No day nurseries
Quality of provision – pre-schools	100% good or better
Quality of provision – primary schools	100% good or better
Quality of provision – childminders	86% good or better 14% awaiting inspection
<b>**Total number of children likely to take up places</b>	<b>183</b>
Vacancies	Small number of vacancies
Do we have sufficient childcare places in this ward?	Yes
Is there a need to create places?	No

## Stanford-le-Hope West

Data item	Numbers
Number of 2 year-olds in the ward	119
Number of 3 year-olds in the ward	127
Number of 4 year-olds in the ward	106
Estimate 10% of 4 year-olds will require childcare as they are accessing education in school reception classes	11
<b>Total age groups who may require childcare</b>	<b>257</b>
<b>Ofsted registered places excluding school reception classes</b>	<b>309</b>
**Ofsted registered school reception places	90
Total Ofsted registered places	399
Number of families eligible for 2 year-old entitlement	26
Number of accessing 2 year-old funding	18
Number of 3 year-olds and 4 year-olds accessing funding	174
Number of day nurseries	5
Number of pre-schools	1
Number of school nurseries	2 – one nursery is a specialist SEND unit.
Number of primary schools	2
Number of childminders	3
Quality of provision – day nurseries	80% good or better 20% awaiting inspection
Quality of provision – pre-schools	100% awaiting inspection
Quality of provision – primary schools	100% good or better
Quality of provision – childminders	67% good or better 33% met
<b>**Total number of children likely to take up places</b>	<b>206</b>
Vacancies	Small number of vacancies
Do we have sufficient childcare places in this ward?	Yes
Is there a need to create places?	No

## Stifford Clays

Data item	Numbers
Number of 2 year-olds in the ward	62
Number of 3 years olds in the ward	73
Number of 4 year-olds in the ward	96
Estimate 10% of 4 year-olds will require childcare as they are accessing education in school reception classes	10
<b>Total of age groups who may require childcare</b>	<b>145</b>
<b>Ofsted registered places excluding school reception classes</b>	<b>104</b>
**Ofsted registered school reception places	90
Total Ofsted registered places	194
Number of families eligible for 2 year-old entitlement	14
Number of accessing 2 year-old funding	11
Number of 3 year-olds and 4 year-olds accessing funding	115
Number of day nurseries	0
Number of pre-schools	1
Number of school nurseries	1
Number of primary schools	1
Number of childminders	5
Quality of provision – day nurseries	No day nurseries
Quality of provision – pre-schools	100% good or better
Quality of provision – primary schools	100% good or better
Quality of provision – childminders	60% good or better 15% awaiting inspection 25% effective
<b>**Total number of children likely to take up places</b>	<b>116</b>
Do we have sufficient childcare places in this ward?	Yes
Is there a need to create places?	No

## The Homesteads

Data item	Numbers
Number of 2 year-olds in the ward	66
Number of 3 year-olds in the ward	91
Number of 4 year-olds in the ward	88
Estimate 10% of 4 year-olds will require childcare as they are accessing education in school reception classes	9
<b>Total of age groups who may require childcare</b>	<b>166</b>
<b>Ofsted registered places excluding school reception classes</b>	<b>27</b>
**Ofsted registered school reception places	No reception places
Total Ofsted registered places	27
Number of families eligible for 2 year-old entitlement	9
Number of accessing 2 year-old funding	7
Number of 3 year-olds and 4 year-olds accessing funding	14
Number of day nurseries	0
Number of pre-schools	0
Number of school nurseries	0
Number of primary schools	0
Number of childminders	4
Quality of provision – day nurseries	No day nurseries
Quality of provision – pre-schools	No pre-schools
Quality of provision – primary schools	No primary schools
Quality of provision – childminders	100% good or better
<b>**Total number of children likely to take up places</b>	<b>133</b>
Do we have sufficient childcare places in this ward?	No
Is there a need to create places?	Yes – A small need. This ward has limited childcare places with only childminders offering childcare provision although there are vacancies in the neighbouring wards.



## Tilbury Riverside and Thurrock Park

Data item	Numbers
Number of 2 year-olds in the ward	141
Number of 3 year-olds in the ward	145
Number of 4 year-olds in the ward	174
Estimate 10% of 4 year-olds will require childcare as they are accessing education in school reception classes	17
<b>Total of age groups who may require childcare</b>	<b>303</b>
<b>Ofsted registered places excluding school reception classes</b>	<b>161</b>
**Ofsted registered school reception places	120
**Total Ofsted registered places	281
Number of families eligible for 2 year-old entitlement	66
Number of accessing 2 year-old funding	45
Number of 3 year-olds and 4 year-olds accessing funding	146
Number of day nurseries	2
Number of pre-schools	0
Number of specialist provision	1 – Sunshine Centre. This provision can take up to 52 early years children for selected sessions. Its places are not included in the figures above. This setting is rated Met, due to no children being on site during the inspection.
Number of school nurseries	2
Number of primary schools	2
Number of childminders	4
Quality of provision – day nurseries	100% good
Quality of provision – pre-schools	No pre schools
Quality of provision – primary schools	50% good or better 50% awaiting inspection
Quality of provision – childminders	25% good or better 25% awaiting inspection 50% met
Quality of provision – break out special needs centre (Sunshine Centre)	100% met
<b>**Total number of children likely to take up places</b>	<b>242</b>

Data item	Numbers
Vacancies	Several vacancies reported by the two full day care providers, but we expect these to be filled by Spring term
Do we have sufficient childcare places in this ward?	No
Is there a need to create places?	Yes – high need to create places

## Tilbury St Chads

Data item	Numbers
Number of 2 year-olds in the ward	115
Number of 3 year-olds in the ward	121
Number of 4 year-olds in the ward	126
Estimate 10% of 4 year-olds will require childcare as they are accessing education in school reception classes	13
<b>Total of age groups who may require childcare</b>	<b>249</b>
<b>Ofsted registered places excluding school reception classes</b>	<b>127</b>
**Ofsted registered school reception places	120
Total Ofsted registered places	247
Number of families eligible for 2 year-old entitlement	40
Number of accessing 2 year-old funding	23
Number of 3 year-olds and 4 year-olds accessing funding	86
Number of day nurseries	1
Number of pre-schools	0
Number of school nurseries	2
Number of primary schools	2
Number of childminders	2
Quality of provision – day nurseries	100% inadequate
Quality of provision – pre-schools	No pre-schools
Quality of provision – primary schools	100% good or better
Quality of provision – childminders	100% met
<b>**Total number of children likely to take up places</b>	<b>199</b>
Vacancies	Very limited vacancies reported in this ward
Do we have sufficient childcare places in this ward?	No
Is there a need to create places?	Yes – high need to create places

## West Thurrock and South Stifford

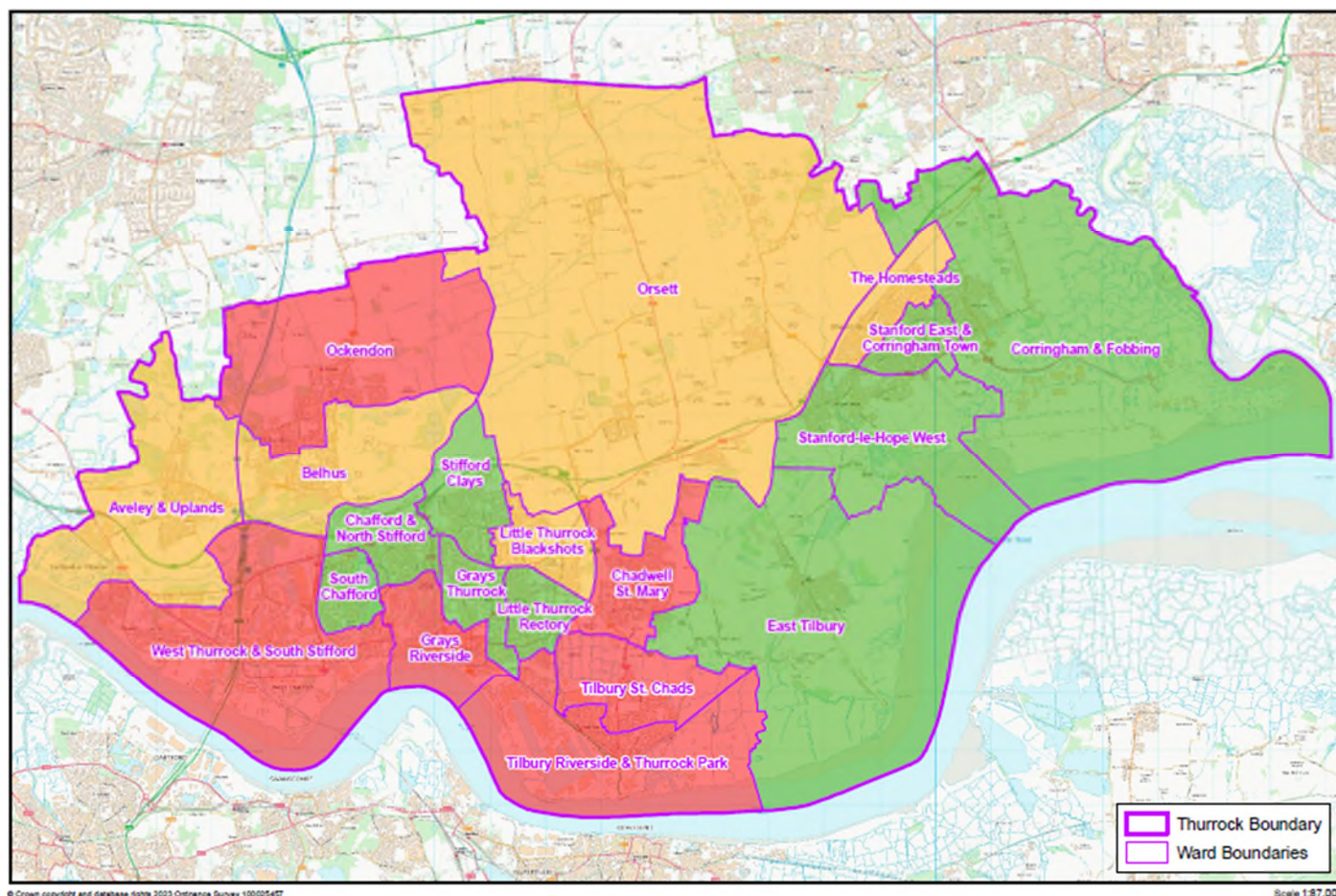
Data item	Numbers
Number of 2 year-olds in the ward	262
Number of 3 year-olds in the ward	278
Number of 4 year-olds in the ward	298
Estimate 10% of 4 year-olds will require childcare as they are accessing education in school reception classes	30
<b>Total of age groups who may require childcare</b>	<b>570</b>
<b>Ofsted registered places excluding school reception classes</b>	<b>366</b>
**Ofsted registered school reception places	150
Total Ofsted registered places	516
Number of families eligible for 2 year-old entitlement	61
Number of accessing 2 year-old funding	44
Number of 3 year-olds and 4 year-olds accessing funding	253
Number of day nurseries	4
Number of pre-schools	0
Number of school nurseries	2
Number of primary schools	2
Number of childminders	13
Quality of provision – day nurseries	75% good or better 25% requires improvement
Quality of provision – pre-schools	No pre-schools
Quality of provision – primary schools	100% good or better
Quality of provision – childminders	38% good or better 38% met 15% waiting inspection 9% effective
<b>**Total number of children likely to take up places</b>	<b>456</b>
Vacancies	89 vacancies reported
Do we have sufficient childcare places in this ward?	No
Is there a need to create places?	Yes, although high number of vacancies reported these will reduce in spring term

The data above is correct as of August 2023.

Some 4 years-olds will be accessing reception class provision in schools.

Parents may choose to take up their funding entitlement at settings outside of their ward or out of borough.

## Heat map by ward



## Quality of childcare in our area

### Ofsted inspection grades

Type of provision	% achieving good or outstanding and awaiting inspection August 2023 *Childminders figures include met and effective	Total number of providers 2023
Childminders on EY Register	59% + 35% awaiting inspection, met or effective	124
School nursery classes excludes 2 specialist provision in schools *	84% + 16% awaiting inspection	29
Private and voluntary nurseries	77% + 13% awaiting inspection	47

For more information, go to [reports.ofsted.gov.uk/about-our-inspection-reports](https://reports.ofsted.gov.uk/about-our-inspection-reports)

# Parents views of sufficiency in our local area

## Parent survey

An online parent survey took place in April 2023. Parents were asked a variety of questions on how easy it is to access suitable childcare and the affordable ability of childcare.

The number of parents who responded to the survey was low despite the survey being advertised on all Thurrock Council channels. We received a total of 141 replies. The results of the survey have been analysed below:

Of the parents who responded:

- 65% of parents find childcare information from family and friends – the remaining 35% use providers' social media, council social media and the Family Information Service for information
- 73% of parents use childcare to access work
- 49% of parents find it easy to access suitable childcare, whereas 51% find suitable childcare difficult to access – these parents mainly live in wards with a shortage of places – and 64% of parents with SEND children stated they could not access suitable care, with a percentage of these children living in wards with a deficit of all childcare places
- 79% of parents who access free childcare but have to pay additional child fees reported these fees were unaffordable
- parents who have to pay full childcare fees find these very expensive
- over 80% of the parents who replied to the survey feel the childcare offered is of good quality and meets the children's needs
- 37% of school-age children's parents use friends and families for childcare due to the high cost
- 75% of parents who responded were aware of access to free childcare but only 32% were aware of the government's childcare choices website, [www.childcarechoices.gov.uk](http://www.childcarechoices.gov.uk)

## Family Information Service (FIS) enquiry data

FIS:

- continues to develop and update Thurrock's Local Offer Website
- encourages providers to advertise their childcare services on the Ask Thurrock website and to regularly review and update their information – [www.askthurrock.org.uk](http://www.askthurrock.org.uk)
- continues to encourage providers to add their vacancies to the Childcare Vacancy page – this is a free option for providers to advertise and supports our recruitment and retention strategy

## Economic regeneration and new housing

Economic regeneration and new housing developments will increase the demand for childcare. The new entitlement explained in the Childcare Reforms section of the report will further increase demand for childcare.

It is imperative that new housing developments are considered when planning any new early education and childcare places.

The table below gives details of ongoing and potential developments of more than 20 units per development by ward.

The Childcare Sufficiency Officer is consulted on all developments to ensure childcare is considered at the planning application stage.

The figures below include developments which have started but still have yield as well as developments that have not received planning permission and the possible yield if the developments go ahead. The nursery figures are calculated at 20% of the primary yield.

Thurrock Development Plan sets out our policies and proposals for future development and land use in Thurrock. It is used to decide planning applications. For further details Thurrock's development plan | Development plans explained | Thurrock Council

Ward	Granted planning permission Possible yield 2023 to 2030 Primary	Granted planning permission Possible yield 2023 to 2030 Nursery	Awaiting planning permission Possible yield 2023 to 2030 Primary	Awaiting planning permission Possible yield 2023 to 2030 Nursery
Aveley and Uplands	0	0	3	0.6
Belhus	0	0	50	4.17
Chadwell St Mary	54	10.8	4	0.8
Chafford and North Stifford	0	0	13	2.6
Corringham and Fobbing	68	13.6	108	21.6
East Tilbury	5	1	631	126.2
Grays Riverside	0	0	37	7.4
Grays Thurrock	54	10.8	148	29.6
Little Thurrock Blackshots	0	0	0	0
Little Thurrock Rectory	21	4.2	21	4.2
Ockendon	16	3.2	2	0.4
Orsett	24	4.8	312	62.4
South Chafford	0	0	195	97.5
Stanford East and Corringham Town	9	1.8	307	61.4
Stanford le Hope West	26	5.2	15	3
Stifford Clays	0	0	0	0
The Homesteads	0	0	0	0
Tilbury Riverside and Thurrock Park	2	0.4	0	0
Tilbury St Chads	21	4.2	16	3.2
West Thurrock and South Stifford	78	15.6	1	0.2

Data correct as of 9 August 2023.

# Childcare reforms

## Background

Childcare plays a vital role in enabling parents to work and support children's early development. Affordable childcare improves economic growth by increasing parents' access to paid work, including lone parents and secondary earners.

Flexible childcare also improves progression and hours worked, expanding the jobs that parents can access. This is particularly important for mothers, whose employment rates and pay are disproportionately impacted by parenthood.

High quality childcare significantly improves outcomes reducing disparities in later life.

In the Spring Budget 2023, the Chancellor set out large-scale childcare reforms to increase availability, reduce costs and increase the number of parents using childcare. **This represents the single biggest investment in early education and childcare in England ever.**

## Existing childcare offer

Currently, all parents are entitled to 15 hours per week childcare support for 3–4 year-olds. Parents who earn the equivalent of at least 16 hours a week at national minimum/living wage and earn less than £100,000 adjusted net income per year, are entitled to 30 hours childcare support a week for children aged 3 and 4.

Parents of 2 year-olds who receive some specific forms of support are also entitled to 15 hours per week childcare support.

## Spring Budget 2023 – transforming childcare

The changes will be introduced in phases.

### September 2023:

- childminder grants to become available – £1,200 for those who register with a childminder agency and £600 for those who register with Ofsted
- staff child 2 year-olds ratio change from 1:4 to 1:5 for 2 year-olds in England

### April 2024:

- 15 hours for eligible working 2 year-olds introduced

### September 2024:

- national wraparound support begins
- 15 hours eligible working parents of children 9 months plus

### September 2025:

- 30 hours for eligible working parents of children from 9 months to primary aged introduced

### September 2026:



- all schools able to offer 8am to 6pm wraparound on their own or in partnership

The funding paid to childcare providers (including nurseries and childminders) for the existing offers will also be increased by £204million from this September, rising to £288million next year. Funding rates per child paid **from September will increase** from an **average of £5.29 to £5.62 for 3 year-olds and 4 year-olds**, and from an **average of £6.00 to £7.95 for 2 year-olds**.

Local authorities will receive their share of £289 million in funding to increase the supply of wraparound, so that parents of primary school age children can access provision from 8am and 6pm – tackling the barriers to working caused by limited availability of wraparound childcare. This does not include holiday care.

By 2027-28, the Government will expect to be spending in excess of £8bn every year on funded hours and early education:

- this includes over £4.1billion to fund extended funded hours for children over the age of 9 months, a funding rate increase, increasing the supply of wraparound childcare, and wider market reforms
- the Office for Budget Responsibility estimates that **60,000 more parents will enter the workforce as a result**, while many will increase their hours

## Universal Credit

As part of the government's expansion to childcare provision, low-income families will be able to access increased childcare support worth a total of £900 million from 28 June 2023.

The Department for Work and Pensions has raised the amount that parents in can claim back monthly for their childcare costs on Universal Credit up to £951 for one child and £1,630 for two or more children. This is a rise of 47% from the previous limits of £646 for one child or £1,108 for two or more children.

The Government will also help eligible parents cover the costs for the first month's childcare when they enter work or significantly increase their hours, removing one of the most significant barriers to parents working. Those parents will also receive up to 85% of their childcare costs back before their next month's bills are due – meaning they should have enough money to pay one month in advance going forward.

For Thurrock Council to meet the increase demand for childcare places, it will require working collaboratively across council departments. A new Strategic Board has been set up with colleagues from various departments including Planning and Asset Management, Performance, Quality and Business Intelligence (data team), IT, Communications, Finance, Services to Schools and the Early Years Team. The group will meet monthly to plan and support providers to implement the new entitlements.

This data below has been supplied by the Department for Education (DfE) for the Autumn term. Ward boundaries may differ from the boundaries as we know them. This is an early estimate of supply and demand – we are expecting further data information from the DfE in due course. If you require updated data, please contact [expansions@thurrock.gov.uk](mailto:expansions@thurrock.gov.uk)

## Current demand May 2023

Ward name	GP-registered 0 to 4 year-olds	Estimated children using childcare
Corringham and Fobbing	299	162
Stanford East and Corringham Town	786	427
Orsett	332	170
Stanford-le-Hope West	642	337
Ockendon	940	510
Belhus	707	382
Aveley and Uplands	679	376
Stifford Clays	504	277
Little Thurrock Blackshots	443	241
Chadwell St Mary	743	418
East Tilbury	574	311
Little Thurrock Rectory	464	253
West Thurrock and South Stifford	1231	648
Grays Riverside	1564	814
Tilbury St Chads	1218	661
South Chafford	571	313
Chafford and North Stifford	526	282

## April 2024 – new entitlement phase 1

In April 2024 the new entitlement will be made available to 2 year olds.

The table below is a projection of the number of users of the new entitlement, but the new demand for childcare places depends on the proportion of current formal childcare users who are eligible to transfer to the new entitlement. This proportion is uncertain, but the figures here are based on national estimates of demand.

Ward name	Estimated number of 0 to 2 year-olds	Projected users of new entitlement	Estimated new demand
Corringham and Fobbing	58	21	5
Stanford East and Corringham Town	144	59	15
Orsett	70	25	6
Stanford-le-Hope West	130	51	13
Ockendon	176	65	16

Ward name	Estimated number of 0 to 2 year-olds	Projected users of new entitlement	Estimated new demand
Belhus	136	51	13
Aveley and Uplands	121	47	12
Stifford Clays	90	31	8
Little Thurrock Blackshots	83	31	8
Chadwell St Mary	125	50	13
East Tilbury	109	36	9
Little Thurrock Rectory	86	37	9
West Thurrock and South Stifford	240	80	20
Grays Riverside	316	102	26
Tilbury St Chads	228	59	15
South Chafford	103	32	8
Chafford and North Stifford	100	30	7

## September 2024 – new entitlement phase 2

In September 2024 the new entitlement will be made available for ages from 9 to 36 months. The DfE methodology distributes the national estimate of numbers of children using the entitlement in each ward by a joint equal weighting between the estimated 9 month-old to 36 month-old population in each area according to GP registration data and the current level of usage of the 30 hours for 3 year-old and 4 year-old entitlement, which has the same eligibility criteria.

Ward name	Estimated number of 0 to 2 year-olds	Projected users of new entitlement	Estimated new demand
Corringham and Fobbing	140	41	14
Stanford East and Corringham Town	332	112	36
Orsett	151	48	16
Stanford Le Hope West	315	101	33
Ockendon	408	124	41
Belhus	310	97	32
Aveley and Uplands	259	86	29
Stifford Clays	217	61	20
Little Thurrock Blackshots	201	61	20
Chadwell St Mary	266	93	31
East Tilbury	264	71	24
Little Thurrock Rectory	210	73	24

Ward name	Estimated number of 0 to 2 year-olds	Projected users of new entitlement	Estimated new demand
West Thurrock and South Stifford	539	151	50
Grays Riverside	714	193	64
Tilbury St Chads	548	116	38
South Chafford	254	64	21
Chafford and North Stifford	231	57	19

## Early years childcare supply

The DfE data presented in this section provides the supply of childcare places in Thurrock. These figures are drawn from Ofsted Official Stats as at 31 August 2022 and information from the school census.

Ward name	Childcare places on non-domestic premises	School places	Childminder places
Corringham and Fobbing	24	0	12
Stanford East and Corringham Town	130	123	91
Orsett	26	38	41
Stanford-le-Hope West	155	43	9
Ockendon	109	61	48
Belhus	141	156	36
Aveley and Uplands	156	49	36
Stifford Clays	56	55	36
Little Thurrock Blackshots	24	34	59
Chadwell St Mary	175	16	40
East Tilbury	120	0	39
Little Thurrock Rectory	168	45	60
West Thurrock and South Stifford	204	71	95
Grays Riverside	279	196	54
Tilbury St Chads	155	119	31
South Chafford	198	123	65
Chafford and North Stifford	210	47	70

## Early years childcare places needed

This table includes data from the above tables and a calculation of places needed more than current supply. This is calculated by taking estimated demand for places and subtracting the total supply of places, in the relevant ward (if the number is negative, that suggests excess supply in that specific area).

Ward name	Demand April 2024	Demand Sept 2024	Supply	Need April 2024	Need Sept 2024
Corringham and Fobbing	167	176	36	131	140
Stanford East and Corringham Town	442	463	353	89	110
Orsett	176	186	105	71	81
Stanford-le-Hope West	350	370	207	143	163
Ockendon	526	551	218	308	333
Belhus	395	414	333	62	81
Aveley and Uplands	388	405	241	147	164
Stifford Clays	285	297	147	138	150
Little Thurrock Blackshots	249	261	117	132	144
Chadwell St Mary	431	449	231	200	218
East Tilbury	320	335	159	161	176
Little Thurrock Rectory	262	277	273	-11	4
West Thurrock and South Stifford	668	698	370	298	328
Grays Riverside	840	878	529	311	349
Tilbury St Chads	676	699	699	305	371
South Chafford	321	334	334	386	-65
Chafford and North Stifford	289	301	301	333	-44

## Wraparound childcare: supply of on-school site childcare

The table below reports information about on-site wraparound childcare provided at schools with primary-aged pupils situated within Thurrock. This may be provided by the school or by a PVI childcare provider.

This summary is based on returns from schools in the January 2022 School Census – the most recent available data – which have not been directly verified. It does not report on wraparound provision that may be supplied off-school sites. It also does not report whether capacity is exceeded by demand at schools or not.

School total type	Definition	Total
Schools with primary-aged pupils	Schools with primary aged pupils refers to all primary schools, middle schools, and all through schools (excluding special schools) in the local authority	<b>39</b>
Schools offering before school childcare	Number of schools with before school childcare on site in the local authority	<b>28</b>
<b>Total number of before school places</b>	<b>Total on site before school childcare places reported by schools in the local authority</b>	<b>1,350</b>
Schools offering after-school childcare	Number of schools with after-school childcare on site in the local authority	<b>19</b>
<b>Total number of after-school places</b>	<b>Total on site after school childcare places reported by schools to the local authority</b>	<b>810</b>
Schools providing before and after school	Number of schools with both before school and after school childcare on site in the local authority	<b>19</b>
Schools providing neither before or after school	Number of schools with no childcare on site either before or after school in the local authority	<b>11</b>
Schools providing full wraparound	Number of schools with both before and after school childcare on site covering both 6am or earlier and 6pm or later in the local authority	<b>13</b>
Schools not providing full wraparound	Number of schools not providing full wraparound in the local authority	<b>26</b>

## Our plans for 2023/2024

The estimated demand from parents to access the new entitlement is going to be challenging to meet. There are many factors to take into consideration to meet our statutory duty to ensure there are enough childcare places of good quality for parents to access locally.

Our local knowledge suggests some providers do not wish to expand or are unable to expand in their existing premises. There are also approximately 20 providers who have shown an interest in expanding their existing provision or setting up a new provision in Thurrock subject to premises being identified.

There is a lack of properties available in Thurrock for providers to either lease or purchase, which again will make expansion challenging for existing settings and for potential new providers.

The sale of assets and the increase in rents for providers operating out of council-owned buildings could make provider's businesses unsustainable.

A major concern for providers is the lack of suitable qualified staff to recruit. Most of our providers report staff vacancies. Recruitment is an issue for both large nursery chains and small independent providers. Please see previous information on page 11 of how the council is supporting providers with recruitment.

For many providers the new funding rates although welcome, will not meet the cost of delivery. This could result in providers deciding not to offer the new entitlement.

The cost of care for children with SEND can be considerably higher due to practical changes that need to be made to the provision, or due to an increase in ratio of staff.

An action plan has been put into place to support providers implement the new entitlements.

The plan will be reviewed and updated monthly.

## **Our key objectives from the plan**

Key objectives from the plan are:

- to analyse locally held data and DfE provided data to map current and estimated new demand including demographic and socio-economic indicators at ward level
- to produce a structured survey of all EY providers including settings, childminders, and schools on their preparation to meet the new entitlement and how viable it is for their business to expand and remain sustainable
- to produce a detailed questionnaire for parents of 0 to 5 year-olds to ascertain their future intentions of the take up of the new entitlement including all areas of the reforms
- specifically looking at parents with children aged up to 24 months, working parents and what factors will ensure they access the new entitlement broken down by ward
- to support providers to understand and access the new entitlements, training provided where necessary
- to support providers with expansion ensuring the places offered are of good quality which parents can access within their local area
- to work collaboratively with our schools with and without nurseries to identify schools who will consider either opening a nursery, increasing their offer to include 2 year-olds or work with independent providers to offer nursery provision on site
- to work collaboratively with schools to ensure all schools offer wraparound care by September 2025. The provision can be provided on site by the school, on site by an independent provider or off site by an independent provider including childminders
- to consider the estimated new demand for childcare places for any new housing development over 20 units
- to provide up to date information on planning and building regulations to assist providers wishing to set up or expand
- to give consideration of our statutory duty to ensure parents can access childcare and early year education locally when receiving planning applications for expanding existing premises or re development of new premises
- to consider the impact the extended offer has for our most disadvantaged 2 year-olds
- to monitor the impact the new offer has on take up and address any adverse reduction in the number of children accessing these placements
- when creating additional placements to meet sufficiency requirements we will ensure that they are local for low-income families who may not have access to transport
- to closely monitor impact that the new extended offer has on the take up of entitlement places and work to address any adverse reduction in the number of children accessing these placements
- to promote through social media and other channels:
  - early years as a career choice – support with recruitment of qualified and non-qualified staff
  - childcare choices – giving parents information on how to access childcare entitlements
  - childminding induction training courses – to support potential new childminders to set up and remain sustainable

- information for parents on changes to the entitlement
- encouragement for parents to take part in the parent survey to map potential increase in demand
- clear and accessible information to support the application process, especially for the most disadvantaged children, if different for entitlement children we will provide

## Methodology

Source materials:

- number of children – based on population projections from [www.ons.gov.uk/peoplepopulationandcommunity/populationandmigration/populationprojections/bulletins/subnationalpopulationprojectionsforengland/2019based](http://www.ons.gov.uk/peoplepopulationandcommunity/populationandmigration/populationprojections/bulletins/subnationalpopulationprojectionsforengland/2019based)
- Figure 6: Population age structure by single year of age and sex for local authorities, counties, regions and England as a whole, mid-2016 to mid-2041
- children with EHC plans – based on data held by Thurrock Council
- supply of childcare – based on data provided to us by Ofsted who regulate early years provision in schools and childcare provision, and Thurrock Council data – in some cases, we have supplemented this with local intelligence where providers are not registered with Ofsted
- Ofsted registered places data – calculated on how many children can attend a setting in anyone time
- childcare for parents working atypical hours – data held by Thurrock Council
- funded early education – data on take-up of funded early education entitlements is based on the Early Years and Schools Censuses, which are taken every January and published by the Department for Education in the statistical collection Education provision: children under five years of aged
- data on entitlement to a funded early education place for 2 year-olds – provided by the Department for Work and Pensions and local authority data
- price of childcare – collected by data provided by early years settings
- quality of childcare – data on childcare quality is provided by Ofsted
- data from parents – data held by Thurrock Council from parent survey





# DEPARTMENT FOR EDUCATION THURROCK HAF REPORT 2022

Easter, Summer, Winter 2022



 [thurrock.gov.uk](http://thurrock.gov.uk)

  
Department  
for Education

  
Essex County Council

 Active Essex

# THURROCK 2022 OVERVIEW



Take a look at our Essex ActivAte 2022 Impact Report [here](#).



## EASTER 2022

**1,088** total unique children

**926** unique primary children

**82** unique secondary children

**80** unique SEND children

**29** total number of clubs

**2** total SEND clubs

**5** total mental wellbeing clubs

**73%** attendance fill



## SUMMER 2022

**1,318** total unique children

**861** unique primary children

**316** unique secondary children

**141** unique SEND children

**23** total number of clubs

**1** total SEND clubs

**3** total mental wellbeing clubs

**93%** attendance fill



## WINTER 2022

**908** total unique children

**717** unique primary children

**124** unique secondary children

**67** unique SEND children

**22** total number of clubs

**2** total SEND clubs

**3** total mental wellbeing clubs

**73%** attendance fill

We supported...

**1,008**



individual children & young people

Approx.

**760**

families

**80%** of attendees were new to the programme this Easter holiday



**9%** 11-16 year olds

**91%** 5-11 year olds



**30%** from low income working families & other eligible groups - funded by ECC

At least **77** youngsters with additional needs

We delivered...

**20** clubs

Including..

- 2** SEND Hubs
- 1** Mental Wellbeing Hubs
- 2** Clubs with provision for 11-16s



**6,820** nutritious, school standard meals

*Every day my child came home happy and said he had a wonderful time! He loved all the activities and he loved the meatballs for lunch.*  
 - a parent from Thurrock

We provided...

**1,000** Activity packs

**1,000** Family packs



**2,000**

Full Time Meals  
 recipe cards

As a result...

**97%** of families rated the activities as good or excellent



Youngsters could take part in 90+ minutes of physical activity each day



**83%** of parents saw a noticeable improvement in their child's mental wellbeing and their own

Prior to attending **74%** were not getting their daily recommended exercise outside of term-time

*My daughters were extremely happy after the club - one said it was the best day of her life! The staff were very polite and helpful, and the sessions kept my girls busy and happy!*  
 - a parent from Thurrock

*My child comes home each day having learnt new physical activities which he's never tried before! It's great to see things he's made or baked, which shows me he's participated and engaged in activities!*  
 - a parent from Thurrock

We worked with...

**12** Locally Trusted Organisations

to deliver **100** types of activity



Families also reported the following benefits...

Socialising with other children



Improved emotional wellbeing



Trying new physical activities



Meeting new positive role models



We delivered...



A total of **12,860** spaces across **23** clubs

Thurrock Summer 2022

**49%** of children returned to an ActivAte club this summer

**74%** of young people were not participating in the recommended 60-minutes of physical activity a day before attending an ActivAte club

**3** Mental Wellbeing hubs

**1** Dedicated SEND club



**1,177** individual children & young people supported

**“**We had wonderful feedback from parents that came for our community day, explaining how they made new friends, how the activities were interactive and how they could have lovely time as a family together!  
- Provider from Thurrock**”**

**“**My children absolutely loved being on stage, dancing and singing! The ladies running the club made it so much fun and was great with the children!  
- A parent from Thurrock**”**

**1 in 3** young children tried new food groups

**55%** of parents were extremely satisfied with the food provided for their child

**87%** 5 - 11 year olds

**13%** 12 -16 year olds

...As a result

**51%** of young people were new to ActivAte this summer

**66%** of parents said their child benefited from socialising with other children at a club

**11,992** nutritious, hot meals served over an average of 20 days

**1,000** family packs were distributed to help families stay active and receive support

**10** Ukrainian refugees

**58%** of young children who responded to the survey said the clubs helped with their mental health & well-being

**40%** of children benefited from taking part in physical activity

# Thurrock Winter 2022



thurrock.gov.uk

## We delivered and supported...

22



clubs over an average of 4 days delivering a range of physical activity, enrichment sessions and food education to eligible children and young people across Thurrock



2,274

spaces were on offer to eligible children and low income families



85%

of attendances were children on benefit based free school meals



2,007

spaces filled by children and young people this winter

7



family experiences and over 400 spaces helped to ensure all families have valued and memorable experiences with their children

3

hubs to support youngsters mental wellbeing through physical activity and enrichment



2

specialist SEND hubs to ensure children with specific needs receive extra support

“My son loves to attend clubs to integrate with different children as he has a speech disorder which affects his confidence. Getting involved with different activities really helps him outside of his routine!”  
— Parent from Thurrock



“The family provision gave families a chance to spend some quality time together without having to spend any money, and the feedback we have received has been extremely positive!”  
— Partner from Thurrock

## As a result...



847

food hampers were provided to support families struggling with the cost of living increases



1,000

activity packs were created to keep young people and families engaged across the whole holidays



77%

of parents were very satisfied with the hot meal provided for their child/ren

“The club was exceptional and my children enjoyed all the activities provided, they always look forward to the next day, especially seeing their new friends!”  
— Parent from Thurrock



80%

of parents said attending an ActivAte club supported their child's mental wellbeing, as well as their own

80%

of children benefited the most from physical activity at a club as it increased their confidence and self-esteem



87%

of youngsters were not participating in the recommended 60-minutes of physical activity a day before attending an ActivAte club

# FINANCIAL REVIEW

## HOLIDAY CLUB PROVISION

**£572,775.50**

- Provider staff costs
- Venue hire
- Cost of meal for each child
- Average cost for space per primary child £18 - £20
- Average cost for space per secondary child £20 - £22
- Average cost for space per child attending a SEND club £30 - £60
- Average cost for space per child attending a mental wellbeing club £20 - £30
- Different activities for children including Bikeability, RelaxKids, Let's Get Crafty, Travelling Museum, Mental Wellbeing Festivals, Grow Your Own Kits, and Music Workshops
- Main themes for the year included Sun Safety, Reading, Food Education, Cost-Of-Living and Active Travel



## MARKETING AND COMMUNICATIONS

**£4,582**

- 1,000 Childrens Activity Booklets
- 1,000 Family Support and Guidance Booklets
- Promotional banners for each delivery partner to display at local club venues
- Essex ActivAte brand development including website, social media and posters
- Blogs to highlight successes of the programme and personal experiences/stories
- Filming and photography to capture impact of clubs and share to further promote the programme
- Reporting infographics for local authority partners



## CAPITAL EXPENDITURE

**£5,000**

- Providing funding for delivery partners to purchase additional catering, enrichment and sports equipment to further support children at HAF clubs
- Sports equipment including rounders sets, quick cricket, badminton posts, ball games, archery kits and more to support children's physical and mental wellbeing
- Enrichment equipment including paints, slime, playdough, crafts, gardening sets and more to provide children with opportunities to try new and varied activities to develop skills and confidence
- Catering equipment including slow-cookers, blenders, air-fryers, aprons, cooking utensils and reusable tableware to support families during the cost-of-living crises and educate them on how to cook low-cost, quick and easy recipes at home



## MANAGEMENT AND ADMINISTRATION

**£64,115.99**

- Thurrock ActivAte is managed by one full-time member of staff, and four part-time staff members including a HAF coordinator, locality lead, marketing/communications lead and business support
- HAF coordinator - leading the team, Department of Education reporting, partnership development and liaising with local authorities
- Locality lead - Working closely with HAF delivery partners across Thurrock
- Marketing and communications - Promoting Essex ActivAte across all digital and and print platforms, as well as signposting key messages to support local families
- Business support - Financial, administration and HAF partner support



## ADDITIONAL COSTS

**£9,000**

- Assisting children with additional needs or those who live in rural locations by covering costs of transport to access HAF clubs
- Providing training programmes to support HAF partners in the successful delivery of their clubs including Mental Health First Aid, Inclusive Sport, Managing Challenging Behaviour and more
- Invested in a central booking system (WONDE) which included the onboarding of all delivery partners in order to reach all eligible children and validate reporting data



# KEY HIGHLIGHTS OF THURROCK ACTIVATE 2022



During the hottest summer on record...



23

sunscreen boards were provided by Thurrock ActivAte clubs to ensure children were protected against sunburn and educated on sun safety. We were also featured on BBC Essex radio showing how our HAF clubs provide sun safety information!



Watch the Thurrock Easter adventures with ActivAte [here](#).



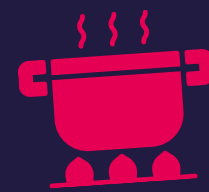
Thurrock ActivAte clubs offer a wide range of outdoor, action-adventure activities to broaden young people's mindset and learn new skills. This further builds their confidence and self-esteem, as well as supporting their physical and mental wellbeing!



Take a look at how local schools support Thurrock ActivAte [here](#).

1,000

Full Time Meal recipe cards for families to help create simple, easy and low-cost meals at home!



We received a video message from Tom Kerridge himself praising the fantastic work and support we provide families and children across Thurrock through the HAF programme!



# KEY HIGHLIGHTS OF THURROCK ACTIVATE 2022



841

winter food hampers given to support families across Thurrock most in need during the cost-of-living crisis



400

additional funded spaces were delivered to families providing memorable Christmas experiences



Watch our Essex ActivAte winter programme 2022 video [here](#).



2 skate jam events



2 cycling workshops

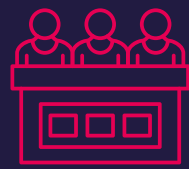


Watch one of our Thurrock skate jam events [here](#).





# KEY ORGANISATIONS THAT SUPPORT THURROCK ACTIVATE



## Thurrock Council

Active Essex and Thurrock Council work closely to deliver an effective HAF programme. Thurrock Council have helped Active Essex to develop strong relationships with other council teams to support local children and families



## Thurrock Libraries

Provided sessions within HAF clubs to promote the Summer Reading Challenge as well as digital materials and signposting to support children's activity booklets



## Thurrock CVS

Offering consistent support and signposting to families across Thurrock



## Child and Family Wellbeing Services

Signposting Thurrock families to HAF clubs



## Essex Police and Fire

Visiting clubs to build positive relationships between local services and children, as well as provided different fun activities



## Team Rubicon and King Ramps

Providing wheel-based events, workshops and displays at HAF clubs using local, green, community spaces



## Supermarkets

Morrisons and Asda provided food vouchers and discounts to HAF delivery partners allowing them to buy additional food for children attending clubs, also a stand at Lakeside Shopping Centre to further promote the programme



## Bikeability

Running bike workshops within HAF clubs teaching children how to ride a bike, as well as bike safety



## Essex County Council

Thurrock Council has worked closely with Essex County Council to support HAF clubs in all areas across Thurrock. This partnership allows the programme to reduce costs by sharing resources such as printing materials and the central booking system



## Essex Sport and Youth Crime Prevention Team

Bringing together the criminal justice and community sport system in HAF clubs, and providing physical activity to prevent young people from engaging in youth crime and violence



## Mental Wellbeing Partners

As part of the HAF mental wellbeing steering group, partners provided shared learning, signposting and activities to support children's mental wellbeing



## Adult Community Learning

Support the training and upskilling of providers and families for personal development



Watch a round up of the Essex ActivAte 2022 programme [here](#). 