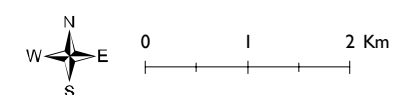
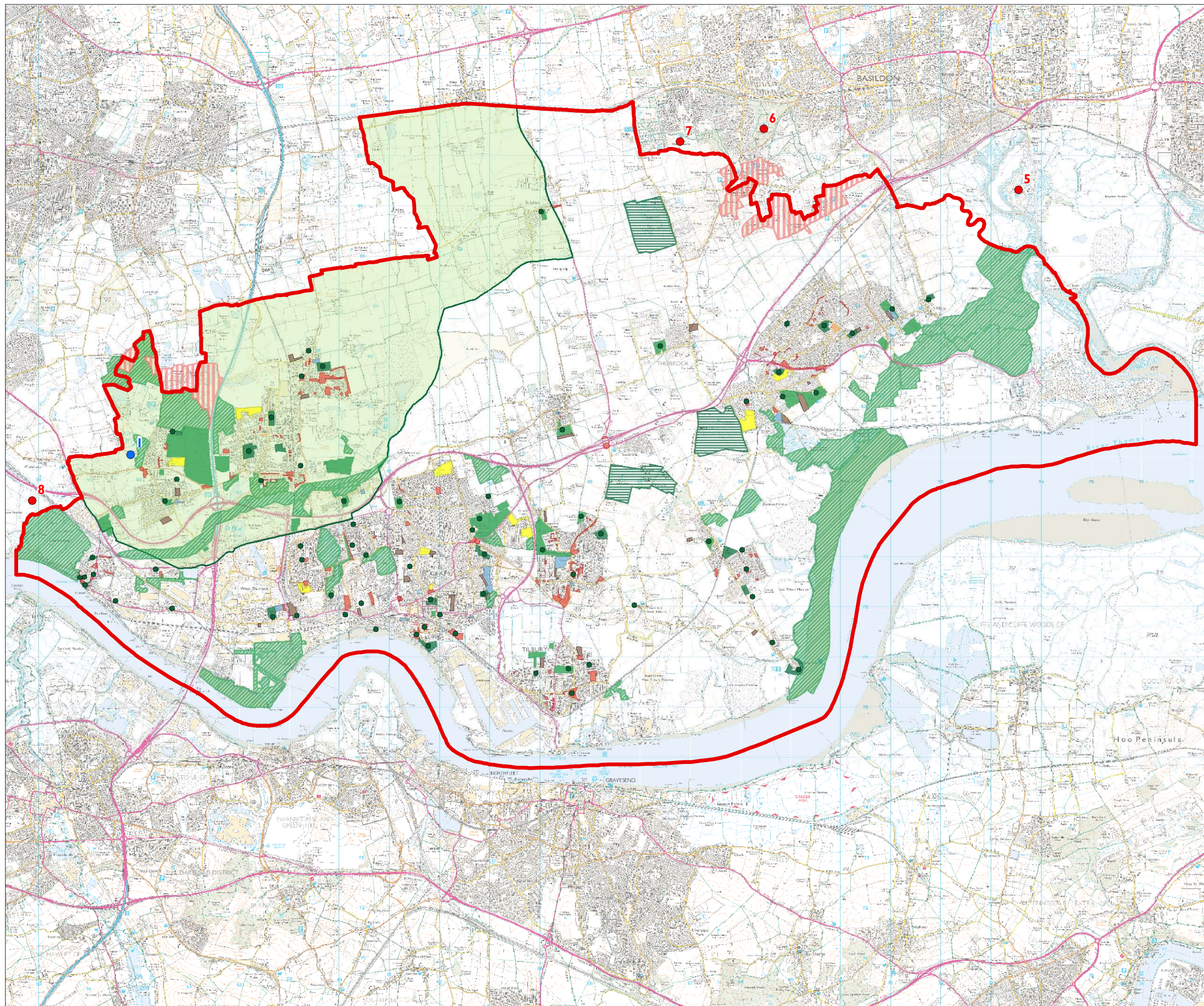


Thurrock Green Infrastructure Framework Plan

Figure 4.1 Open Spaces

Key

- Thurrock boundary
- Parks and gardens
- Country parks
- Golf clubs
- Recreation sports
- Amenity greenspace
- Natural and semi natural greenspace
- Amenity area in shopping or housing
- Schools (with or without Community access)
- Church / Cemetery
- Allotments
- Thames Chase Community Forest
- Childrens play spaces
- Open space not identified in the Thurrock Open Spaces Strategy
- Open Spaces Strategy
- Kennington Park Country Park
- Strategic open space close to Thurrock's boundary
- 5 - Wat Tyler Country Park
- 6 - Langdon Nature Reserve
- 7 - Plotlands Nature Reserve
- 8 - Rainham and Wennington Marshes



Source: Thurrock Council

Date: 31/08/2006

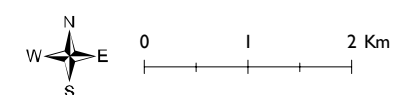
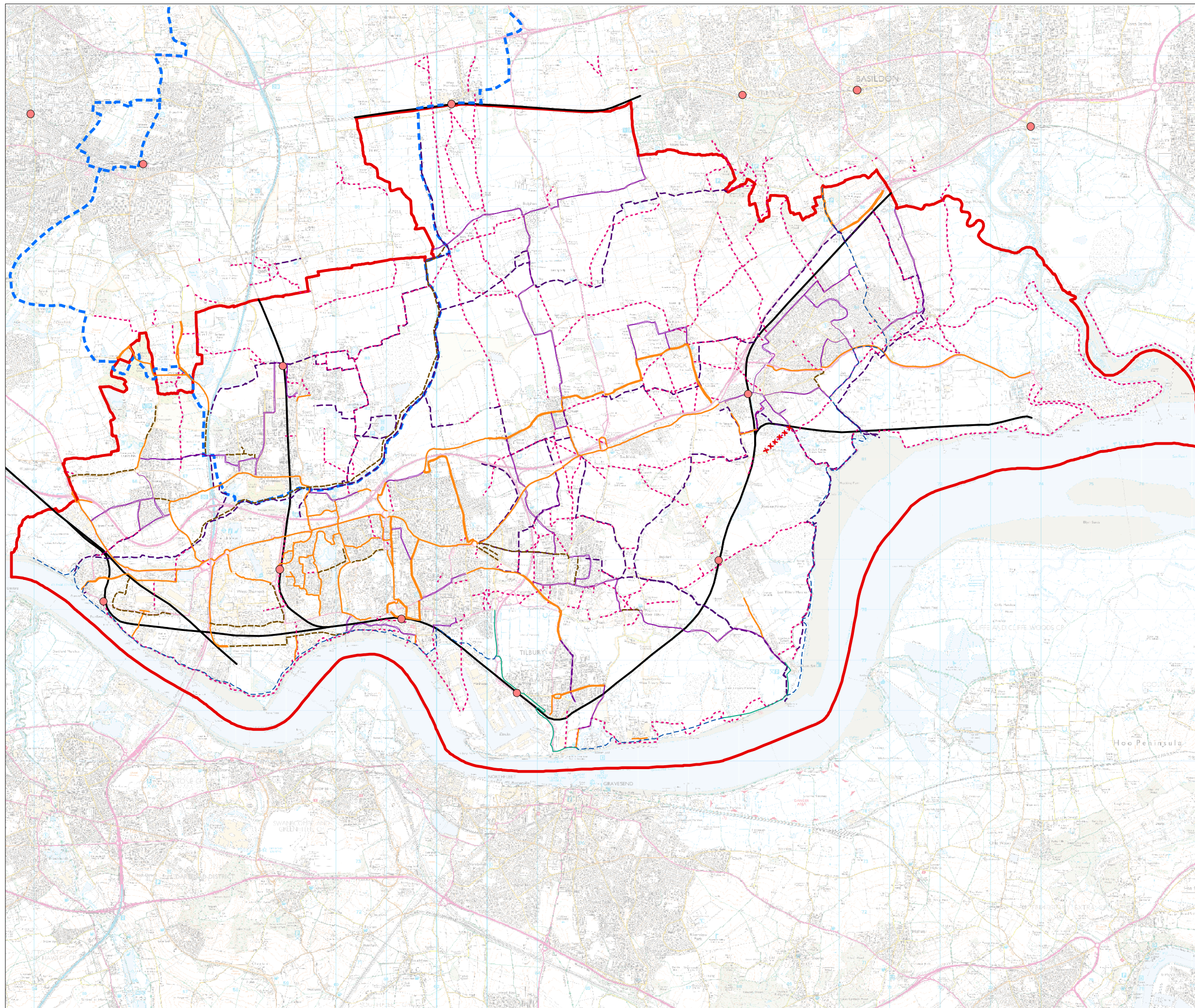


Thurrock Green Infrastructure Framework Plan

Figure 4.2 Public Right of Way and Access

Key

- Thurrock boundary
- Train station
- Rail
- Footpath
- Bridleway
- The Forest Circle
(desired route - subject to change)
- Cycle Routes**
 - Existing Routes
 - Desired Routes
 - Existing National Cycle Network
Route 13 (NCN)
 - Suggested Routes with no Cycle Lanes
 - NCN Proposed Route
 - xxxxx Cyclists Dismount



Source: Thurrock Council
Ordnance Survey
Thames Chase
Date: 31/08/2006



Thurrock Green Infrastructure Framework Plan


Figure 4.3 Landscape Character Areas

Key

 Thurrock boundary

Land Character Type

 A - Fenland Landscape

 B - Rolling Farmland / Wooded Hills Landscape

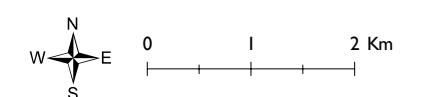
 C - Marsh Landscape

 D - Urban Fringe Landscape

 E - Urban Landscape

Landscape Character Area

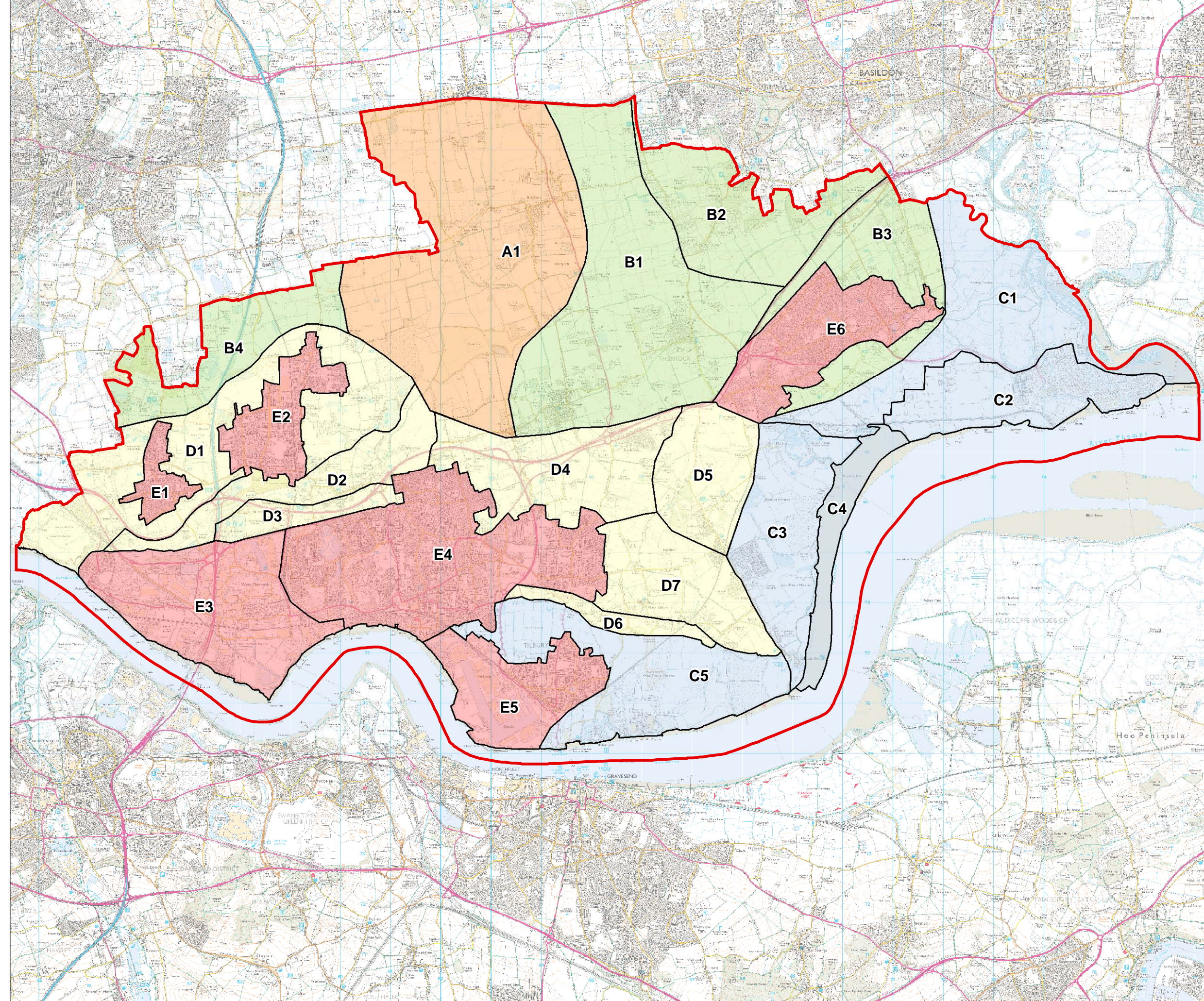
- A1, Bulphan
- B1, Sticking Hill
- B2, Langdon Hills
- B3, Fobbing Ridge
- B4, Bellus
- C1, Fobbing Marshes
- C2, Coryton
- C3, Mucking Marshes
- C4, Mucking Flats
- C5, Tilbury Marshes
- D1, Aveley/South Ockendon
- D2, Mardyke River Valley
- D3, North Stifford Corridor
- D4, White Crofts/West Tilbury
- D5, Linford/Buckingham Hill
- D6, Chadwell Escarpment
- D7, West Tilbury
- E1, Aveley
- E2, South Ockendon
- E3, West Thurrock and Purfleet
- E4, Grays/Chadwell St Mary
- E5, Tilbury and Docks
- E6, Corringham/Standford-le-Hope



DRAFT

Source: Thurrock Council

Date: 31/08/2006

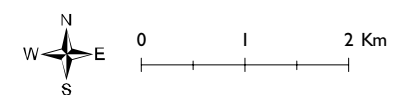


Thurrock Green Infrastructure Framework Plan

Figure 4.4 Biodiversity and Geology

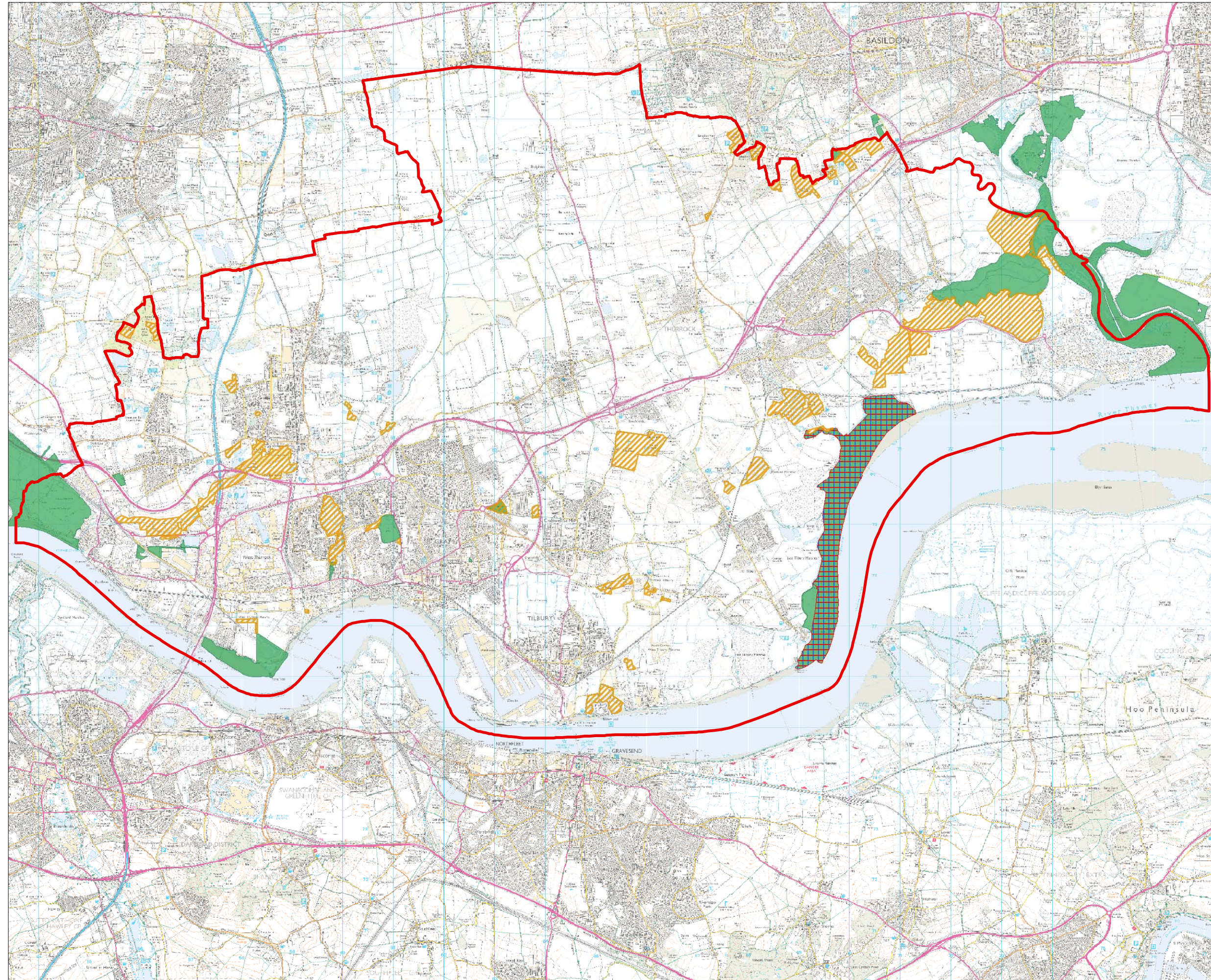
- Key**
- Thurrock boundary
 - SSSI
 - Ramsar
 - SPA
 - County Wildlife Sites

Note: Internationally, European and Nationally important statutory sites are mapped in the Thurrock Biodiversity Study and will be protected and enhanced by the Greengrid consistent with Thurrock Council's duties under S28G of Wildlife and Countryside Act as amended.



Source: Thurrock Council

Date: 11/01/2007



Thurrock Green Infrastructure Framework Plan

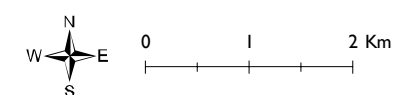
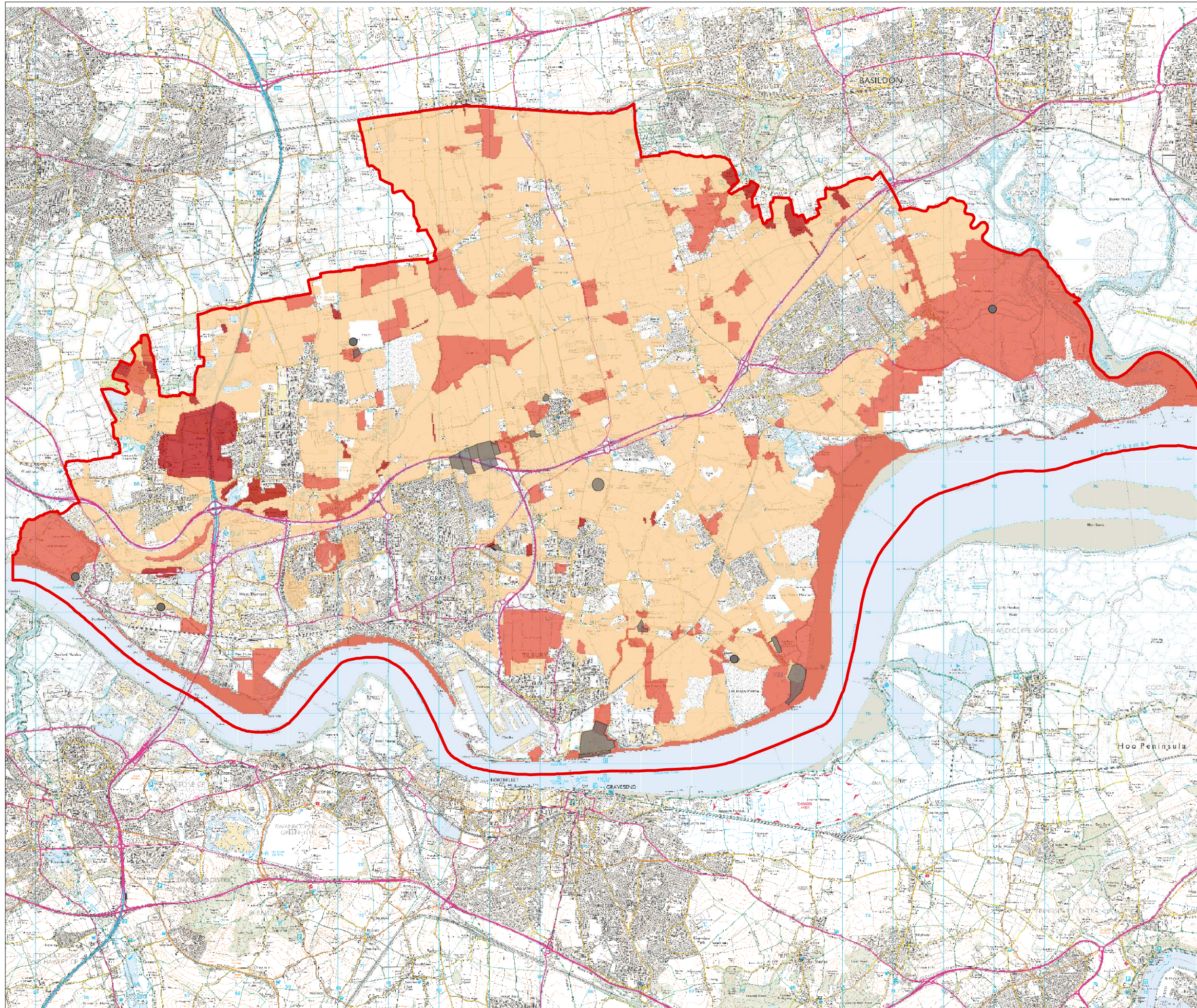
Figure 4.5 Heritage Features

Key

- Thurrock boundary
- Scheduled Ancient Monuments
- Scheduled Ancient Monuments

sensitivity

- No data
- Little Known Sensitivity
- Sensitive
- Moderately Sensitive
- Highly Sensitive
- Extremely sensitive



Source: English Heritage
Essex County Council

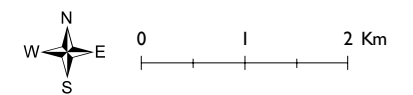
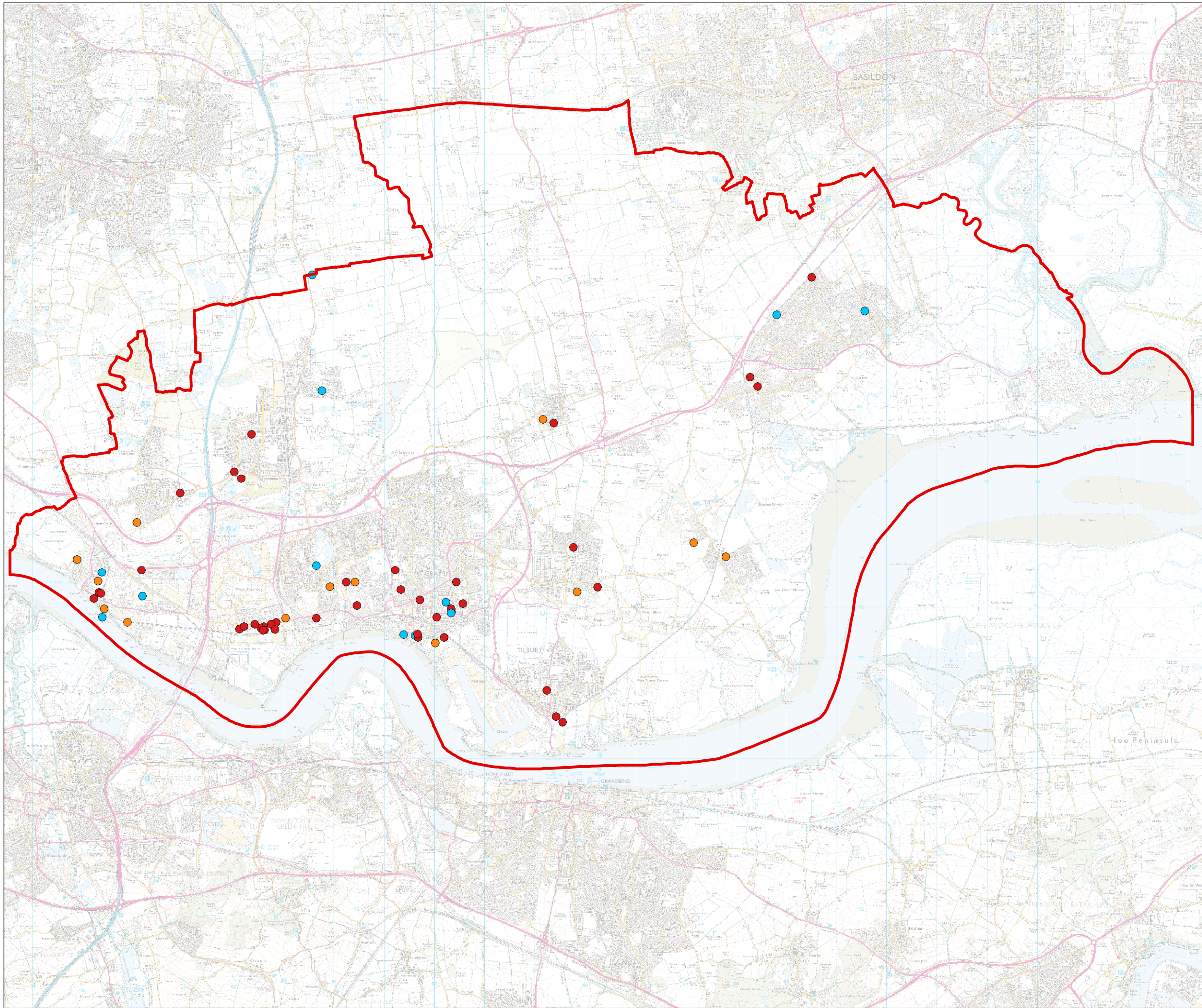
Date: 11/01/2007



Thurrock Green Infrastructure Framework Plan

Figure 4.6 Previously Developed Land

- Key**
- Thurrock boundary
- Previously Developed Land
- A - Previously developed land now vacant
 - C - Derelict land and buildings
 - D - Previously developed land or buildings currently in use and allocated in local plan or with planning permission




DRAFT
Source: Thurrock Council
NLUD

Date: 31/08/2006



Thurrock Green Infrastructure Framework Plan
Figure 4.7 Agricultural Land Classification

Key

 Thurrock boundary

Agricultural Land Class

 Grade 1

 Grade 2

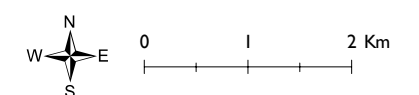
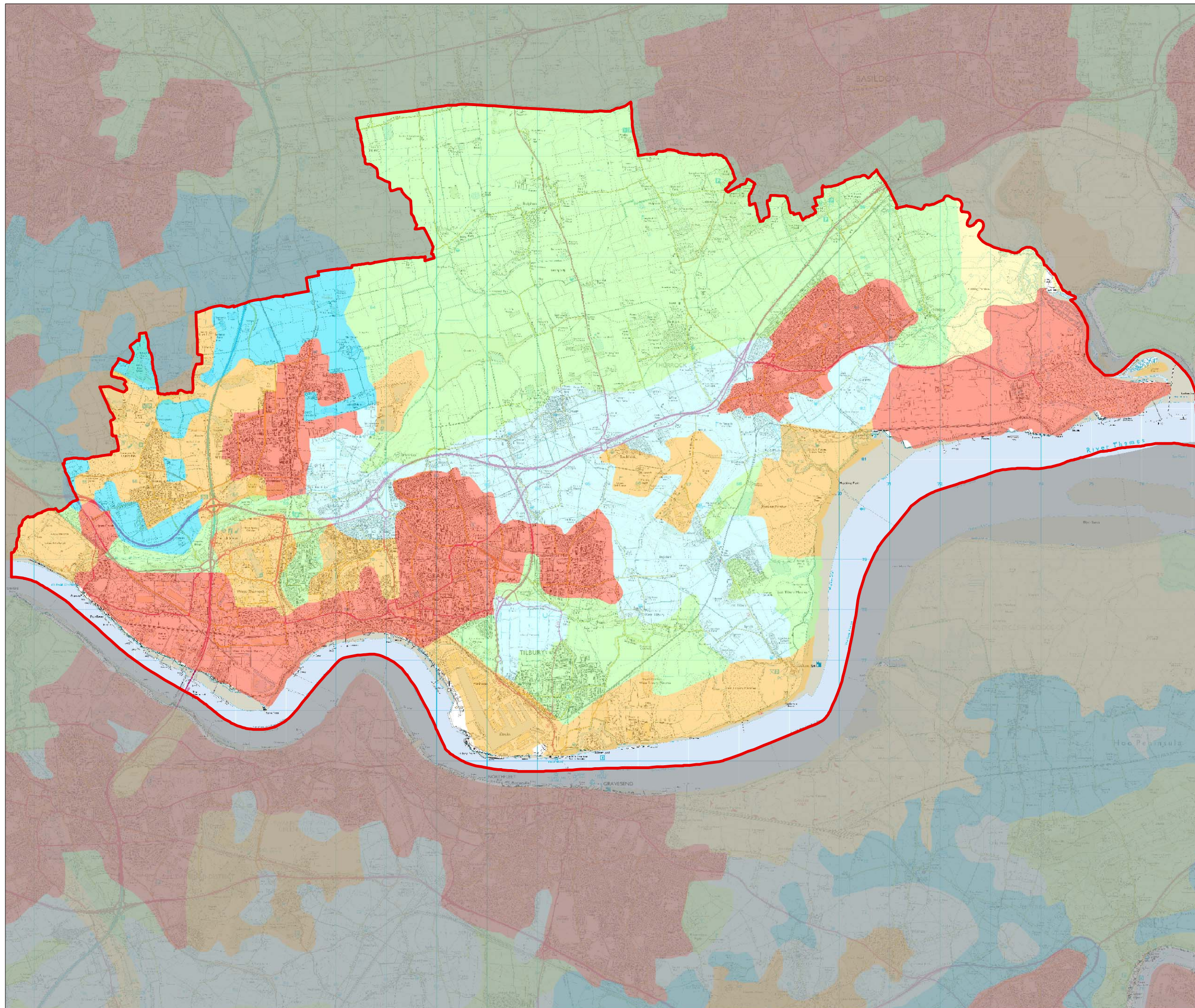
 Grade 3

 Grade 4

 Grade 5

 Non Agricultural

 Urban



DRAFT

Source: DEFRA RDS

Date: 31/08/2006



Thurrock Green Infrastructure Framework Plan
Figure 4.8 Green Infrastructure Plan

Key



Thurrock boundary



Strategic Views



Proposed Strategic Semi-Natural Greenspace:



1 Mardyke Valley



2 Tilbury Marshes



3 East + West Tilbury Marshes



4 Mucking Marshes



5 East Tilbury Marshes



6 Fobbing Marshes



7 Aveley + Ockendon Forest Park



8 West Thurrock Marshes



9 Lion Gorge



10 Orsett Fen



11 Langdon Hills Country Park



12 West of Kennington Park



13 South of Kennington Park



14 Little Belhus



15 Baldwins Farm



16 Land South of North Ockendon



17 Grange Farm



Strategic Sites to Safeguard for Biodiversity and Geology:
A Aveley Marshes



B West Thurrock Marshes



C Chafford Gorge



D Mucking Flats



E Fobbing Marshes + Holehaven Creek



Strategic Multifunctional Green Space : Enhance
1 Belhus Park and Woods Complex



2 Tilbury Fort



3 Coalhouse Fort



4 Blackshots Sports Complex



Create
5 Cory Country Park



6 Bluehouse Country Park



Strategic Heritage Asset:
1 Belhus Park



2 Tilbury Fort



3 Coalhouse Fort



4 Purfleet / High House



5 Davy Down



6 Parsonage Common



7 Walton Common



Potential Heritage Assets:
8 Belhus Park



9 Tilbury Docks



10 Bata Shoe Factory



11 Archaeological Park / Cropmark Network



12 Orsett Fen



Natural Systems Opportunity
13 Sustainable Management for Wood Fuel



14 Potential for Co-firing using Biomass



15 Potential for Biomass Cropping



16 Potential for Community Garden at High House



Flood Management:
17 Potential for Strategic SuDS



18 Potential for Managed Realignment



19 Priority for Flood Management



Strategic Links:
20 Proposed Sustrans Cycle Route**



21 Proposed Strategic Green Links - Rural



22 Proposed Strategic Green Links - Urban



23 Riverways



24 Parkways



Strategic Bridging Points:
25 Proposed Strategic Bridging Points



26 Existing Strategic Bridging Points



Existing Open Space
27 Existing Open Space (Access may be restricted)



28 Thames Chase Community Forest

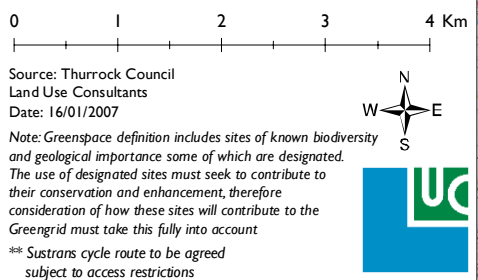
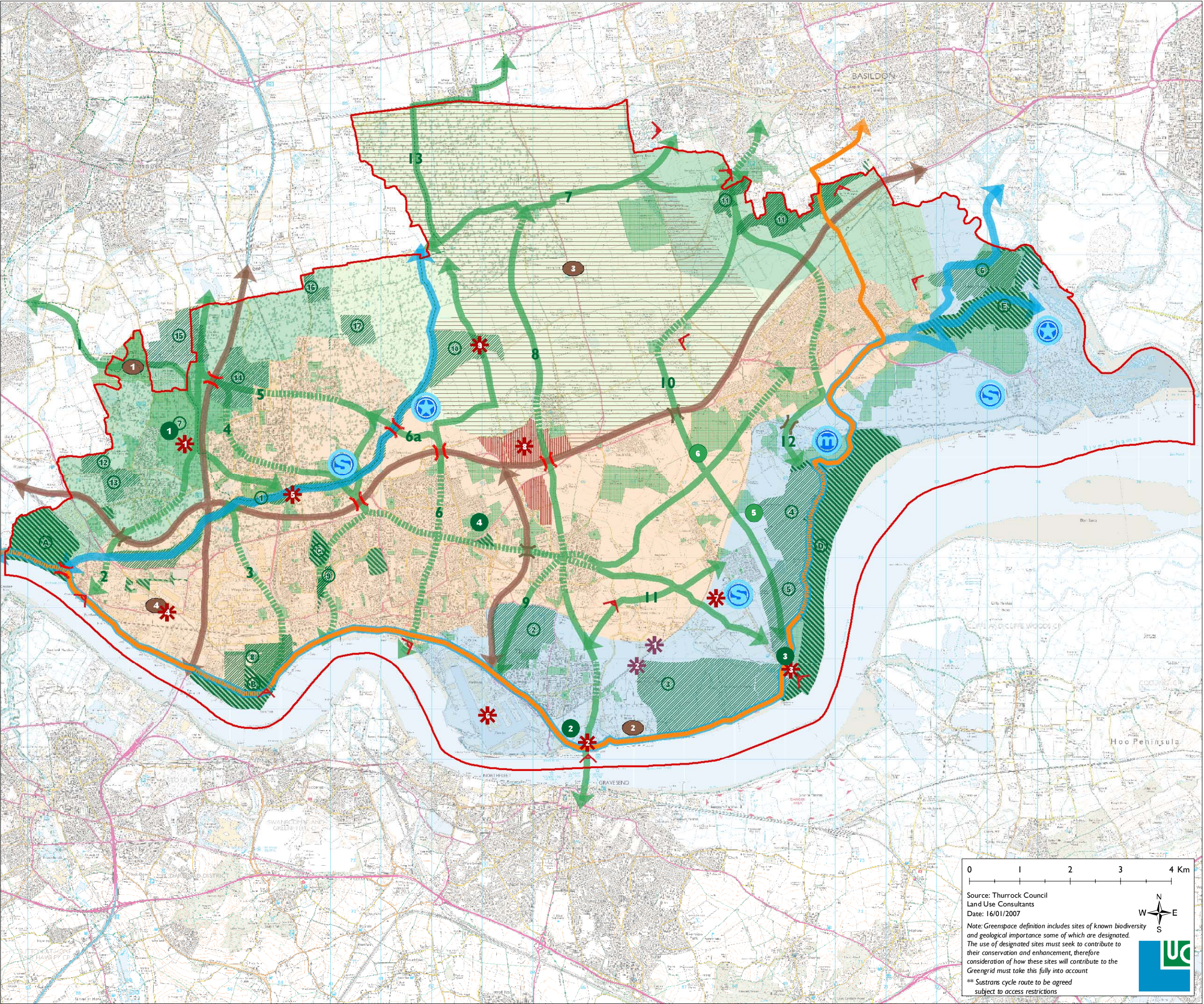


Broad Landscape Management Areas:
29 Create / Restore Landscape Character

30 Marshland Landscape to be Conserved and Enhanced

31 Pastoral Landscape to be Conserved and Enhanced

32 Wooded Landscape Character to be Enhanced




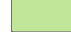


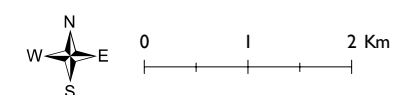
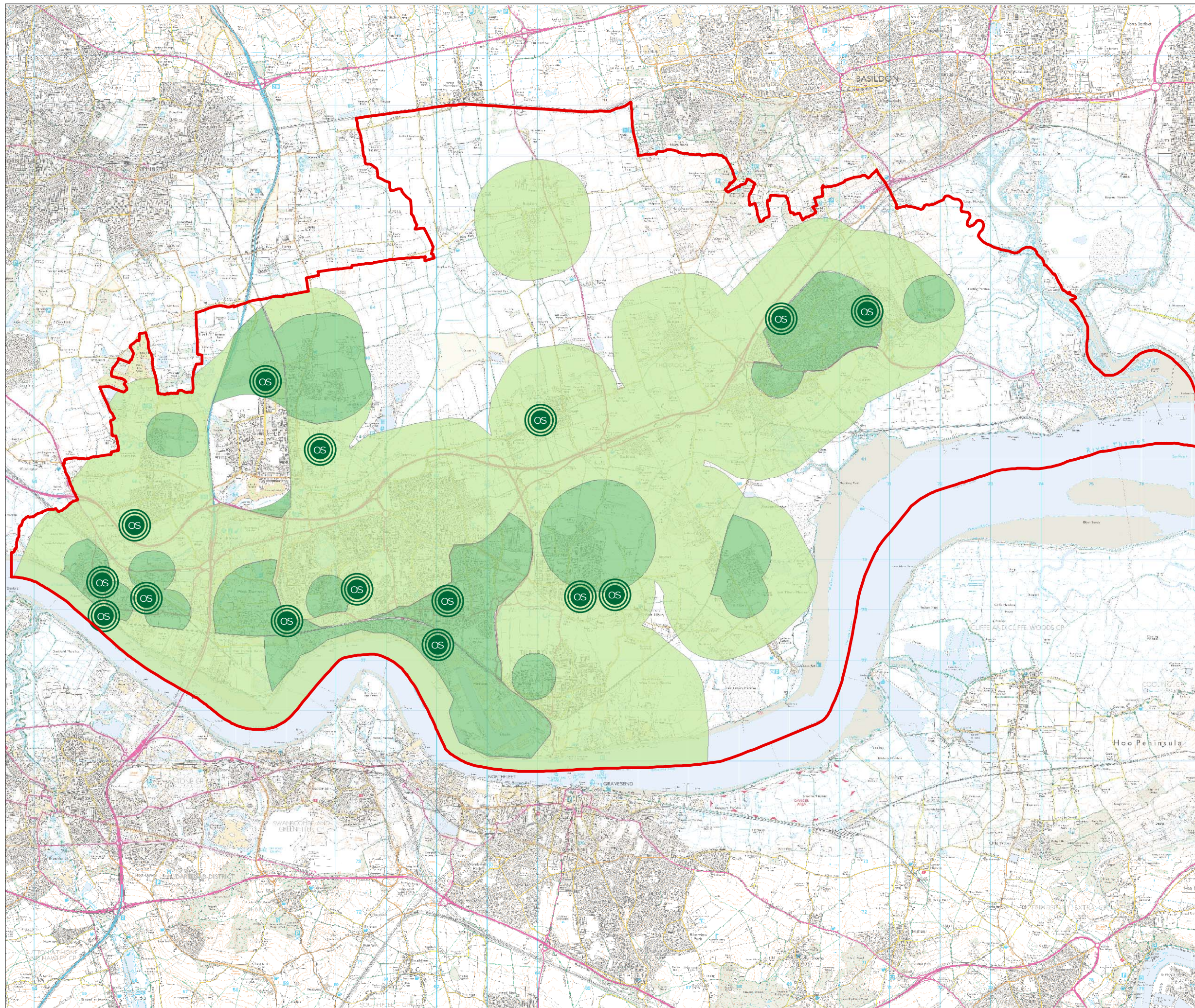
Source: Thurrock Council
Land Use Consultants
Date: 16/01/2007
Note: Greenspace definition includes sites of known biodiversity and geological importance some of which are designated. The use of designated sites must seek to contribute to their conservation and enhancement, therefore consideration of how these sites will contribute to the Greengrid must take this fully into account
** Sustrans cycle route to be agreed subject to access restrictions

Thurrock Green Infrastructure Framework Plan

Figure 4.9 Potential Open Spaces and Open Space Deficiency

Key

-  Thurrock boundary
-  Potential Open Space
-  Areas Deficient in Local Parks
-  Areas Deficient in all Types of Park



DRAFT

Source: Thurrock Council


Date: 31/08/2006

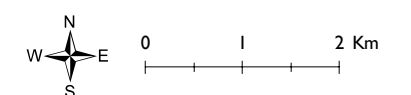
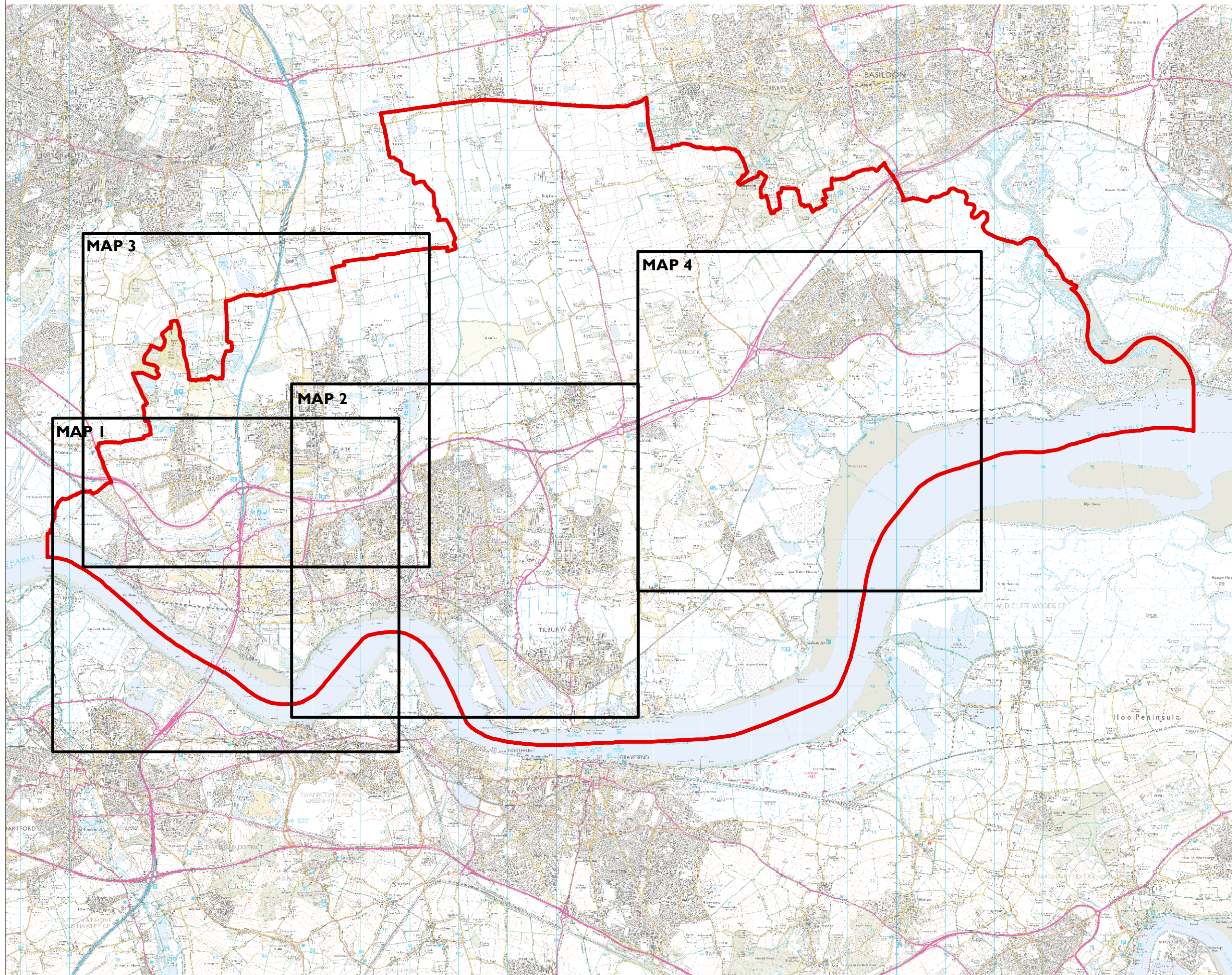


Thurrock Green Infrastructure Framework Plan

Figure 4.10 Focus Areas for Local Opportunities Maps

Key

-  Thurrock boundary
- Map 1 - Purfleet and West Thurrock
- Map 2 - Grays, Chadwell St. Mary and Tilbury
- Map 3 - Aveley and South Ockendon
- Map 4 - East Tilbury, Stanford-le-Hope and Corringham



DRAFT

Source: Thurrock Council

Date: 31/08/2006



Thurrock Green Infrastructure Framework Plan
Figure 4.11 Local Opportunities Map I: Purfleet and West Thurrock

Key

Thurrock boundary

PROWs and Cycle Routes:

Existing Routes

Desired Routes

The Forest Circle

Existing Open Space (Access may be restricted)

Proposals:

Strategic Views:

Kennington Country Park (not identified in the Thurrock Open Spaces Strategy)

Strategic Open Space close to Thurrock's boundary

Previously Developed Land: (NLUD 2004)

Previously developed land (Potential for Green Infrastructure)

Strategic Sites to Safeguard for Biodiversity and geology:

Aveley Marshes

West Thurrock Marshes

Chafford Gorge

Purfleet Road, Aveley

Purfleet Chalk Pits

Lion Pit

Grays Chalk Pit

Proposed Strategic Semi-Natural Greenspace:

Mardyke Valley

West Thurrock Marshes

Lion Gorge

West of Kennington Park

South of Kennington Park

Strategic Multifunctional Green-space Enhance:

Belhus Park

Strategic Heritage Asset:

Belhus Park

Purfleet / High House

Davy Down

Strategic Links:

Proposed Sustrans

Cycle Route

Riverways

Proposed Strategic Green Links: Currently Accessible

Proposed Strategic Green Links: Desired Links

Parkways

Flood Management:

Potential for Strategic SuDS

Strategic Bridging Points:

Proposed Strategic Bridging Points

Existing Strategic Bridging Points

Local Greenspace Opportunities

Potential for Multifunctional Greenspace

Potential Local Green Links: Currently Accessible

Potential Local Green Links

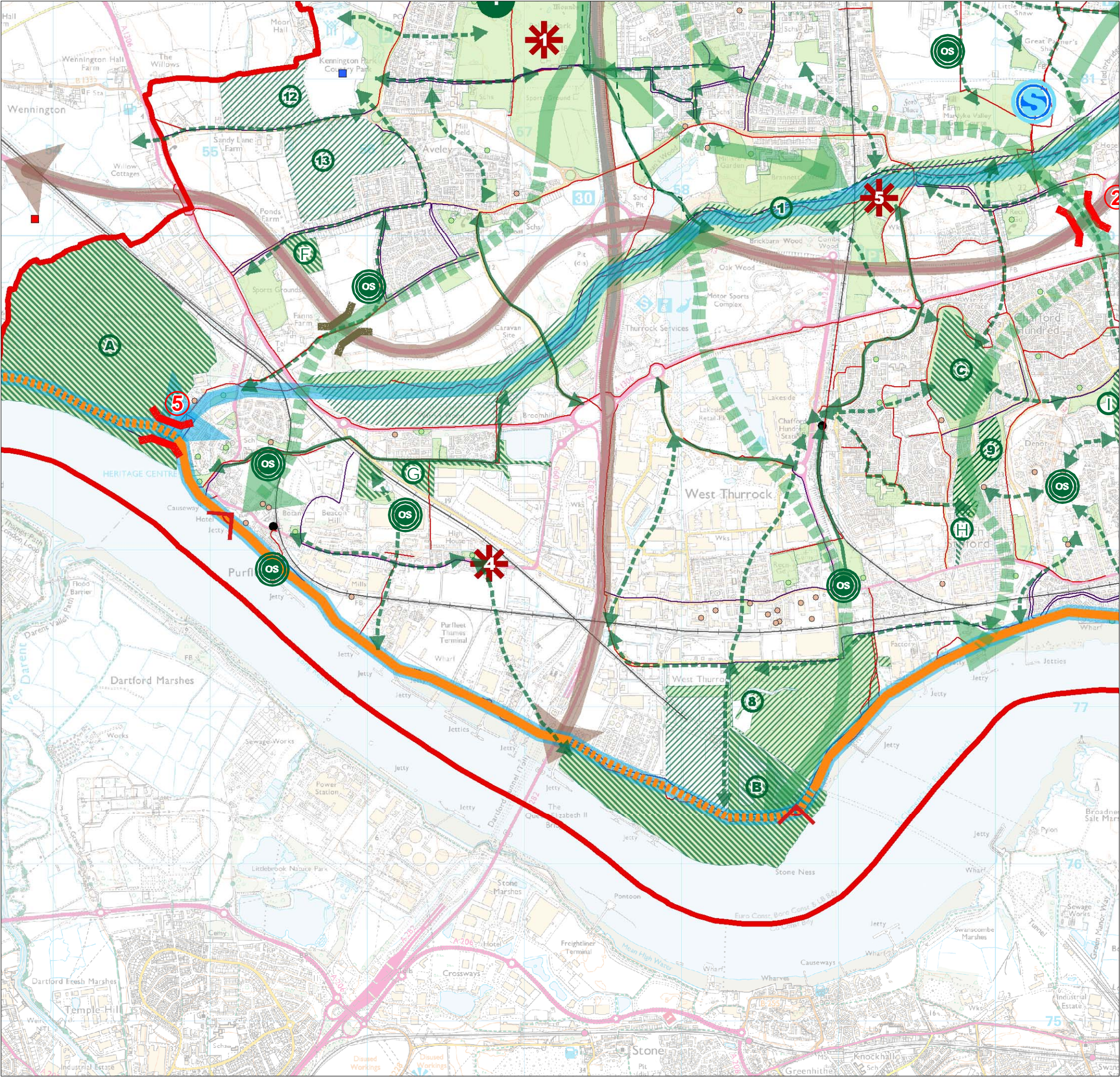
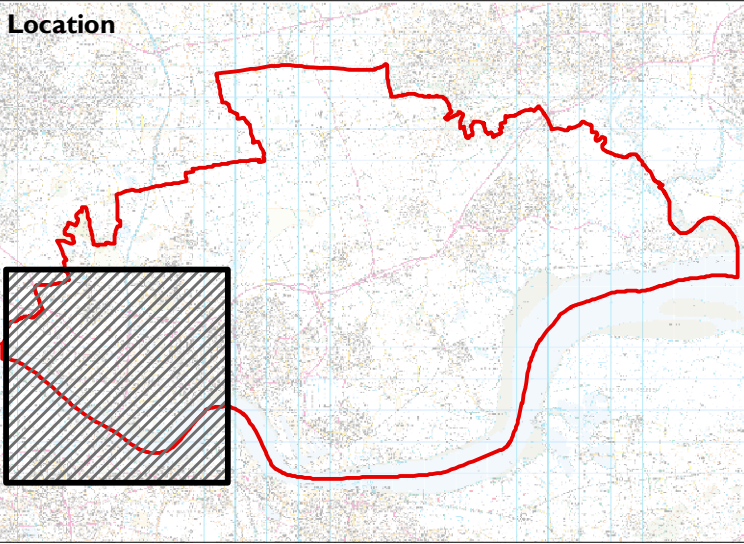
N
W E
S

0 0.5 1 1.5 Km

Scale: 1:25000

Source: Thurrock Council

Date: 04/01/2007



Thurrock Green Infrastructure Framework Plan
Figure 4.11 Local Opportunities Map I: Purfleet and West Thurrock

Key

Thurrock boundary

PROWs and Cycle Routes:

Existing Routes

Desired Routes

The Forest Circle

Existing Open Space (Access may be restricted)

Proposals:

Strategic Views:

Kennington Country Park (not identified in the Thurrock Open Spaces Strategy)

Strategic Open Space close to Thurrock's boundary

Previously Developed Land: (NLUD 2004)

Previously developed land (Potential for Green Infrastructure)

Strategic Sites to Safeguard for Biodiversity and geology:

Aveley Marshes

West Thurrock Marshes

Chafford Gorge

Purfleet Road, Aveley

Purfleet Chalk Pits

Lion Pit

Grays Chalk Pit

Proposed Strategic Semi-Natural Greenspace:

Mardyke Valley

West Thurrock Marshes

Lion Gorge

West of Kennington Park

South of Kennington Park

Strategic Multifunctional Green-space Enhance:

Belhus Park

Strategic Heritage Asset:

Belhus Park

Purfleet / High House

Davy Down

Strategic Links:

Proposed Sustrans Cycle Route

Riverways

Proposed Strategic Green Links: Currently Accessible

Proposed Strategic Green Links: Desired Links

Parkways

Flood Management:

Potential for Strategic SuDS

Strategic Bridging Points:

Proposed Strategic Bridging Points

Existing Strategic Bridging Points

Local Greenspace Opportunities

Potential for Multifunctional Greenspace

Potential Local Green Links: Currently Accessible

Potential Local Green Links

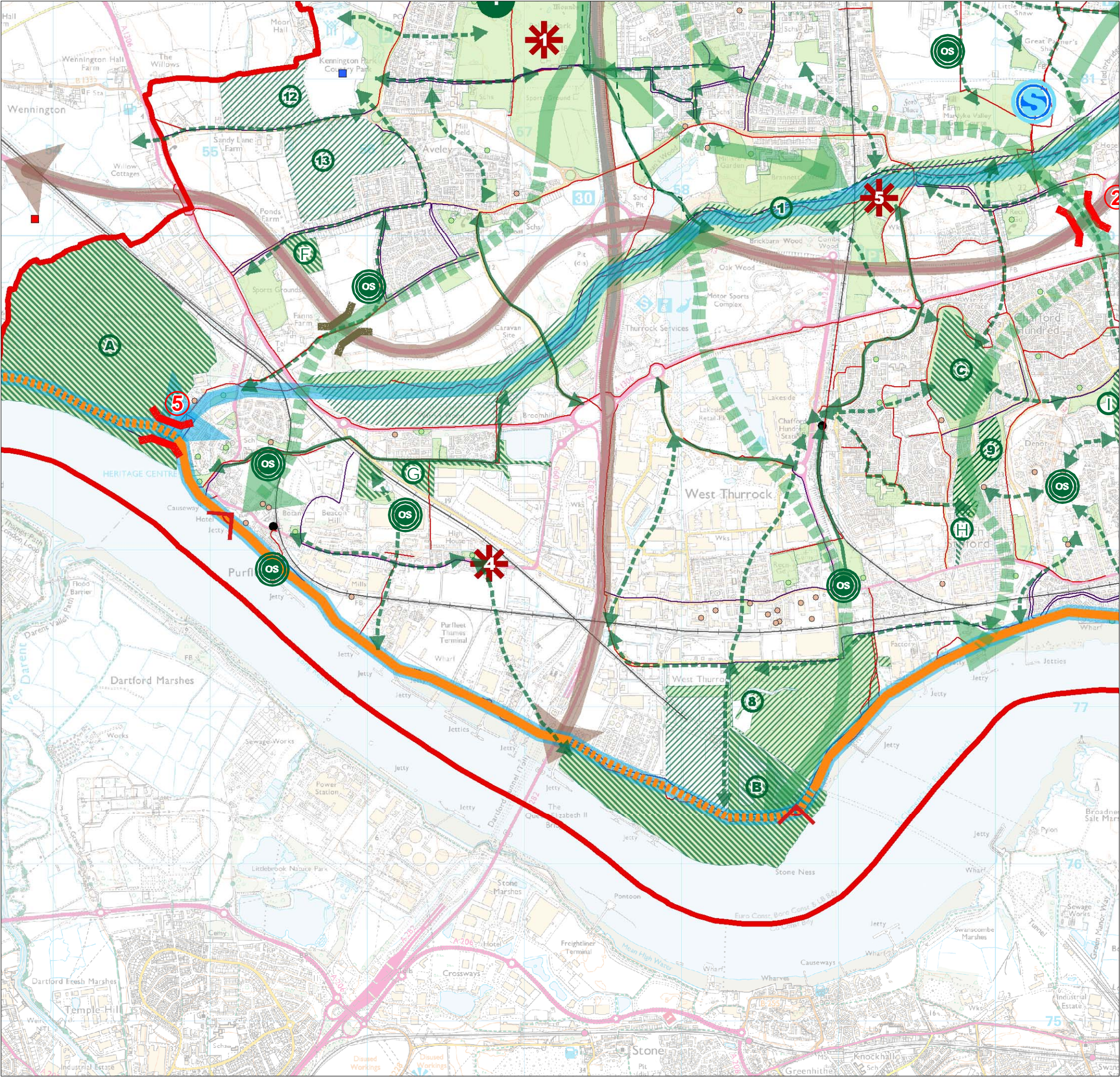
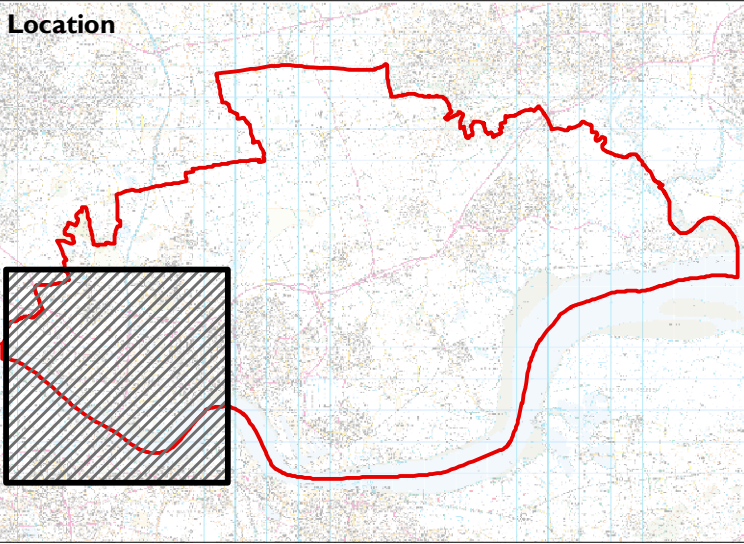
N
W E
S

0 0.5 1 1.5 Km

Scale: 1:25000

Source: Thurrock Council

Date: 04/01/2007



Thurrock Green Infrastructure Framework Plan
Figure 4.12 Local Opportunities Map2: Grays, Chadwell St. Mary and Tilbury

Key

Thurrock boundary

PROWs and Cycle Routes:

- Existing Routes
- Desired Routes
- The Forest Circle
- Existing Open Space (Access may be restricted)

Proposals:

- Strategic Views:

Previously Developed Land: (NLUD 2004)

- Previously developed land (Potential for Green Infrastructure)

Proposed Strategic Semi-Natural Greenspace:

- Mardyke Valley
- Tilbury Marshes
- Lion Gorge

Strategic Sites to Safeguard for Biodiversity and Geology:

- West Thurrock Marshes
- Chafford Gorge
- Lion Pit
- Grays Chalk Pit
- Globe Pit
- Hangman's Wood & Dene Holes

Strategic Multifunctional Greenspace Enhance:

- Tilbury Fort
- Blackshotts Leisure Centre

Strategic Heritage Asset:

- Tilbury Fort
- Davy Down
- Tilbury Docks

Strategic Links:

- Proposed Sustrans Cycle Route
- Riverways
- Proposed Strategic Green Links: Currently Accessible
- Proposed Strategic Green Links: Desired Links
- Parkways

Flood Management:

- Potential for SuDS
- Priority for Flood Management

Strategic Bridging Points:

- Proposed Strategic Bridging Points
- Existing Strategic Bridging Points

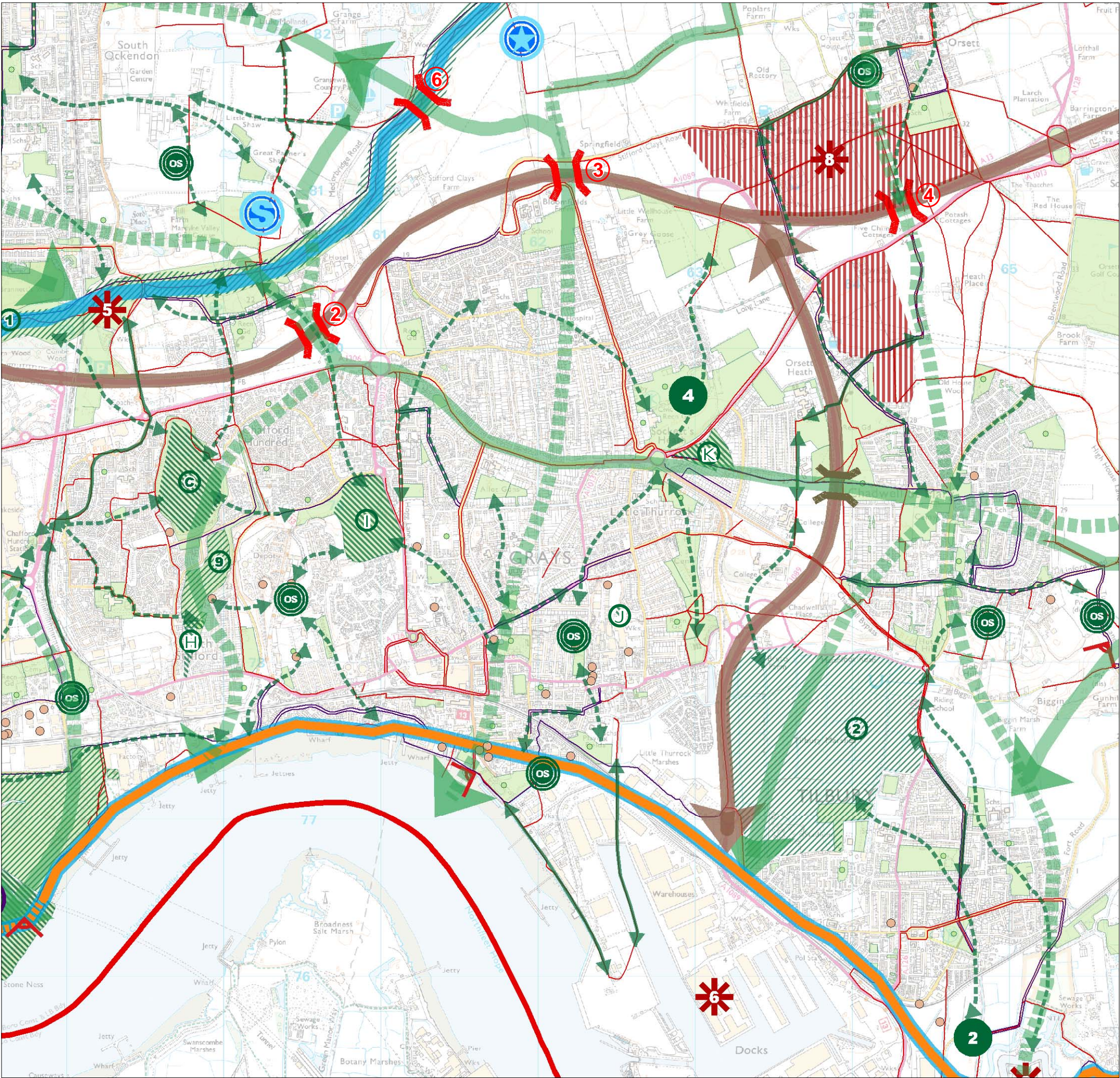
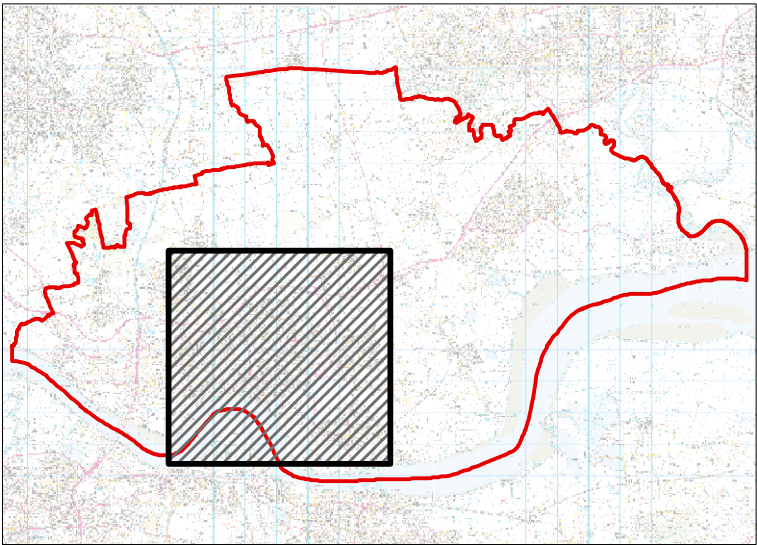
Local Greenspace Opportunities

- Potential for Multifunctional Greenspace
- Potential Local Green Links: Currently Accessible
- Potential Local Green Links

Scale: 1:25000

Source: Thurrock Council

Date: 04/01/2007



Thurrock Green Infrastructure Framework Plan
Figure 4.13 Local Opportunities Map3:Aveley and South Ockendon

Key

Thurrock boundary

PROWs and Cycle Routes:

- Existing Routes
- Desired Routes
- The Forest Circle
- Existing Open Space (Access may be restricted)

Proposals:

- Strategic Views
- Kennington Country Park (not identified in the Thurrock Open Spaces Strategy)

Previously Developed Land (NLUD 2004)

- Previously developed land (Potential for Green Infrastructure)

Proposed Strategic Semi-Natural Greenspace:

- Mardyke Valley
- Aveley + Ockendon Forest Park
- Lion Gorge
- West of Kennington Park
- South of Kennington Park
- Little Belhus
- Baldwins Farm
- Land South of North Ockendon
- Grange Farm

Strategic Sites to Safeguard for Biodiversity and Geology:

- Aveley Marshes

Chafford Gorge

Purfleet Road, Aveley

Purfleet Chalk Pits

Grays Chalk Pit

Strategic Multifunctional Greenspace Enhance:

- Belhus Park

Sustainable Land Management:

- Sustainable Management for Wood Fuel

Strategic Heritage Asset:

- Belhus Park
- Davy Down

Strategic Links:

- Proposed Sustrans Cycle Route
- Riverways
- Proposed Strategic Green Links: Currently Accessible
- Proposed Strategic Green Links: Desired Links
- Parkways

Flood Management:

- Potential for Strategic SuDS

Strategic Bridging Points:

- Proposed Strategic Bridging Points
- Existing Strategic Bridging Points

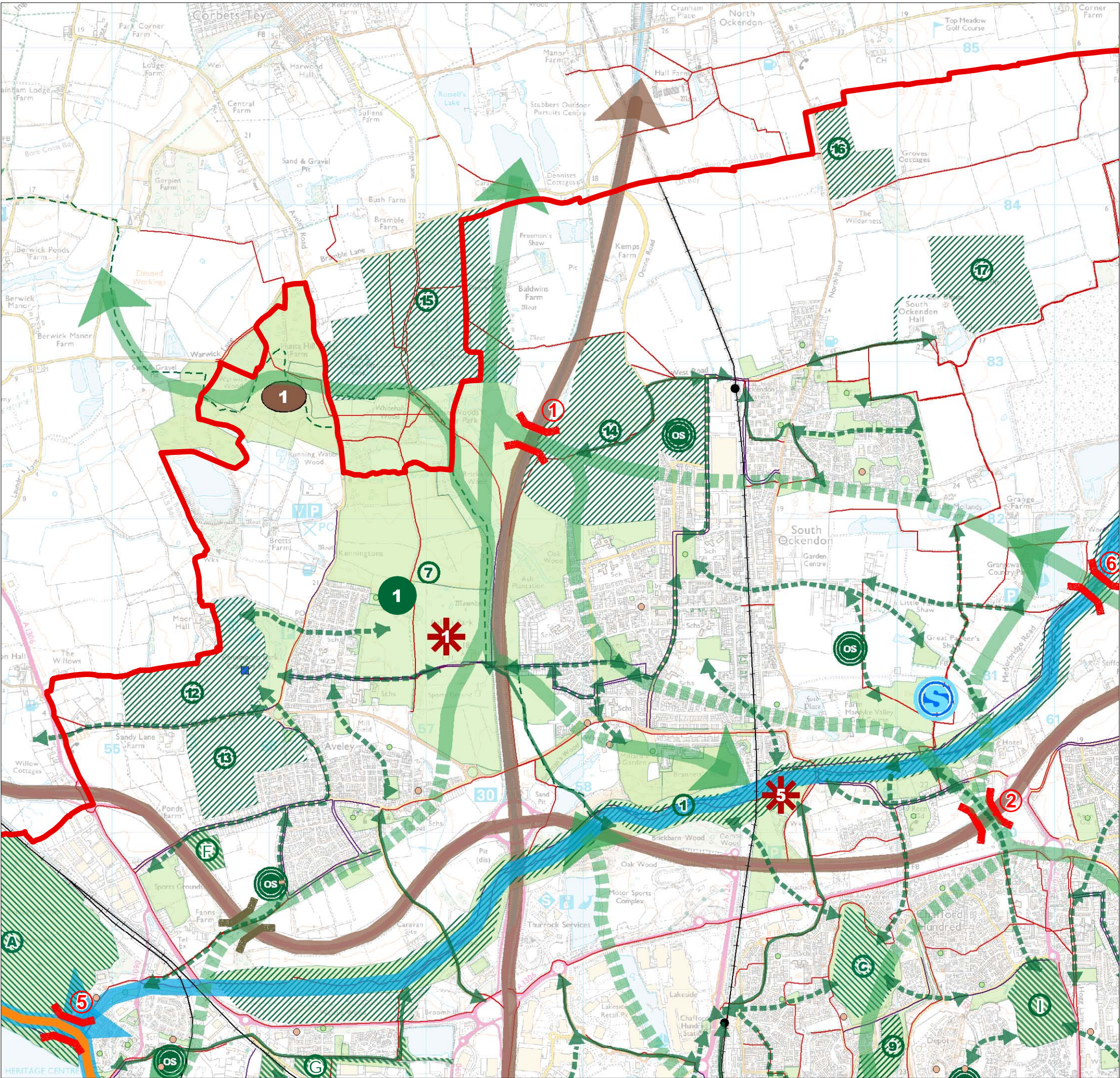
Local Greenspace Opportunities

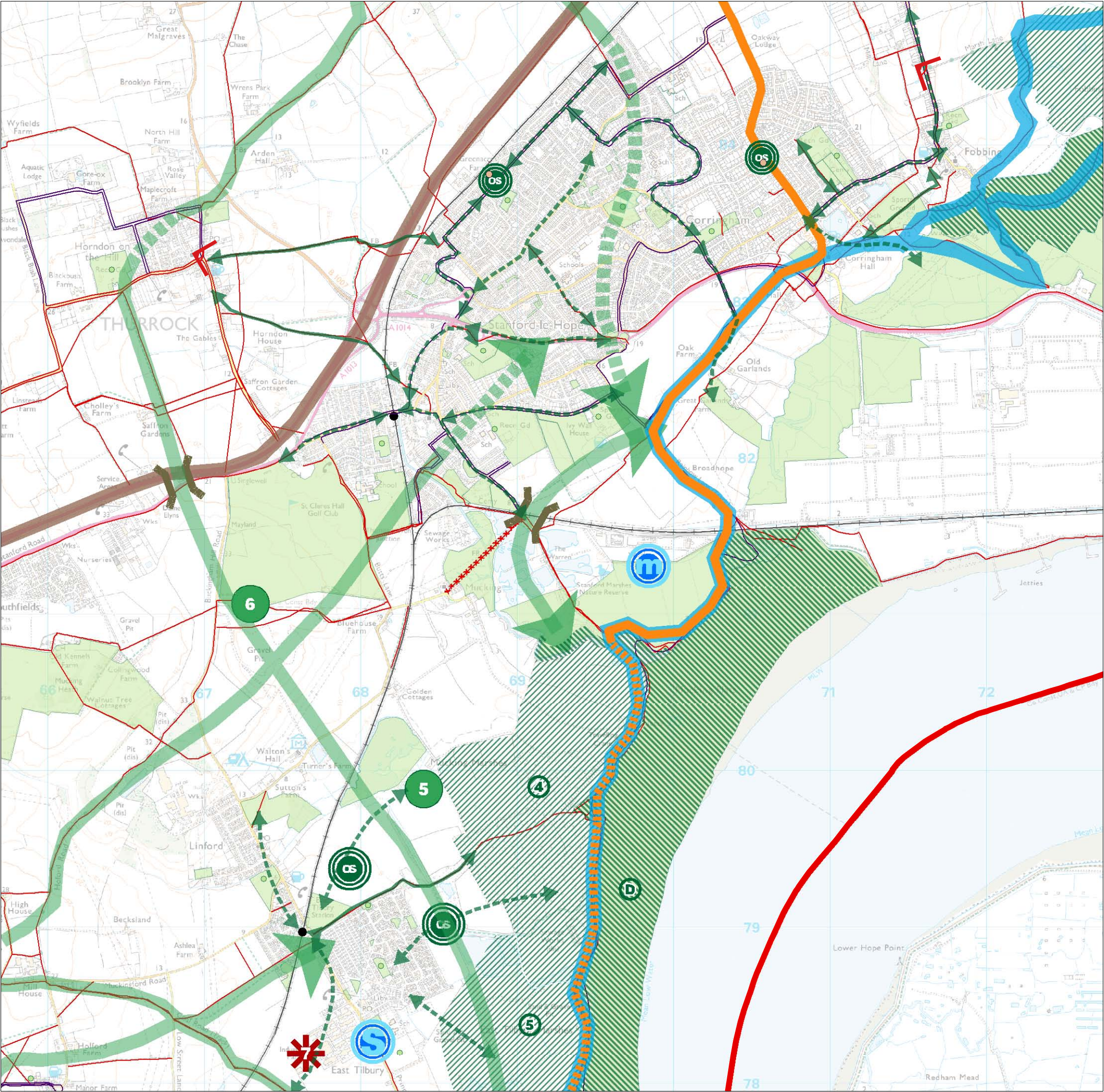
- Potential for Multifunctional Greenspace
- Potential Local Green Links Currently Accessible
- Potential Local Green Links

Source: Thurrock Council
Natural England

Date: 16/01/2007

Scale: 1:25000





Thurrock Green Infrastructure Framework Plan
Figure 4.14 Local Opportunities Map4: East Tilbury,
Stanford-le-Hope and Corringham

Source: Thurrock Council
Date: 04/01/2007

Key

Thurrock boundary

PROWs and Cycle Routes:

Existing Routes

Desired Routes

Cyclists Dismount

Existing Open Space (Access may be restricted)

Proposals:

Strategic Views:

Previously Developed Land: (NLUD 2004)

Previously developed land (Potential for Green Infrastructure)

Proposed Strategic Semi-Natural Greenspace:

Mucking Marshes

East Tilbury Marshes

Strategic Sites to Safeguard for Biodiversity and Geology:

Mucking Flats

Strategic Multifunctional Green Space Create:

Cory Country Park

Bluehouse Country Park

Natural Systems Opportunity

Potential for Biomass Cropping

Strategic Heritage Asset:

Bata Shoe Factory

Flood Management:

Potential for Strategic SuDS

Potential for Managed Realignment

Strategic Links:

Proposed Sustrans Cycle Route

Riverways

Proposed Strategic Green Links: Currently Accessible

Proposed Strategic Green Links: Desired Links

Parkways

Strategic Bridging Points:

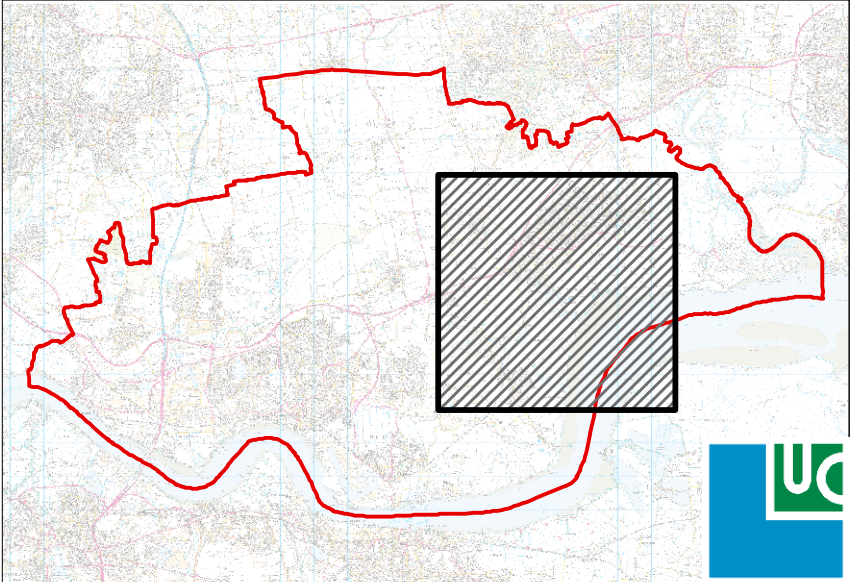
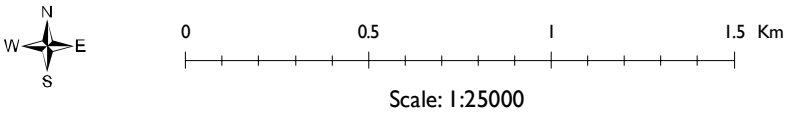
Existing Strategic Bridging Points

Local Greenspace Opportunities

Potential for Multifunctional Greenspace

Potential Local Green Links Currently Accessible

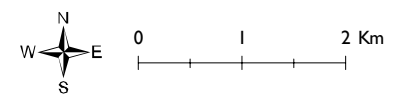
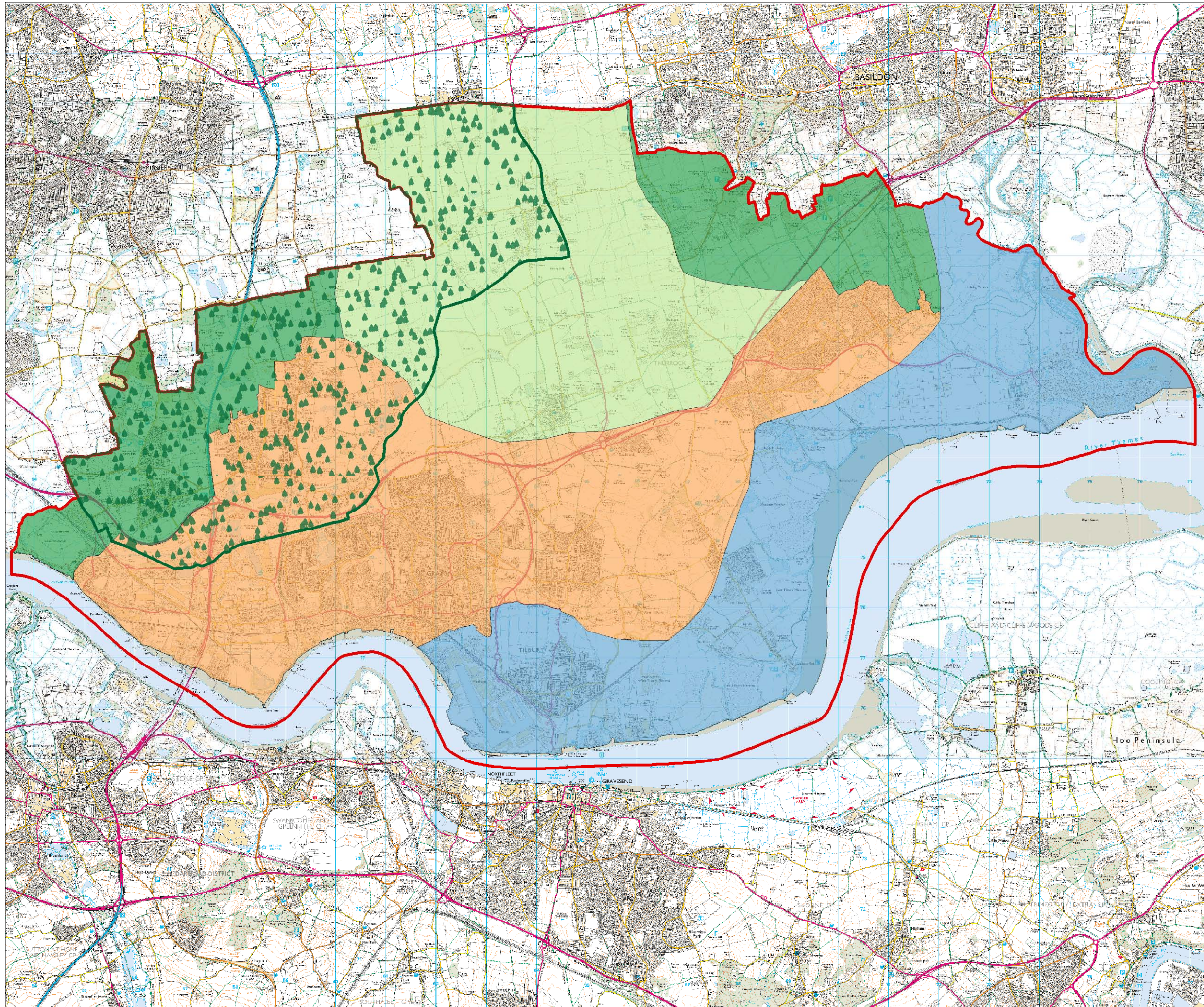
Potential Local Green Links



Thurrock Green Infrastructure Framework Plan

Figure 4.15 Landscape Management Areas

- Key**
- Thurrock boundary
 - Create / Restore Landscape Character
 - Marshland Landscape to be Conserved and Enhanced
 - Pastoral Landscape to be Conserved and Enhanced
 - Wooded Landscape Character to be Enhanced
 - Thames Chase Community Forest



Source: Thurrock Council

Date: 31/08/2006

