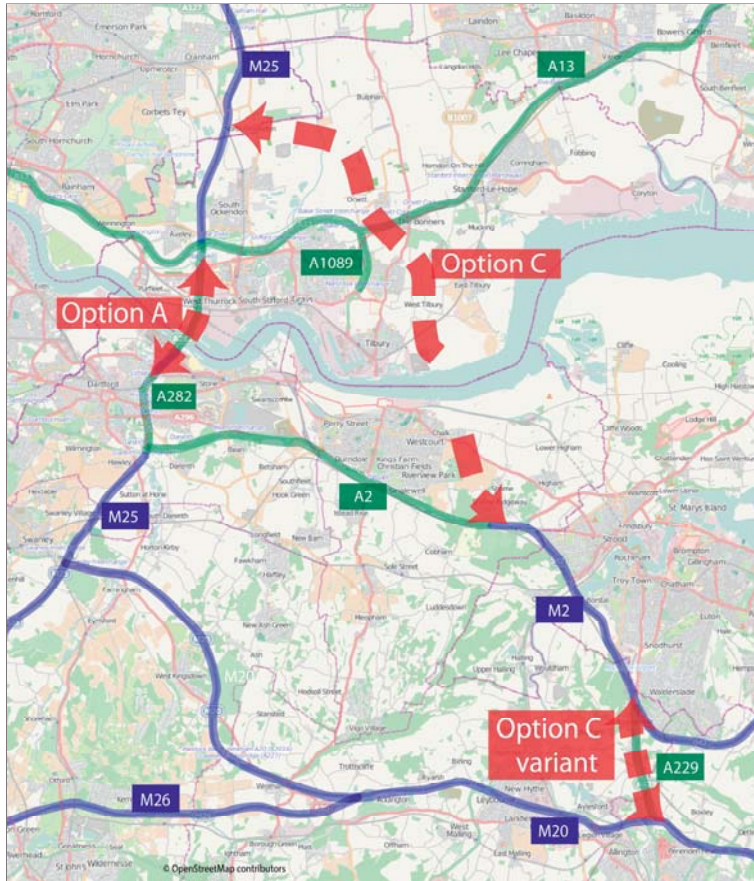


 [thurrock.gov.uk](http://thurrock.gov.uk)

# Public Meeting – Lower Thames Crossing

2nd April 2014

# Lower Thames Crossing Options



Following the previous consultation of routes A to C, route B was dropped from consideration by the Department of Transport.

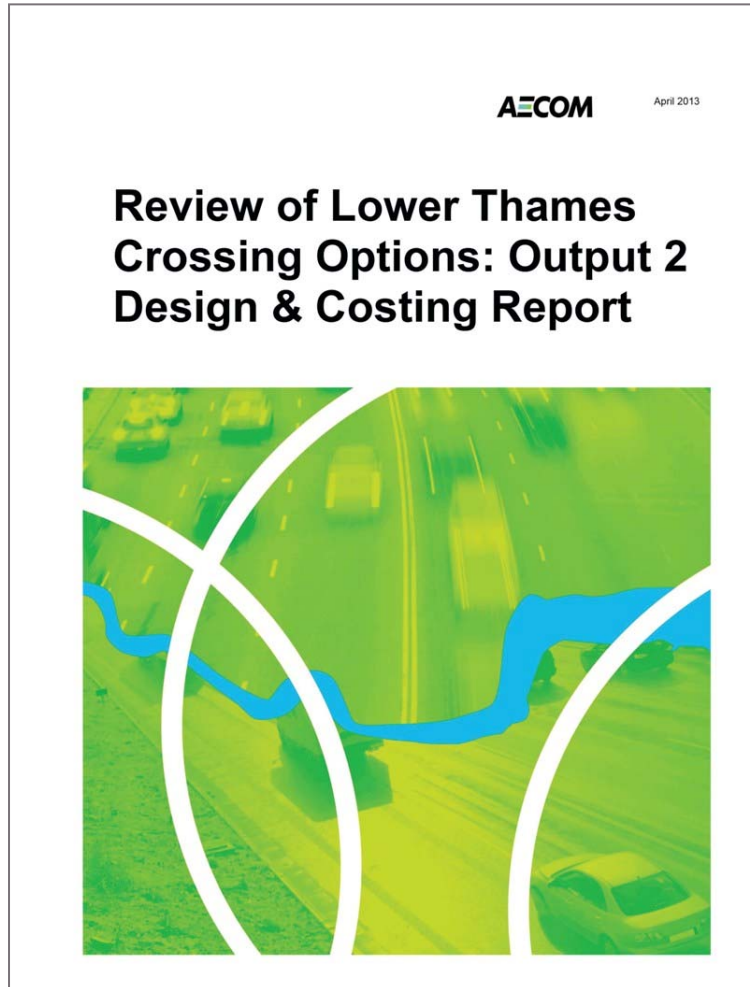
Further consideration on route A and C is being carried out.

Thurrock has continued to investigate the environmental impacts of the proposed Lower Thames Crossing.

Today we share our work on 3D modelling of the costed route

2nd April 2014

# Lower Thames Crossing Consultation



## Option C

A dual carriageway with a local junctions onto A13 at A1089 Dock Approach Road and the A128 at Orsett Cock Roundabout.

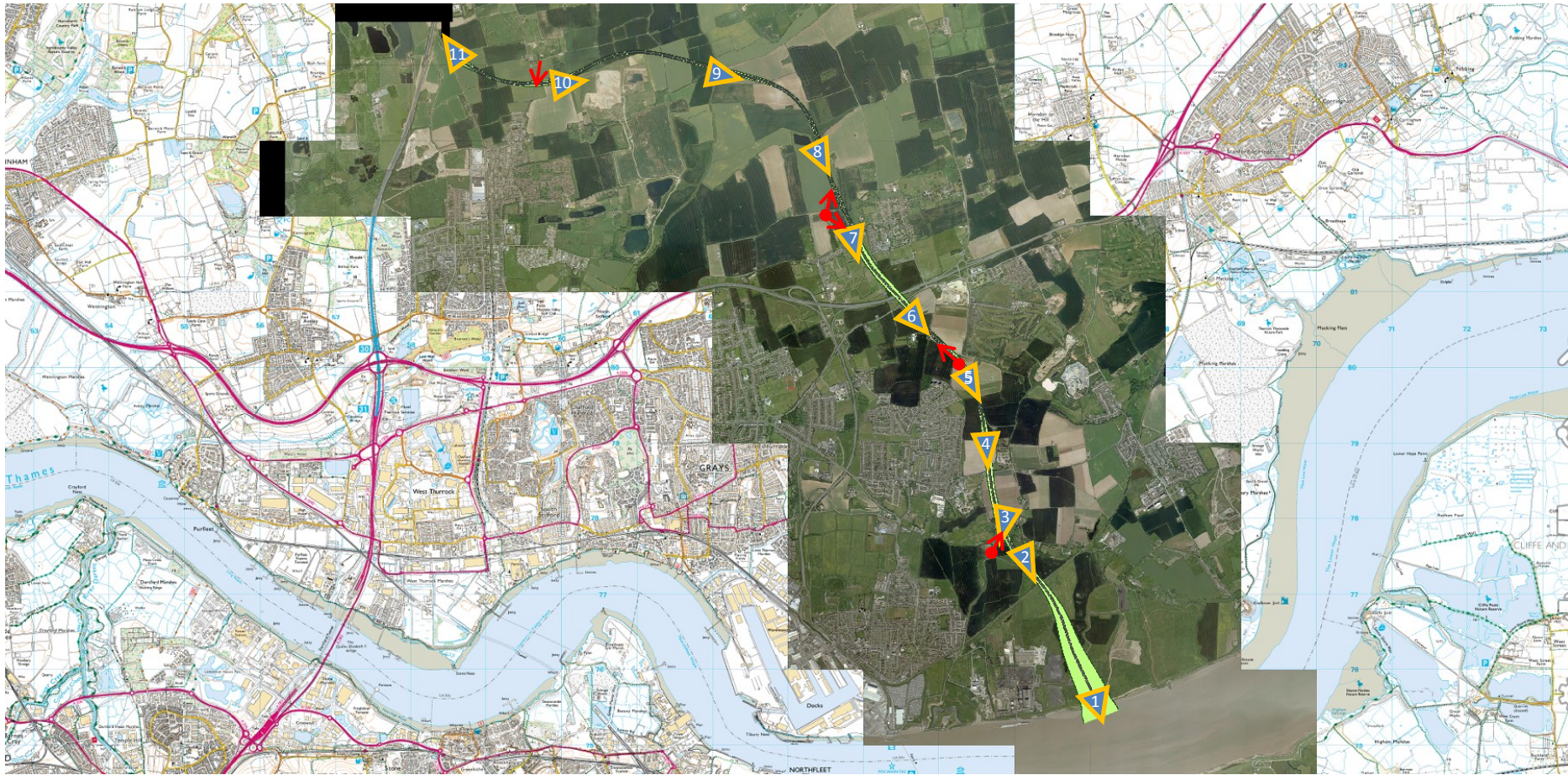
The report states that a Motorway connection between the M25 and M2 would be logical. However this would be a wider road and local access would be unlikely



# Lower Thames Crossing - Option C Costed Proposal

# Option C

Illustrations of route designed for costing



3D Model Aerial Views



Panoramic Views



Close up view

# Option C

Aerial View 1 – Northwards from above a possible new River Thames bridge crossing



# Option C

Aerial View 2 – Northwards of C2C Railway Line  
from above Parsonage Common





# Option C

Aerial View 3 – Northwards of Cooper Shaw Road towards Gun Hill



2nd April 2014

# Option C

Panoramic View northwards from Fort Road



2nd April 2014

# Option C

Close up view northwards from Fort Road



2nd April 2014

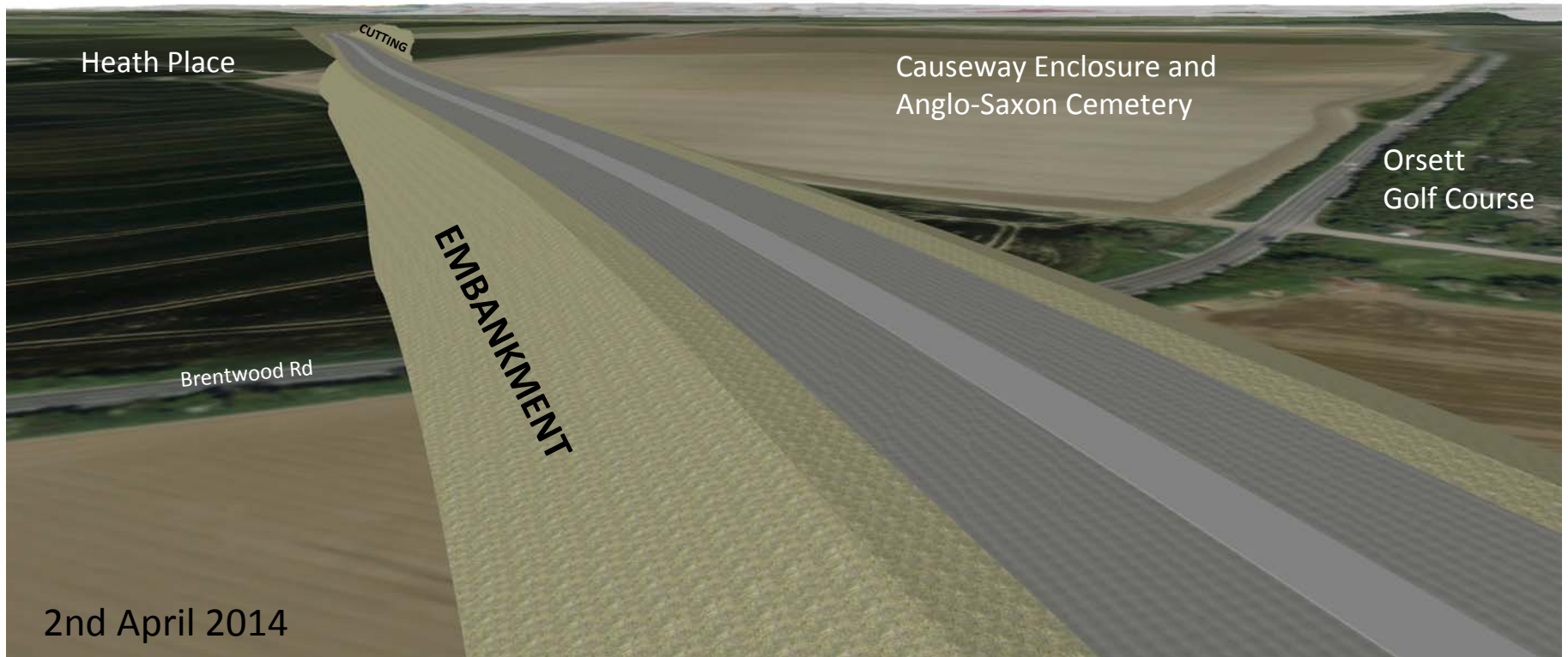
# Option C

Aerial View 4 – Northwards above the junction of Turnpike Lane, Linford Road and High House Lane



# Option C

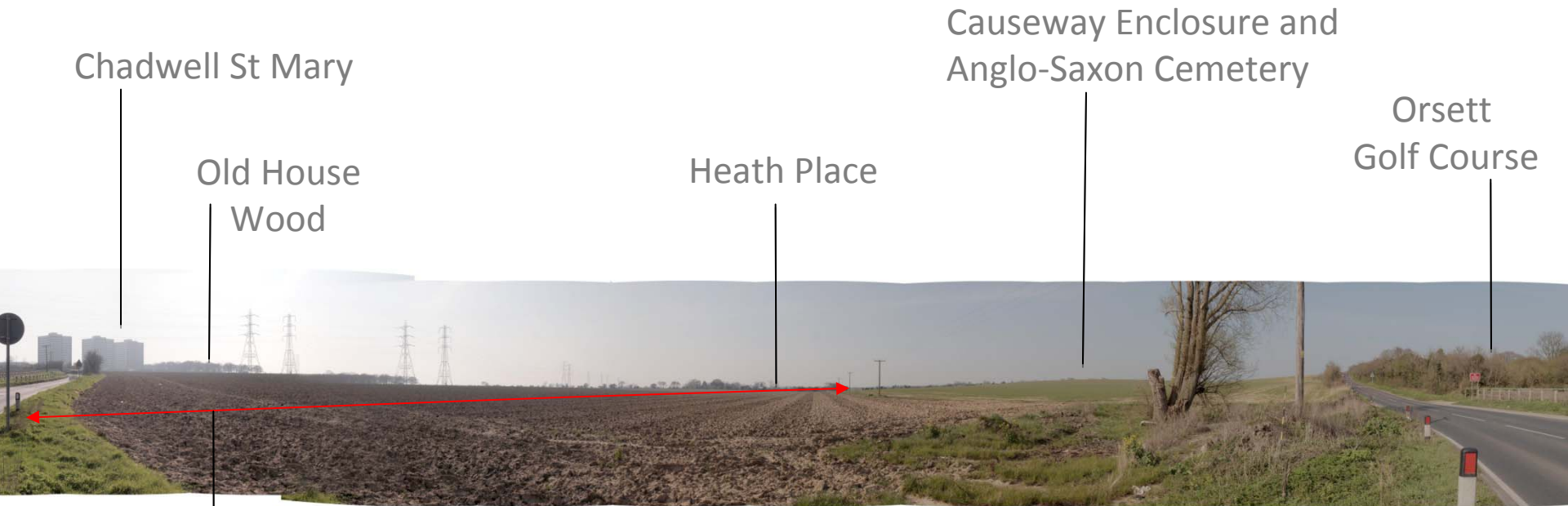
## Aerial View 5 – Northwest bridging over Brentwood Road by Brooks Farm



2nd April 2014

# Option C

Panoramic view north west from Brentwood Rd



Chadwell St Mary

Old House  
Wood

Heath Place

Causeway Enclosure and  
Anglo-Saxon Cemetery

Orsett  
Golf Course

Approximate route

2nd April 2014

# Option C

Close up view north west from Brentwood Rd

Heath Place

Elevated A13  
north of Potash Cottages

Approximate route

2nd April 2014



# Option C

Aerial View 6 – Northwards from Potash Cottages to Orsett, under the A13 and A1013 Stanford Road

Springfield Style and Iron Age Enclosures  
Slade Hold Cottages  
Mill House  
Orsett Village Conservation Area

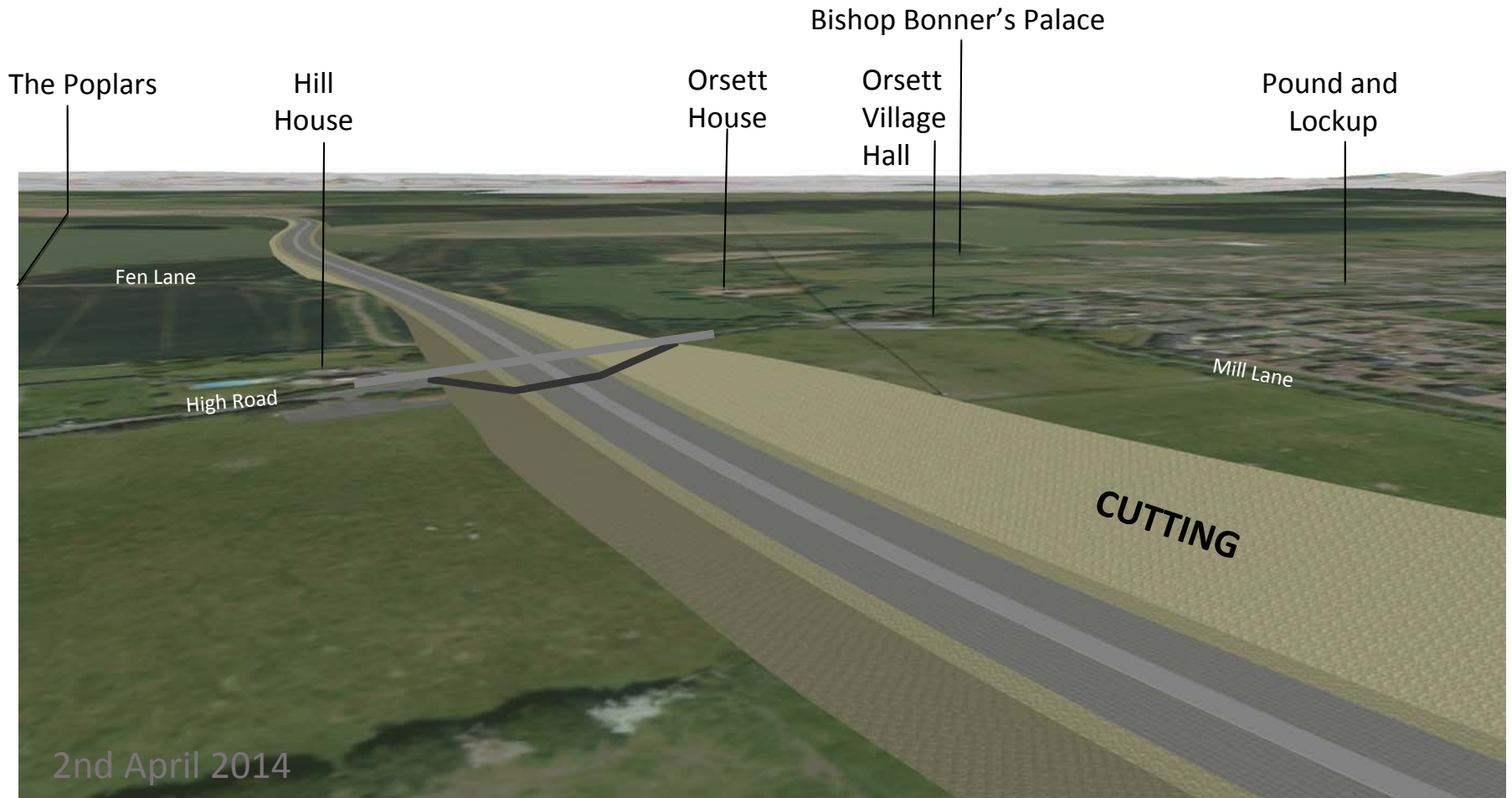


2nd April 2014



# Option C

## Aerial View 7 – Northwards to Orsett Village Hall, Orsett House and Fen Lane



2nd April 2014

# Option C

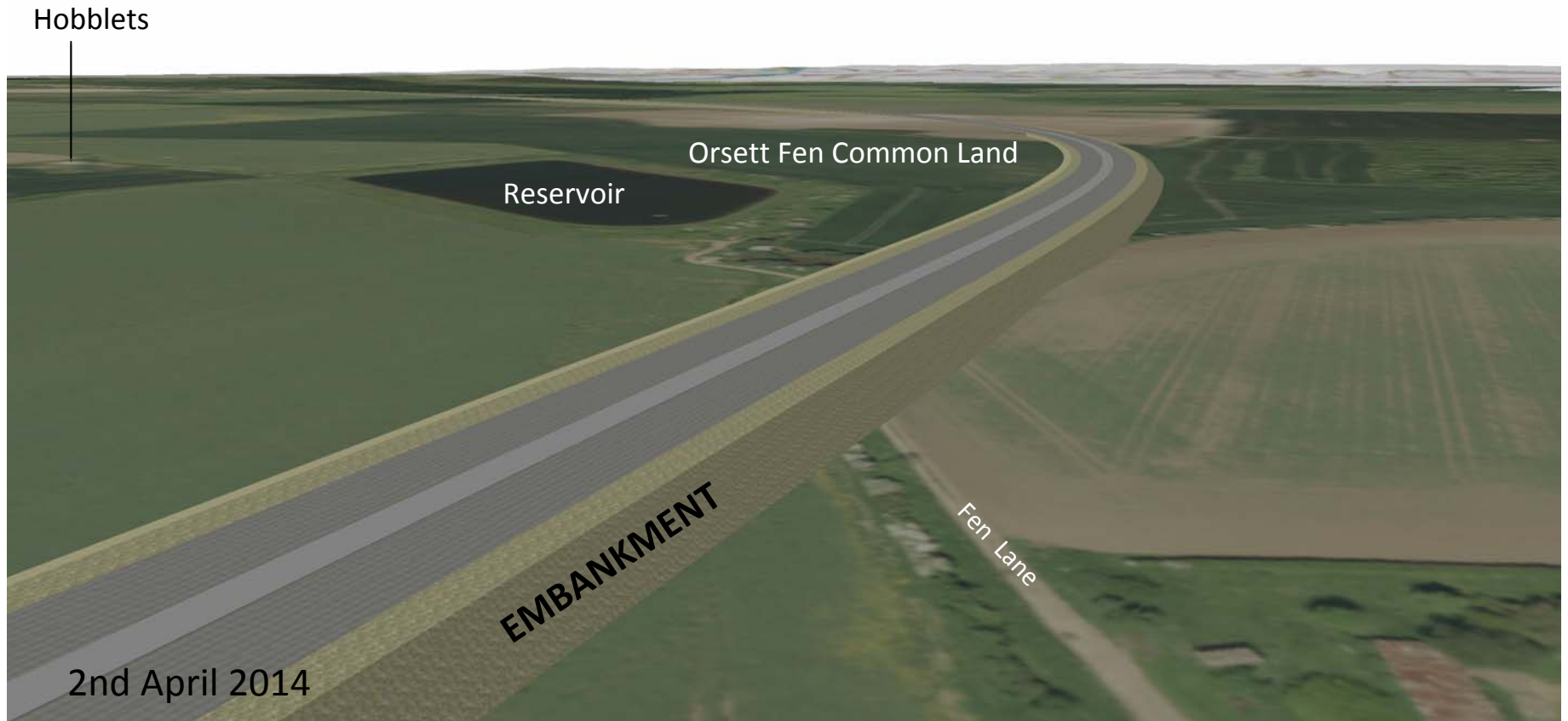
Panoramic View: south east to Orsett House  
Parkland setting and north east to Orsett Fen



2nd April 2014

# Option C

## Aerial View 8 – Northwards to Reservoir and Orsett Fen Common Land



# Option C

Aerial View 9 – Westwards to Fenland, the Mardyke River and Bridleway 219



# Option C

Aerial View 10 – Westwards to South Ockendon



# Option C

View southwards to South Ockendon



2nd April 2014

# Option C

Aerial View 11 – Looking back along the route  
from the proposed junction with the M25

---



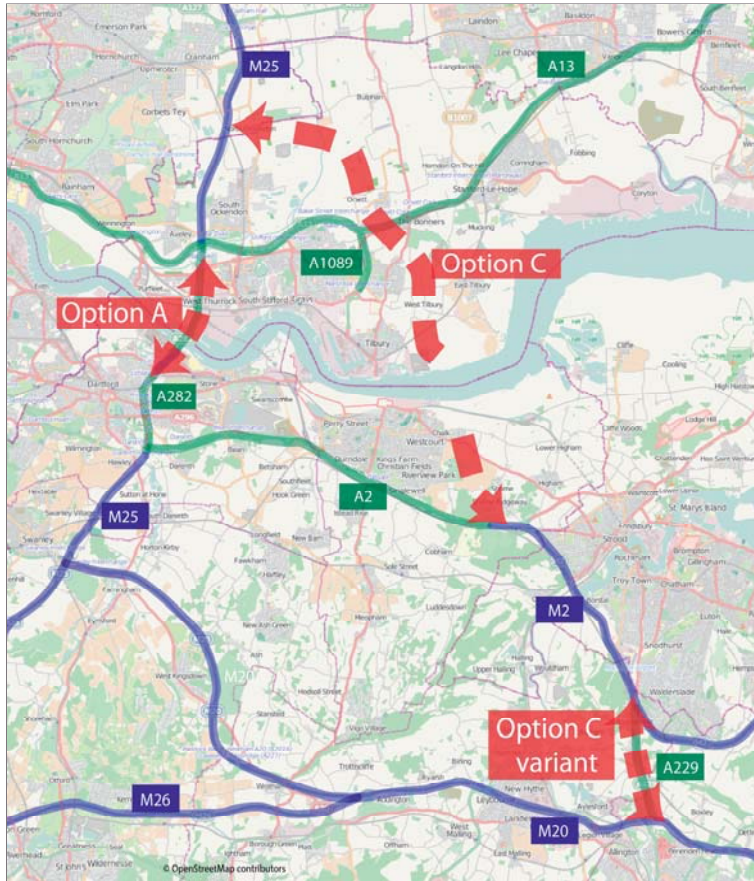
The Wilderness

South Ockendon  
Hall

South Ockendon

2nd April 2014

# Lower Thames Crossing Options



2nd April 2014