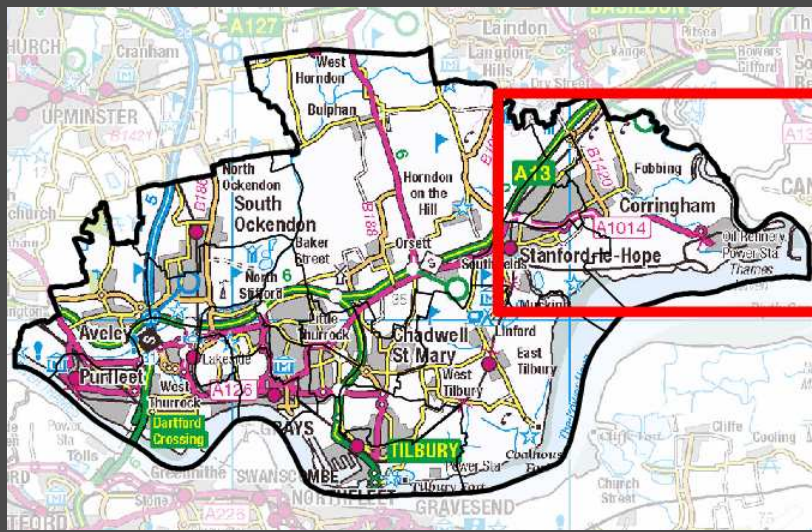


Corringham and Fobbing Ward (E05002233)

Published by Thurrock Public Health
2017/18

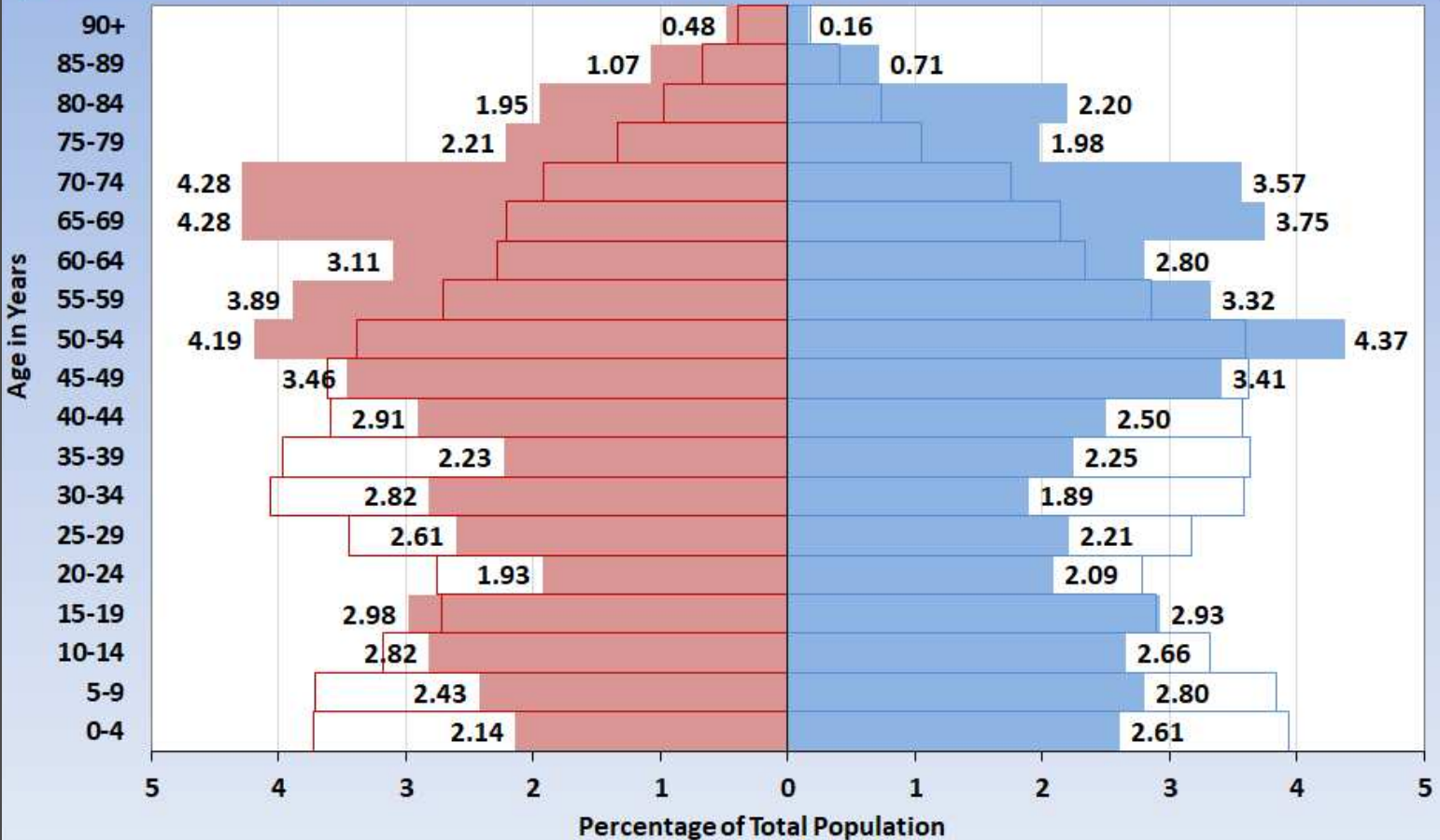
 thurrock.gov.uk



Population Pyramid

Corringham & Fobbing Population Pyramid, 2017

■ Thurrock Females (%)
 ■ Thurrock Males (%)
 ■ Corringham & Fobbing Females(%)
 ■ Corringham & Fobbing Males(%)



Corringham and Fobbing Ward has a greater percentage of adults aged 50-89yrs compared to Thurrock.

Conversely, there is a smaller proportion of 0-44yr olds.

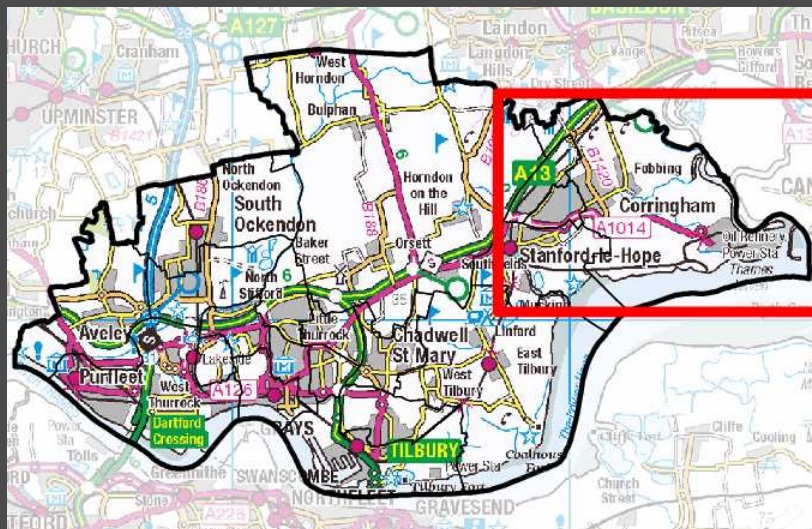
Source: ONS Mid-Year Estimates 2017



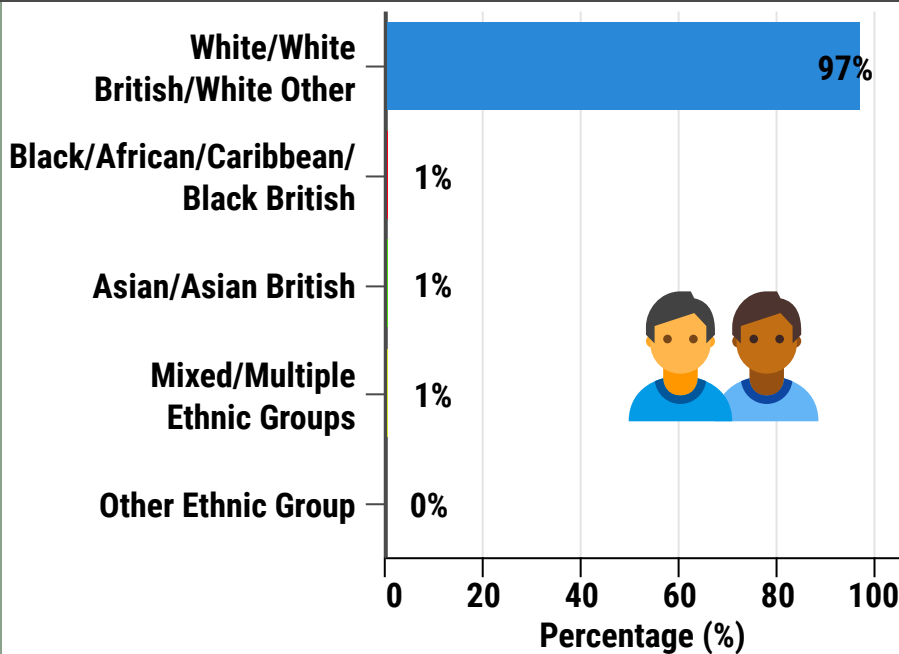
Corringham and Fobbing Ward (E05002233)

Published by Thurrock Public Health
2017/18

 thurrock.gov.uk



Ethnicity Groups (%)



Deprivation

Corringham and Fobbing Ward is ranked 15th out of the 20 Thurrock wards.

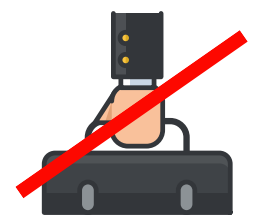
1 = Most Deprived
20 = Least Deprived



Deprivation is strongly associated with poor physical and mental health
Source: DCLG (Department of Communities and Local Government)

Employment

Employment Status	Corringham and Fobbing Ward (%)	Thurrock (%)
Employee: Full-time	37.0	42.3
Employee: Part-time	15.4	14.5
Self-employed	11.3	9.0
Unemployed	3.2	5.2
Retired	20.6	12.2
Looking after home or family	3.5	5.1
Long-term sick or disabled	2.3	3.4
Student (inc. full-time students)	2.6	3.5



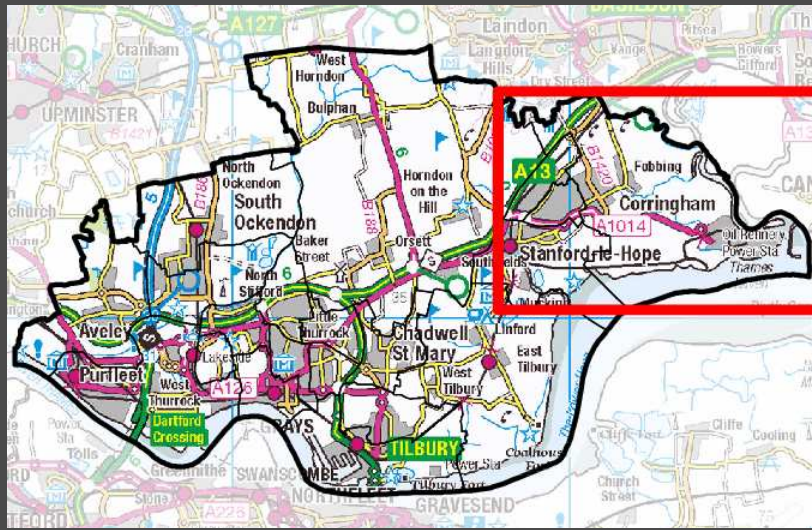
Being in employment has been shown to be highly protective to one's health.

Conversely, evidence shows that being unemployed is linked to poor physical and mental health outcomes.

Corringham and Fobbing Ward (E05002233)

Published by Thurrock Public Health
2017/18

 thurrock.gov.uk



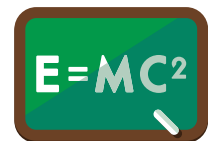
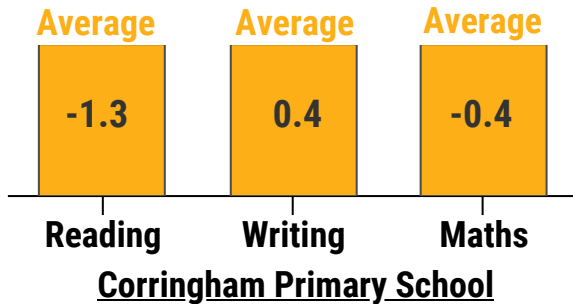
Primary School



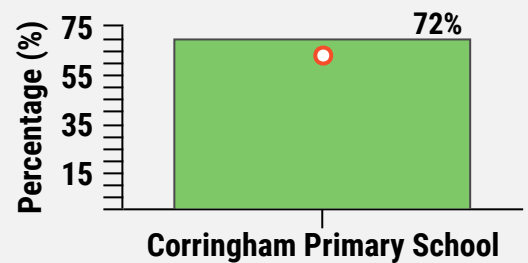
Ortu Corringham Primary School

Approx pupils - 488
Ofsted rating - Good

Government pupil progress score, comprises of key stage 1 assessments & key stage 2 tests, compared to pupils across England. Scoring range is -5 & +5, 0.0 being the average.



SATs Results 2017

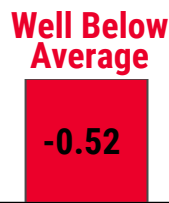


● % Pupils Meeting Expected Standard
○ England Average (63%)

Secondary School

Ortu Gable Hall School

Approx pupils - 1,469
Ofsted rating - Requires Improvement



Progress 8 Measure

Government pupil progress scores, made between the end of key stage 2 and the end of key stage 4, compared to pupils across England. Scoring range is -5 & +5, 0.0 being the average.

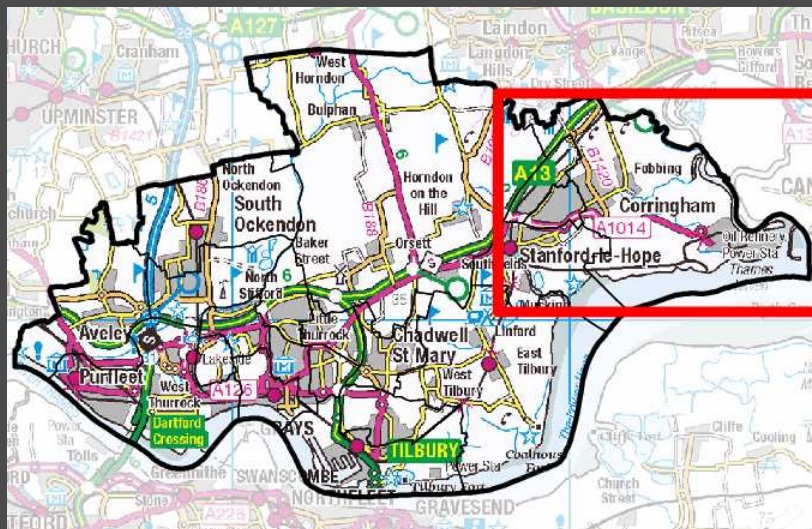
Educational achievement is strongly correlated with good health. Research demonstrates that people with high levels of educational achievement live longer and spend a smaller percentage of their life living with poor health.

Source: www.compare-school-performance.service.gov.uk

Corringham and Fobbing Ward (E05002233)

Published by Thurrock Public Health
2017/18

 thurrock.gov.uk



Reported Crime 2016



Count of crimes Oct'16 to Sep'17 - 267

Crime rate per 1,000 persons - 19.06

Thurrock crime rate per 1,000 persons - 47.62

England crime rate per 1,000 persons - 149.58



Reported crime rates in Corringham and Fobbing Ward ward are statistically significantly lower than England's. Compared to Thurrock there is a lower crime rate within this Ward.

Source: www.ukcrimestats.com

Residents Views



63% of Little Thurrock Blackshots residents are satisfied with their local area where they live.

61% of Little Thurrock Blackshots residents feel safe going outside in their local area after dark.



Persons feeling unsafe and less satisfied within their area could lead to social isolation and impact negatively on physical/mental health.

Source: Thurrock Council Residents Survey 2016

Community Support

Local Area Coordinator (LAC)

A local area coordinator connects individuals with support and assets within their local community.

Overview and examples of help can be found at
- www.thurrock.gov.uk/local-area-coordinators-help-in-community

Ward LAC - Susan Griggs

Mobile - 07920541258

Email - Sgriggs@thurrock.gov.uk



Community Led Support (CLS)

A new approach to bring Adult Social Care into the community. CLS is being introduced initially in the Tilbury and Chadwell area.

Contact Thurrock First – 01375 511000
OR



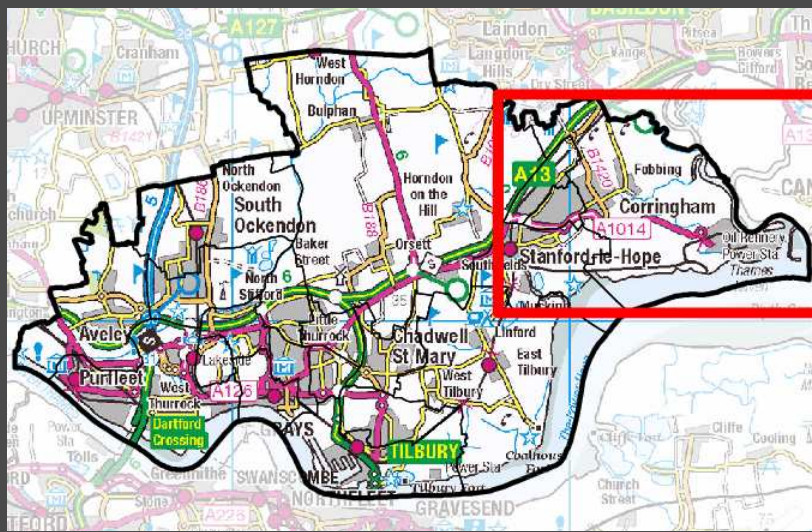
Pop along to one of the CLS 'Talking Shop' drop in sessions advertised via
www.strongertogether.org.uk

Source: Thurrock Council Adult, Housing & Health

Corringham and Fobbing Ward (E05002233)

Published by Thurrock Public Health
2017/18

 thurrock.gov.uk



● = Not statistically different

● = Statistically significantly different

Binge Drinking

**Corringham and Fobbing
Ward - 17.7%**

England - 20.0%



(% of population 16+ that binge drink)

Binge drinking can increase blood pressure, affect mood and memory & longer term, can lead to mental and physical health issues.

Source - PHE Local Health (2006/08)

Smoking

**Corringham and Fobbing
Ward - 19%**

England - 18%



(Prevalence of 18yrs+ self-reported smoker)

Smoking causes 84% of deaths from lung cancer & 83% of deaths from chronic obstructive pulmonary disease (COPD)

Source - ASH Ready Reckoner (2016)

Obesity (Adult)

**Corringham and Fobbing
Ward - 29.6%**

England - 24.1%



(% of population aged 16+ with a BMI 30+)

Obesity causes high blood pressure, leading to strokes, high cholesterol, high blood sugar, and heart disease.

Source - PHE Local Health (2006/08)

Obesity (Child)

**Corringham and Fobbing
Ward - 16.2%**

England - 19.3%



(% of children Yr 6 - overweight or obese)

Childhood obesity can lead to adult obesity & serious health issues including heart disease, type 2 diabetes, asthma, social discrimination, depression.

Source - PHE Local Health (2013/14-2015/16)

General Health



4.3% of persons reported that their general health was bad / very bad.

Conversely 82.2% of persons reported their general health as good / very good.



Life Expectancy at Birth



**Male - 83yrs
(England 79yrs)**



**Female - 84yrs
(England 83yrs)**

Life expectancy is a function of multiple elements including poor diet/lifestyle (excessive alcohol/drugs), environmental factors such as housing and air quality, educational attainment, deprivation and access to high quality of health services.

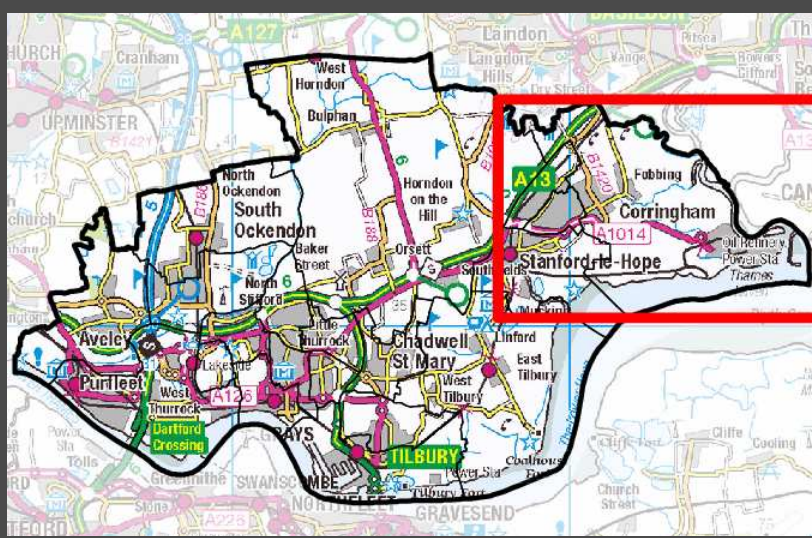
Source: PHE Local Health (2011-2015)

(Source for all data in this profile is Census 2011 unless otherwise stated)

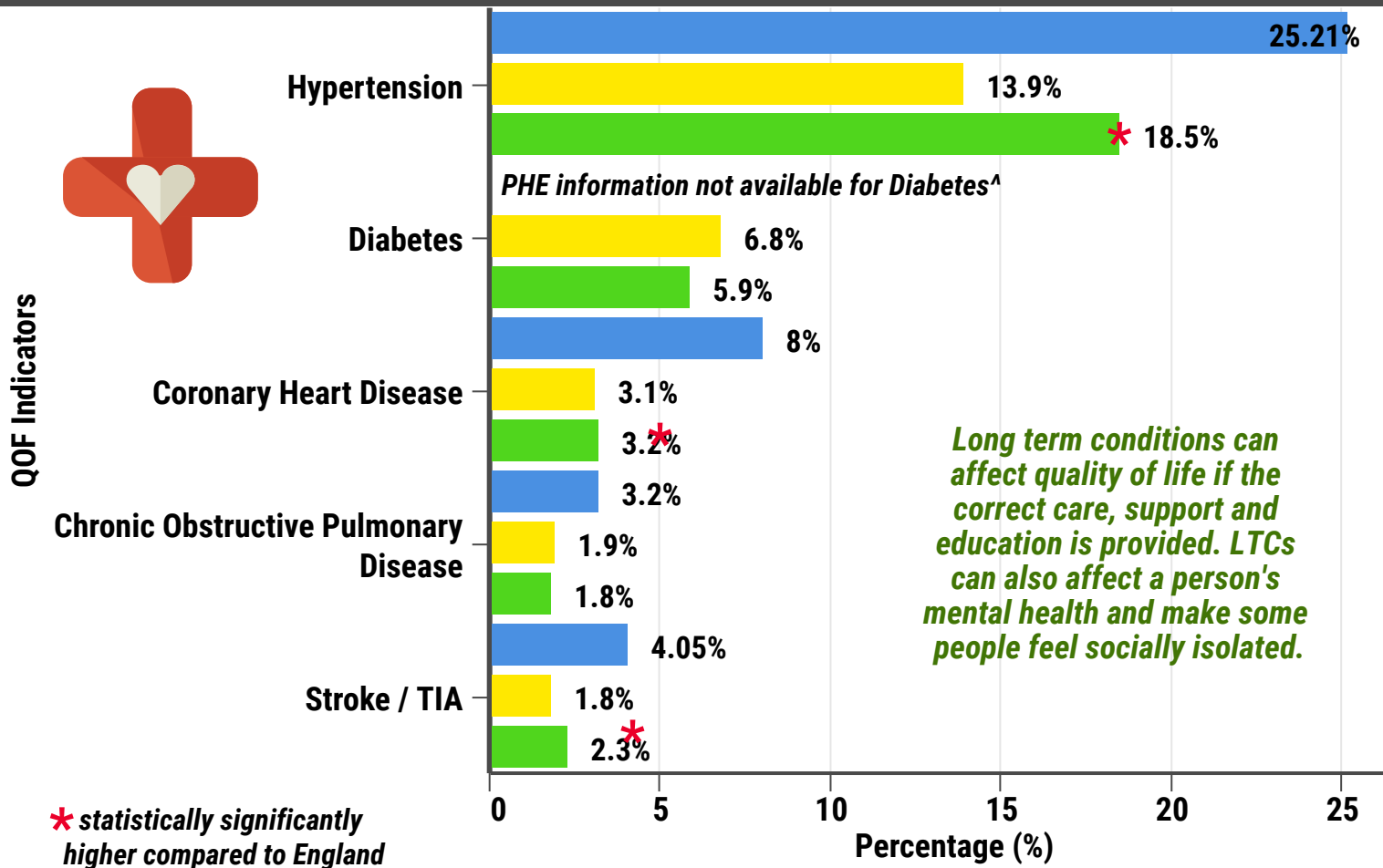
Corringham and Fobbing Ward (E05002233)

Published by Thurrock Public Health
2017/18

 thurrock.gov.uk



Long Term Conditions (LTC) 2017/18



- Ash Tree Surgery (% of practice adult population diagnosed and receiving treatment)
- England (% of practice adult population diagnosed and receiving treatment)
- PHE estimates[^] for above Practice (average % of adult population diagnosed and undiagnosed)

PHE estimate numbers (combined all above GP practices) of additional undiagnosed patients not receiving treatment [^]



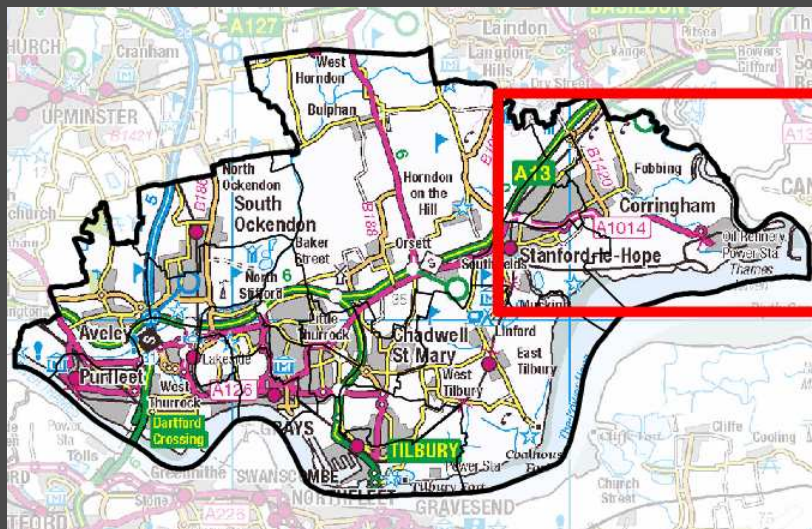
Stroke - 34 Diabetes - NA
Hypertension - 130
Coronary Heart Disease - 91
 Chronic Obstructive Pulmonary Disease - 27



Corringham and Fobbing Ward (E05002233)

Published by Thurrock Public Health
2017/18

 thurrock.gov.uk



Pharmacies



Allcures Pharmacy
19-21 Lampits Hill
Corringham
SS17 9AA



Opening Times
Mon - Sun
9.00 - 7.00pm



Source: Local Pharmaceutical Committees (LPCs)

GP Practices

**Ash Tree
Surgery**



List Size-1,928
CQC - Inadequate
(Jul 2018)

13% patients had
same day appointment
(Engalnd Average 33%)

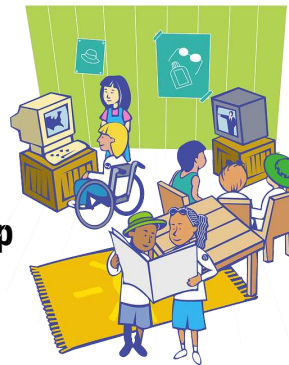


Source: National GP Patient Survey
2018 /NHS Choices

Facilities in the community

Social Groups

- Dementia Friendly Social Group
- Sensory Support Group



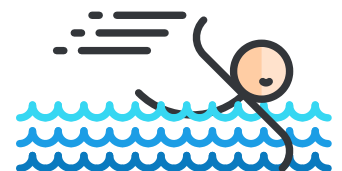
Community Buildings

- Corringham Library
- Rotary Club (Corringham)
- Corringham Village Hall



Health & Sports Groups

- Corringham Disabled Swimming

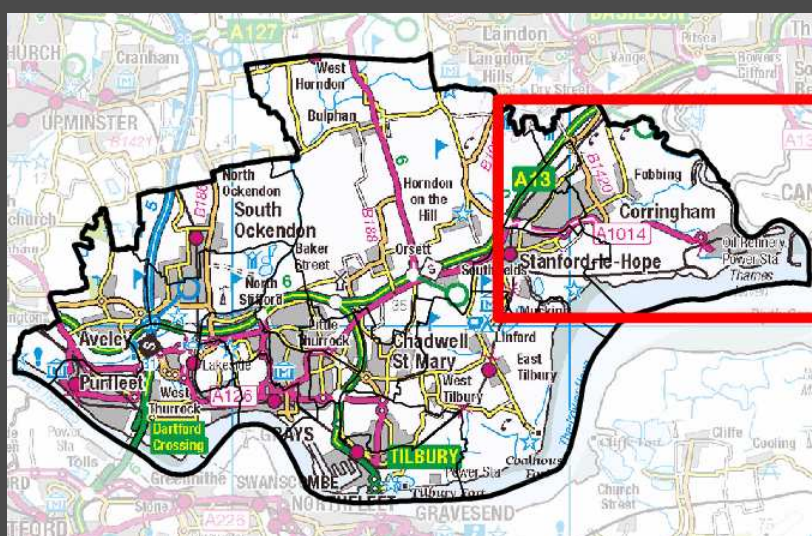


Source: Thurrock CVS - www.strongertogether.org.uk

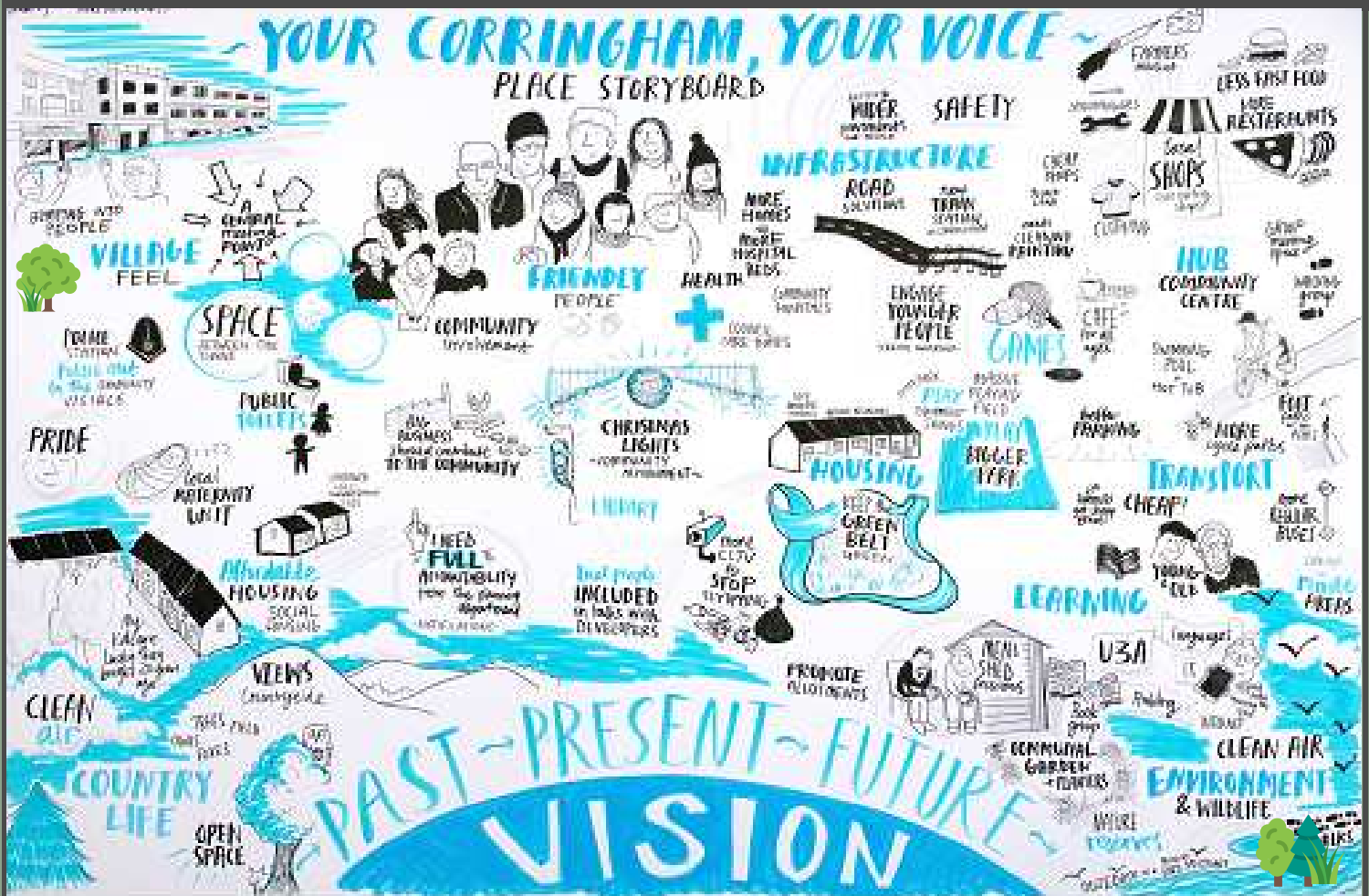
Corringham and Fobbing Ward (E05002233)

Published by Thurrock Public Health
2017/18

 thurrock.gov.uk



Your Place Your Voice



For more details on growth within Thurrock please visit - www.thurrock.gov.uk/planning-and-growth

Ward population - 5,407
Males - 2,642
Females - 2,765

One GP surgery and one pharmacy within this ward

Smoking prevalence-19.2% (significantly higher than England-18%)

Binge drinking prevalence-17.7% (not statistically different to England-20.0%)

Obesity (Adults) prevalence-29.6% (significantly higher than England-24.1%)

Two schools - Corringham Primary School and Gable Hall Secondary School

Summary of Corringham and Fobbing Ward

Corringham and Fobbing deprivation rank: 15/20

Life expectancy from birth- Male - 83yrs Female - 84yrs

Crime rate per 1,000 persons-19.06 (lower than the Thurrock crime rate of 47.62)

PHE models of undiagnosed patients - Hypertension - 130, Coronary Heart Disease - 91, Chronic Obstructive Pulmonary Disease - 27, Stroke - 34

Childhood obesity prevalence is 16.2% (significantly lower than England-19.3%)

Unemployment is lower, compared to Thurrock