

Little Thurrock Rectory Ward (E05002241)

Published by Thurrock Public Health
2017/18

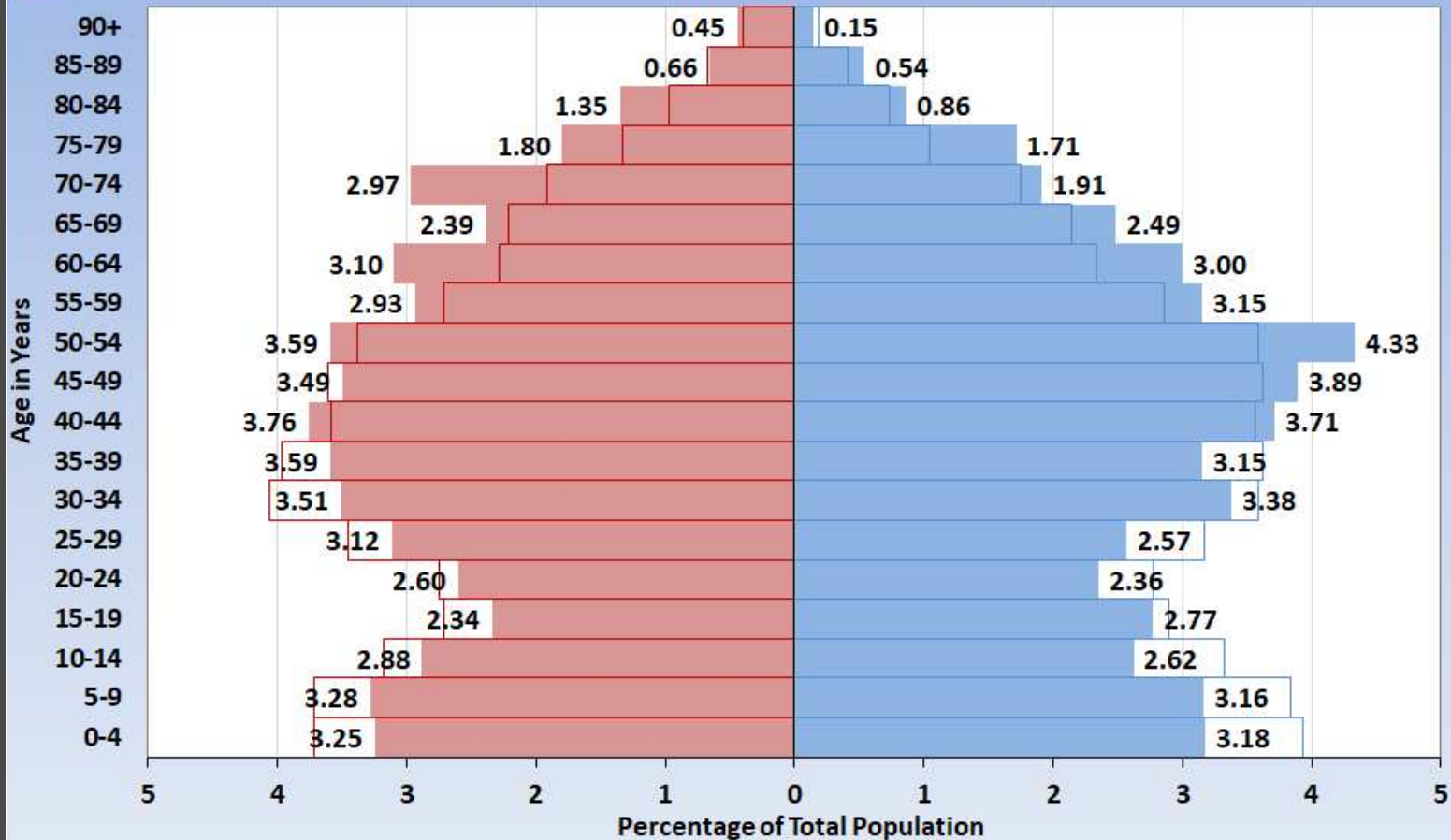
 thurrock.gov.uk



Population Pyramid

Little Thurrock Rectory Population Pyramid, 2017

Thurrock Females(%) Thurrock Males(%) Little Thurrock Rectory Females(%) Little Thurrock Rectory Males(%)



Little Thurrock Rectory Ward has a greater percentage of people aged 50-74yrs compared to Thurrock.

Conversely there is a smaller portion of 0-39yr olds.

Source: ONS Mid-Year Estimates 2017



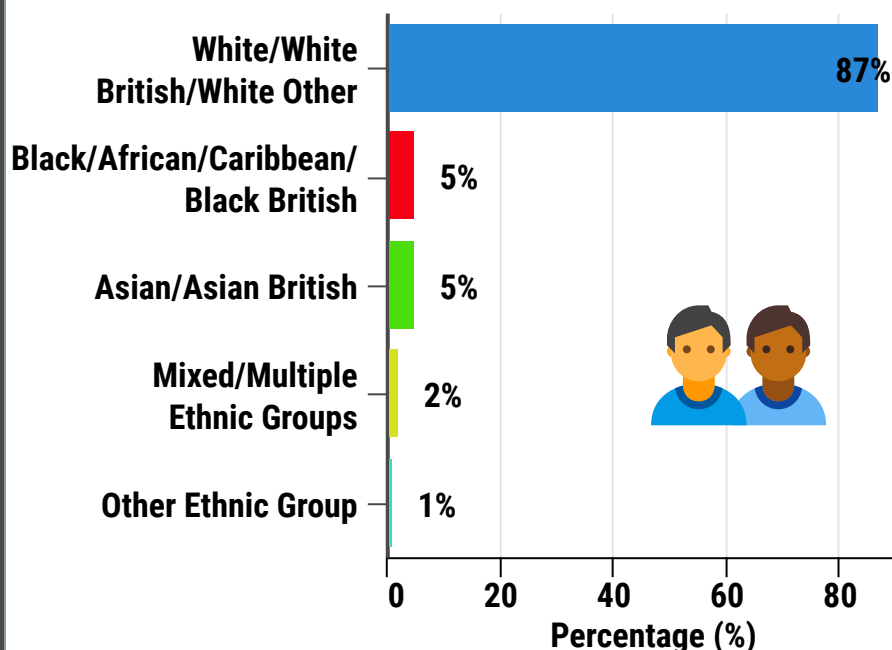
Little Thurrock Rectory Ward (E05002241)

Published by Thurrock Public Health
2017/18

 thurrock.gov.uk



Ethnicity Groups (%)



Deprivation

Little Thurrock Rectory is ranked 16th out of the 20 Thurrock wards

1 = Most Deprived
20 = Least Deprived

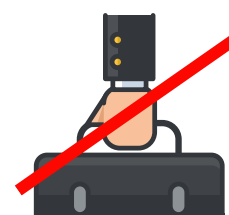


Deprivation is strongly associated with poor physical and mental health

Source: DCLG (Department of Communities and Local Government)

Employment

Employment Status	Little Thurrock Rectory Ward (%)	Thurrock (%)
Employee: Full-time	45.8	42.3
Employee: Part-time	14.8	14.5
Self-employed	9.5	9.0
Unemployed	3.7	5.2
Retired	13.8	12.2
Looking after home or family	3.3	5.1
Long-term sick or disabled	2.3	3.4
Student (inc. full-time students)	3.2	3.5



Being in employment has been shown to be highly protective to one's health.

Conversely, evidence shows that being unemployed is linked to poor physical and mental health outcomes.

(Source for all data in this profile is Census 2011 unless otherwise stated)

Little Thurrock Rectory Ward (E05002241)

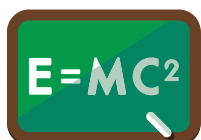
Published by Thurrock Public Health
2017/18

 thurrock.gov.uk



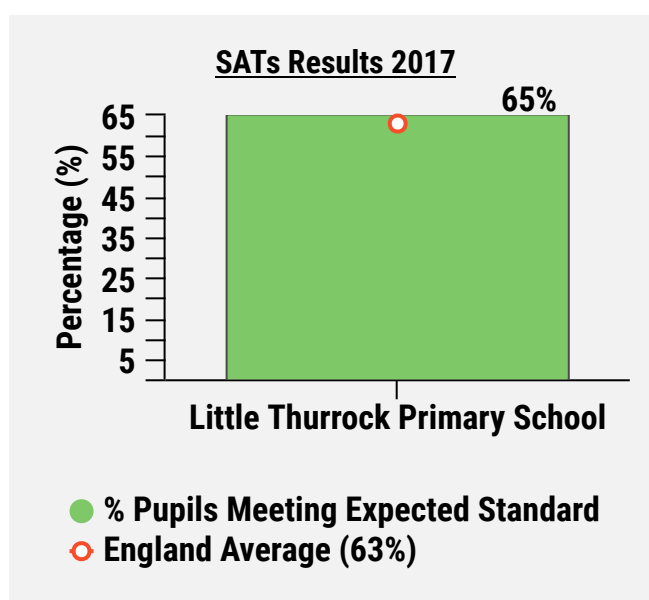
Primary Schools

(No Secondary Schools within this Ward)

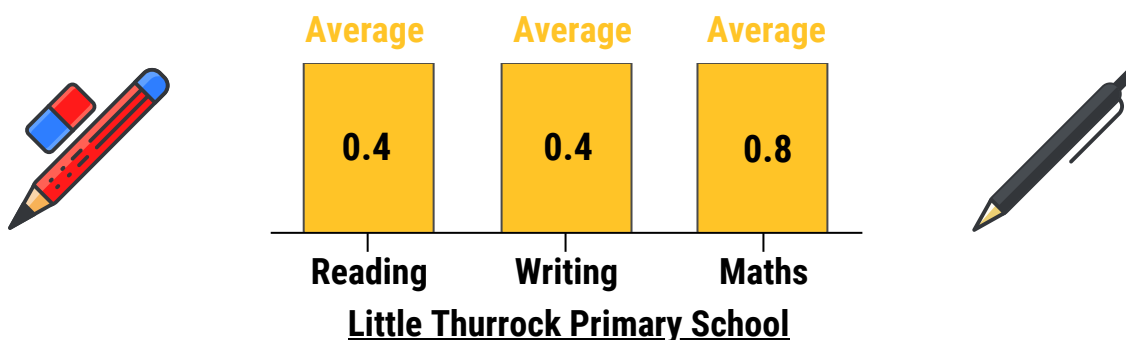


Little Thurrock Primary School

Approx pupils - 674
Ofsted rating - Good



Government pupil progress scores, comprise of key stage 1 assessments & key stage 2 tests, compared to pupils across England. Scoring range is -5 & +5, 0.0 being the average.



Educational achievement is strongly correlated with good health. Research demonstrates that people with high levels of educational achievement live longer and spend a smaller percentage of their lives living with poor health.

Source: www.compare-school-performance.service.gov.uk

Little Thurrock Rectory Ward (E05002241)

Published by Thurrock Public Health
2017/18



Reported Crime 2016



Count of crimes Oct'16 to Sep'17 - 321

Crime rate per 1,000 persons - 22.91

Thurrock crime rate per 1,000 persons - 47.62

England crime rate per 1,000 persons - 149.58

Reported crime rates in Little Thurrock Rectory ward are statistically significantly lower than England's. Compared to Thurrock there is a lower crime rate within this Ward.

Source: www.ukcrimestats.com



Residents Views



69% of Little Thurrock Rectory residents are satisfied with their local area where they live.

63% of Little Thurrock Rectory residents feel safe going outside in their local area after dark.



Persons feeling unsafe and less satisfied within their area could lead to social isolation and impact negatively on physical/mental health.

Source: Thurrock Council Residents Survey 2016

Community Support

Local Area Coordinator (LAC)

A local area coordinator connects individuals with support and assets within their local community.

Overview and examples of help can be found at
- www.thurrock.gov.uk/local-area-coordinators-help-in-community

Ward LAC - Renae Laybourn
Mobile - 07867684796
Email - RLaybourn@thurrock.gov.uk



Community Led Support (CLS)

A new approach to bring Adult Social Care into the community. CLS is being introduced initially in the Tilbury and Chadwell area.




Contact Thurrock First – 01375 511000
OR

Pop along to one of the CLS 'Talking Shop' drop in sessions advertised via
www.strongertogether.org.uk

Source: Thurrock Council Adult, Housing & Health

Little Thurrock Rectory Ward (E05002241)

Published by Thurrock Public Health
2017/18

 thurrock.gov.uk



● = Not statistically different

● = Statistically significantly different

Binge Drinking

**Little Thurrock
Rectory Ward - 18.3%**

England - 20.0%



(% of population 16+ that binge drink)

Binge drinking can increase blood pressure, affect mood and memory & longer term, can lead to mental and physical health issues.

Source - PHE Local Health (2006/08)

Smoking

**Little Thurrock
Rectory Ward - 19.9%**

England - 18%



(Prevalence of 18yrs+ self-reported smokers)

Smoking causes 84% of deaths from lung cancer & 83% of deaths from chronic obstructive pulmonary disease (COPD)

Source - ASH Ready Reckoner (2018)

Obesity (Adult)

**Little Thurrock
Rectory Ward - 26.4%**

England - 24.1%



(% of population aged 16+ with a BMI 30+)

Obesity causes high blood pressure, leading to strokes, high cholesterol, high blood sugar, and heart disease.

Source - PHE Local Health (2006/08)

Obesity (Child)

**Little Thurrock
Rectory Ward - 22.2%**

England - 19.3%



(% of children Yr 6 - overweight or obese)

Childhood obesity can lead to adult obesity & serious health issues including heart disease, type 2 diabetes, asthma, social discrimination, depression.

Source - PHE Local Health (2013/14-2015/16)

General Health



4% of persons reported that their general health was bad / very bad.

Conversely 84% of persons reported their general health as good / very good.



Life Expectancy at Birth



**Male - 84yrs
(England 79yrs)**



**Female - 85yrs
(England 83yrs)**

Life expectancy is a function of multiple elements including poor diet/lifestyle (excessive alcohol/drugs), environmental factors such as housing and air quality, educational attainment, deprivation and access to high quality of health services.

Source: PHE Local Health (2011-2015)

(Source for all data in this profile is Census 2011 unless otherwise stated)

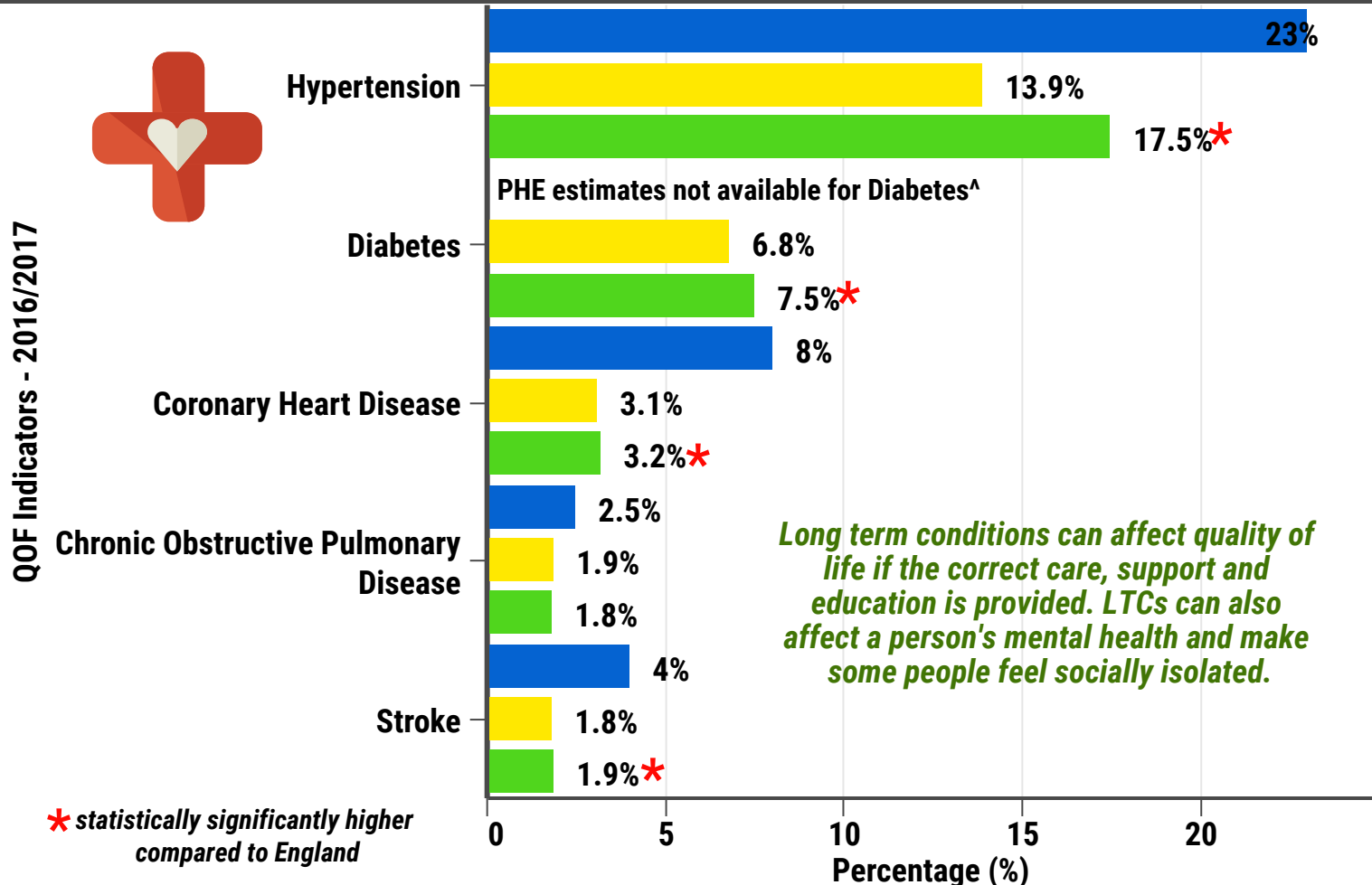
Little Thurrock Rectory Ward (E05002241)

Published by Thurrock Public Health
2017/18

 thurrock.gov.uk



Long Term Conditions 2016/17 (LTC)



- Balfour Medical Centre (% of practice adult population diagnosed and receiving treatment)
- England (% of practice adult population diagnosed and receiving treatment)
- PHE estimates^ for above practice (average % of adult population diagnosed and undiagnosed)

PHE Estimate numbers (combined all above GP Practices) of additional undiagnosed patients not receiving treatment^



Chronic Obstructive Pulmonary Disease - 39
Hypertension - 281
Coronary Heart Disease - 250
 Stroke - 109



Little Thurrock Rectory Ward (E05002241)

Published by Thurrock Public Health
2017/18

 thurrock.gov.uk



Pharmacies



Lloyds Pharmacy
31 Lodge Lane
Grays
RM17 5RY



Opening Times

Mon - Fri
9.00 - 7.00pm
Sat
9.00am - 5.30pm



*Source: Pharmaceutical Services
Negotiating Committee - PSNC*

GP Practices

**Balfour Medical
Centre**

.....
List Size-2,613
CQC - Good
(Jan 2017)
.....



**47% patients had same
day appointment**
(England Average 33%)

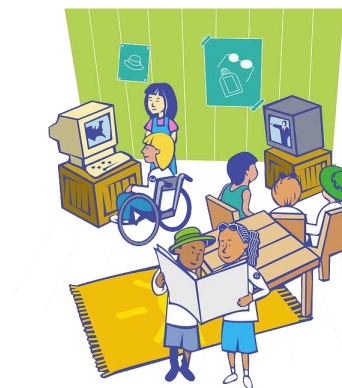
*Source: National GP Patient
Survey 2017 /NHS Choices*

Facilities in the community



Social Club

- **Social Eyes**



Source: Thurrock CVS - www.strongertogether.org.uk

Little Thurrock Rectory Ward (E05002241)

Published by Thurrock Public Health
2017/18

 thurrock.gov.uk



Your Place Your Voice



For more details on growth within Thurrock please visit - www.thurrock.gov.uk/planning-and-growth

Ward population - 6,067
Males - 2,969
Females - 3,098

One GP surgery
and one
pharmacy
within this ward

Smoking prevalence -
20.0% (statistically
significantly
higher than
England-18%)

Binge drinking
prevalence-18.3%
(not statistically
different from
England-20.0%)

Obesity (Adults)
prevalence-26.4%
(not statistically
different from
England-24.1%)

One school - Little
Thurrock Primary

Summary of Little Thurrock Rectory Ward

Little Thurrock
Rectory deprivation
rank: 16/20

Life
expectancy
from birth-
Male - 84yrs
Female - 85yrs

Crime rate
per 1,000
persons-22.91
(lower than the
Thurrock crime
rate of 47.62)

PHE models of
undiagnosed patients -
Hypertension - 281,
Coronary Heart Disease -
250, Chronic Obstructive
Pulmonary Disease - 39,
Stroke - 109

Childhood obesity
prevalence is 22.2%
(not statistically
different from
England-19.3%)

Unemployment
is lower,
compared to
Thurrock