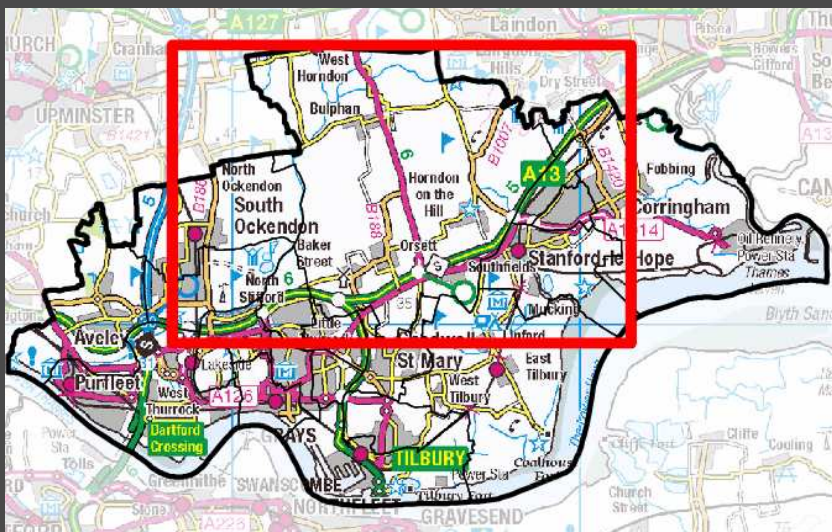


Orsett Ward (E05002240)

Published by Thurrock Public Health
2017/18

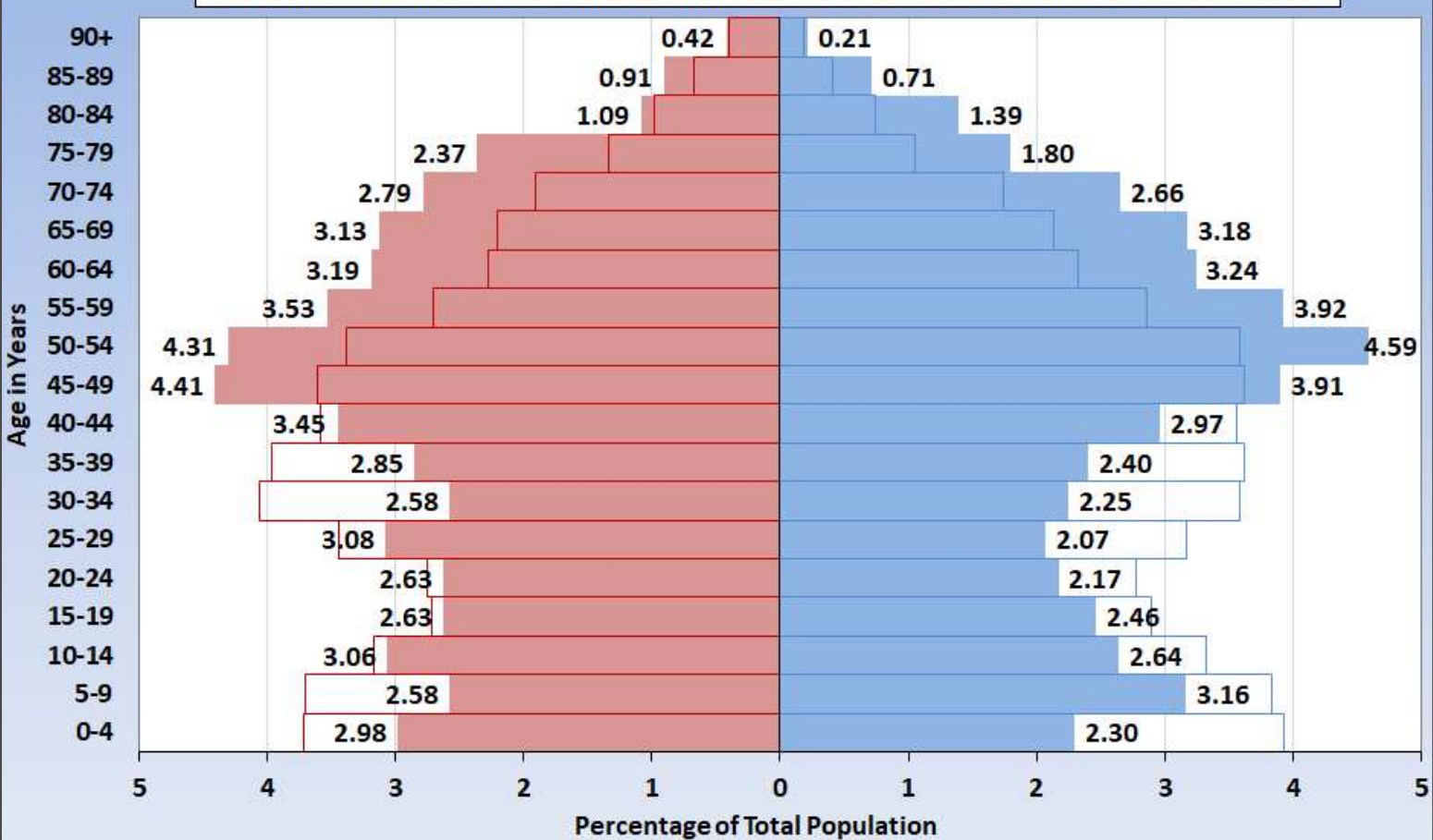
 thurrock.gov.uk



Population Pyramid

Orsett Population Pyramid, 2017

■ Thurrock Females(%)
 ■ Thurrock Males(%)
 ■ Orsett Females(%)
 ■ Orsett Males(%)



Orsett Ward has a greater percentage of adults aged 45-79yrs compared to Thurrock.

Conversely, there is a smaller proportion aged 0-39yr olds.

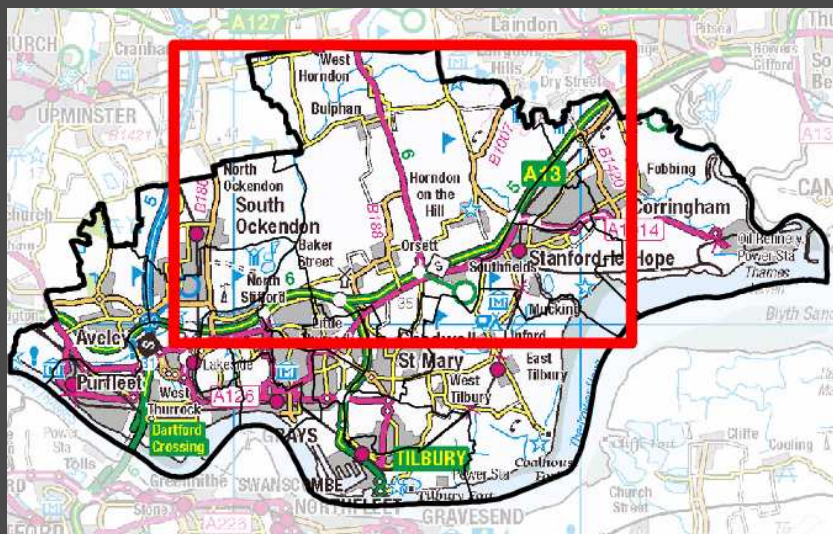
Source: ONS Mid-Year Estimates 2017



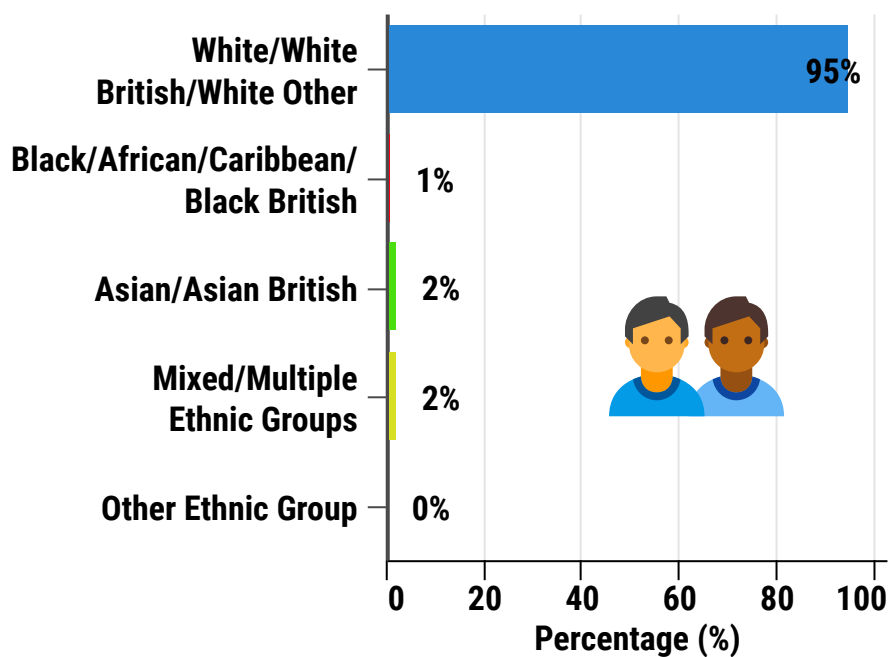
Orsett Ward (E05002240)

Published by Thurrock Public Health
2017/18

 thurrock.gov.uk



Ethnicity Groups (%)



Deprivation

Orsett is ranked 17th out of the 20 Thurrock wards

1 = Most Deprived
20 = Least Deprived

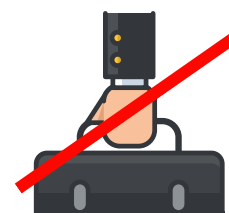


Deprivation is strongly associated with poor physical and mental health

Source: DCLG (Department of Communities and Local Government)

Employment

Employment Status	Orsett Ward (%)	Thurrock (%)
Employee: Full-time	40.6	42.3
Employee: Part-time	14.0	14.5
Self-employed	14.9	9.0
Unemployed	2.7	5.2
Retired	15.3	12.2
Looking after home or family	4.1	5.1
Long-term sick or disabled	1.7	3.4
Student (inc. full-time students)	2.7	3.5

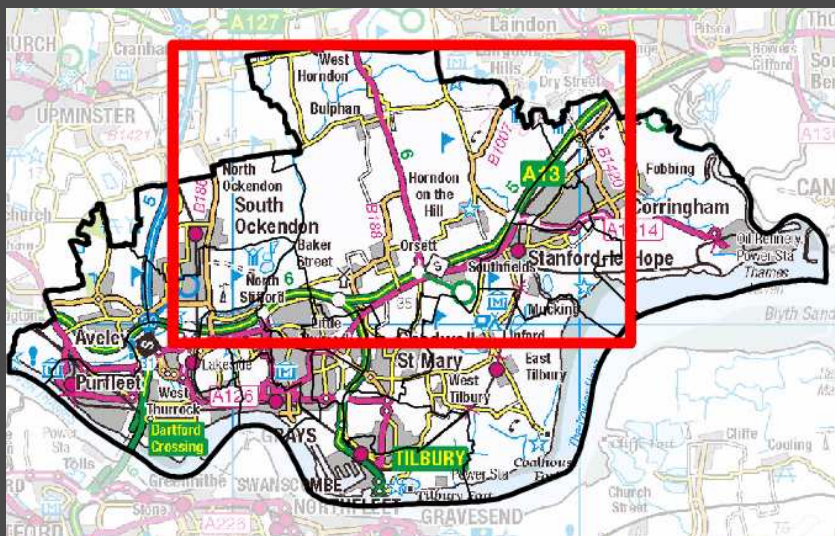


Being in employment has been shown to be highly protective to one's health.

Conversely, evidence shows that being unemployed is linked to poor physical and mental health outcomes.

Orsett Ward (E05002240)

Published by Thurrock Public Health
2017/18



Primary Schools (No Secondary Schools within this Ward)

Horndon-on-the-Hill CofE Primary School

Approx pupils - 251
Ofsted rating - Good



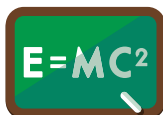
Orsett CofE Primary School

Approx pupils - 207
Ofsted rating - Good

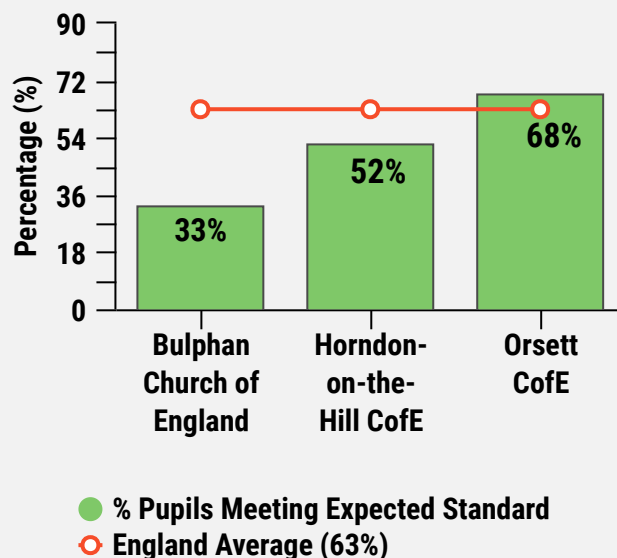


Bulphan CofE Primary School

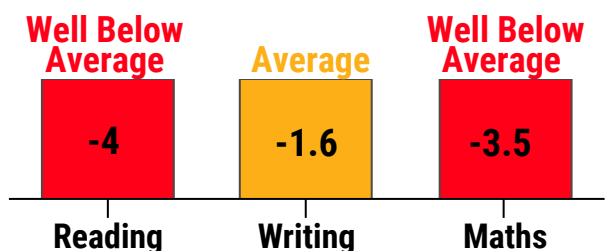
Approx pupils - 75
Ofsted rating - No Data



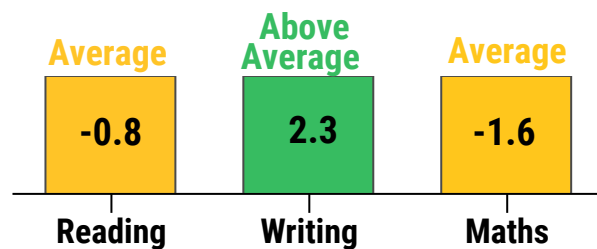
SATs Results 2017



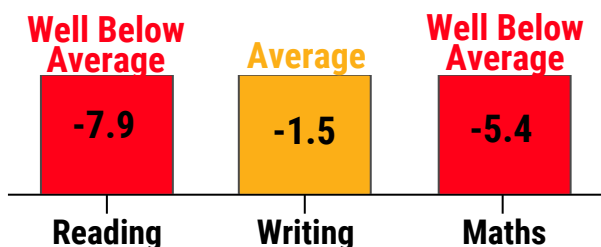
Government pupil progress score, comprises of key stage 1 assessments & key stage 2 tests, compared to pupils across England. Scoring range is -5 & +5, 0.0 being the average.



Horndon-on-the-Hill CofE Primary School



Orsett CofE Primary School



Bulphan CofE Academy

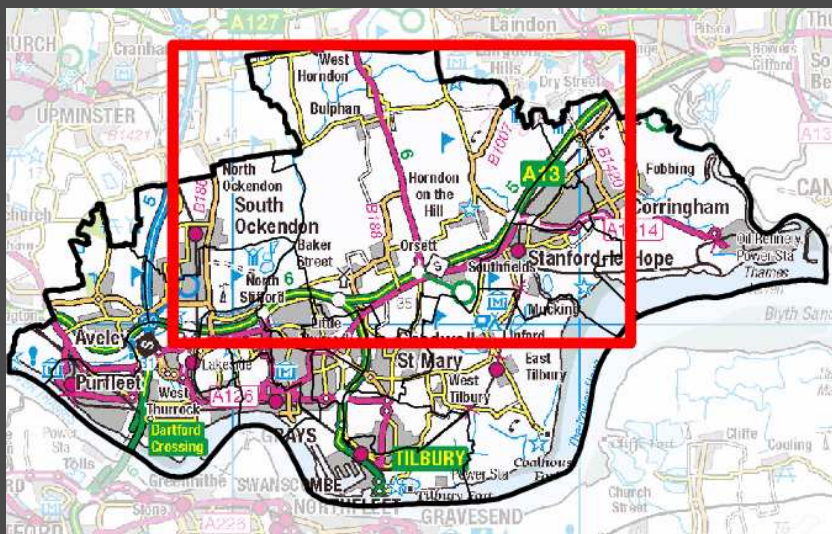


Educational achievement is strongly correlated with good health. Research demonstrates that people with high levels of educational achievement live longer and spend a smaller percentage of their life living with poor health.

Orsett Ward (E05002240)

Published by Thurrock Public Health
2017/18

 thurrock.gov.uk



Reported Crime 2016



Count of crimes Oct'16 to Sep'17 - 407

Crime rate per 1,000 persons - 29.05

Thurrock crime rate per 1,000 persons - 47.62

England crime rate per 1,000 persons- 149.58



Reported crime rates in Orsett ward are statistically significantly lower than England's.

Compared to Thurrock there is a lower crime rate within this Ward.

Source: www.ukcrimestats.com

Residents Views



88% of Orsett residents are satisfied with their local area where they live.

87% of Orsett residents feel safe going outside in their local area after dark.



Persons feeling unsafe and less satisfied within their area could lead to social isolation and impact negatively on physical/mental health.

Source: *Thurrock Council Residents Survey 2016*

Community Support

Local Area Coordinator (LAC)

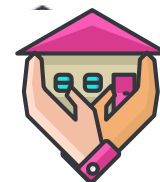
A local area coordinator connects individuals with support and assets within their local community.

Overview and examples of help can be found at
- www.thurrock.gov.uk/local-area-coordinators-help-in-community

Ward LACs - Kate Williams (Senior-East)
Pauline White

Mobile - 07789924209 & 07710950319

Email - Kxwilliams@thurrock.gov.uk
Pwhite@thurrock.gov.uk



Community Led Support (CLS)

A new approach to bring Adult Social Care into the community. CLS is being introduced initially in the Tilbury and Chadwell area.



Contact Thurrock First – 01375 511000
OR

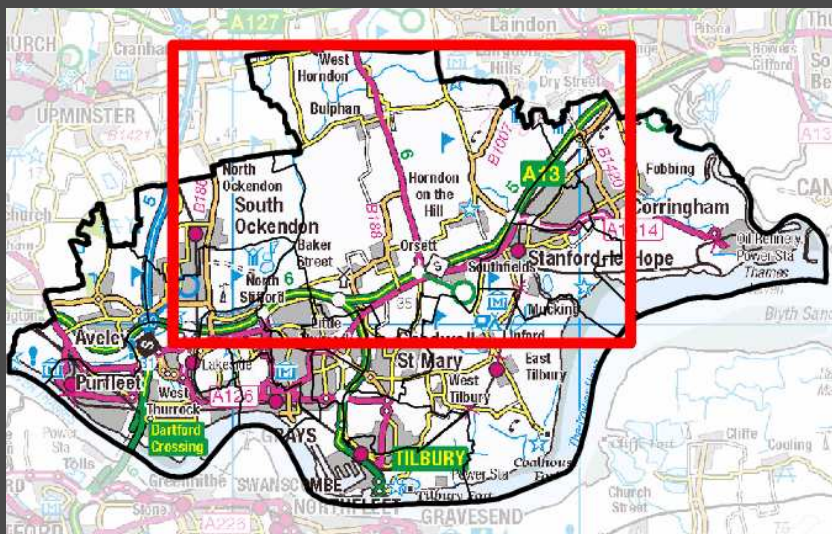
Pop along to one of the CLS 'Talking Shop' drop in sessions advertised via
www.strongertogether.org.uk

Source: *Thurrock Council Adult, Housing & Health*

Orsett Ward (E05002240)

Published by Thurrock Public Health
2017/18

 thurrock.gov.uk



● = Not statistically different

● = Statistically significantly different

Binge Drinking

Orsett Ward - 16.8%

England - 20.0%



(% of population 16+ that binge drink)

Binge drinking can increase blood pressure, affect mood and memory & longer term, can lead to mental and physical health issues.

Source - PHE Local Health (2006/08)

Smoking

Orsett Ward - 18.7%

England - 18%



(Prevalence of 18yrs+ self-reported smokers)

Smoking causes 84% of deaths from lung cancer & 83% of deaths from chronic obstructive pulmonary disease (COPD)

Source - ASH Ready Reckoner (2018)

Obesity (Adult)

Orsett Ward - 25.6%

England - 24.1%



(% of population aged 16+ with a BMI 30+)

Obesity causes high blood pressure, leading to strokes, high cholesterol, high blood sugar, and heart disease.

Source - PHE Local Health (2006/08)

Obesity (Child)

Orsett Ward - 18.9%

England - 19.3%



(% of children Yr 6 - overweight or obese)

Childhood obesity can lead to adult obesity & serious health issues including heart disease, type 2 diabetes, asthma, social discrimination, depression.

Source - PHE Local Health (2013/14-2015/16)

General Health



4% of persons reported that their general health was bad / very bad.

Conversely 84.5% of persons reported their general health as good / very good.



Life Expectancy at Birth



**Male - 81yrs
(England 79yrs)**



**Female - 84yrs
(England 83yrs)**

Life expectancy is a function of multiple elements including poor diet/lifestyle (excessive alcohol/drugs), environmental factors such as housing and air quality, educational attainment, deprivation and access to high quality of health services.

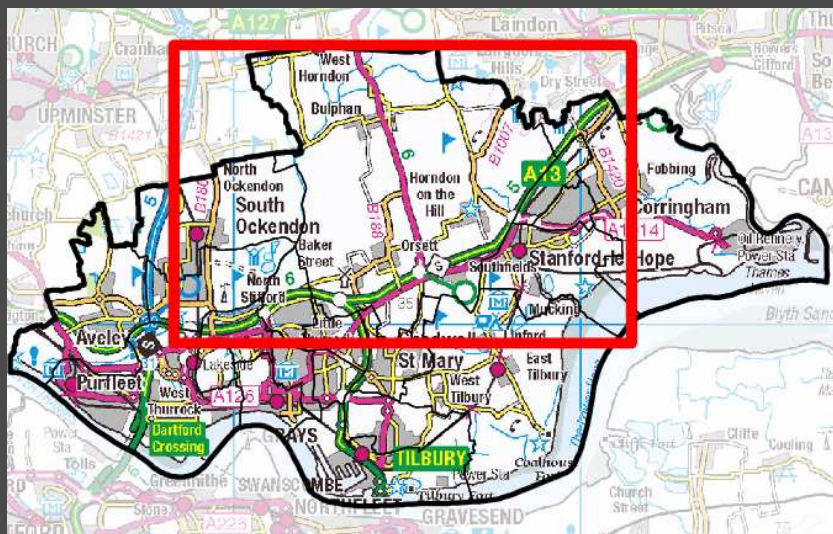
Source: PHE Local Health (2011-2015)

(Source for all data in this profile is Census 2011 unless otherwise stated)

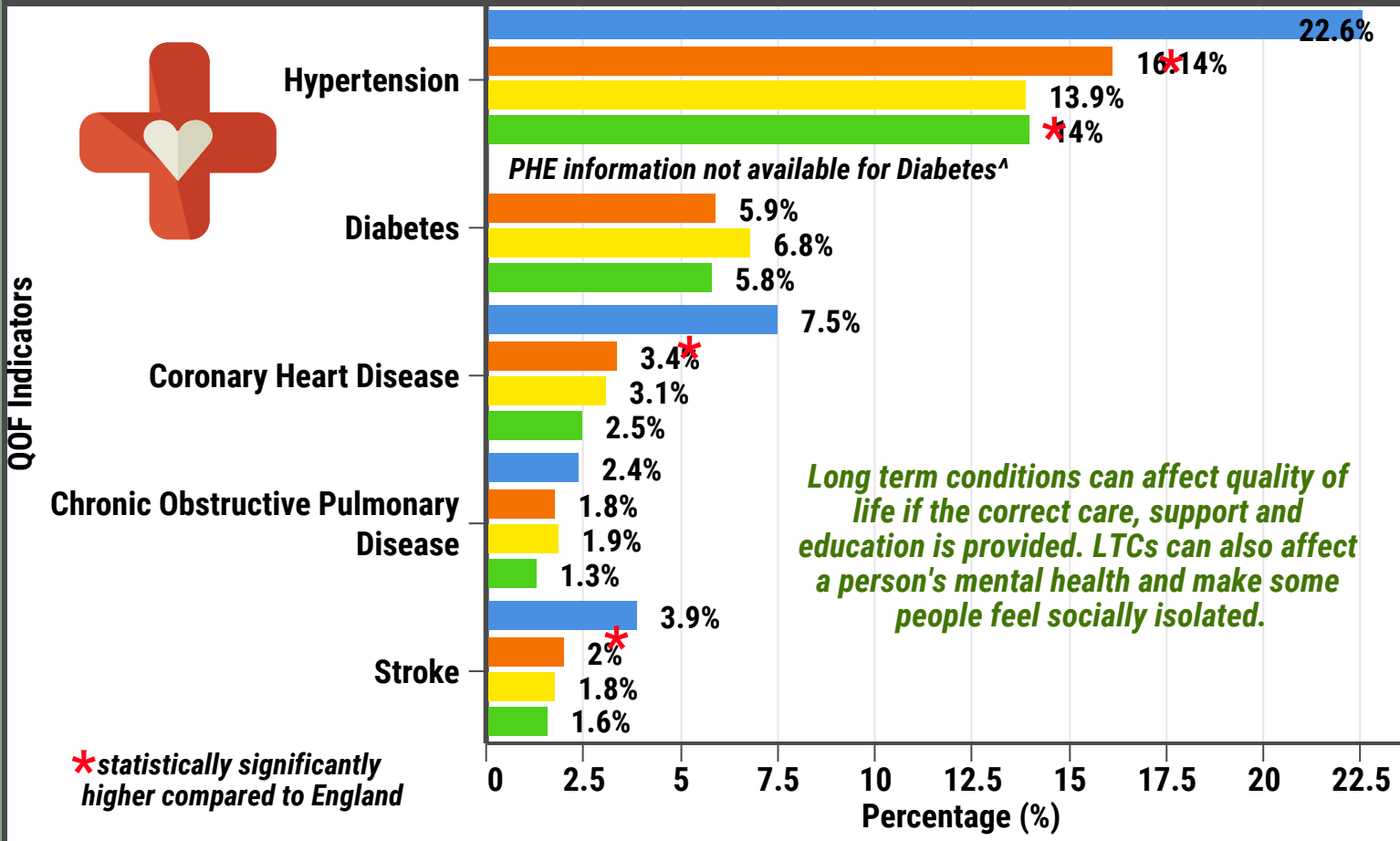
Orsett Ward (E05002240)

Published by Thurrock Public Health
2017/18

 thurrock.gov.uk



Long Term Conditions (LTC) 2017/18



- The Orsett Surgery (% of practice adult population diagnosed and receiving treatment)
- England (% of practice adult population diagnosed and receiving treatment)
- The Surgery (% of practice adult population diagnosed and receiving treatment)
- PHE estimates^ for above practices (average % of adult population diagnosed and undiagnosed)

PHE Estimate numbers (combined all above GP Practices) of additional undiagnosed patients not receiving treatment^



Chronic Obstructive Pulmonary Disease - 109
Hypertension - 845
Coronary Heart Disease - 504
 Stroke - 226 Diabetes - NA

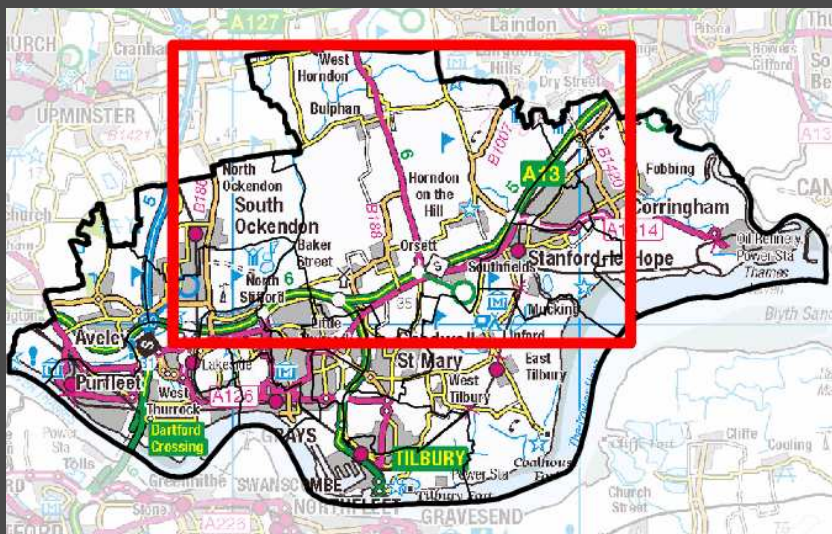


Source: Thurrock Public Health / PHE Estimated Models^ / QOF 2016-17

Orsett Ward (E05002240)

Published by Thurrock Public Health
2017/18

 thurrock.gov.uk



Pharmacies

South Road
1 South Road
South Ockendon

Mon-Tues
9-6pm



Wednesday
9-5.30pm

Thursday
9-5.30pm

Friday - Friday
9-6.30pm



*No pharmacies
within the Orsett
Ward, these
pharmacies are
within a two mile
radius.*

Well Pharmacy
16 Cramaville
Street, Grays

Mon-Tues
8.30-6.30pm

Sat
9-1pm



Hassengate
Southend Rd,
Stanford-le-Hope

Mon-Fri
8-10.30pm

Tues
7-10.30pm

Sat
8-10pm

Sun
9-10pm



Source: Local Pharmaceutical Committees (LPCs)

GP Practices

**Orsett
Surgery**



List Size-7,749
CQC - Good
(Mar 19)

43% patients
had same day
appointment
(England
Average 33%)

Source: National GP Patient Survey
2017 /NHS Choices

**The
Surgery**

List Size-2,775
CQC - Good
(July 2016)

25% patients
had same day
appointment
(England
Average 33%)



Facilities in the community



Community Groups

- Community Café - Bulphan
- Scouts - Bulphan
- Beavers - Bulphan
- Bulphan in Bloom
- Cubs - Bulphan

Community Buildings

- Bulphan Village Hall
- Orsett Village Hall
- Bulphan Village Hall

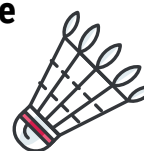


Church or Faith

- St Giles & All Saints Orsett Church
- Bulphan Church - St Mary the Virgin

Health & Sports Groups


- Orsett Surgery, GP
- Badminton - Womens Guild
- Indoor Bowls
- Chestermans Sequence Dancing
- Dance Pointe

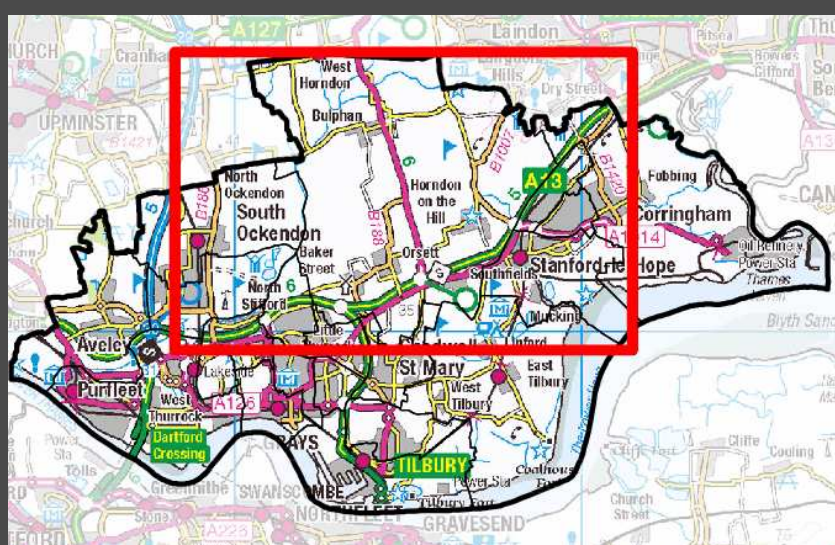


Source: Thurrock CVS - www.strongertogether.org.uk

Orsett Ward (E05002240)

Published by Thurrock Public Health
October 2018

 thurrock.gov.uk



Your Place Your Voice

YOUR ORSETT, YOUR VOICE PLACE STORYBOARD



For more details on growth within Thurrock please visit - www.thurrock.gov.uk/planning-and-growth

Ward population - 6,171
Males - 2,964
Females - 3,207

Three schools - Orsett CofE Primary School, Bulphan CofE Primary School, and Horndon-on-the-Hill CofE Primary School

Orsett deprivation rank: 17/20

Two GP surgeries and three pharmacies within a two mile radius

Life expectancy from birth- Male - 81yrs Female - 84yrs

Smoking prevalence-18.7% (significantly higher than England-18%)

Crime rate per 1,000 persons- 29.05 (lower than the Thurrock crime rate of 47.62)

Binge drinking prevalence-16.8% (not statistically different from England-20.0%)

PHE models of additional undiagnosed patients - Hypertension - 845, Coronary Heart Disease - 504, Chronic Obstructive Pulmonary Disease - 109, Stroke - 226

Obesity (Adults) prevalence-25.6% (not statistically different to England-24.1%)

Childhood obesity prevalence is 18.9% (not statistically different from England-19.3%)

Unemployment is lower, compared to Thurrock

Summary of Orsett Ward