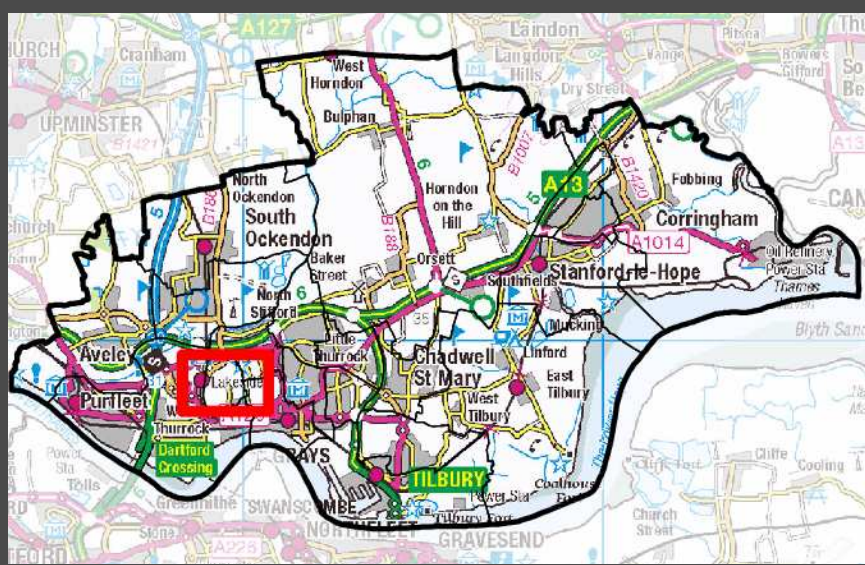


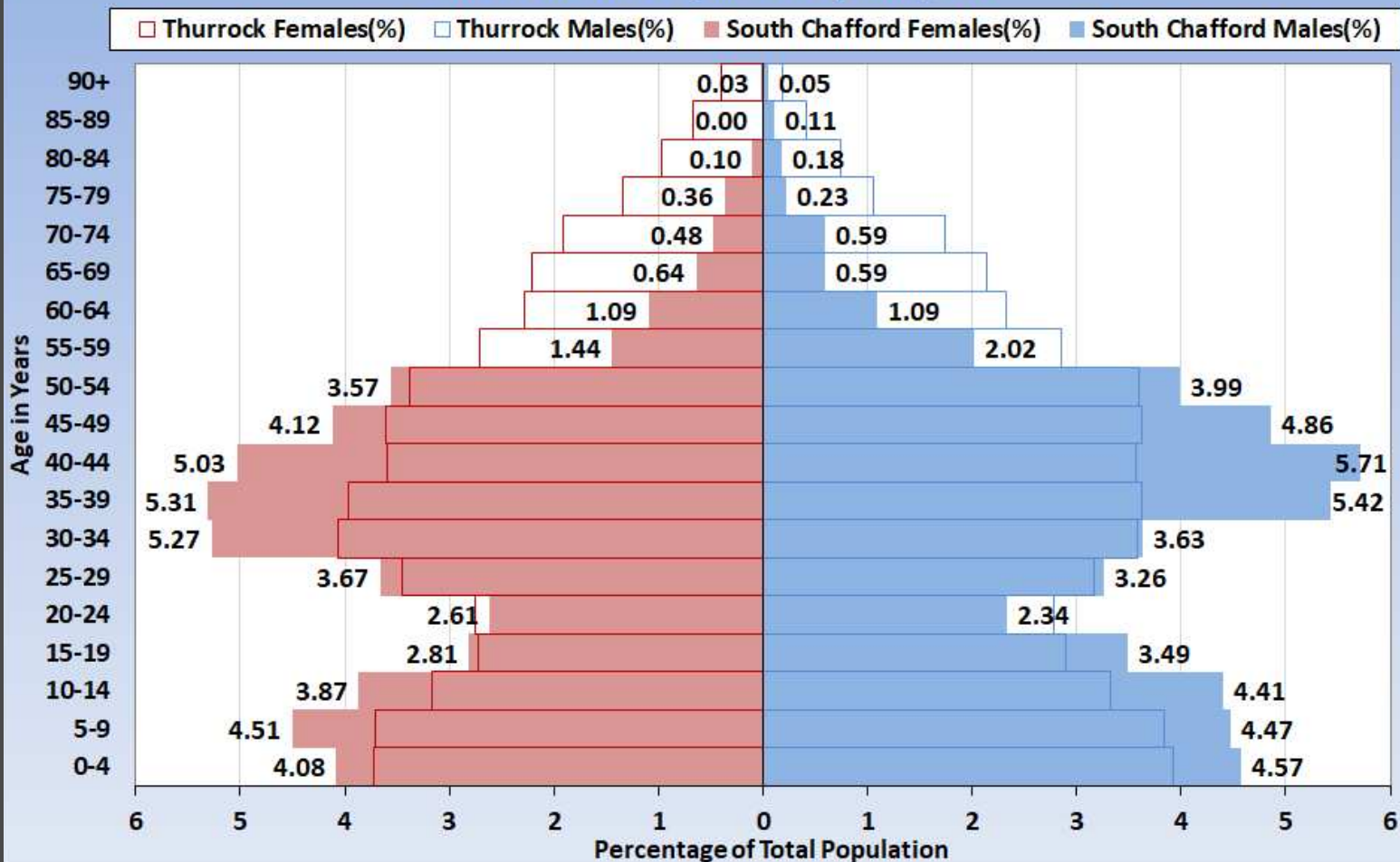
South Chafford Ward (E05002241)

Published by Thurrock Public Health
2017/18



Population Pyramid

South Chafford Population Pyramid, 2017



South Chafford Ward has a greater percentage of residents aged 0-14yrs and 30-49yr olds compared to Thurrock.

Conversely, there is a smaller proportion of 59+yr olds.

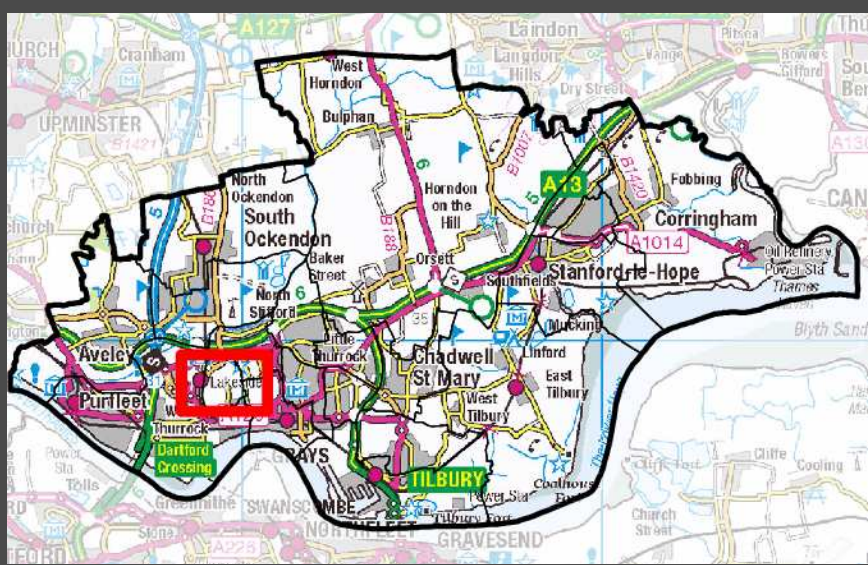
Source: ONS Mid-Year Estimates 2017



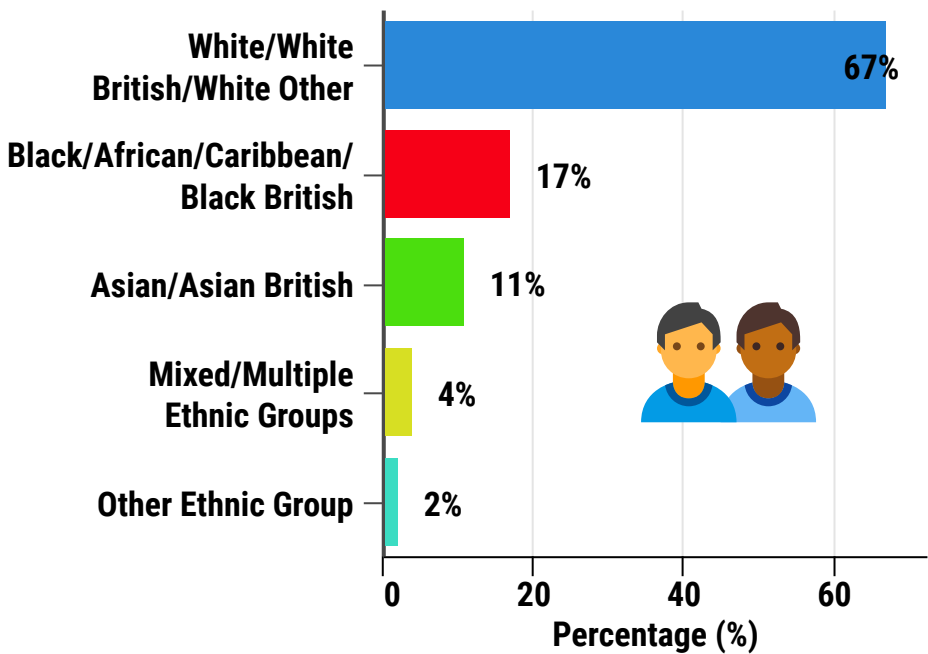
South Chafford Ward (E05002241)

Published by Thurrock Public Health
2017/18

 thurrock.gov.uk



Ethnicity Groups (%)



Deprivation

South Chafford is ranked 20th out of the 20 Thurrock wards

1 = Most Deprived
20 = Least Deprived

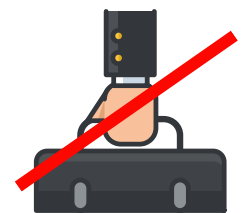


Deprivation is strongly associated with poor physical and mental health

Source: DCLG (Department of Communities and Local Government)

Employment

Employment Status	South Chafford Ward (%)	Thurrock (%)
Employee: Full-time	56.7	42.3
Employee: Part-time	12.5	14.5
Self-employed	9.8	9.0
Unemployed	3.6	5.2
Retired	3.1	12.2
Looking after home or family	5.2	5.1
Long-term sick or disabled	1.0	3.4
Student (inc. full-time students)	2.9	3.5



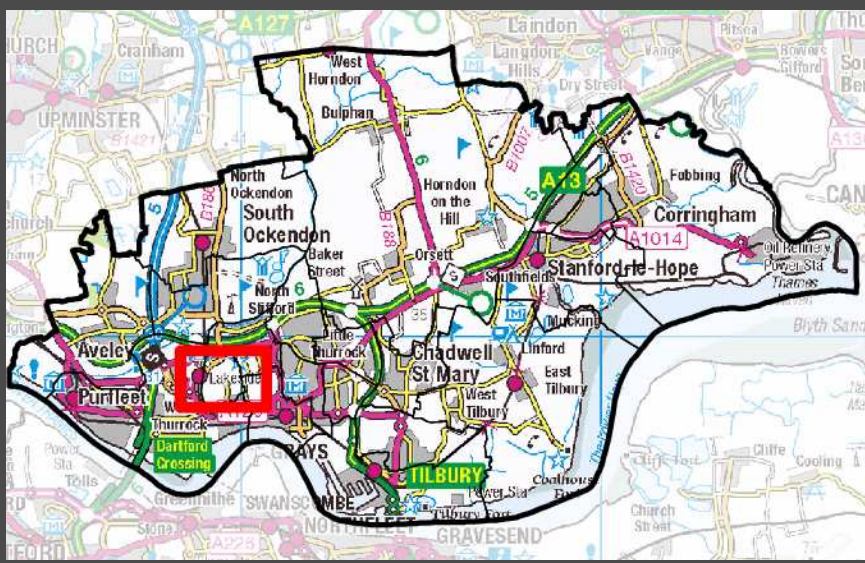
Being in employment has been shown to be highly protective to one's health.

Conversely, evidence shows that being unemployed is linked to poor physical and mental health outcomes.

South Chafford Ward (E05002241)

Published by Thurrock Public Health
2017/18

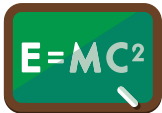
 thurrock.gov.uk



Primary Schools

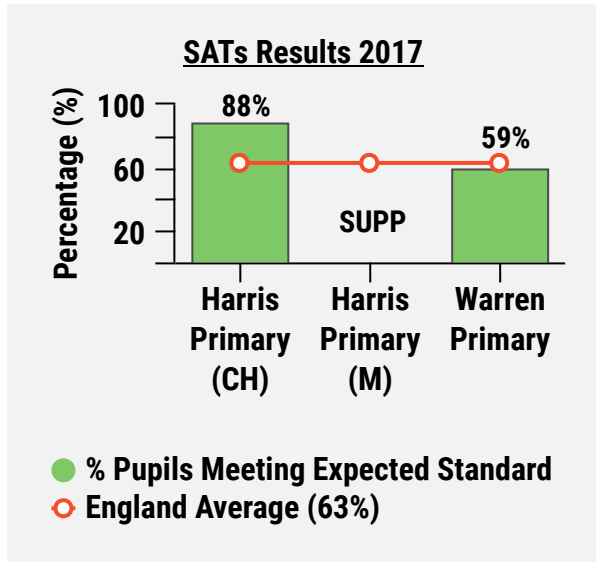
Harris Primary Academy Chafford Hundred

Approx pupils - 674
Ofsted rating - Outstanding



Harris Primary Academy Mayflower

Approx pupils - 467
Ofsted rating - Outstanding
SATs - Data Suppressed (SUPP)

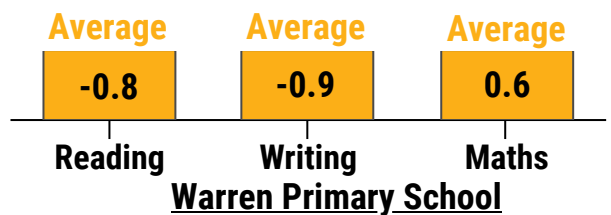
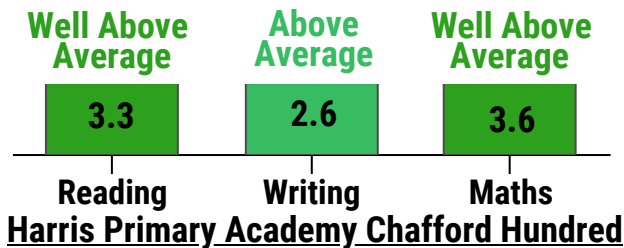


Warren Primary School

Approx pupils - 453
Ofsted rating - Good



Government pupil progress score, comprises of key stage 1 assessments & key stage 2 tests, compared to pupils across England. Scoring range is -5 & +5, 0.0 being the average.



Secondary Schools

Harris Academy Riverside

Approx pupils - 127
Ofsted rating - No rating available



Well Above Average

0.6

Progress 8 Measure

Harris Academy Chafford Hundred

Approx pupils - 1,305
Ofsted rating - Good

Government Progress 8 Measure, is made between the end of key stage 2 and the end of key stage 4, compared to pupils across England. Scoring range is -5 & +5, 0.0 being the average.

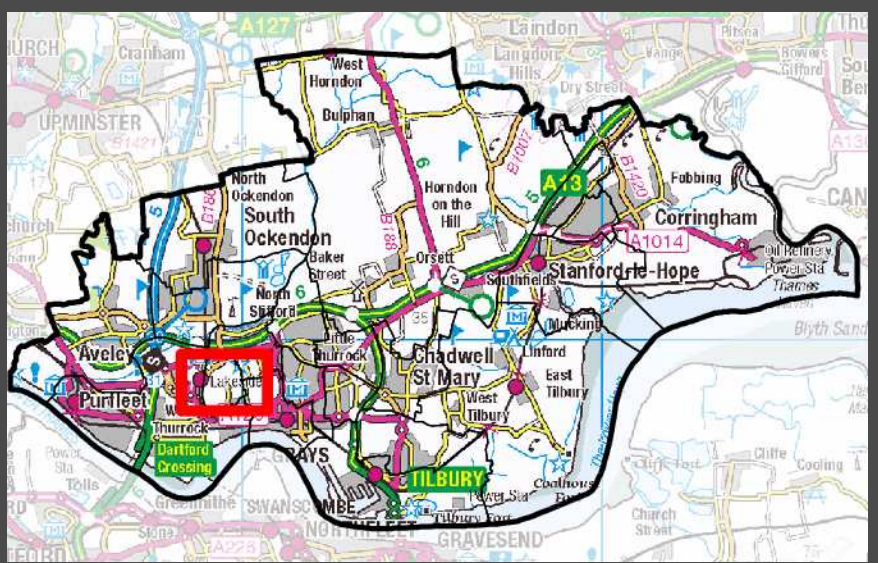
Educational achievement is strongly correlated with good health. Research demonstrates that people with high levels of educational achievement live longer and spend a smaller percentage of their lives living with poor health.

Source: www.compare-school-performance.service.gov.uk

South Chafford Ward (E05002241)

Published by Thurrock Public Health
2017/18

 thurrock.gov.uk



Reported Crime 2016



Count of crimes Oct'16 to Sep'17 - **426**

Crime rate per 1,000 persons - **30.40**

Thurrock crime rate per 1,000 persons - **47.62**

England crime rate per 1,000 persons - **149.58**



Reported crime rates in South Chafford ward are statistically significantly lower than England's. Compared to Thurrock there is a lower crime rate within this Ward.

Source: www.ukcrimestats.com

Residents Views



81% of South Chafford residents are satisfied with their local area where they live.

68% of South Chafford residents feel safe going outside in their local area after dark.



Persons feeling unsafe and less satisfied within their area could lead to social isolation and impact negatively on physical/mental health.

Source: *Thurrock Council Residents Survey 2016*

Community Support

Local Area Coordinator (LAC)

A local area coordinator connects individuals with support and assets within their local community.

Overview and examples of help can be found at
- www.thurrock.gov.uk/local-area-coordinators-help-in-community

Ward LAC - Christine Searle
Mobile - 07714 488 318
Email - CSearle@thurrock.gov.uk



Community Led Support (CLS)

A new approach to bring Adult Social Care into the community. CLS is being introduced initially in the Tilbury and Chadwell area.



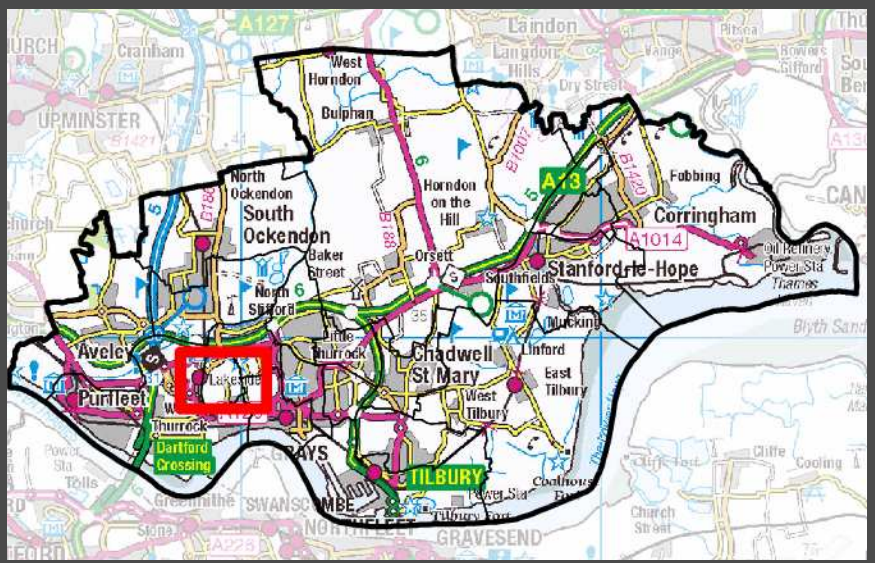
Contact Thurrock First – 01375 511000
OR
Pop along to one of the CLS 'Talking Shop' drop in sessions advertised via
www.strongertogether.org.uk

Source: *Thurrock Council Adult, Housing & Health*

South Chafford Ward (E05002241)

Published by Thurrock Public Health
2017/18

 thurrock.gov.uk



● = Not statistically different

● = Statistically significantly different

Binge Drinking

South Chafford Ward - 17.5%

England - 20.0%



(% of population 16+ that binge drink)

Binge drinking can increase blood pressure, affect mood and memory & longer term, can lead to mental and physical health issues.

Source - PHE Local Health (2006/08)

Smoking

South Chafford Ward - 20.3%

England - 18%



(Prevalence of 18yrs+ self-reported smoker)

Smoking causes 84% of deaths from lung cancer & 83% of deaths from chronic obstructive pulmonary disease (COPD)

Source - ASH Ready Reckoner (2018)

Obesity (Adult)

South Chafford Ward - 24.5%

England - 24.1%



(% of population aged 16+ with a BMI 30+)

Obesity causes high blood pressure, leading to strokes, high cholesterol, high blood sugar, and heart disease.

Source - PHE Local Health (2006/08)

Obesity (Child)

South Chafford Ward - 18.5%

England - 19.3%



(% of children Yr 6 - overweight or obese)

Childhood obesity can lead to adult obesity & serious health issues including heart disease, type 2 diabetes, asthma, social discrimination, depression.

Source - PHE Local Health (2013/14-2015/16)

General Health



1.2% of persons reported that their general health was bad / very bad.

Conversely 93.9% of persons reported their general health as good / very good.



Life Expectancy at Birth



Male - No Data
(England 79yrs)



Female - 84yrs
(England 83yrs)

Life expectancy is a function of multiple elements including poor diet/lifestyle (excessive alcohol/drugs), environmental factors such as housing and air quality, educational attainment, deprivation and access to high quality of health services.

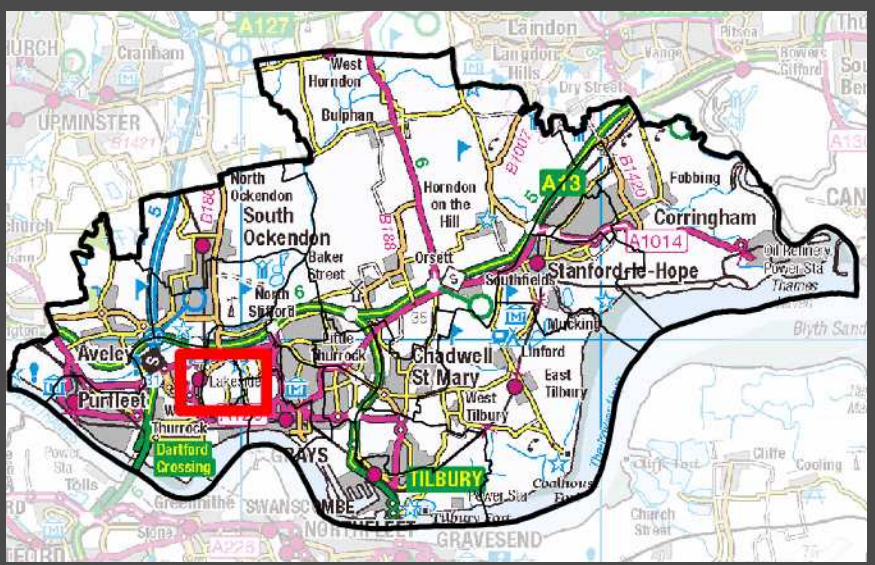
Source: PHE Local Health (2011-2015)

(Source for all data in this profile is Census 2011 unless otherwise stated)

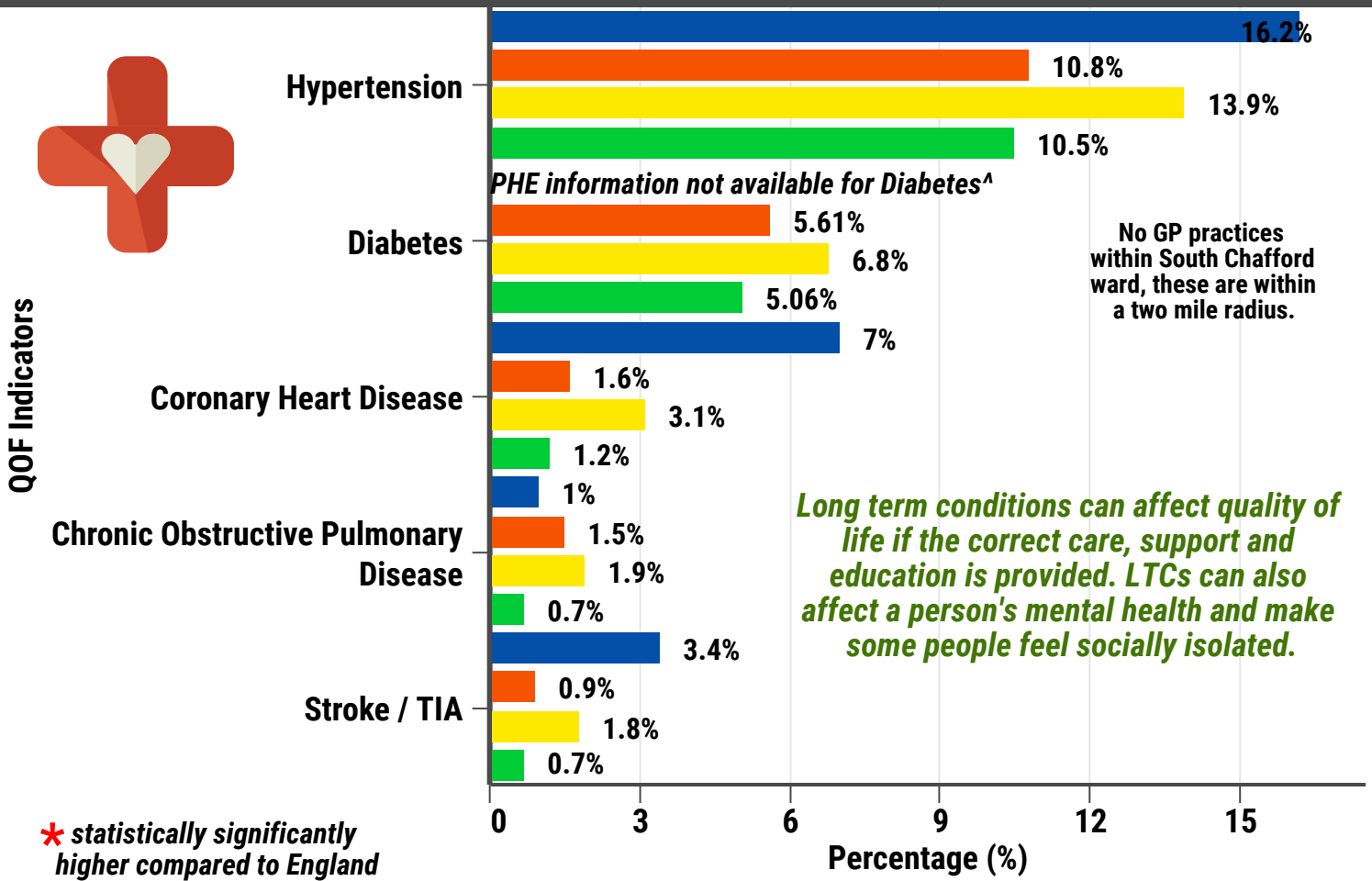
South Chafford Ward (E05002241)

Published by Thurrock Public Health
2017/18

 thurrock.gov.uk



Long Term Conditions (LTC) 2017/18



- Chafford hundred Medical Centre (% of practice adult population diagnosed and receiving treatment)
- England (% of practice adult population diagnosed and receiving treatment)
- Oddfellows Hall & St Clements Health Centre (% of practice adult population diagnosed and receiving treatment)
- PHE estimates^A for above practices (average % of adult population diagnosed and undiagnosed)

PHE estimate numbers (combined all above GP practises) of additional (*-* states an over diagnosis) undiagnosed patients not receiving treatment^A



Chronic Obstructive Pulmonary Disease *-* 13
Stroke - 692
Hypertension - 1,502
Diabetes - NA
Coronary Heart Disease - 1,492

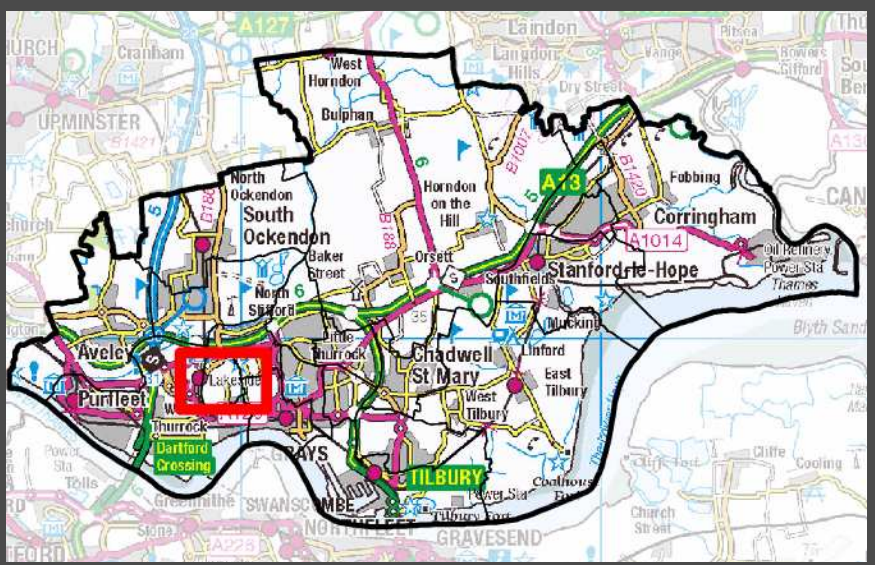


Source: Thurrock's Public Health / PHE Estimated Models^A / QOF 2016-17

South Chafford Ward (E05002241)

Published by Thurrock Public Health
2017/18

 thurrock.gov.uk



Pharmacies



Lloyds Pharmacy
Chafford Hundred
RM16 6QQ



Opening Times
Mon - Tues
8.30 - 11.30pm
Wed - Sun
8.30am - 10.30pm



Source: Local Pharmaceutical
Committees (LPCs)

GP Practices

**Chafford Hundred
Medical Centre**

.....
List Size - 15,580
CQC - Requires
Improvement (2016)

.....
50% patients
had same day
appointment
(England
Average 33%)



**OddFellows & St
Clements Health
Centre**

.....
List Size - 11,197
CQC - Good (2019)

.....
24% patients
had same day
appointment
(England
Average 33%)



*No GP practices within South Chafford ward,
these are within a two mile radius.*

Source: National GP Patient Survey 2018 /NHS Choices

Facilities in the community

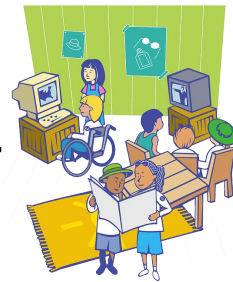


Community Groups

- Buggy Walk
- Rhyme and Time
- Stay and Play

Social Groups

- Bingo
- Knit & Natter
- Bowling



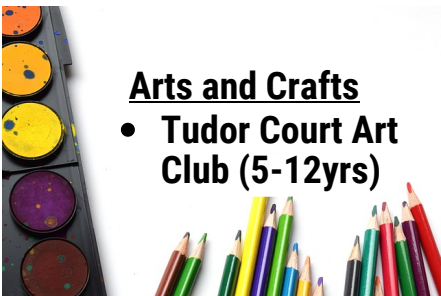
Community Buildings

- The Beacon Centre
- Drake Community Centre



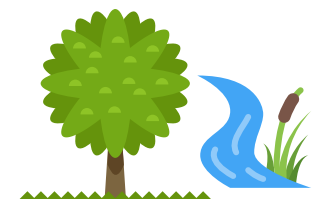
Arts and Crafts

- Tudor Court Art
Club (5-12yrs)



Health & Sports Groups

- Chafford Hundred
Nature Reserve

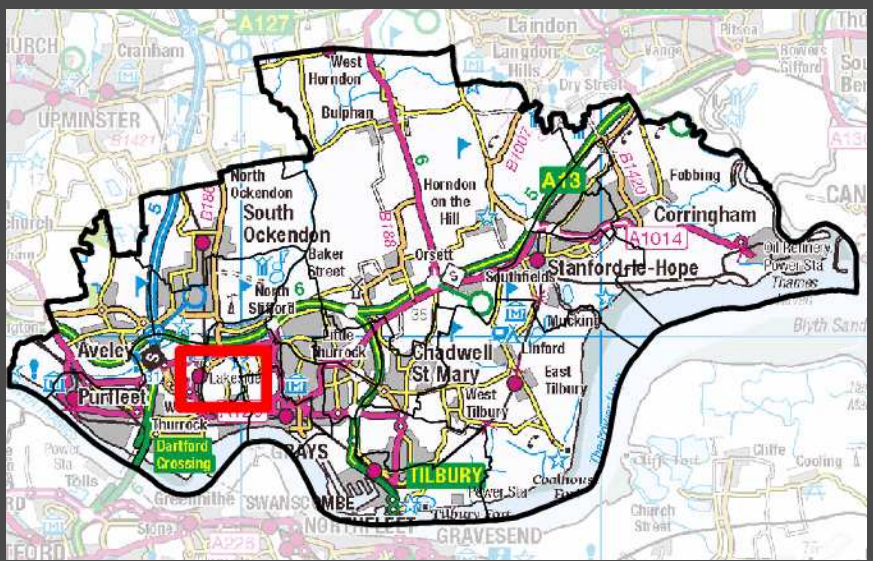


Source: Thurrock CVS -
www.strongertogether.org.uk

South Chafford Ward (E05002241)

Published by Thurrock Public Health
2017/18

 thurrock.gov.uk



Your Place Your Voice



For more details on growth within Thurrock please visit - www.thurrock.gov.uk/planning-and-growth

Ward population - 7,965
Males - 4,063
Females - 3,902

One pharmacy
and two
GP surgeries
within
this ward

Smoking
prevalence-20.3%
(significantly
higher than
England-18%)

Binge drinking
prevalence-17.5%
(not statistically
different from
England-20.3%)

Obesity (Adults)
prevalence-24.5%
(not statistically
different from
England-24.1%)

Three schools - Harris
Primary Academy Chafford
Hundred, Harris Primary
Academy Mayflower,
Warren, Harris Academy
Riverside

Summary of South Chafford Ward

Childhood obesity
prevalence-18.5%
(not statistically
different from
England-19.3%)

South Chafford
deprivation rank:
20/20

Life
expectancy
from birth -
Male - no data
Female - 84yrs

Crime rate
per 1,000
persons- 30.4
(lower than the
Thurrock crime
rate of 47.62)

PHE models of
undiagnosed patients -
Hypertension - 1,195,
Coronary Heart Disease -
1,085, Chronic Obstructive
Pulmonary Disease -42,
Stroke - 523

Unemployment
is lower,
compared to
Thurrock