

PUPIL PLACE PLAN

2019-2023



Table of Contents

INTRODUCTION	2
PUPIL PLACE PLANNING (PPP).....	3
CONTEXT	4
SCHOOLS AND PLANNING AREAS	6
PRIMARY FORECASTS	9
SECONDARY FORECASTS	21
COUNCIL WIDE ISSUES.....	28
ANNEX 1: PUPIL PLACE FORECASTING METHODOLOGY	29
ANNEX 2: SPECIAL EDUCATIONAL NEEDS AND DISABILITY (SEND)	31
ANNEX 3: PROVISION FOR PUPILS OUT OF SCHOOL.....	33
ANNEX 4: POST 16 PROVISION.....	34
ANNEX 5: MAP PRIMARY PHASE PLANNING AREAS.....	36
ANNEX 6: MAP SECONDARY PHASE PLANNING AREAS	37
ANNEX 7: PRIMARY FORECAST RECEPTION.....	38
ANNEX 8: PRIMARY FORECAST WHOLE SCHOOL	40
ANNEX 9: SECONDARY FORECAST YEAR 7	42
ANNEX 10: SECONDARY FORECAST WHOLE SCHOOL.....	43

**For the purpose of this document, data has been extracted from the
Autumn 2018 Census**

INTRODUCTION

Thurrock has some very exciting regeneration programmes and we are committed to ensuring that we have high quality educational opportunities for our children and young people.

Our Pupil Place Planning (PPP) document has been widely used by stakeholders such as developers, and educational providers. The forecasts contained in this document are also used to inform the schools' capital programme and to date we have delivered a range of high quality projects that contributes to ensuring the delivery of good educational outcomes for the children and young people of Thurrock.

This data has allowed us to review trend data on pupil numbers which helps with future forecasting, we currently have 17,038 Primary Pupils and 9,749 Secondary Pupils. Thurrock continues to be a place of choice for families wishing to move into the area and this can be seen from the numbers of children and young people requiring a school place.

Thurrock has strong working relationships with our schools and academies and this allows us to work in partnership with them when identifying locations where we can build in additional capacity for additional places. The Council is committed to ensuring that we have clear processes in the decision making around meeting local demand for school places.

We hope that this document continues to be of interest to all stakeholders and that the content is both useful and clear.

Name: Michele Lucas.

Title: Assistant Director Education & Skills

June 2019.

PUPIL PLACE PLANNING (PPP)

Over the last 7 years we have continued to see an increase in the primary population. The 2015/16 birth data is still the highest Thurrock has had at 2,505 with the two years either side of that just fractionally below the 2,500 and the current Year 2 is the highest cohort we have had at 2,541. The last three years average of birth data is 2,487. After reaching a peak of 2,505 births in 2015/16 we are now seeing a slight decline. Our primary cohort average is now 2,434 per year group, 2 new Secondary Free Schools should ease the pressure on secondary places as the primary cohort moves through. Thurrock is also getting a new Special Free School. The PPP document covers education for children in the age range of 4 – 16. Post 16 provision information is contained in Annex 4.

Special Educational Needs and Disability (SEND) educational provision and Early Years and Childcare provision are undertaken by other specialist areas within Thurrock Council and are not covered in this document.

Thurrock Council has a statutory responsibility to provide a school place for every child of school age who live in Thurrock. PPP is very complicated to predict with many factors dictating the outcome. Planning for school places begins with the acquisition of birth data which identifies the number of children that are born and the post code they live in and it is assumed that 4 years later they will enter the school system in a local school. There are a number of factors that are forever changing and need to be considered. In-year admissions, where children come into Thurrock mid-year (outside the normal admission rounds) are very difficult to foresee and project. Numbers of children that have moved into Thurrock from elsewhere in the country and those that have moved in from other countries can be seen in Annex 1.

Thurrock's forecasting for school places to date has been robust and accurate. The difficulty with forecasting is that although forecasts are accurate we are not able to identify how old the children will be that move into Thurrock and to what year group they will be applying for. This takes close monitoring and we need to be in a position at times to take swift action in opening up classes within certain year groups. Every effort is made to seek and offer a school place within reasonable travelling distance from the pupil's home.

Thurrock calculates the pupil yield from housing developments and then adds this to the projected pupil numbers. Thurrock currently does not project any child yield from a one bedroomed flat but the current economic climate suggest that this is now not so. Families moving in with other families make projecting pupil numbers now more difficult to predict the demand at local school level.

We are committed to ensuring that parental choice and an environment built on strong partnership foundations provides healthy competition across both primary, secondary and post 16 provision.

CONTEXT

Under the banner **People, Place, Prosperity**, Thurrock Council is creating a place where people and businesses want to stay and thrive and developers and investors want to invest.

Investment in infrastructure for the benefit of residents and local businesses is key. Good roads, health services, schools and leisure facilities are all required to enable people to work and play, live and stay in the borough.

Situated on the north side of the River Thames bordering Essex, Kent and East London, Thurrock is an area of great contrast and unique opportunities and is a crucial strategic player in the South East Local Enterprise Partnership, South Essex 2050 partnership and the Thames Estuary plans.

Thurrock has a well-balanced mix of beauty and business with £20 billion investment planned for homes, jobs and infrastructure, including £6 billion being invested in private sector jobs.

Rural villages and market towns are set into the 70% of the borough which is green belt. Nature reserves, heritage locations and sites of special scientific interest abound.

Three international ports punctuate 18 miles of riverfront with cranes and gigantic container ships, while industrial parks line the A13, all within driving distance of the major London airports. Indeed, Thurrock is probably more important strategically to London than the London boroughs themselves as through our ports the capital is fed, fuelled and clothed.

There has been a lot of talk about plans in the past but there is now a step-change to actual delivery – some master plans are agreed, with contractors on-site and work is beginning.

Thurrock has a growing population – predicted to rise by approximately 10% every decade. The ethnic profile of Thurrock has become increasingly diverse over the last decade. Both the age and ethnic profiles change significantly between the 20 wards.

Together with partners, Thurrock Council is investing more than £70 million to create over 350 new school places across the borough in the coming years.

We are working towards a future where every resident has a job – 24,500 new jobs are planned over 20 years - with better educated children and skilled residents who can access local and national employment opportunities.

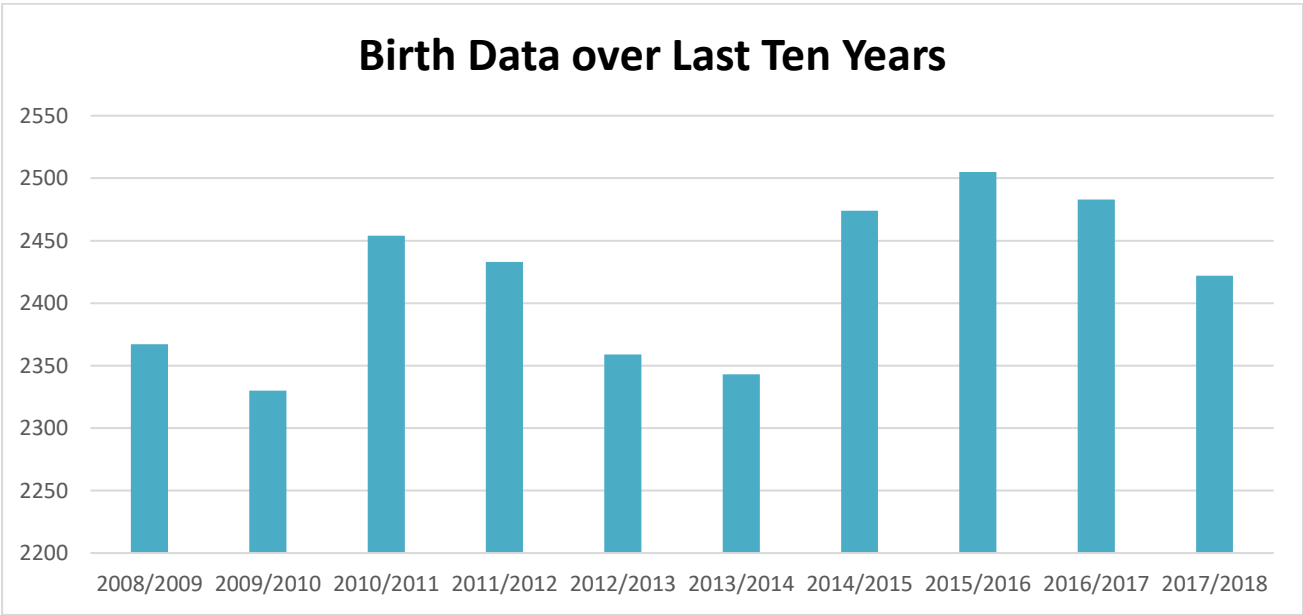
There are plans for four Integrated Medical Centres in the borough. This is just one of a series of game-changing initiatives being delivered with our health partners.

Thurrock is a place with a rich cultural heritage, which is often overlooked. With our cultural partners we are developing plans to enable all Thurrock residents to enjoy and benefit from high quality arts and heritage activity, creating a strong pride in place, better well-being and economic prosperity.

The table below demonstrates the conversion of live births in Thurrock to the actual take up of school places. This is showing a slight increase in reception numbers. This data enables Thurrock to project the place requirements for future years using the birth data available.

Year of Birth	2006-07	2007-08	2008-09	2009-10	2010-11	2011-12	2012-13	2013/14
Number of live births in the authority	2,241	2,261	2,367	2,330	2,454	2,433	2,359	2,343
Year entering school at 4+	2011-12	2012-13	2013-14	2014-15	2015-16	2016-17	2017-18	2018-19
Number of children admitted into reception	2,237	2,263	2,321	2,277	2,430	2,463	2,407	2,390
Historical uptake factor	99.82%	100.09%	98.06%	97.73%	99.02%	101.23%	102.03%	102.01%

The graph below highlights that Thurrock’s live births after reaching a peak of 2,505 in 2015/16 are now seeing a slight decrease.



SCHOOLS AND PLANNING AREAS

Schools

There are currently 39 Primary schools in Thurrock and 11 Secondary schools as detailed in the table below:-

	Academies	Community Schools	Voluntary Aided Schools	Voluntary Controlled	Foundation	Free School
Primary Schools	34	2	1	0	0	2
Secondary Schools	10	0	1	0	0	0

Full details of the schools and the oversubscription criteria applied to each one is available within the Council’s School Admissions Primary and Secondary Booklets which can be found at <https://www.thurrock.gov.uk/school-admissions>. These booklets contain information on how to make an application for a school place.

Each Academy, Free School and Voluntary Aided-School is its own Admissions Authority. The Council is the Admissions Authority for Community Schools and Voluntary Controlled Schools. In respect of Voluntary Aided Schools the governing body of the school determines admission arrangements. For Academies and Free Schools, the relevant Academy Trust is the Admission Authority. Each individual Admissions Authority applies its own oversubscription criteria to applications and determines which applicants to offer places to.

Applications for Thurrock Schools are made via the co-ordinated admissions process which is administered by the Council.

PUPIL PLACE PLANNING AREAS

Thurrock Council has 8 schools planning areas, 5 for Primary and 3 for Secondary.

The Primary planning areas are detailed in the table below:-

Primary Planning Areas

<p style="text-align: center;">Aveley, Ockendon and Purfleet</p> <ul style="list-style-type: none"> • Aveley Primary • Benyon Primary • Bonnygate Primary • Dilkes Academy • Holy Cross Catholic Primary • Kenningtons Primary Academy • Purfleet Primary Academy • Shaw Primary Academy • Somers Heath Primary 	<p style="text-align: center;">Grays</p> <ul style="list-style-type: none"> • Belmont Castle Academy • Deneholm Primary • Harris Primary Academy Chafford Hundred • Harris Primary Academy Mayflower • Little Thurrock Primary • Quarry Hill Academy • St Thomas of Canterbury Catholic Primary • Stifford Clays Primary • Thameside Primary • Tudor Court Primary • Warren Primary • West Thurrock Academy
<p style="text-align: center;">Tilbury</p> <ul style="list-style-type: none"> • Chadwell St Mary Primary • East Tilbury Primary & Nursery • The Gateway Primary Free • Herringham Primary Academy • Lansdowne Primary Academy • St Mary’s Catholic Primary • Tilbury Pioneer Academy • Woodside Academy 	<p style="text-align: center;">Corringham and Stanford-Le-Hope</p> <ul style="list-style-type: none"> • Abbots Hall Primary Academy • Arthur Bugler Primary • ORTU Corringham Primary • Giffards Primary • Graham James Primary Academy • St Joseph’s Catholic Primary • Stanford-le-Hope Primary
<p style="text-align: center;">Rural areas</p> <ul style="list-style-type: none"> • Bulphan C of E Academy • Horndon on the Hill C of E Primary • Orsett C of E Primary Academy 	

The planning areas for the Primary phase are shown on the map in Annex 5. The Primary reception forecast summary is shown in Annex 7.

The Primary phase forecast whole school summary is shown in Annex 8.

The Secondary planning areas are detailed in the table below:-

Secondary Planning Areas

<p>West</p> <ul style="list-style-type: none"> • Harris Academy Ockendon • Ormiston Park Academy • Harris Academy Riverside 	<p>Central</p> <ul style="list-style-type: none"> • The Gateway Academy • Grays Convent High School • The Hathaway Academy • Harris Academy Chafford Hundred • William Edwards School
<p>East</p> <ul style="list-style-type: none"> • ORTU Gable Hall • ORTU Hassenbrook Academy • St Clere’s School 	

The planning areas for the Secondary phase are shown on the map in Annex 6.

The Secondary Year 7 summary forecast is shown in Annex 9.

The Secondary phase whole school summary forecast is shown in Annex 10.

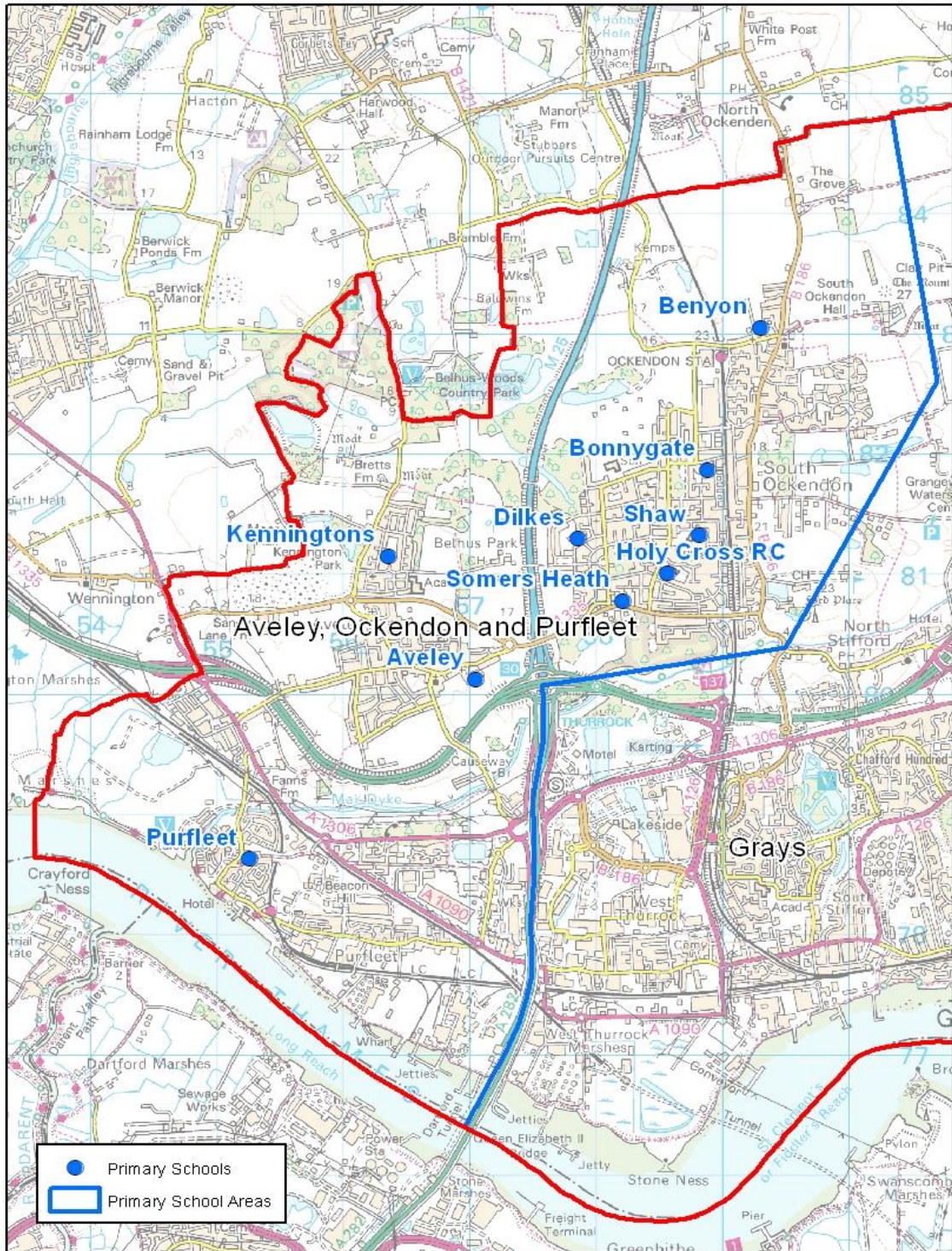
PRIMARY FORECASTS

Pupil place projections for each of the planning areas are set out in the following pages.

Reception intake September 2019 will be the first year of our highest birth rate, therefore it is predicted that the next three years will show an increase in a reception intake and subsequent year groups.

The whole school projections for each primary school planning area have been calculated using birth data which in recent years was showing an increase five years later when pupils reach school age. These are projected to calculate reception numbers along with the actual number of children on roll in the schools in the October 2018 census, adding the pupil yield from housing developments and then adding an additional element of places to cater for in-year admissions. This degree of additional places is required to enable schools to absorb the number of pupils we anticipate will arrive in Thurrock from elsewhere in the UK and abroad in the September 2019/20 academic year and beyond. The impact of inward migration will be closely monitored and forecasts adjusted accordingly.

Full details of the methodology used to determine the pupil place forecasts for the primary phase are set out in Annex 1.



© Crown copyright and database rights 2015 Ordnance Survey 100025457

Scale 1:55,000

Aveley, Ockendon & Purfleet

Aveley, Ockendon & Purfleet		RECEPTION FORECAST				
School	PAN	Sep-19	Sep-20	Sep-21	Sep-22	Sep-23
Aveley	60	56	67	67	62	64
Benyon	30	35	22	24	27	26
Bonnygate	60	81	78	79	77	78
Dilkes	60	62	63	59	60	61
Holy Cross	30	28	28	28	28	28
Kenningtons	60	69	84	108	84	89
Purfleet	90	84	87	74	79	81
Shaw	60	53	70	58	59	61
Somers Heath	60	61	62	61	60	61
In Year Admissions		8	8	8	8	8
	510	537	569	566	544	557

Aveley, Ockendon & Purfleet		WHOLE SCHOOL FORECAST				
School	PAN	Sep-19	Sep-20	Sep-21	Sep-22	Sep-23
Aveley	420	441	463	482	480	469
Benyon	210	231	244	254	257	260
Bonnygate	420	457	498	531	554	578
Dilkes	420	421	425	424	424	425
Holy Cross	210	216	203	201	198	197
Kenningtons	420	440	476	519	532	566
Purfleet	630	572	583	586	591	622
Shaw	420	403	416	416	415	417
Somers Heath	420	386	401	447	463	465
In Year Admissions		54	56	58	59	60
	3,570	3,621	3,765	3,917	3,973	4,058

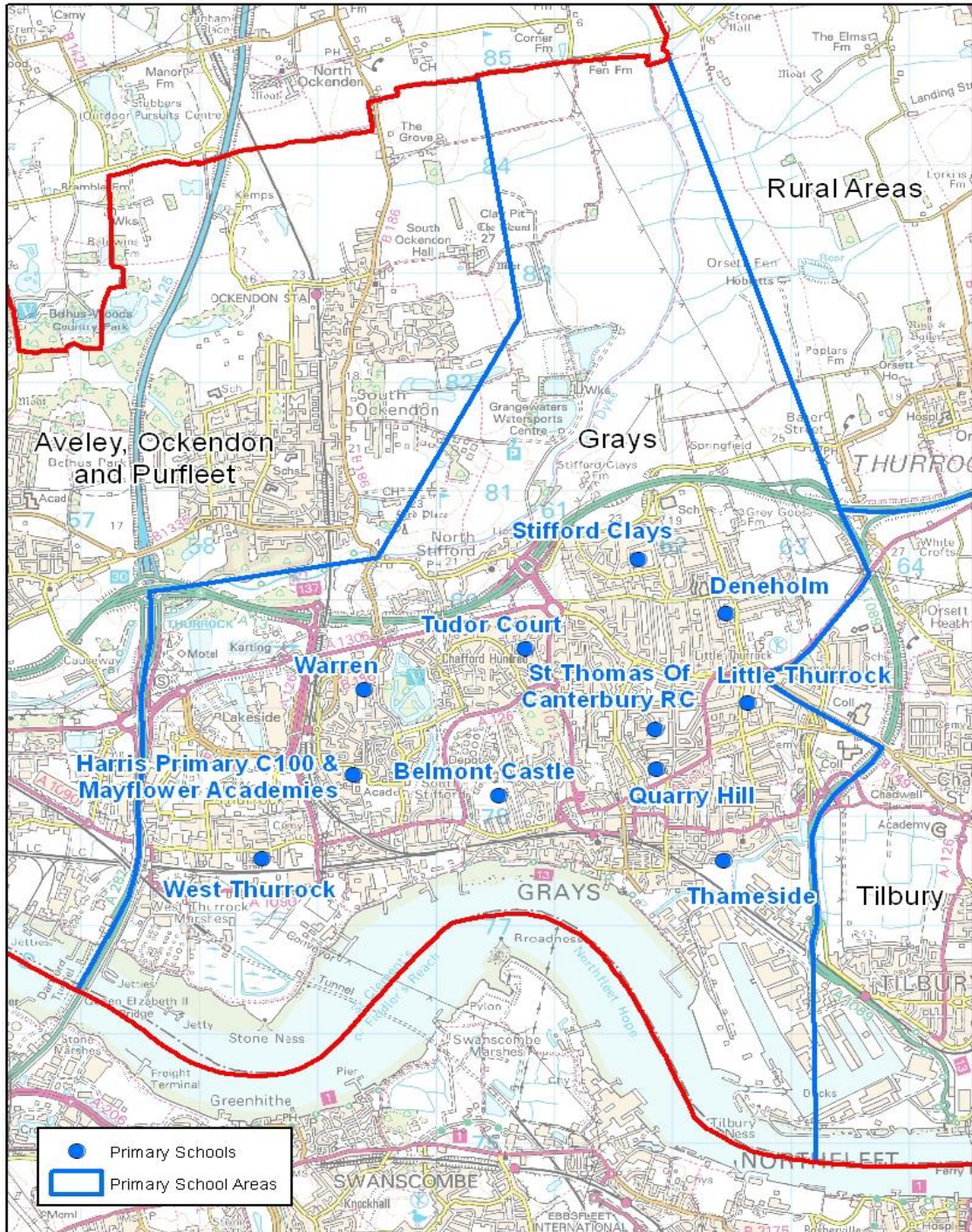
Red Cells indicate where projected numbers exceed the Published Admission Number (PAN)

The following schools have increased their class base by adding the following bulge classes to the year groups as detailed below:

Aveley Primary Year 3 and Year 4, Benyon Primary Reception and Year 2, Kenningtons Primary Academy Year 4 and Year 5.

Please note that the bulge classes are not included in the Published Admission Number (PAN).

The above forecasts include the child yield exceeding 20 pupils from proposed developments at: Aveley Football Ground, Mill Road, Former Ford Factory Arisdale Avenue, Aveley village extension south of B1335, Land South of West Thurrock Way, Purfleet Centre and Arena Essex.



© Crown copyright and database rights 2015 Ordnance Survey 100025457

Scale 1:60,000

Grays

Grays		RECEPTION FORECAST				
School	PAN	Sep-19	Sep-20	Sep-21	Sep-22	Sep-23
Belmont Castle	90	79	90	86	83	85
Deneholm	60	65	42	61	54	54
Harris Chafford Hundred	90	92	75	89	71	80
Harris Mayflower	150	115	115	115	115	115
Little Thurrock	90	83	87	94	86	88
Quarry Hill	60	53	58	57	54	56
St Thomas'	90	84	84	84	84	84
Stifford Clays	90	80	110	75	86	89
Thameside	120	96	114	94	99	102
Tudor Court	120	91	96	85	88	90
Warren	60	52	53	35	47	46
West Thurrock	60	70	63	64	64	64
In Year Admissions		14	15	14	14	14
	1080	974	1,002	953	945	967

Grays		WHOLE SCHOOL FORECAST				
School	PAN	Sep-19	Sep-20	Sep-21	Sep-22	Sep-23
Belmont Castle	630	642	667	685	699	717
Deneholm	420	419	402	403	397	392
Harris Chafford Hundred	630	621	605	606	588	580
Harris Mayflower	1,050	672	787	812	837	815
Little Thurrock	630	623	620	624	620	618
Quarry Hill	420	436	409	412	411	413
St Thomas'	630	606	600	594	588	583
Stifford Clays	630	641	633	620	615	615
Thameside	840	705	738	758	752	748
Tudor Court	840	776	753	723	693	668
Warren	420	401	395	373	365	360
West Thurrock	420	447	439	465	493	523
In Year Admissions		105	106	106	106	105
	7,560	7,094	7,154	7,181	7,164	7,137

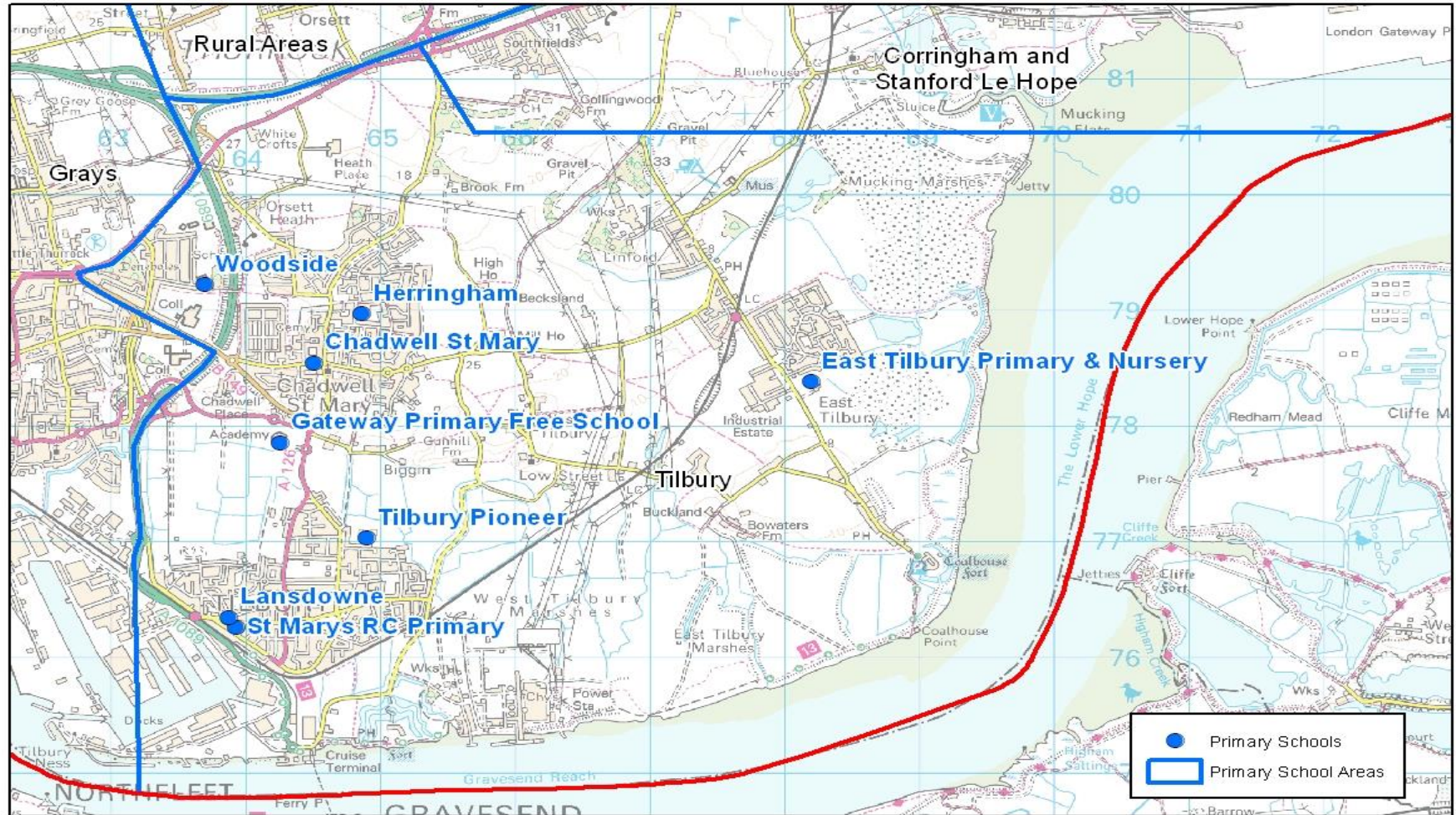
Red Cells indicate where projected numbers exceed the Published Admission Number (PAN)

The following schools have increased their class base by adding the following bulge classes to the year groups as detailed below:

Belmont Castle Year 5, Quarry Hill Academy Year 6, Stifford Clays Primary Year 6, and West Thurrock Year 6.

Please note that the bulge classes are not included in the Published Admission Number (PAN).

The above forecasts include the child yield exceeding 20 pupils from proposed developments at: William Ball Site Gumley Road, land north of Rosebery Road, Castle Road and Belmont Road, Grays Gas Holder site London Road and Land South of West Thurrock Way.



Tilbury

Tilbury		RECEPTION FORECAST				
School	PAN	Sep-19	Sep-20	Sep-21	Sep-22	Sep-23
Chadwell St Mary	30	33	44	33	37	37
East Tilbury	90	77	96	101	89	93
Gateway	60	55	55	55	55	55
Herringham	60	68	50	61	58	58
Lansdowne	90	81	82	78	78	80
St Mary's	30	30	30	30	30	30
Tilbury Pioneer	60	68	41	31	45	43
Woodside	90	111	121	119	114	117
In Year Admissions		8	8	8	8	8
	510	531	527	516	514	521

Tilbury		WHOLE SCHOOL FORECAST				
School	PAN	Sep-19	Sep-20	Sep-21	Sep-22	Sep-23
Chadwell St Mary	210	213	228	230	237	244
East Tilbury	630	678	698	725	720	700
Gateway	420	394	394	390	388	388
Herringham	420	422	421	431	439	455
Lansdowne	630	587	589	589	582	575
St Mary's	210	209	210	210	210	210
Tilbury Pioneer	420	459	445	422	407	363
Woodside	630	680	746	792	815	842
In Year Admissions		55	56	57	57	57
	3,570	3,697	3,787	3,846	3,855	3,834

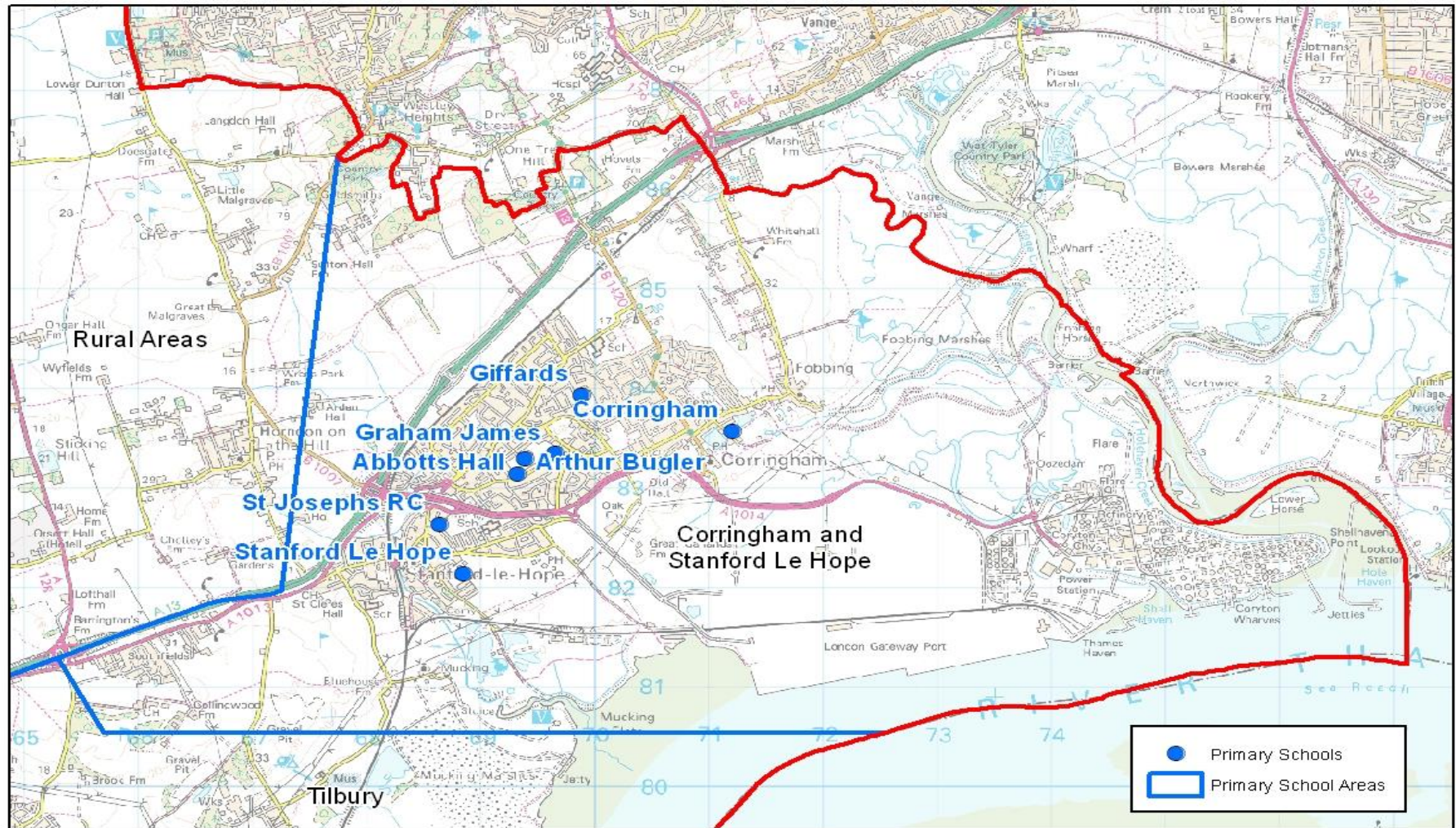
Red Cells indicate where projected numbers exceed the Published Admission Number (PAN)

The following schools have increased their class base by adding the following bulge classes to the year groups as detailed below:

East Tilbury Year 3, Year 4 and Year 6. Tilbury Pioneer Year 2 and Year 3.

Please note that the bulge classes are not included in the Published Admission Number (PAN).

The above forecasts include the child yield exceeding 20 pupils from proposed developments at: Star Industrial Estate Linford Road, Bata Field land adjacent Bata Avenue and to Rear of 201-251 Princess Margaret Road and Thurrock Woodview Campus.



Corringham and Stanford Le Hope

Corringham & Stanford le Hope		RECEPTION FORECAST				
School	PAN	Sep-19	Sep-20	Sep-21	Sep-22	Sep-23
Abbots Hall	30	38	44	31	37	37
Arthur Bugler	60	61	70	51	59	60
Corringham	60	57	43	71	56	57
Giffards	60	56	47	82	60	62
Graham James	60	82	73	62	70	70
St Joseph's	30	30	30	30	30	30
Stanford-le-Hope	60	52	51	74	58	60
In Year Admissions		6	5	6	6	6
	360	382	363	407	376	382

Corringham & Stanford le Hope		WHOLE SCHOOL FORECAST				
School	PAN	Sep-19	Sep-20	Sep-21	Sep-22	Sep-23
Abbots Hall	210	238	252	251	258	247
Arthur Bugler	420	410	420	412	411	411
Corringham	420	418	401	417	411	405
Giffards	420	442	431	452	423	426
Graham James	420	441	455	458	469	479
St Joseph's	210	231	221	211	211	211
Stanford-le-Hope	420	408	415	451	467	495
In Year Admissions		39	39	40	40	40
	2,520	2,627	2,634	2,692	2,690	2,714

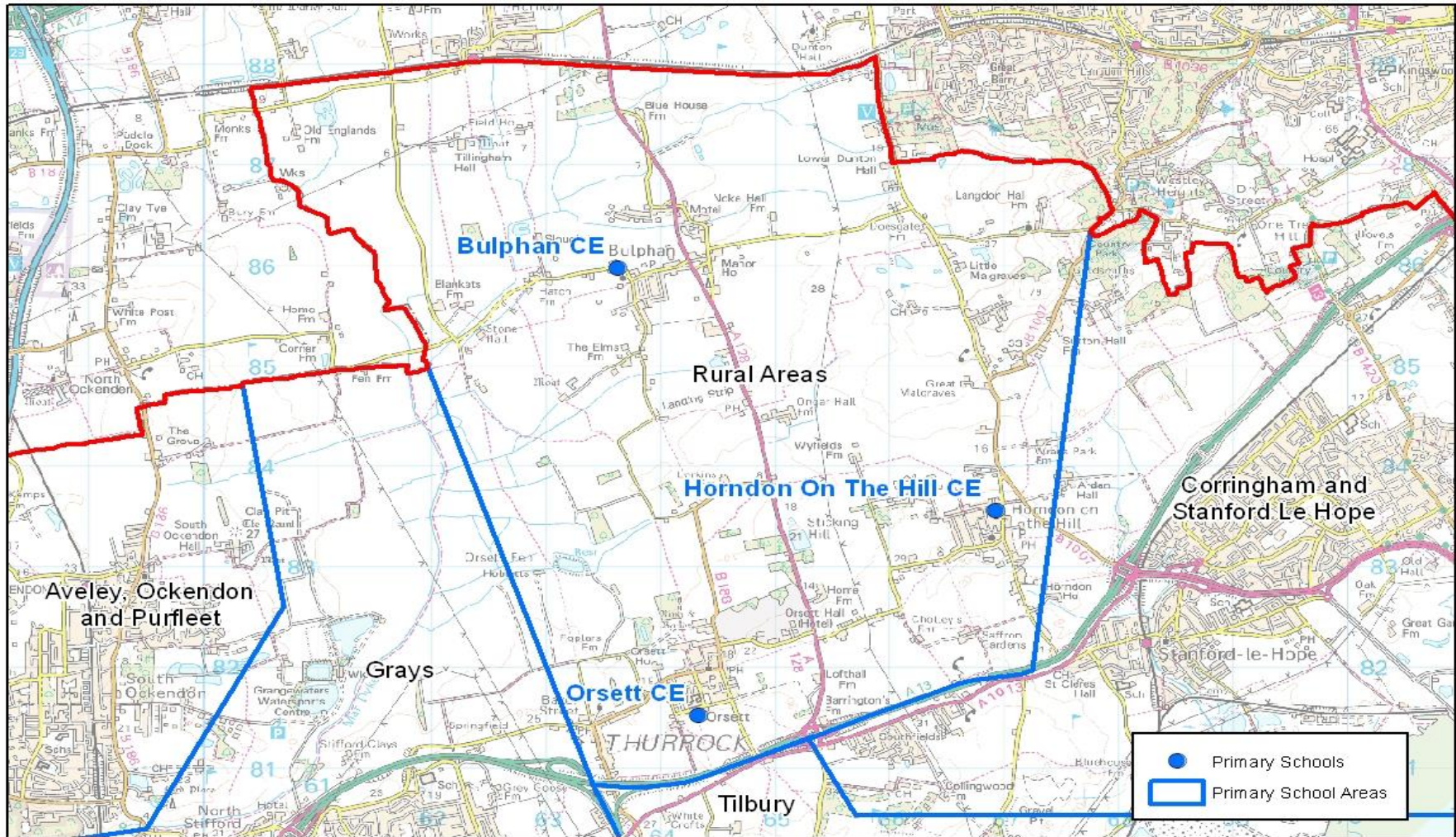
Red Cells indicate where projected numbers exceed the Published Admission Number (PAN)

The following schools have increased their class base by adding the following bulge classes to the year groups as detailed below:

Abbots Hall Primary Academy Reception and Year 3 and Giffards Primary Year 4.

Please note that the bulge classes are not included in the Published Admission Number (PAN).

The above forecasts include the child yield exceeding 20 pupils from proposed developments at: Land adjacent St Cleres School, railway line and Butts Lane, Land adjacent to railway line, Manorway and west of Victoria Road and Land Rear of Caldwell Road, Kingsman Road & Adj. to A1013.



Rural Area

Rural		RECEPTION FORECAST				
School	PAN	Sep-19	Sep-20	Sep-21	Sep-22	Sep-23
Bulphan	12	7	9	13	9	10
Horndon-on-the-Hill	30	35	23	26	27	27
Orsett	30	43	47	37	42	42
In Year Admissions		1	1	1	1	1
	72	86	80	77	79	80

Rural		WHOLE SCHOOL FORECAST				
School	PAN	Sep-19	Sep-20	Sep-21	Sep-22	Sep-23
Bulphan	84	79	82	95	100	115
Horndon-on-the-Hill	210	204	198	194	191	190
Orsett	210	222	244	250	262	274
In Year Admissions		8	8	8	8	9
	504	513	532	547	561	588

Red Cells indicate where projected numbers exceed the Published Admission Number (PAN)

There are no class base increases in this planning area.

The above forecasts include the child yield exceeding 20 pupils from proposed developments at: Little Malgraves Farm, Lower Dunton Road and Land adjacent to Bulphan by pass and Church Road.

Primary Forecast Summary

Reception intake September 2019 will be the first year of our highest birth rate, therefore it is predicted that the next 3 years will show an increase in a reception intake and subsequent year groups.

The pressure in the primary phase is being managed and will continue to be regularly monitored closely. The inward migration experienced in recent years had a more significant impact on primary places than secondary places. This may have been because we had capacity in our secondary schools which could absorb the newcomers or it may be that the families arriving in Thurrock had younger children.

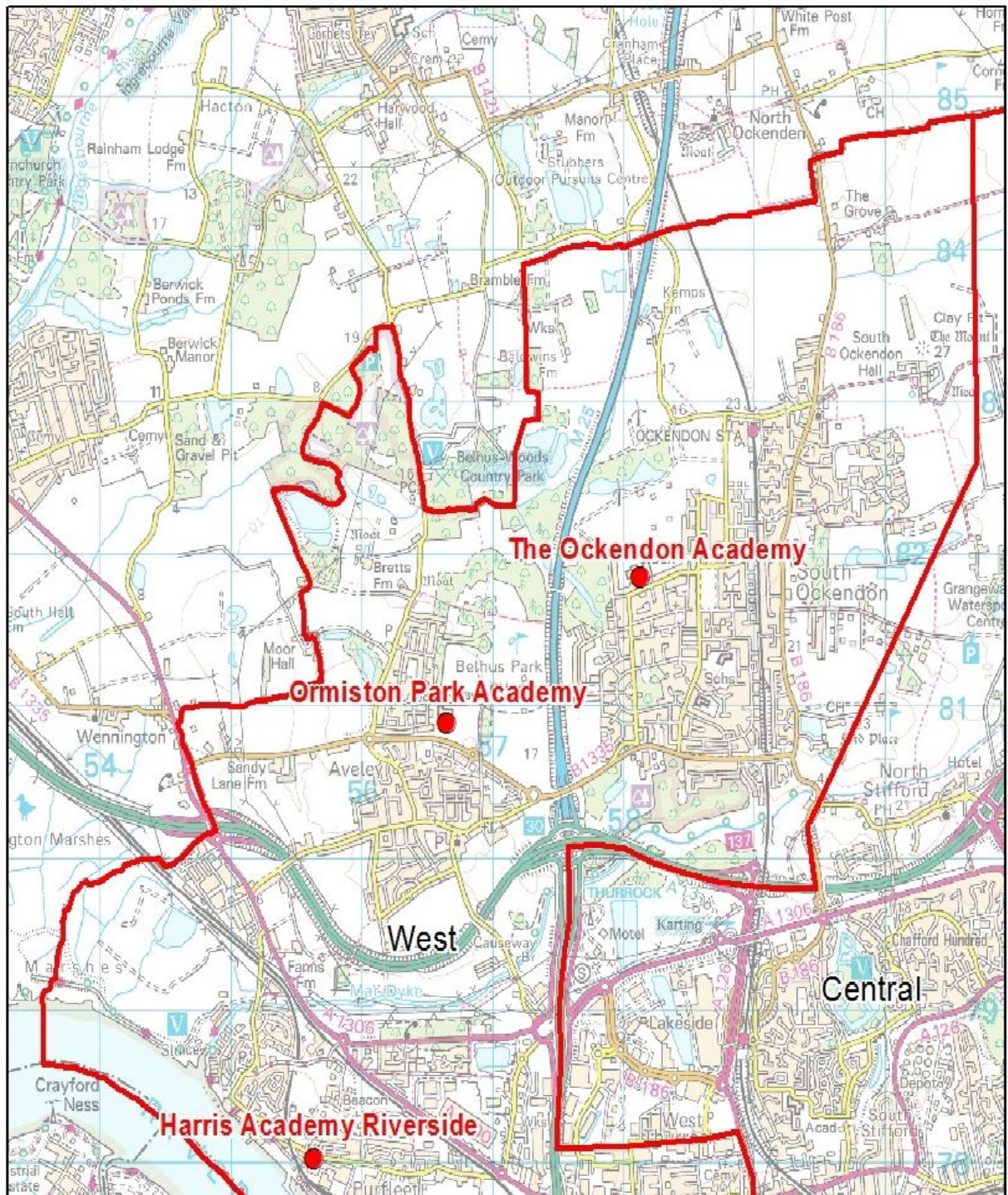
Thurrock Primary whole school numbers have increased by 19.3% since Autumn 2012 which equates to a 2,750 pupil increase. However, the autumn school census for October 2018 is showing a significant decrease in the amount of extra primary pupils when compared to the last five years.

SECONDARY FORECASTS

The primary increase is becoming noticeable when pupils are moving into Year 7 and beyond.

Whole school forecasts for each secondary planning area has been calculated using formulae to calculate the transition rate from year 6 to year 7 and the current numbers on roll in schools on the census data from October 2018 and by also adding the pupil yield from any developments and then adding an additional element of places to cater for in-year admissions. This degree of additional places is required to enable schools to absorb the number of pupils we anticipate will arrive in Thurrock from elsewhere in the UK and abroad in the September 2019/20 academic year and beyond. The impact of inward migration will be closely monitored and forecasts adjusted accordingly.

Full details of the methodology used to determine the pupil place forecasts for the secondary phase are set out in Annex 1.



West Planning Area

West Planning Area	YEAR 7 FORECAST					
School	PAN	Sep-19	Sep-20	Sep-21	Sep-22	Sep-23
Harris Academy Riverside	180	137	137	136	143	145
Ormiston Park Academy	180	164	164	161	170	173
The Ockendon Academy	240	256	256	253	267	271
In Year Admissions		8	8	8	9	9
	600	565	565	558	589	598

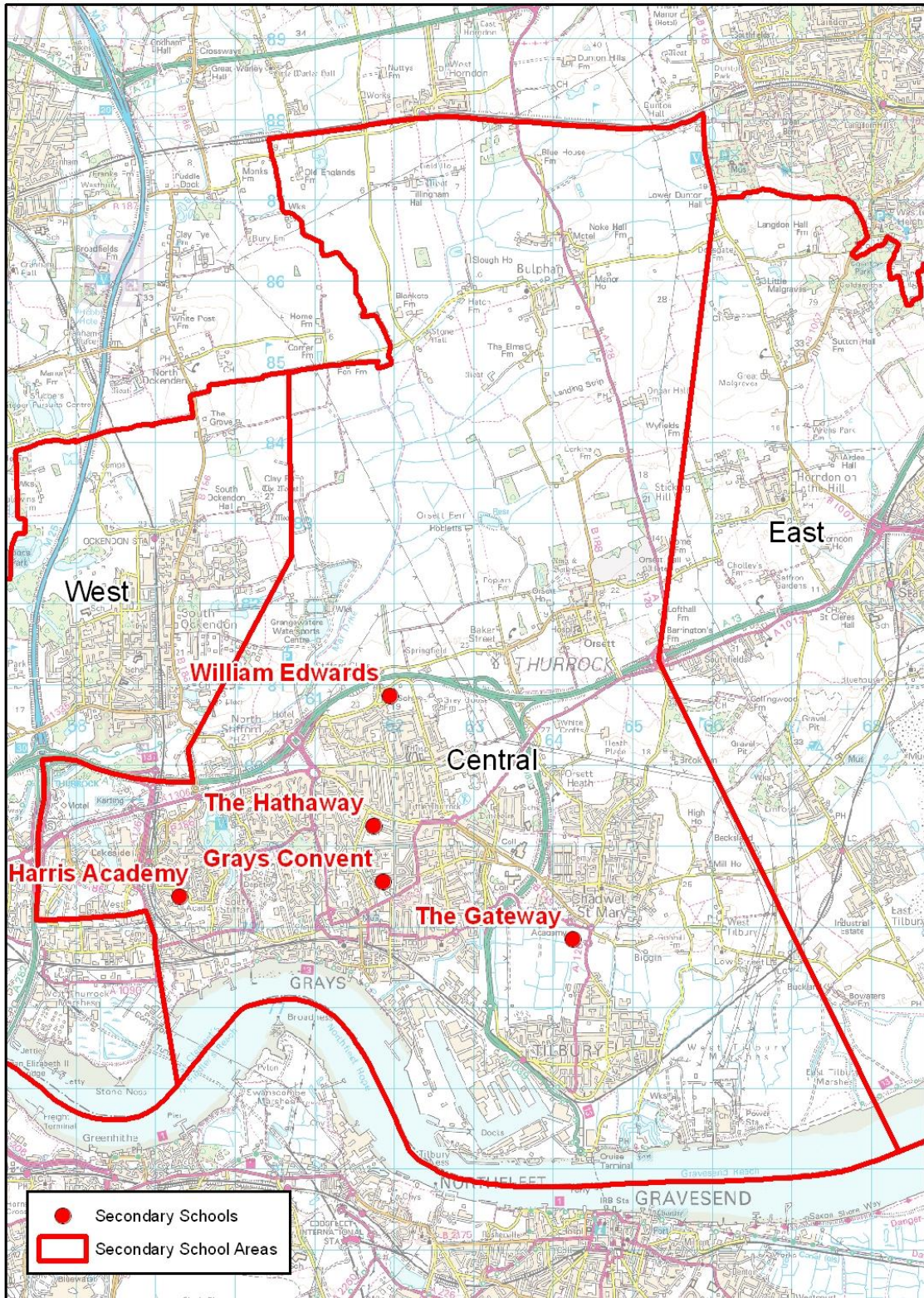
West Planning Area	WHOLE SCHOOL FORECAST					
School	PAN	Sep-19	Sep-20	Sep-21	Sep-22	Sep-23
Harris Academy Riverside	900	395	541	688	720	765
Ormiston Park Academy	900	696	765	795	876	907
The Ockendon Academy	1,200	1,208	1,261	1,293	1,335	1,374
In Year Admissions		34	39	42	44	46
	3,000	2,333	2,606	2,818	2,975	3,092

Red Cells indicate where projected numbers exceed the Published Admission Number (PAN)

Harris Riverside has now moved to their new premises in Purfleet from September 2019 and will admit 6 forms of entry into year 7. The school will be a 6 form entry secondary school going forward.

The above forecasts include the child yield exceeding 20 pupils from proposed developments at: Aveley Football Ground, Mill Road, Former Ford Factory Arisdale Avenue, Aveley village extension south of B1335, Land South of West Thurrock Way, Purfleet Centre and Arena Essex.

Please note there will be a change of name from the 1st September 2019 for The Ockendon Academy. From this date it will be known as Harris Academy Ockendon.



Central Planning Area

Central Planning Area	YEAR 7 FORECAST					
School	PAN	Sep-19	Sep-20	Sep-21	Sep-22	Sep-23
Grays Convent	124	133	133	131	139	141
Harris Academy Chafford Hundred	180	208	208	205	217	220
The Gateway Academy	240	228	228	225	238	241
The Hathaway Academy	180	186	187	184	194	197
William Edwards	250	271	272	268	283	287
In Year Admissions		15	15	15	16	16
	974	1,041	1,043	1,028	1,087	1,102

Central Planning Area	WHOLE SCHOOL FORECAST					
School	PAN	Sep-19	Sep-20	Sep-21	Sep-22	Sep-23
Grays Convent	620	627	636	644	658	677
Harris Academy Chafford Hundred	900	980	1,007	998	1,033	1,064
The Gateway Academy	1,075	1,073	1,122	1,154	1,188	1,228
The Hathaway Academy	900	885	911	941	990	1,032
William Edwards	1,250	1,287	1,328	1,350	1,390	1,407
In Year Admissions		73	75	76	79	81
	4,745	4,925	5,079	5,163	5,338	5,489

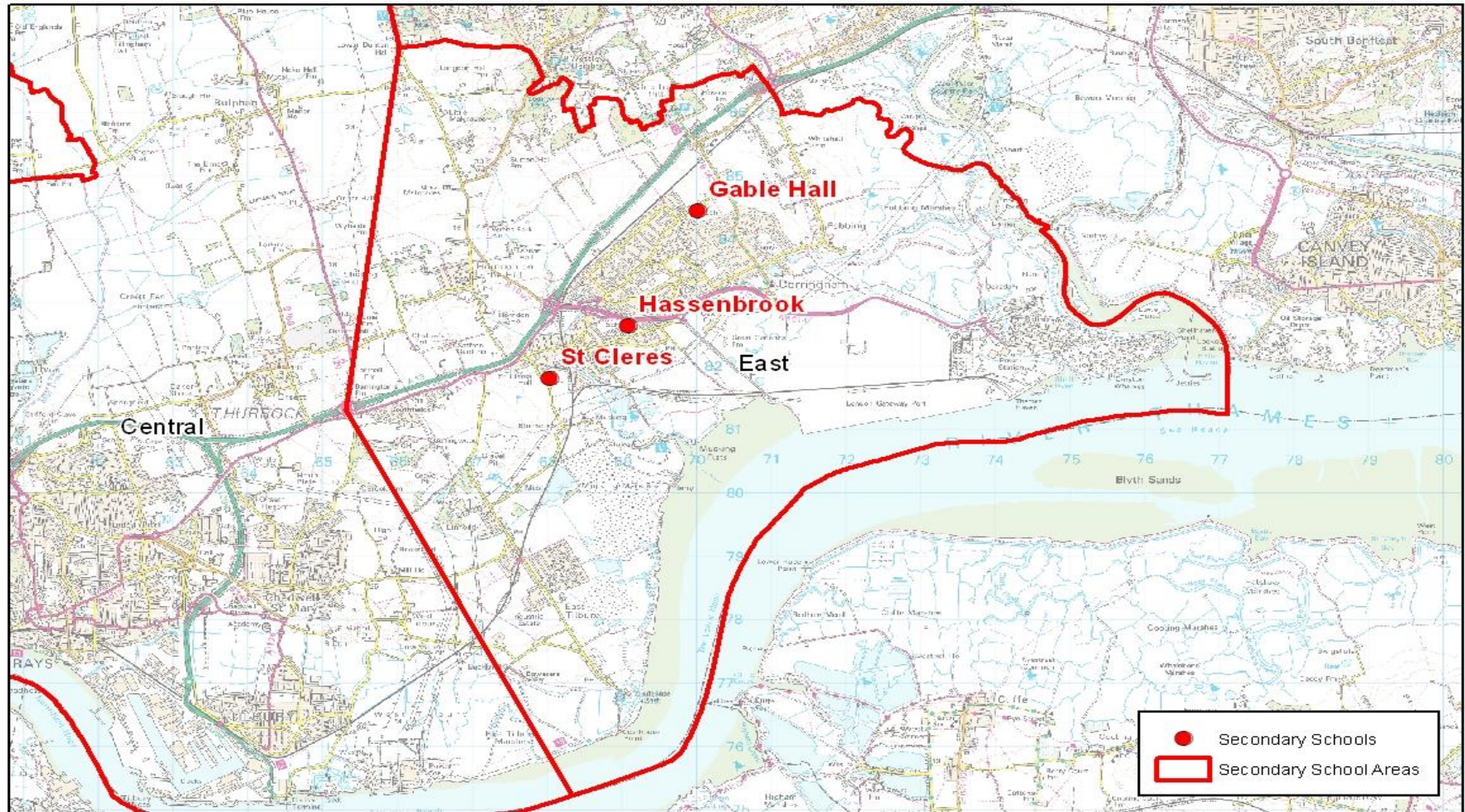
Red Cells indicate where projected numbers exceed the Published Admission Number (PAN)

The following schools have increased their class base by adding the following bulge classes to the year groups as detailed below:

Grays Convent Year 7, Harris Academy Chafford Hundred Year 7 and Year 10, William Edwards Year 8.

The above forecasts include the child yield exceeding 20 pupils from proposed developments at: Thurrock Woodview Campus, Star Industrial Estate, Linford Road, William Ball Site, Gumley Road and Grays Gas Holder Site, London Road.

The forecasts above do not include the two free schools. These are likely to open in temporary accommodation, initially with a Published Admission Number(PAN) of 120 spaces starting in Year 7 for each school.



East Planning Area

East Planning Area	YEAR 7 FORECAST					
School	PAN	Sep-19	Sep-20	Sep-21	Sep-22	Sep-23
Gable Hall	272	281	282	278	293	298
Hassenbrook Academy	150	94	94	93	98	99
St Clere's	231	251	251	247	261	265
In Year Admissions		9	9	9	10	10
	653	635	636	627	662	672

East Planning Area	WHOLE SCHOOL FORECAST					
School	PAN	Sep-19	Sep-20	Sep-21	Sep-22	Sep-23
Gable Hall	1,360	1,339	1,356	1,370	1,392	1,432
Hassenbrook Academy	750	494	471	446	470	483
St Clere's	1,155	1,335	1,380	1,414	1,458	1,357
In Year Admissions		48	48	48	50	49
	3,265	3,216	3,255	3,278	3,370	3,321

Red Cells indicate where projected numbers exceed the Published Admission Number (PAN)

The following schools have increased their class base by adding the following bulge classes to the year groups as detailed below:

Ortu Hassenbrook Year 7 and St Clere's Year 7 and Year 8 x 5.

The above forecasts include the child yield exceeding 20 pupils from proposed developments at: Land adjacent St Clere's School, railway line and Butts Lane, Adjacent to railway line, Manorway and west of Victoria Road and Bata field land adjacent Bata Avenue and to rear of 201 to 251 Princess Margaret Road.

Secondary Forecast Summary

With the number of primary pupils moving into the secondary sector the demand for secondary places is increasing and will continue to do so over the next few years. Two new Free School are due to be built and it is anticipated that these new schools will help address the projected requirement for pupil places.

COUNCIL WIDE ISSUES

The two main factors for pupil increases in both the primary and secondary phases are the increase in birth rate and the amount of in-year applications. The table below details the increases of in-year applications outside the normal admission rounds.

Academic Year	No. of children applying for a primary/secondary school place outside of the normal admission round who arrived in Thurrock from abroad.	No. of children applying for a primary/secondary school place outside of the normal admission round who arrived in Thurrock from elsewhere in the UK.	Total
2013/14	310	751	1061
2014/15	382	949	1331
2015/16	311	990	1301
2016/17	250	1096	1346
2017/18	250	1035	1285
2018/19	178	1019	1197
* NB. 2018/19 figures for 7 months only			

Planning for the children arriving in Thurrock is difficult as we do not know who they are, how old they are, and therefore, which year groups they will apply for until they make contact with School Admissions. Some may require Reception and Year 7 places, but many will require places in other year groups. This introduces the potential of bulge classes in year groups other than Reception and Year 7 as we have experienced in recent years.

With the unpredictable demand for places from outside of Thurrock an additional element of pupil places has been added to each planning area within Thurrock.

ANNEX 1: PUPIL PLACE FORECASTING METHODOLOGY

The statutory obligation for all local Councils is to provide sufficient school places. Thurrock Council regularly reviews all data, trends and builds a robust analysis of pupil planning to ensure a place for all pupils that live in Thurrock either at normal admission rounds or the unforeseen “in-year” admissions.

Thurrock experiences high levels of in-year applications which has put pressure on school places but with the excellent relationships we have with our Schools and Academies, Thurrock Council has been able to continue to meet this demand.

Primary Forecasts

Thurrock Council uses live birth data provided by the National Health Service which forms the basis of calculating the place requirements four years later. This data contains post codes where the child lives which are then allocated to the nearest school in that area to calculate places required in that schools planning area.

Whole school forecasts are based on pupil census data; this provides actual pupil numbers in each year group. The number of children calculated from any building development is added to this to then calculate the number of school places required. An element of additional places is then added to cater for in-year admissions.

The building developments which produce over 20 pupils are taken into consideration in this edition of the PPP document and are listed under each planning area.

There is a project team made up of officers from various departments within the Council that play a part in PPP that meet monthly to review forecasts and any emerging issues. This allows the Council to be proactive in taking any necessary action to meet growing pressures for school places.

Secondary Forecasts

With the high level of primary school places we have we know that these will feed through to our secondary schools. When calculating year 7 forecasts we use existing primary numbers. Using trend data we have used a transfer rate of 92%, meaning 8% of our children go outside of the Thurrock area. Thurrock has no secondary provision for Catholic boys who tend to move out of the area to attend a Catholic secondary school.

The Year 7 forecasts in this document were arrived at by examining the conversion rate from Year 6 to Year 7 for the last three years. This is the number of Thurrock Year 6 pupils who went on to become Year 7 students.

Having established the predicted number of Year 7 students for each school, we then address the child yield from housing developments.

We know the predicted number of children in each area that are likely to arise from developments but we cannot know how old they will be or which year group they will require. We therefore assume that some of the children generated by new developments will require primary places and some secondary places.

A number of places are therefore added to the whole school predictions for both primary and secondary at the schools in the areas where the development is due to take place. If a major development falls between two or more schools the child yield is divided between the schools.

Migration

Thurrock is still experiencing increases in the number of children applying for a school place “In Year”. These arrivals during the academic year are difficult to manage as we do not know how many of each age group will arrive. The extent of inward migration in recent years indicates that 6% of school places are required in the primary phase and 4% are required in the secondary phase to ensure that the new arrivals can be accommodated.

The forecasts are not constrained by the physical accommodation available in the schools in the planning area and therefore indicate where pressure on places is likely to arise.

Pupil Migration

Thurrock is a net exporter of pupils. The numbers both in and out of Thurrock for receptions and year 7 are listed below. The percentages listed are comparing these numbers against September 2018 actual numbers for reception and Year 7.

These numbers only relate to the normal admission round.

Primary

18 children are expected to come in to the LA +0.8% by September 2019

66 children expected to go outside of the LA -2.8% by September 2019

Secondary

51 children are expected to come in to the LA +2.3% by September 2019

233 children are expected to go outside of the LA – 10.6% by September 2019

ANNEX 2: SPECIAL EDUCATIONAL NEEDS AND DISABILITY (SEND)

Children and Young People with Special Educational Needs may have their needs identified through an Education Health and Care (EHC) Plan. These EHC Plans are for children and young people aged 0 – 25. This way of working allows for identification of children and young people’s needs, bringing together Education, Health and Social Care support into one plan. It is based on a person-centred, family focused approach with a stress on the individual outcomes for children and young people, improving their opportunities for education and employment.

Further information on the new Education, Health and Care Plans can be obtained from the Council’s Local Offer [www.askthurrock.org.uk/local offer](http://www.askthurrock.org.uk/local_offer).

Provision

The Council has two special schools in the borough

School	Status	Needs Met	Age Range	Number of Places
Beacon Hill Academy	Academy	Severe and profound learning difficulties	3 to 19	75
Treetops Academy	Academy	Moderate learning difficulties and Autism	3 to 19	293

Beacon Hill Post 16 provision caters for students with severe and profound and multiple learning difficulties from 16 to 19. This provision is located on the shared site with Treetops School in Grays. Students follow a personalised, accredited curriculum which promotes independence and transition to lifelong learning in the community.

Treetops is a day special school for pupils between the ages of 3 and 19. The school caters for children and young people with moderate learning difficulties and Autism. The school is located in Grays and is an Academy school.

A new Special Free School has been agreed by the Education Funding Agency and is in development. The school will be located on a site adjacent to the existing Treetops School. The new Treetops Academy is planned to open in the academic year 2020/21.

The numbers of commissioned places in the Special Schools and Resource Bases are agreed between the Local Authority and the schools on an annual basis. There is potential opportunity for additional places to be commissioned by the local authority as required and where possible during the academic year.

In addition to the special schools there are a number of mainstream schools with specialist provision in the Primary Sector:

School	Type of Provision	Age Range	Number of Places
Warren Primary	Resource base for pupils with hearing impairment	4-11	18
Stanford Le Hope Primary Academy	Resource base for pupils with visual impairment	4-11	5
Corringham Primary Academy	Resource base for pupils with speech and language difficulties	4-11	20
Harris Primary Academy	ICAN resource base for children with speech, language and communication needs	Nursery age	5 *FTE
Dilkes Primary Academy	Resource base for pupils with social, emotional and mental health difficulties	4-11	10
Lansdowne Primary Academy	Resource base for pupils with social communication /moderate learning difficulties	4-11	8
Quarry Hill Academy	Resource base for pupils with social, emotional and mental health difficulties	4-11	10

*Full Time Equivalent

Secondary phase schools with specialist provision are:

School	Type of Provision	Age Range	Number of Places
Ormiston Park Academy (ASCEND)	Resource base for pupils with social, emotional and mental health difficulties	11-19	20
Harris Academy Chafford Hundred	Resource Base for pupils with speech, language and communication needs	11-19	20
St Clere's School	Resource Base for pupils with visual and hearing impairment.	11-19	17

Support is offered to students with special needs post 16 years at South Essex College, Palmers campus of USP College, and Thurrock Adult Community College.

ANNEX 3: PROVISION FOR PUPILS OUT OF SCHOOL

Thurrock has developed two new Primary Inclusion Bases for pupils who have been permanently excluded or are at risk of permanent exclusion to provide direct support for these pupils and to support their re-integration into mainstream school. The two Inclusion Bases are at East Tilbury Primary School and Thameside Primary School, both of which are Primary Academies part of the Osborne Multi Academy Trust.

The Olive Alternative Provision Academy based in Tilbury provides a secondary offer for pupils because of exclusion, illness or other reasons, would not otherwise receive a suitable education. The service provides a range of different interventions to support young people to reengage with mainstream provision.

Admission to the service is by referral only. All referrals are made via the Council's Access and Inclusion Service.

Further information on the Olive AP Academy can be obtained from the Council's website.

ANNEX 4: POST 16 PROVISION

The 2008 Education Act raised the age of participation for young people in England. Those born on or after 1st September 1997 must remain in some form of education or training until their 18th birthday. This may be:

- full time education at school or college,
- an apprenticeship or traineeship,
- part time education or training as well as being employed, self-employed or volunteering for 20 hours per week or more.

Thurrock Council works closely in partnership with schools and colleges and other providers to plan provision for post 16 education and training. Young people can pursue a wide range of both academic and vocational courses in a range of settings.

Five secondary schools in Thurrock currently offer post 16 education; Gable Hall, Hassenbrook and St Clere's schools form the Stanford and Corringham 6th Form consortium and between them provide a range of academic and vocational courses.

The Ockendon Academy Studio School and 6th form is a 14 to 19 school offering a range of academic qualifications in addition to work based training. Applications for work based training places in the Studio School should be made via the Council's school admissions team. There are currently 75 places in the Studio School.

Harris Academy offers a 6th form provision which has a range of academic and vocational opportunities for young people, information on all the courses are available via the schools website.

The table below provides the number of students in Thurrock school 6th forms at October 2018. (Stanford and Corringham 6th Form) is made up of the Gable Hall, Hassenbrook and St Clere's consortium.

Gov	School	12	13	14	Post-16 Total
CA	Stanford & Corringham 6 th form	105	101		206
VA	Grays Convent				
CA	Harris Academy Chafford Hundred	175	184		359
CA	Harris Academy Riverside	43			43
CA	Ormiston Park Academy				
CA	The Gateway Academy				
CA	The Hathaway Academy				
CA	The Ockendon Academy	48	32		80
CA	William Edwards School				
	TOTALS	328	317		688

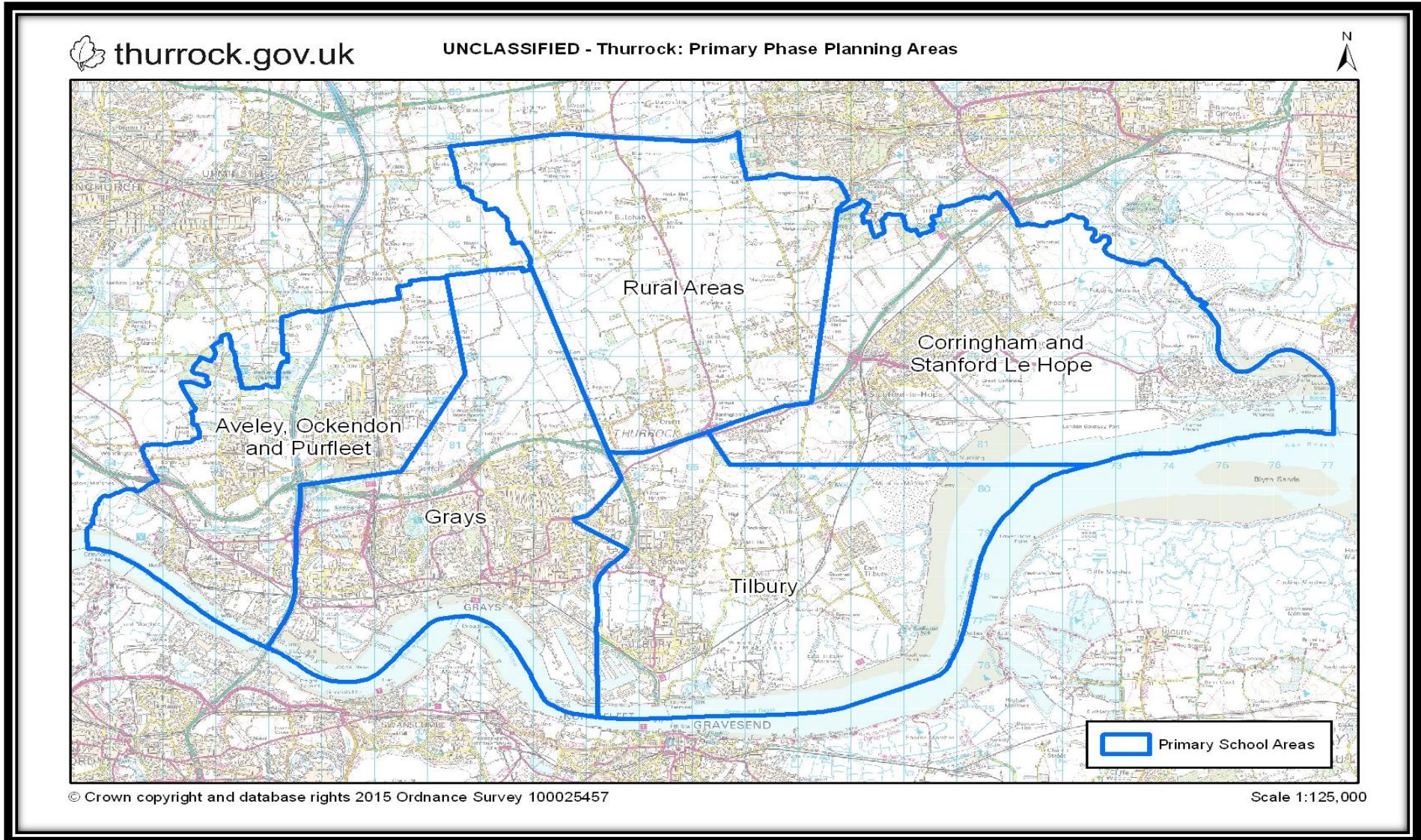
USP (A merger of Palmer's 6th form College in Grays and Seevic College in Benfleet) offer a range of A level, BTEC and secretarial courses to over 5,000 students. Find out more about the courses on offer on the college website www.uspcollege.ac.uk

South Essex College of Further and Higher Education in Grays offers a wide range of training opportunities which lead to accredited qualifications. Young people can study anything from bricklaying to costume design, they also provide a small number of higher education programmes in partnership with University of East Anglia.

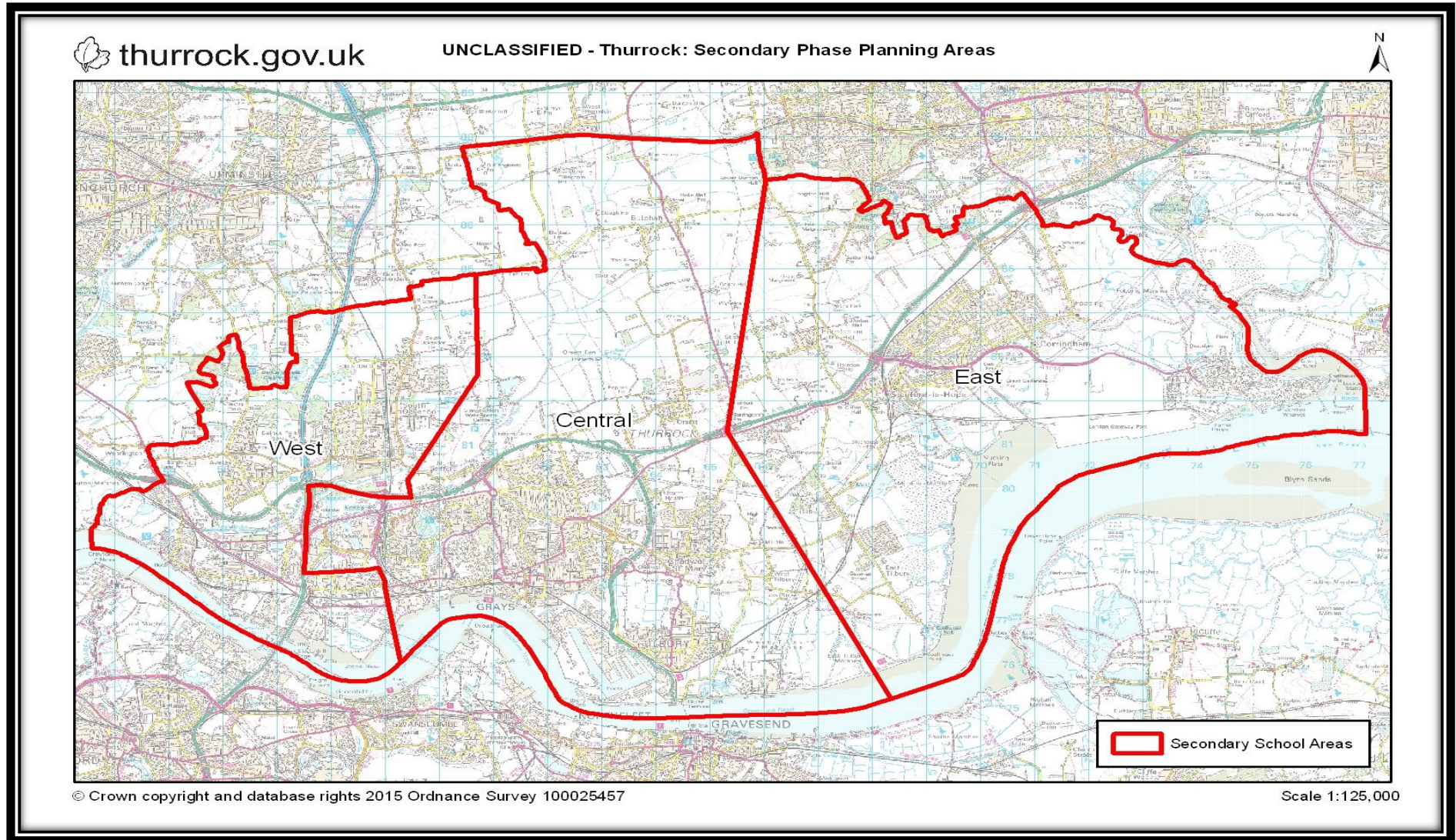
Thurrock has two special schools with a post 16 offer, this information is available via the website.

Full details on the opportunities available to Post 16 students can be found on the UCAS Progress website www.ucas.com.

ANNEX 5: MAP PRIMARY PHASE PLANNING AREAS



ANNEX 6: MAP SECONDARY PHASE PLANNING AREAS



ANNEX 7: PRIMARY FORECAST RECEPTION

Aveley, Ockendon & Purfleet		RECEPTION FORECAST				
School	PAN	Sep-19	Sep-20	Sep-21	Sep-22	Sep-23
Aveley	60	56	67	67	62	64
Benyon	30	35	22	24	27	26
Bonnygate	60	81	78	79	77	78
Dilkes	60	62	63	59	60	61
Holy Cross	30	28	28	28	28	28
Kenningtons	60	69	84	108	84	89
Purfleet	90	84	87	74	79	81
Shaw	60	53	70	58	59	61
Somers Heath	60	61	62	61	60	61
In Year Admissions		8	8	8	8	8
	510	537	569	566	544	557
Grays		RECEPTION FORECAST				
School	PAN	Sep-19	Sep-20	Sep-21	Sep-22	Sep-23
Belmont Castle	90	79	90	86	83	85
Deneholm	60	65	42	61	54	54
Harris Chafford Hundred	90	92	75	89	71	80
Harris Mayflower	150	115	115	115	115	115
Little Thurrock	90	83	87	94	86	88
Quarry Hill	60	53	58	57	54	56
St Thomas'	90	84	84	84	84	84
Stifford Clays	90	80	110	75	86	89
Thameside	120	96	114	94	99	102
Tudor Court	120	91	96	85	88	90
Warren	60	52	53	35	47	46
West Thurrock	60	70	63	64	64	64
In Year Admissions		14	15	14	14	14
	1080	974	1,002	953	945	967
Tilbury		RECEPTION FORECAST				
School	PAN	Sep-19	Sep-20	Sep-21	Sep-22	Sep-23
Chadwell St Mary	30	33	44	33	37	37
East Tilbury	90	77	96	101	89	93
Gateway	60	55	55	55	55	55
Herringham	60	68	50	61	58	58
Lansdowne	90	81	82	78	78	80
St Mary's	30	30	30	30	30	30
Tilbury Pioneer	60	68	41	31	45	43
Woodside	90	111	121	119	114	117
In Year Admissions		8	8	8	8	8
	510	531	527	516	514	521

Red Cells indicate where projected numbers exceed the Published Admission Number (PAN)

PRIMARY FORECAST RECEPTION CONTINUED

Corringham & Stanford le Hope		RECEPTION FORECAST				
School	PAN	Sep-19	Sep-20	Sep-21	Sep-22	Sep-23
Abbots Hall	30	38	44	31	37	37
Arthur Bugler	60	61	70	51	59	60
Corringham	60	57	43	71	56	57
Giffards	60	56	47	82	60	62
Graham James	60	82	73	62	70	70
St Joseph's	30	30	30	30	30	30
Stanford-le-Hope	60	52	51	74	58	60
In Year Admissions		6	5	6	6	6
	360	382	363	407	376	382
Rural		RECEPTION FORECAST				
School	PAN	Sep-19	Sep-20	Sep-21	Sep-22	Sep-23
Bulphan	12	7	9	13	9	10
Horndon-on-the-Hill	30	35	23	26	27	27
Orsett	30	43	47	37	42	42
In Year Admissions		1	1	1	1	1
	72	86	80	77	79	80

Red Cells indicate where projected numbers exceed the Published Admission Number (PAN)

ANNEX 8: PRIMARY FORECAST WHOLE SCHOOL

Aveley, Ockendon & Purfleet		WHOLE SCHOOL FORECAST				
School	PAN	Sep-19	Sep-20	Sep-21	Sep-22	Sep-23
Aveley	420	441	463	482	480	469
Benyon	210	231	244	254	257	260
Bonnygate	420	457	498	531	554	578
Dilkes	420	421	425	424	424	425
Holy Cross	210	216	203	201	198	197
Kenningtons	420	440	476	519	532	566
Purfleet	630	572	583	586	591	622
Shaw	420	403	416	416	415	417
Somers Heath	420	386	401	447	463	465
In Year Admissions		54	56	58	59	60
	3,570	3,621	3,765	3,917	3,973	4,058
Grays		WHOLE SCHOOL FORECAST				
School	PAN	Sep-19	Sep-20	Sep-21	Sep-22	Sep-23
Belmont Castle	630	642	667	685	699	717
Deneholm	420	419	402	403	397	392
Harris Chafford Hundred	630	621	605	606	588	580
Harris Mayflower	1,050	672	787	812	837	815
Little Thurrock	630	623	620	624	620	618
Quarry Hill	420	436	409	412	411	413
St Thomas'	630	606	600	594	588	583
Stifford Clays	630	641	633	620	615	615
Thameside	840	705	738	758	752	748
Tudor Court	840	776	753	723	693	668
Warren	420	401	395	373	365	360
West Thurrock	420	447	439	465	493	523
In Year Admissions		105	106	106	106	105
	7,560	7,094	7,154	7,181	7,164	7,137
Tilbury		WHOLE SCHOOL FORECAST				
School	PAN	Sep-19	Sep-20	Sep-21	Sep-22	Sep-23
Chadwell St Mary	210	213	228	230	237	244
East Tilbury	630	678	698	725	720	700
Gateway	420	394	394	390	388	388
Herringham	420	422	421	431	439	455
Lansdowne	630	587	589	589	582	575
St Mary's	210	209	210	210	210	210
Tilbury Pioneer	420	459	445	422	407	363
Woodside	630	680	746	792	815	842
In Year Admissions		55	56	57	57	57
	3,570	3,697	3,787	3,846	3,855	3,834

Red Cells indicate where projected numbers exceed the Published Admission Number (PAN)

PRIMARY FORECAST WHOLE SCHOOL CONTINUED

Corringham & Stanford le Hope		WHOLE SCHOOL FORECAST				
School	PAN	Sep-19	Sep-20	Sep-21	Sep-22	Sep-23
Abbots Hall	210	238	252	251	258	247
Arthur Bugler	420	410	420	412	411	411
Corringham	420	418	401	417	411	405
Giffards	420	442	431	452	423	426
Graham James	420	441	455	458	469	479
St Joseph's	210	231	221	211	211	211
Stanford-le-Hope	420	408	415	451	467	495
In Year Admissions		39	39	40	40	40
	2,520	2,627	2,634	2,692	2,690	2,714
Rural		WHOLE SCHOOL FORECAST				
School	PAN	Sep-19	Sep-20	Sep-21	Sep-22	Sep-23
Bulphan	84	79	82	95	100	115
Horndon-on-the-Hill	210	204	198	194	191	190
Orsett	210	222	244	250	262	274
In Year Admissions		8	8	8	8	9
	504	513	532	547	561	588

School	PAN	Sep-19	Sep-20	Sep-21	Sep-22	Sep-23
PRIMARY NUMBERS	17,724	17,291	17,607	17,914	17,973	18,060
In Year Admissions		261	265	269	270	271
	17,724	17,552	17,872	18,183	18,243	18,331

Red Cells indicate where projected numbers exceed the Published Admission Number (PAN)

ANNEX 9: SECONDARY FORECAST YEAR 7

West Planning Area	YEAR 7 FORECAST					
School	PAN	Sep-19	Sep-20	Sep-21	Sep-22	Sep-23
Harris Academy Riverside	180	137	137	136	143	145
Ormiston Park Academy	180	164	164	161	170	173
The Ockendon Academy	240	256	256	253	267	271
In Year Admissions		8	8	8	9	9
	600	565	565	558	589	598
Central Planning Area	YEAR 7 FORECAST					
School	PAN	Sep-19	Sep-20	Sep-21	Sep-22	Sep-23
Grays Convent	124	133	133	131	139	141
Harris Academy Chafford Hundred	180	208	208	205	217	220
The Gateway Academy	240	228	228	225	238	241
The Hathaway Academy	180	186	187	184	194	197
William Edwards	250	271	272	268	283	287
In Year Admissions		15	15	15	16	16
	974	1,041	1,043	1,028	1,087	1,102
East Planning Area	YEAR 7 FORECAST					
School	PAN	Sep-19	Sep-20	Sep-21	Sep-22	Sep-23
Gable Hall	272	281	282	278	293	298
Hassenbrook Academy	150	94	94	93	98	99
St Clere's	231	251	251	247	261	265
In Year Admissions		9	9	9	10	10
	653	635	636	627	662	672

Red Cells indicate where projected numbers exceed the Published Admission Number (PAN)

Harris Riverside has now moved to their new premises in Purfleet from September 2019 and will admit 6 forms of entry into year 7. The school will be a 6 form entry secondary school going forward.

Please note there will be a change of name from the 1st September 2019 for The Ockendon Academy. From this date it will be known as Harris Academy Ockendon.

ANNEX 10: SECONDARY FORECAST WHOLE SCHOOL

West Planning Area	WHOLE SCHOOL FORECAST					
School	PAN	Sep-19	Sep-20	Sep-21	Sep-22	Sep-23
Harris Academy Riverside	900	395	541	688	720	765
Ormiston Park Academy	900	696	765	795	876	907
The Ockendon Academy	1,200	1,208	1,261	1,293	1,335	1,374
In Year Admissions		34	39	42	44	46
	3,000	2,333	2,606	2,818	2,975	3,092
Central Planning Area	WHOLE SCHOOL FORECAST					
School	PAN	Sep-19	Sep-20	Sep-21	Sep-22	Sep-23
Grays Convent	620	627	636	644	658	677
Harris Academy Chafford Hundred	900	980	1,007	998	1,033	1,064
The Gateway Academy	1,075	1,073	1,122	1,154	1,188	1,228
The Hathaway Academy	900	885	911	941	990	1,032
William Edwards	1,250	1,287	1,328	1,350	1,390	1,407
In Year Admissions		73	75	76	79	81
	4,745	4,925	5,079	5,163	5,338	5,489
East Planning Area	WHOLE SCHOOL FORECAST					
School	PAN	Sep-19	Sep-20	Sep-21	Sep-22	Sep-23
Gable Hall	1,360	1,339	1,356	1,370	1,392	1,432
Hassenbrook Academy	750	494	471	446	470	483
St Clere's	1,155	1,335	1,380	1,414	1,458	1,357
In Year Admissions		48	48	48	50	49
	3,265	3,216	3,255	3,278	3,370	3,321

TOTALS	PAN	Sep-19	Sep-20	Sep-21	Sep-22	Sep-23
SECONDARY NUMBERS	11,010	10,319	10,778	11,093	11,510	11,726
In Year Admissions		155	162	166	173	176
	11,010	10,474	10,940	11,259	11,683	11,902

Red Cells indicate where projected numbers exceed the Published Admission Number (PAN)

Harris Riverside has now moved to their new premises in Purfleet from September 2019 and will admit 6 forms of entry into year 7. The school will be a 6 form entry secondary school going forward.

Please note there will be a change of name from the 1st September 2019 for The Ockendon Academy. From this date it will be known as Harris Academy Ockendon.