

Thurrock Council
Pupil Place Plan
2021-2025

Contents

Introduction	3
Pupil Place Planning (PPP).....	4
Context	5
School population historic and forecast	7
Schools and planning areas.....	8
Pupil place planning areas.....	9
Primary forecasts.....	11
Secondary forecasts	26
Council-wide issues	35
Annex 1 – pupil place forecasting methodology.....	36
Annex 2 – special educational needs and disability (SEND).....	38
Annex 3 – provision for pupils out of school.....	40
Annex 4 – post-16 provision.....	41
Annex 5 – map primary phase planning areas.....	43
Annex 6 – map secondary phase planning areas	44
Annex 7 – primary forecast reception	45
Annex 8 – primary forecast whole school	47
Annex 9 – secondary forecast year 7.....	50
Annex 10 – secondary forecast whole school.....	51

For the purpose of this document, data has been extracted from the autumn 2020 census.

Introduction

The past year has been extremely challenging as we have faced a global health crisis. Even with all the challenges Thurrock has some very exciting regeneration programmes and we are committed to ensuring that we have high quality educational opportunities for our children and young people.

Our Pupil Place Planning (PPP) document is widely used by stakeholders such as developers, and educational providers. The forecasts contained in this document are also used to inform the schools' capital programme and to date we have delivered a range of high quality projects that contributes to ensuring the delivery of good educational outcomes for the children and young people of Thurrock.

The two new Secondary Free schools Orsett Heath Academy and Thames Park Secondary school are operating on temporary sites and plan to move to their permanent sites in 2022.

A new special free school, Treetops Free School will be delivered in Thurrock, and is due to open in September 2021 in temporary accommodation on Treetops site. The new building is due to open Easter 2022.

There are plans for a new 2-form entry primary free school, located in Aveley planned to be delivered in 2022.

The new Harris Purfleet primary school is also planned to open as a 2-form entry from September 2022.

This data has allowed us to review trend data on pupil numbers which helps with future forecasting, we currently have 17,300 Primary Pupils and 10,564 Secondary Pupils. Thurrock continues to be a place of choice for families wishing to move into the area this is evidenced from the numbers of children and young people requiring a school place.

Thurrock has strong working relationships with our schools and academies and this allows us to work in partnership with them when identifying locations where we can build in additional capacity for additional places. The Council is committed to ensuring that we have clear processes in the decision making around meeting local demand for school places.

We hope that this document continues to be of interest to all stakeholders and that the content provides all stakeholders with a clear picture of potential future demand.

Michele Lucas
Assistant Director – Education and Skills
June 2021

Pupil Place Planning (PPP)

The 2015/16 birth data is still the highest Thurrock has had at 2,505 with the two years either side of that just fractionally below the 2,500 and the current Year 4 is the highest cohort we have had at 2,528. After reaching a peak of 2,505 births in 2015/16 we are now seeing a decline. The 2019/20 birth rate has reduced by 7% from last year.

The PPP document covers education for children in the age range of 4 to 16. Post-16 provision information is contained in Annex 4.

Special Educational Needs and Disability (SEND) educational provision and Early Years and Childcare provision are undertaken by other specialist areas within Thurrock Council and are not covered in this document.

A childcare sufficiency assessment compares the supply of childcare in an area to the demand for childcare. Demand for childcare is based on the number of children in the area, and the average national usage. By comparing supply with demand, we can see whether there is a need for more childcare in an area.

You can read the latest assessment report at:

www.thurrock.gov.uk/finding-childcare/childcare-sufficiency-assessment

Thurrock Council has a statutory responsibility to provide a school place for every child of school-age who live in Thurrock. Pupil Place Planning is a complex and difficult to predict as we have many factors contributing to the outcome. Planning for school places begins with the acquisition of birth data which identifies the number of children that are born and the post code they live in and it is assumed that 4 years later they will enter the school system in a local school.

There are a number of factors that are forever changing and need to be considered. In-year admissions, where children come into Thurrock mid-year (outside the normal admission rounds) are very difficult to foresee and project. Numbers of children that have moved into Thurrock from elsewhere in the country and those that moved in from other countries can be seen in Annex 1.

Thurrock's forecasting for school places to date has been robust and accurate. The difficulty with forecasting is that although forecasts are accurate we are not able to identify how old the children will be that move into Thurrock and to what year group they will be applying for. This takes close monitoring and we need to be in a position at times to take swift action in opening up classes within certain year groups.

Every effort is made to seek and offer a school place within reasonable travelling distance from the pupil's home.

Thurrock calculates the pupil yield from housing developments and then adds this to the projected pupil numbers. Thurrock currently does not project any child yield from a one bed roomed flat but the current economic climate suggests that this is now not so. Families moving in with other families make projecting pupil numbers now more difficult to predict the demand at local school level.

We are committed to ensuring that parental preference and an environment built on strong partnership foundations provides healthy competition across both primary, secondary and post 16 provision.

Context

Under the banner **People, Place, Prosperity**, Thurrock Council is creating a place where people and businesses want to stay and thrive and developers and investors want to invest.

Investment in infrastructure for the benefit of residents and local businesses is key. Good roads, health services, schools and leisure facilities are all required to enable people to work and play, live and stay in the borough.

Situated on the north side of the River Thames bordering Essex, Kent and east London, Thurrock is an area of great contrast and unique opportunities and is a crucial strategic player in the South East Local Enterprise Partnership (SELEP), the Association of South Essex Local Authorities (ASELA) and the Thames Estuary plans.

Thurrock has a well-balanced mix of beauty and business with £20billion investment planned for homes, jobs and infrastructure, including £6billion being invested in private sector jobs.

Rural villages and market towns are set into the 70% of the borough which is green belt. Nature reserves, heritage locations and sites of special scientific interest abound.

Three international ports punctuate 18 miles of riverfront with cranes and gigantic container ships, while industrial parks line the A13, all within driving distance of the major London airports. Indeed, Thurrock is probably more important strategically to London than the London boroughs themselves as through our ports the capital is fed, fuelled and clothed.

There has been a lot of talk about plans in the past but there is now a step-change to actual delivery – some master plans are agreed, with contractors on-site and work is beginning.

Thurrock has a growing population – predicted to rise by approximately 10% every decade. The ethnic profile of Thurrock has become increasingly diverse over the last decade. Both the age and ethnic profiles change significantly between the 20 wards.

The schools capital programme delivers accommodation where there is a temporary need to increase places in relevant year groups. A school expansion is considered and delivered where there is a need for a more permanent increase in schools places if a school has at least three temporary bulge classes and the pupil place plan is forecasting a shortage of places in the same planning area.

We are working towards a future where every resident has a job – 24,500 new jobs are planned over 20 years – with better educated children and skilled residents who can access local and national employment opportunities.

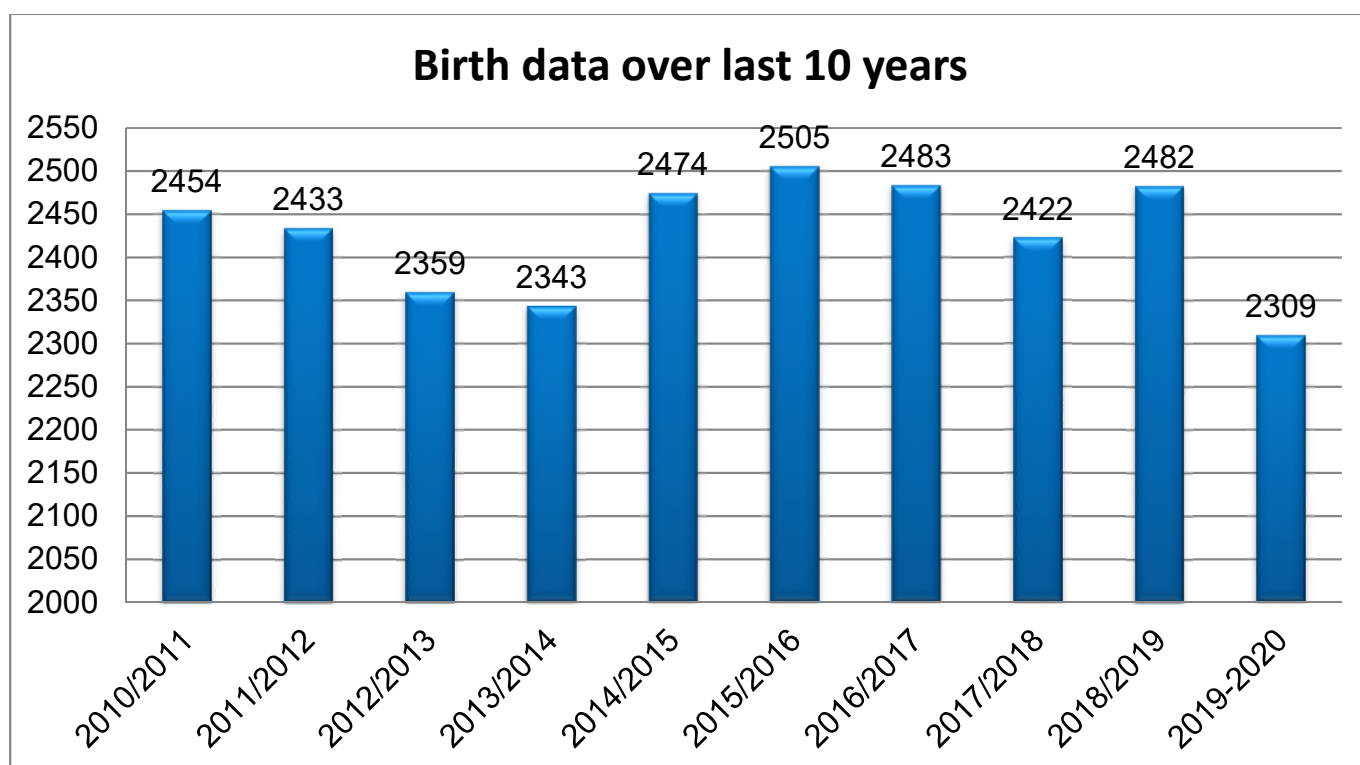
There are plans for four Integrated Medical Centres in the borough, the first of which is now being built in Corringham and is due to open in 2022. This is just one of a series of exciting initiatives being delivered with our health partners.

Thurrock is a place with a rich cultural heritage, which is often overlooked. With our cultural partners we are developing plans to enable all Thurrock residents to enjoy and benefit from high quality arts and heritage activity, creating a strong pride in place, better well-being and economic prosperity.

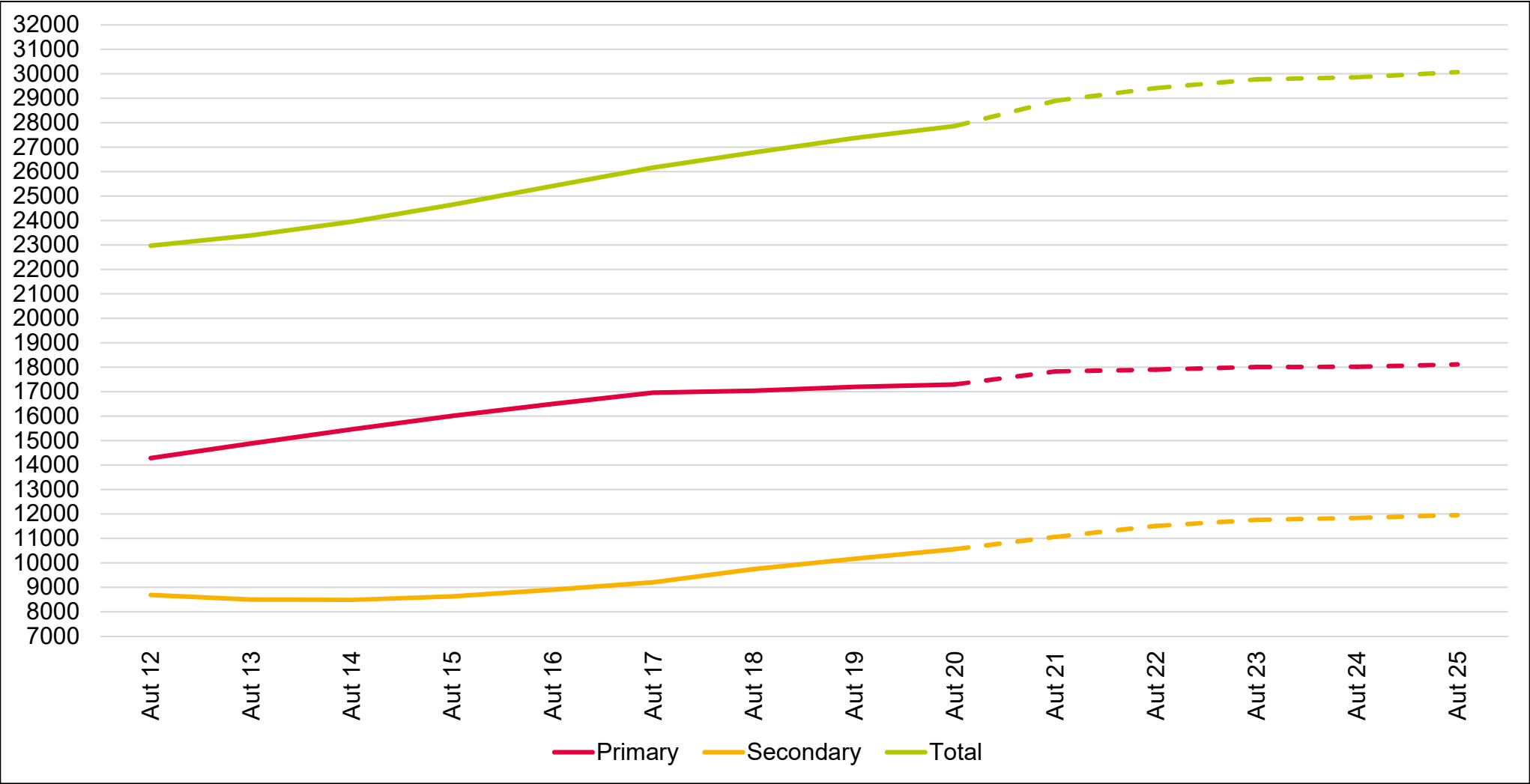
The table below demonstrates the conversion of live births in Thurrock to the actual take up of school places. This is showing a slight increase in reception numbers. This data enables Thurrock to project the place requirements for future years using the birth data available.

Year of birth	2008/09	2009/10	2010/11	2011/12	2012/13	2013/14	2014/15	2015/16
Number of live births in the authority	2,367	2,330	2,454	2,433	2,343	2,343	2,474	2,505
Year entering school at 4+	2013/14	2014/15	2015/16	2016/17	2017/18	2018/19	2019/20	2020/21
Number of children admitted into reception	2,321	2,277	2,430	2,463	2,407	2,390	2,461	2,546
Historical uptake factor	98.06%	97.73%	99.02%	101.23%	102.73%	102.01%	99.47%	101.64%

The graph below highlights that Thurrock's live births after reaching a peak of 2,505 in 2015/16 we are now seeing a decrease.



School population historic and forecast



Solid line = historic data. Dashed line = forecast data.

Schools and planning areas

Schools

There are currently 39 Primary schools, 13 Secondary schools and 3 Special Schools and one Alternative Provision provider in Thurrock.

Type	Academies	Community Schools	Voluntary Aided Schools	Voluntary Controlled	Foundation	Free School
Primary Schools	37	0	0	0	0	2
Secondary Schools	10	0	1	0	0	2
Special Schools	3	0	0	0	0	0

Full details of the schools and the oversubscription criteria applied to each one is available within the council's school admissions primary and secondary booklets, which can be found at www.thurrock.gov.uk/admissions. These booklets contain information on how to make an application for a school place.

Each Academy, Free School and Voluntary Aided-School is its own Admissions Authority. In respect of Voluntary Aided Schools the governing body of the school determines admission arrangements. For Academies and Free Schools, the relevant Academy Trust is the Admission Authority. Each individual Admissions Authority applies its own oversubscription criteria to applications and determines which applicants to offer places to.

Applications for Thurrock Schools are made via the co-ordinated admissions process which is administered by the Council.

Pupil place planning areas

Thurrock Council has 8 schools planning areas, 5 for Primary and 3 for Secondary.

The Primary planning areas are detailed in the lists below.

Primary planning areas

Aveley, Ockendon, Purfleet-on-Thames:

- Aveley Primary
- Benyon Primary
- Bonnygate Primary
- Dilkes Academy
- Holy Cross Catholic Primary
- Kenningtons Primary Academy
- Purfleet Primary Academy
- Shaw Primary Academy
- Somers Heath Primary

Tilbury:

- Chadwell St Mary Primary
- East Tilbury Primary & Nursery
- The Gateway Primary Free
- Herringham Primary Academy
- Lansdowne Primary Academy
- St Mary's Catholic Primary
- Tilbury Pioneer Academy
- Woodside Academy

Rural areas:

- Bulphan C of E Academy
- Horndon on the Hill C of E Primary
- Orsett C of E Primary Academy

Grays:

- Belmont Castle Academy
- Deneholm Primary
- Harris Primary Academy Chafford Hundred
- Harris Primary Academy Mayflower
- Little Thurrock Primary
- Quarry Hill Academy
- St Thomas of Canterbury Catholic Primary
- Stifford Clays Primary
- Thameside Primary
- Tudor Court Primary
- Warren Primary
- West Thurrock Academy

Corringham and Stanford-le-Hope:

- Abbots Hall Primary Academy
- Arthur Bugler Primary
- ORTU Corringham Primary
- Giffards Primary
- Graham James Primary Academy
- St Joseph's Catholic Primary
- Stanford-le-Hope Primary

The planning areas for the Primary phase are shown on the map in Annex 5. The Primary reception forecast summary is shown in Annex 7.

The Primary phase forecast whole school summary is shown in Annex 8.

The Secondary planning areas are detailed in the lists below.

Secondary planning areas

West:

- Harris Academy Ockendon
- Ormiston Park Academy
- Harris Academy Riverside

East:

- ORTU Gable Hall
- ORTU Hassenbrook Academy
- St Clere's School

Central:

- The Gateway Academy
- Grays Convent High School
- The Hathaway Academy
- Harris Academy Chafford Hundred
- William Edwards School
- Orsett Heath Academy
- Thames Park Secondary

The planning areas for the Secondary phase are shown on the map in Annex 6.

The Secondary Year 7 summary forecast is shown in Annex 9.

The Secondary phase whole school summary forecast is shown in Annex 10.

Primary forecasts

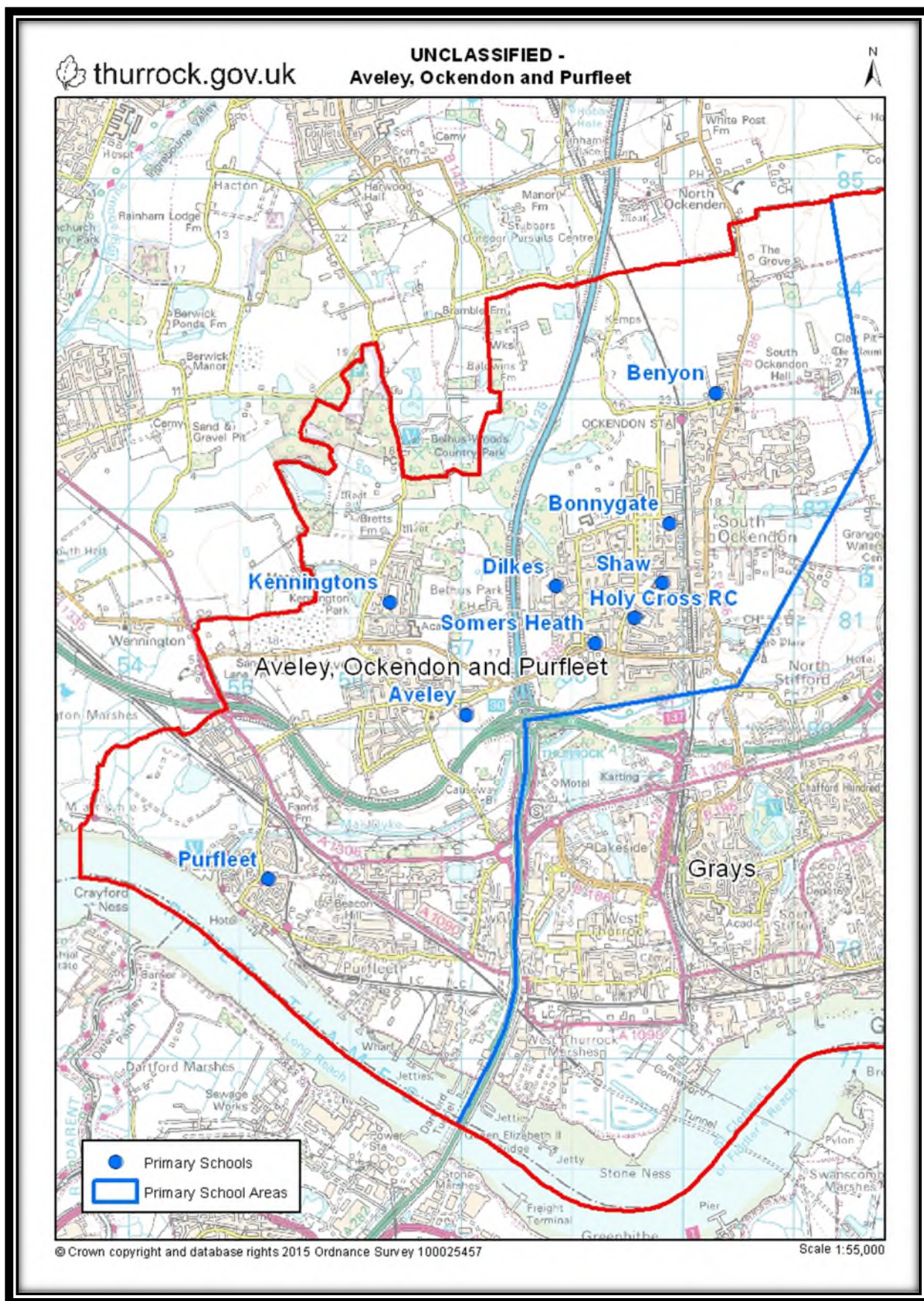
Pupil place projections for each of the planning areas are set out in the following pages.

The whole school projections for each primary school planning area have been calculated using birth data which in recent years was showing an increase 5 years later when pupils reach school-age. These are projected to calculate reception numbers along with the actual number of children on roll in the schools in the October 2020 census, adding the pupil yield from housing developments and then adding an additional element of places to cater for in-year admissions.

This degree of additional places is required to enable schools to absorb the number of pupils we anticipate will arrive in Thurrock from elsewhere in the UK and abroad in the September 2021/22 academic year and beyond. The impact of inward migration will be closely monitored and forecasts adjusted accordingly.

Full details of the methodology used to determine the pupil place forecasts for the primary phase are set out in Annex 1.

Aveley, Ockendon and Purfleet-on-Thames map



Aveley, Ockendon and Purfleet-on-Thames forecasts

Bold red cells indicate projected numbers exceed the Published Admission Number (PAN).

Aveley, Ockendon and Purfleet-on-Thames schools	PAN	Reception forecast				
		Sep-21	Sep-22	Sep-23	Sep-24	Sep-25
Aveley	60	62	67	72	48	62
Benyon	60	39	40	67	49	50
Bonnygate	60	57	59	55	47	54
Dilkes	60	65	78	54	54	62
Holy Cross	30	30	30	30	30	30
Kenningtons	60	81	61	94	60	72
Purfleet	90	73	54	69	53	60
Shaw	60	55	42	52	32	43
Somers Heath	60	63	74	61	55	61
In-year admissions		8	8	8	6	7
Totals	540	533	513	562	434	501

Aveley, Ockendon and Purfleet-on-Thames schools	PAN	Whole school forecast				
		Sep-21	Sep-22	Sep-23	Sep-24	Sep-25
Aveley	420	462	460	457	445	447
Benyon	420	289	305	349	360	380
Bonnygate	420	413	420	422	416	412
Dilkes	420	456	473	467	461	463
Holy Cross	210	209	210	210	210	210
Kenningtons	420	427	416	460	461	479
Purfleet	630	562	534	545	530	531
Shaw	420	405	393	392	374	368
Somers Heath	420	413	427	430	427	429
In-year admissions		55	55	56	55	56
Totals	3,780	3,691	3,693	3,788	3,739	3,775

Benyon Primary has increased to a 2-form entry.

The following schools have increased their class base by adding the following bulge classes to the year groups as detailed below:

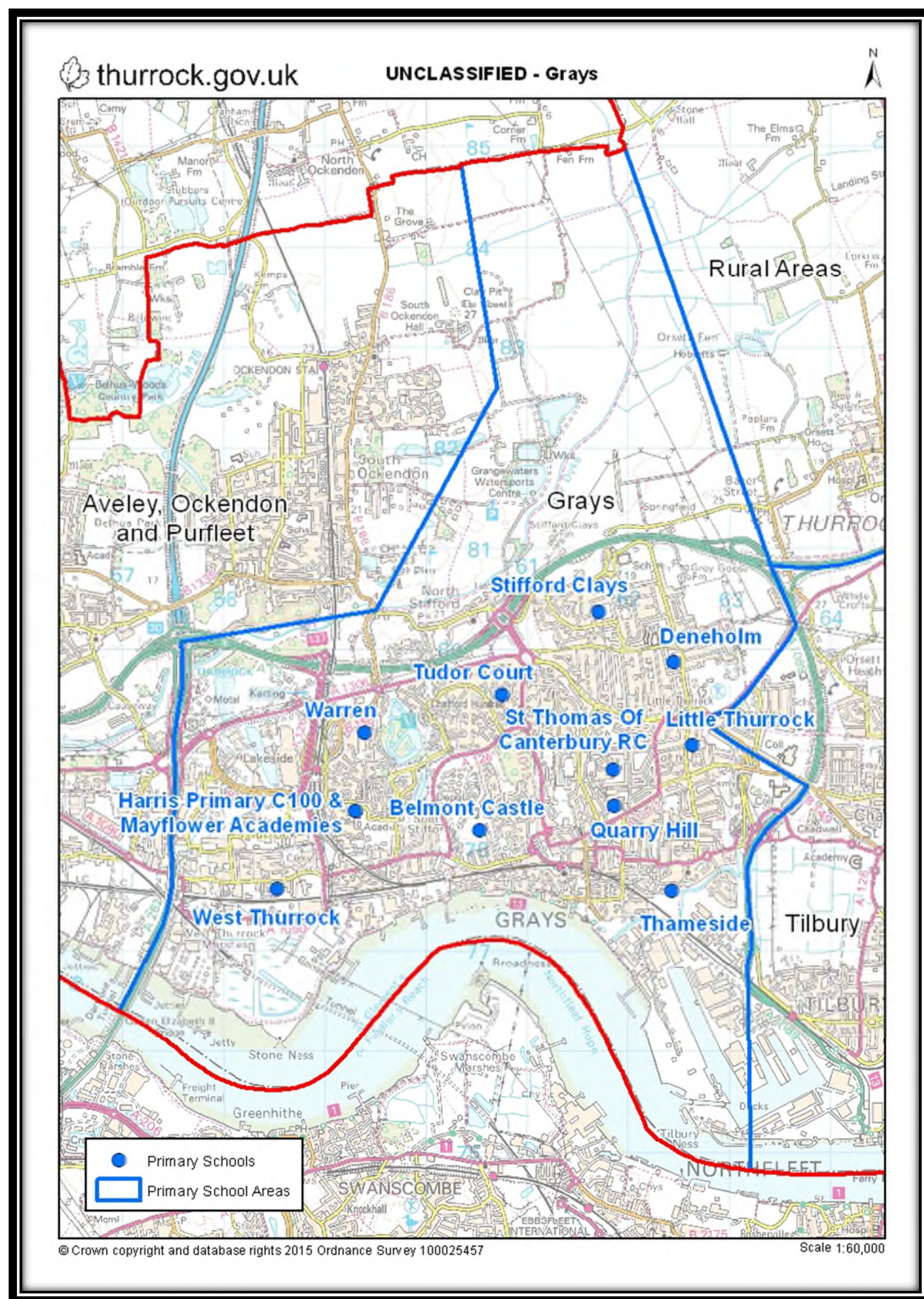
- Aveley Primary Year 4 and Year 5
- Benyon Primary Year 1 and Year 3
- Kenningtons Primary Academy Year 5 and Year 6.

The bulge classes are not included in the Published Admission Number (PAN).

The above forecasts include the child yield exceeding 20 pupils from developments at:

- Mill Road
- former Ford Factory, Arisdale Avenue
- Aveley village extension south of B1335
- Purfleet Centre site
- Culver Centre site, Daiglen Drive

Grays map



Grays forecasts

Bold red cells indicate projected numbers exceed the Published Admission Number (PAN).

Grays schools	PAN	Reception forecast				
		Sep-21	Sep-22	Sep-23	Sep-24	Sep-25
Belmont Castle	90	97	89	90	86	88
Deneholm	60	67	71	69	51	64
Harris Chafford Hundred	90	97	75	71	81	76
Harris Mayflower	150	151	120	119	127	122
Little Thurrock	90	99	123	84	110	104
Quarry Hill	60	58	71	71	69	67
St Thomas'	90	79	79	79	79	79
Stifford Clays	90	64	59	76	62	65
Thameside	120	100	106	99	83	96
Tudor Court	90	85	77	87	83	82
Warren	60	38	36	48	29	38
West Thurrock	60	61	56	54	46	52
In-year admissions		15	14	14	14	14
Totals	1050	1,011	976	961	920	947

Grays schools	PAN	Whole school forecast				
		Sep-21	Sep-22	Sep-23	Sep-24	Sep-25
Belmont Castle	630	677	700	719	732	741
Deneholm	420	422	433	445	438	442
Harris Chafford Hundred	630	629	617	600	592	578
Harris Mayflower	1,050	932	962	932	938	940
Little Thurrock	630	624	657	652	677	694
Quarry Hill	420	424	438	453	464	472
St Thomas'	630	598	589	580	570	562
Stifford Clays	630	585	554	540	515	495
Thameside	840	786	782	767	750	744
Tudor Court	630	748	708	680	645	613
Warren	420	392	376	377	361	366
West Thurrock	420	415	433	458	464	464
In-year admissions		108	109	108	107	107
Totals	7,350	7,340	7,358	7,311	7,253	7,218

The following schools have increased their class base by adding the following bulge classes to the year groups as detailed below:

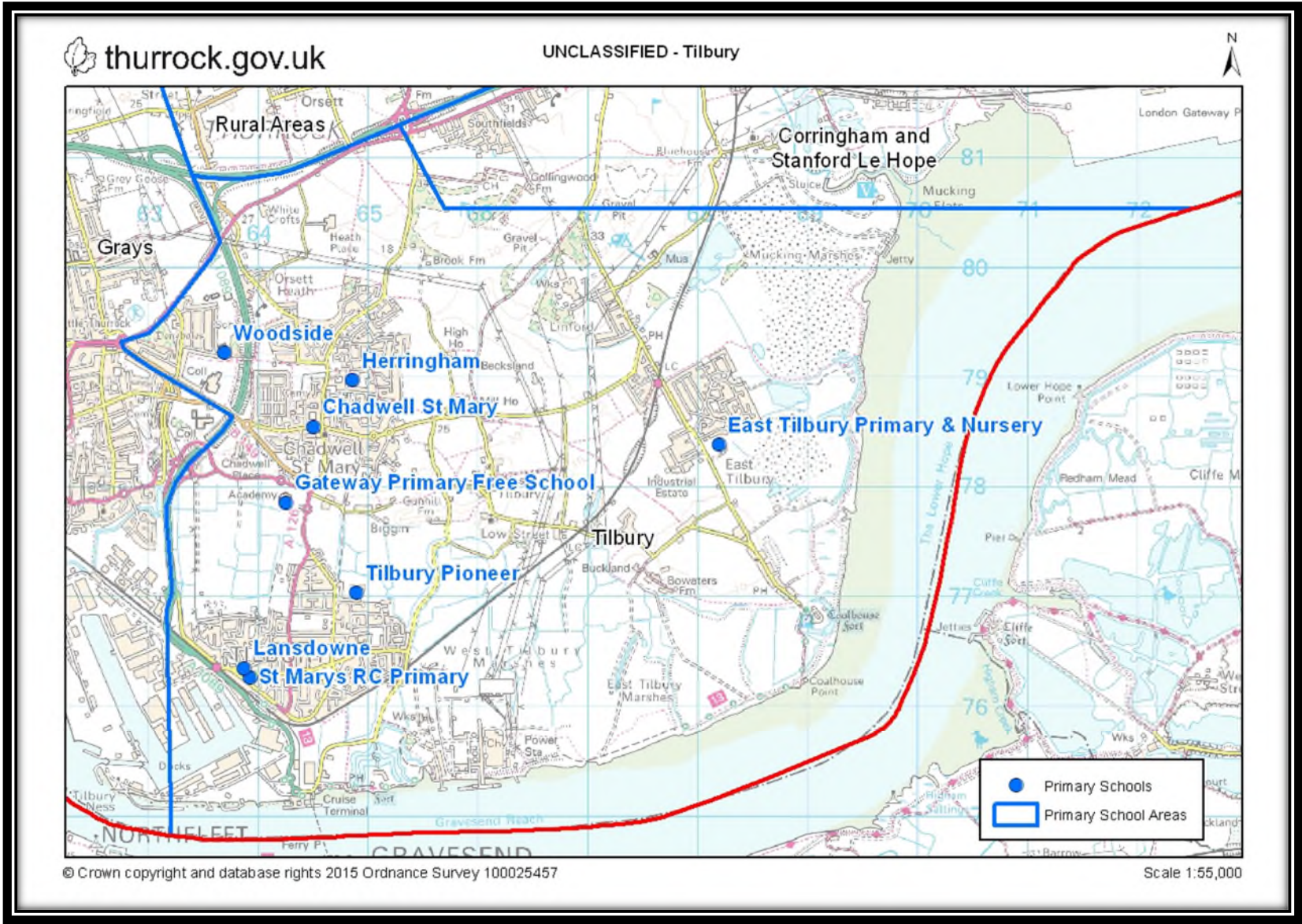
- Belmont Castle Reception and Year 6

The bulge classes are not included in the Published Admission Number (PAN).

The above forecasts include the child yield exceeding 20 pupils from developments at:

- William Ball site, Gumley Road, Grays
- Gas Holder site, London Road
- former Hillside Sports and Social Club
- land adjacent to Devonshire Road and London Road
- land south of West Thurrock Way
- land north of Rosebery Road, Castle Road and Belmont Road
- Arena Essex site – proposed

Tilbury map



Tilbury forecasts

Bold red cells indicate projected numbers exceed the Published Admission Number (PAN).

Tilbury schools	PAN	Reception forecast				
		Sep-21	Sep-22	Sep-23	Sep-24	Sep-25
Chadwell St Mary	30	24	26	22	24	24
East Tilbury	120	109	144	146	143	136
The Gateway Free School	60	45	55	51	43	49
Herringham	60	59	55	62	53	57
Lansdowne	90	81	76	76	80	77
St Mary's	30	30	30	30	30	30
Tilbury Pioneer	60	54	71	56	57	60
Woodside	90	92	82	95	107	94
In-year admissions		7	8	8	8	8
Totals	540	501	547	546	545	535

Tilbury schools	PAN	Whole school forecast				
		Sep-21	Sep-22	Sep-23	Sep-24	Sep-25
Chadwell St Mary	210	202	199	191	185	179
East Tilbury	840	686	743	791	846	895
Gateway	420	401	396	389	372	363
Herringham	420	414	409	411	406	404
Lansdowne	630	612	604	593	589	576
St Mary's	210	210	210	210	210	210
Tilbury Pioneer	420	436	452	421	420	420
Woodside	630	649	642	647	664	668
In-year admissions		54	55	55	56	56
Totals	3,780	3,664	3,710	3,708	3,747	3,771

The following schools have increased their class base by adding the following bulge classes to the year groups as detailed below:

- East Tilbury Year 4 and Year 5
- Tilbury Pioneer Year 3 and Year 4

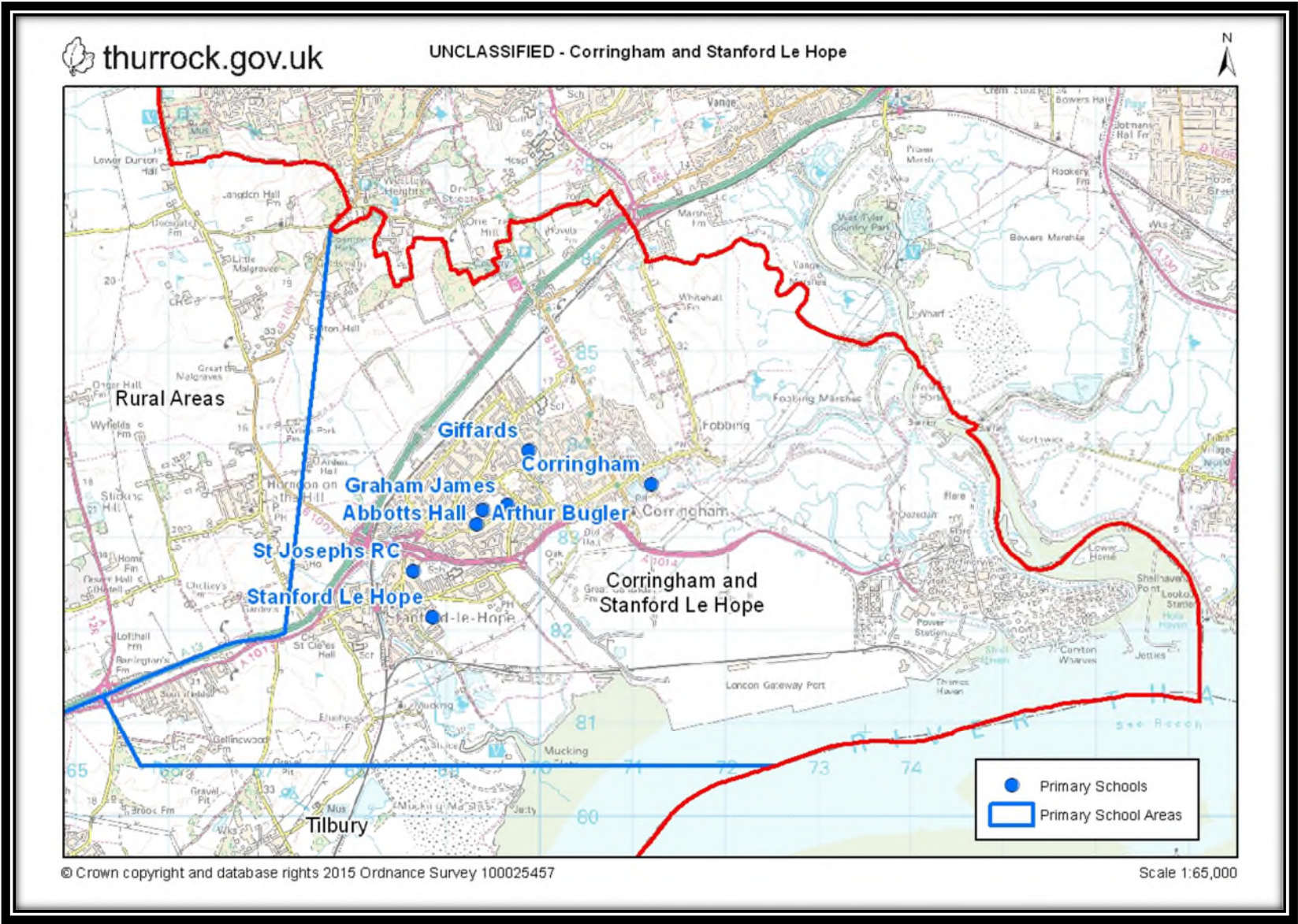
The bulge classes are not included in the Published Admission Number (PAN).

The above forecasts include the child yield exceeding 20 pupils from developments at:

- Bata Field land adjacent Bata Avenue and to Rear of 201-251 Princess Margaret Road

- Thurrock Woodview Campus
- former St Chad's School
- Star Industrial Estate, Linford Road – proposed

Corringham and Stanford-le-Hope map



Corringham and Stanford-le-Hope forecasts

Bold red cells indicate projected numbers exceed the Published Admission Number (PAN).

Corringham and Stanford le Hope schools	PAN	Reception forecast				
		Sep-21	Sep-22	Sep-23	Sep-24	Sep-25
Abbots Hall	60	31	31	26	24	27
Arthur Bugler	60	43	52	52	44	48
Corringham	60	76	59	86	66	70
Giffards	60	90	69	76	69	71
Graham James	60	51	89	56	72	67
St Joseph's	30	26	26	26	26	26
Stanford-le-Hope	60	79	66	71	67	68
In Year Admissions		6	6	6	6	6
Totals	390	402	398	399	374	383

Corringham and Stanford-le-Hope schools	PAN	Whole school forecast				
		Sep-21	Sep-22	Sep-23	Sep-24	Sep-25
Abbots Hall	420	254	254	231	227	224
Arthur Bugler	420	406	397	389	373	362
Corringham	420	428	427	453	464	473
Giffards	420	469	447	462	482	534
Graham James	420	410	440	435	451	458
St Joseph's	210	197	193	191	189	185
Stanford-le-Hope	420	430	447	483	520	547
In-year admissions		39	39	40	41	42
Totals	2,730	2,633	2,644	2,684	2,747	2,825

The following schools have increased their class base by adding the following bulge classes to the year groups as detailed below:

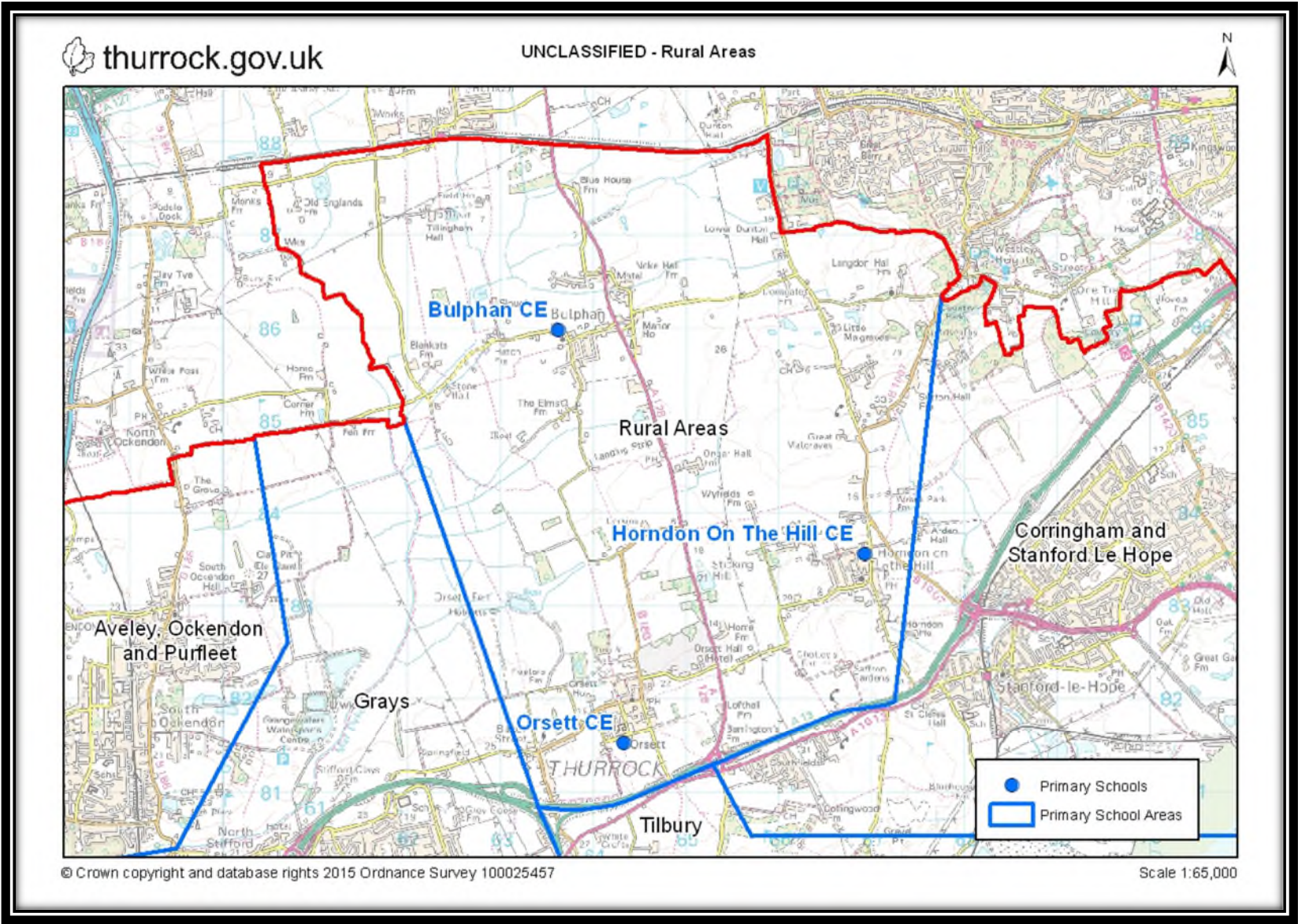
- Abbots Hall Primary Academy Year 1 and Year 4
- Giffards Primary Year 5

The bulge classes are not included in the Published Admission Number (PAN).

The above forecasts include the child yield exceeding 20 pupils from developments at:

- land adjacent to St Clere's School, railway line and Butts Lane
- land to the rear of Caldwell Road, Kingsman Road and adjacent to the A1013
- land adjacent to the railway line, Manorway and west of Victoria Road – proposed
- land adjacent to the railway line and Southend Road – proposed

Rural area map



Rural forecasts

Bold red cells indicate projected numbers exceed the Published Admission Number (PAN).

Rural schools	PAN	Reception forecast				
		Sep-21	Sep-22	Sep-23	Sep-24	Sep-25
Bulphan	12	21	20	19	13	17
Horndon on the Hill	30	24	27	16	17	20
Orsett	30	29	21	16	38	25
In-year admissions		1	1	1	1	1
Totals	72	75	69	52	69	63

Rural schools	PAN	Whole school forecast				
		Sep-21	Sep-22	Sep-23	Sep-24	Sep-25
Bulphan	84	94	105	123	135	146
Horndon-on-the-Hill	210	194	191	177	167	157
Orsett	210	207	197	182	192	187
In-year admissions		7	7	7	7	7
Totals	504	502	500	489	501	497

There are no class base increases in this planning area.

The above forecasts include the child yield exceeding 20 pupils from developments at:

- Little Malgraves Farm, Lower Dunton Road

Primary forecast summary

The pressure in the primary phase is being managed and will continue to be monitored regularly and closely.

The inward migration experienced in recent years had a more significant impact on primary places than secondary places. This may have been because we had capacity in our secondary schools which could absorb the newcomers or it may be that the families arriving in Thurrock had younger children.

Thurrock primary whole school numbers have increased by 21% since autumn 2012, which equates to a 3,012 pupil increase. However, the autumn school census for October 2019 and 2020 is showing a significant decrease in the amount of extra primary pupils when compared to the last 5 years.

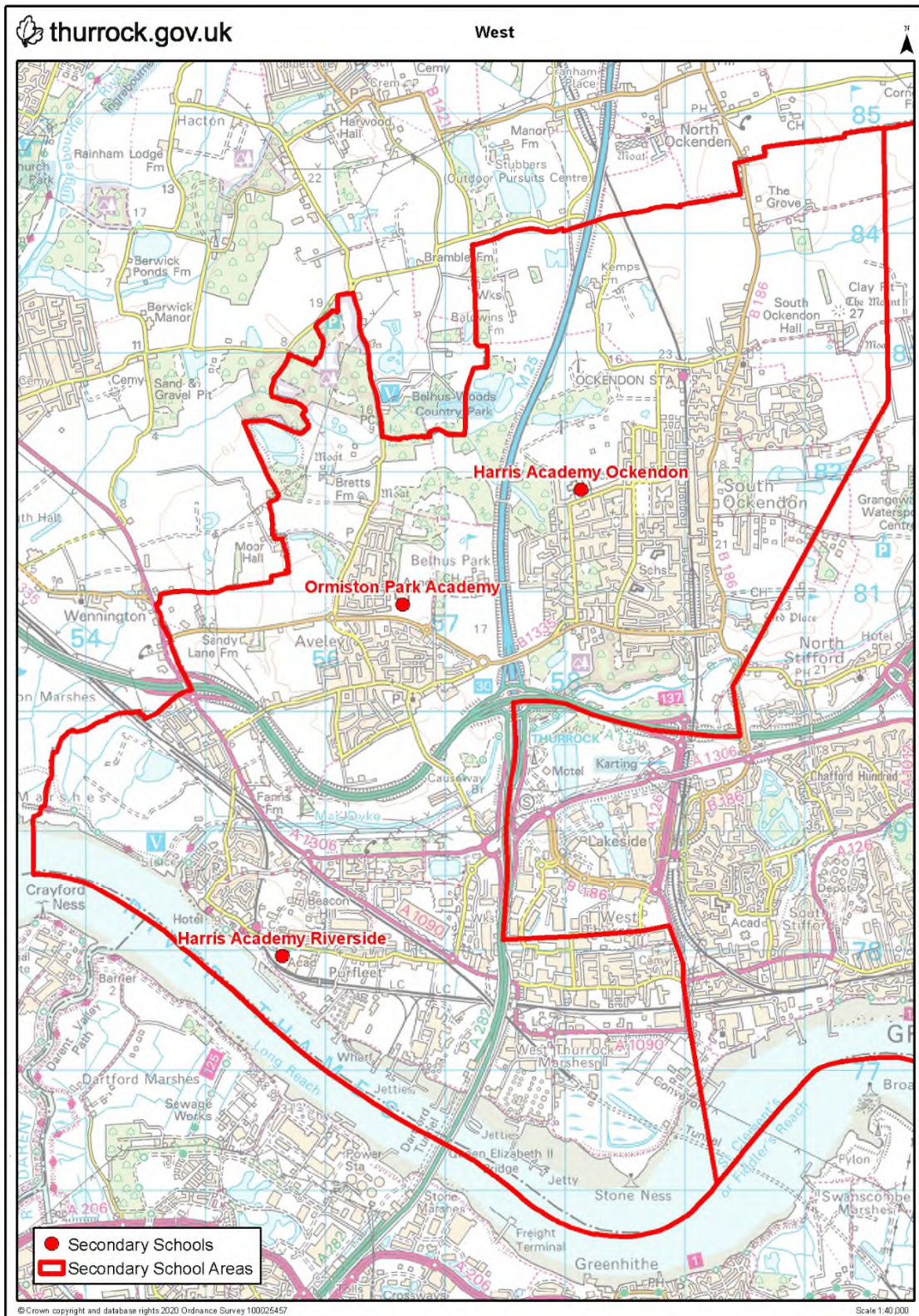
Secondary forecasts

Whole school forecasts for each secondary planning area has been calculated using formulae to calculate the transition rate from year 6 to year 7 and the current numbers on roll in schools on the census data from October 2020 and by also adding the pupil yield from any developments and then adding an additional element of places to cater for in-year admissions.

This degree of additional places is required to enable schools to absorb the number of pupils we anticipate will arrive in Thurrock from elsewhere in the UK and abroad in the September 2021/22 academic year and beyond. The impact of inward migration will be closely monitored and forecasts adjusted accordingly.

Full details of the methodology used to determine the pupil place forecasts for the secondary phase are set out in Annex 1.

West Planning Area map



West Planning Area forecasts

Bold red cells indicate projected numbers exceed the Published Admission Number (PAN).

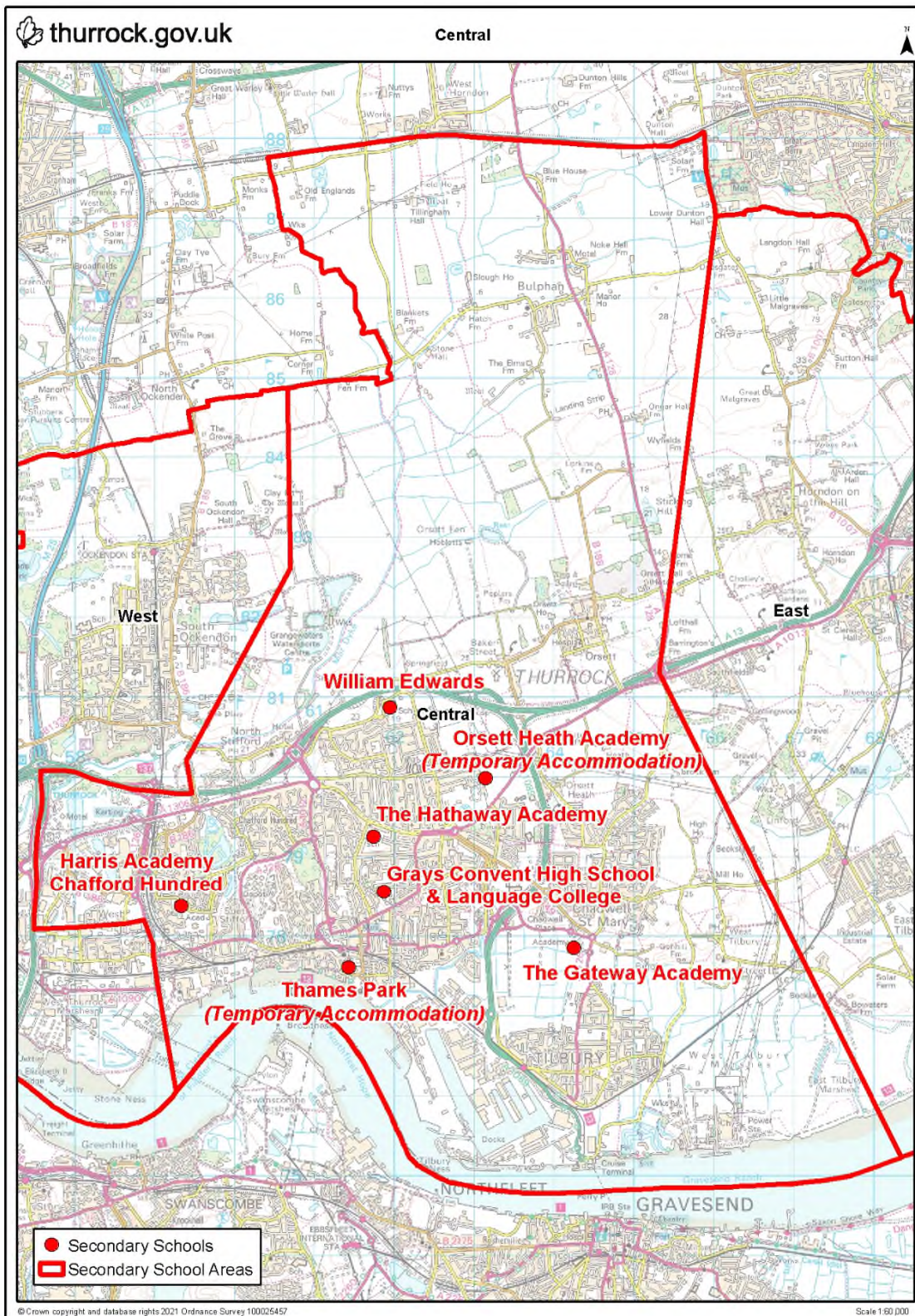
West Planning Area schools	PAN	Year 7 forecast				
		Sep-21	Sep-22	Sep-23	Sep-24	Sep-25
Harris Academy Riverside	180	180	191	193	184	186
Ormiston Park Academy	150	125	132	134	128	129
Harris Academy Ockendon	240	244	258	261	250	252
In-year admissions		8	9	9	8	9
Totals	570	556	590	597	570	577

West Planning Area schools	PAN	Whole school forecast				
		Sep-21	Sep-22	Sep-23	Sep-24	Sep-25
Harris Academy Riverside	900	817	883	953	952	961
Ormiston Park Academy	750	652	681	673	661	665
Harris Academy Ockendon	1,200	1,207	1,248	1,281	1,298	1,311
In-year admissions		40	42	44	44	44
Totals	2,850	2,715	2,855	2,951	2,956	2,982

The above forecasts include the child yield exceeding 20 pupils from developments at:

- Mill Road
- former Ford Factory, Arisdale Avenue
- Aveley village extension south of B1335
- Purfleet Centre site
- Culver Centre site, Daiglen Drive – proposed

Central Planning Area map



Central Planning Area forecasts

Bold red cells indicate projected numbers exceed the Published Admission Number (PAN).

Central Planning Area schools	PAN	Year 7 forecast				
		Sep-21	Sep-22	Sep-23	Sep-24	Sep-25
Grays Convent	124	124	131	133	127	128
Harris Academy Chafford Hundred	180	180	191	193	184	186
The Gateway Academy	215	211	223	226	216	218
The Hathaway Academy	180	94	99	101	96	97
William Edwards	250	241	255	258	247	249
Thames Park	120	111	117	119	114	115
Orsett Heath	120	121	128	129	124	125
In-year admissions		13	13	14	13	13
Totals	1,189	1,094	1,157	1,172	1,122	1,132

Central Planning Area schools	PAN	Whole school forecast				
		Sep-21	Sep-22	Sep-23	Sep-24	Sep-25
Grays Convent	620	660	667	676	653	643
Harris Academy Chafford Hundred	900	969	989	1,008	997	1,012
The Gateway Academy	1,075	1,086	1,099	1,126	1,113	1,131
The Hathaway Academy	900	715	663	605	538	551
William Edwards	1,250	1,259	1,272	1,257	1,256	1,266
Thames Park	600	222	339	458	571	575
Orsett Heath	600	242	370	499	623	627
In-year admissions		70	70	70	68	69
Totals	5,945	5,222	5,470	5,698	5,820	5,874

The following schools have increased their class base by adding the following bulge classes to the year groups as detailed below:

- Grays Convent Year 8
- Harris Academy Chafford Hundred Year 8 and Year 11
- William Edwards Year 9

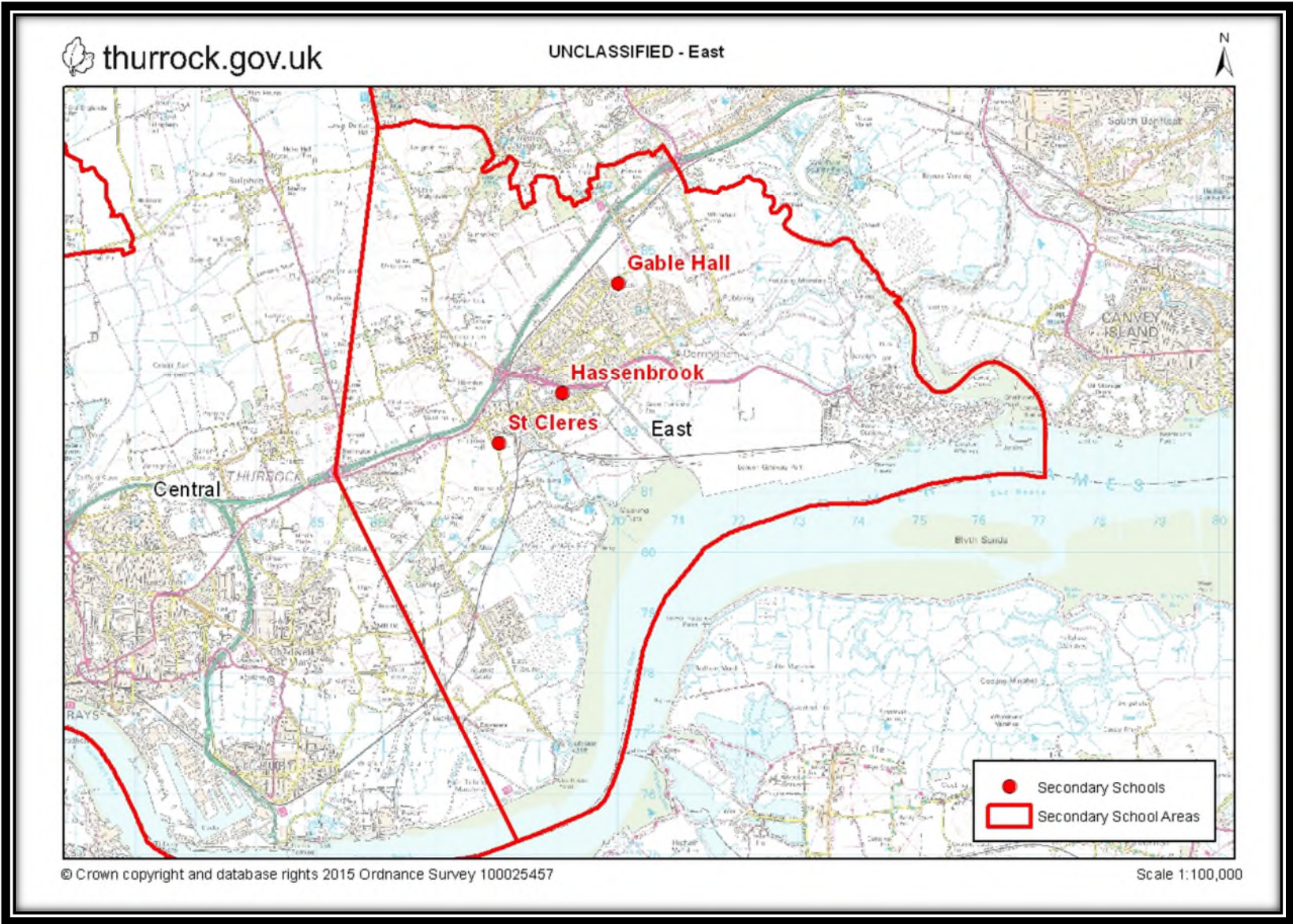
The above forecasts include the child yield exceeding 20 pupils from developments at:

- William Ball site, Gumley Road
- Grays Gas Holder site, London Road
- land south of West Thurrock Way
- Thurrock Woodview Campus
- former St Chad's School

- Star Industrial Estate, Linford Road – proposed
- Arena Essex site – proposed

Once Orsett Heath Academy and Thames Park Secondary move to their permanent location, the PAN for Orsett Heath Academy will be 240 and Thames Park Secondary will be 180.

East Planning Area map



East Planning Area forecasts

Bold red cells indicate projected numbers exceed the Published Admission Number (PAN).

East Planning Area schools	PAN	Year 7 forecast				
		Sep-21	Sep-22	Sep-23	Sep-24	Sep-25
ORTU Gable Hall	272	192	203	205	197	199
ORTU Hassenbrook Academy	150	128	135	137	131	132
St Clere's	240	260	275	278	266	269
In-year admissions		9	9	9	9	9
Totals	662	588	623	629	603	609

East Planning Area schools	PAN	Whole school forecast				
		Sep-21	Sep-22	Sep-23	Sep-24	Sep-25
ORTU Gable Hall	1,360	1,136	1,085	1,057	989	1,016
ORTU Hassenbrook Academy	750	544	601	646	659	664
St Clere's	1,200	1,407	1,461	1,373	1,388	1,404
In Year Admissions		46	47	46	46	46
Totals	3,310	3,132	3,194	3,122	3,081	3,130

The following schools have increased their class base by adding the following bulge classes to the year groups as detailed below:

- ORTU Hassenbrook Year 8
- St Clere's Year 8 and Year 9 x 5 form entry.

The above forecasts include the child yield exceeding 20 pupils from developments at:

- land adjacent St Clere's School, railway line and Butts Lane
- land adjacent to the railway line, Manorway and West of Victoria Road
- Bata Field land adjacent to Bata Avenue and to the rear of 201 to 251 Princess Margaret Road
- land adjacent to the railway line and Southend Road – proposed

Secondary forecast summary

With the number of primary pupils moving into the secondary sector, the demand for secondary places is increasing and will continue to do so over the next few years.

Council-wide issues

The two main factors for pupil increases in both the primary and secondary phases are the increase in birth rate and the amount of in-year applications. The table below details the increases of in-year applications outside the normal admission rounds.

Academic year	Number of children applying for a primary/secondary school place outside of the normal admission round who arrived in Thurrock from abroad.	Number of children applying for a primary/secondary school place outside of the normal admission round who arrived in Thurrock from elsewhere in the UK.	Total
2013/14	310	751	1,061
2014/15	382	949	1,331
2015/16	311	990	1,301
2016/17	250	1,096	1,346
2017/18	250	1,035	1,285
2018/19	191	1,097	1,288
2019/20	190	1,063	1,253
2020/21	247	984	1,231

Planning for the children arriving in Thurrock is difficult as we do not know who they are, how old they are, and therefore, which year groups they will apply for until they make contact with School Admissions. Some may require Reception and Year 7 places, but many will require places in other year groups. This introduces the potential of bulge classes in year groups other than Reception and Year 7 as we have experienced in recent years.

With the unpredictable demand for places from outside of Thurrock an additional element of pupil places has been added to each planning area within Thurrock.

Annex 1 – pupil place forecasting methodology

The statutory obligation for all local councils is to provide sufficient school places. Thurrock Council regularly reviews all data, trends and builds a robust analysis of pupil planning to ensure a place for all pupils that live in Thurrock either at normal admission rounds or the unforeseen “in-year” admissions.

Thurrock experiences high levels of in-year applications which has put pressure on school places but with the excellent relationships we have with our Schools and Academies, Thurrock Council has been able to continue to meet this demand.

Primary forecasts

Thurrock Council uses live birth data provided by the National Health Service which forms the basis of calculating the place requirements four years later. This data contains post codes where the child lives which are then allocated to the nearest school in that area to calculate places required in that schools planning area.

Whole school forecasts are based on pupil census data; this provides actual pupil numbers in each year group. The number of children calculated from any building development is added to this to then calculate the number of school places required. An element of additional places is then added to cater for in-year admissions.

The building developments which produce over 20 pupils are taken into consideration in this edition of the PPP document and are listed under each planning area.

There is a project team made up of officers from various departments within the council that play a part in PPP that meet monthly to review forecasts and any emerging issues. This allows the council to be proactive in taking any necessary action to meet growing pressures for school places.

Secondary forecasts

With the high level of primary school places we have we know that these will feed through to our secondary schools. When calculating year 7 forecasts we use existing primary numbers. Using trend data we have used a transfer rate of 90.5%, meaning 9.5% of our children go to school outside of the Thurrock area.

Thurrock has no secondary provision for Catholic boys who tend to move out of the area to attend a Catholic secondary school.

The Year 7 forecasts in this document were arrived at by examining the conversion rate from Year 6 to Year 7 for the last three years. This is the number of Thurrock Year 6 pupils who went on to become Year 7 students.

Having established the predicted number of Year 7 students for each school, we then address the child yield from housing developments.

We know the predicted number of children in each area that are likely to arise from developments but we cannot know how old they will be or which year group they will require. We therefore assume that some of the children generated by new developments will require primary places and some secondary places.

A number of places are therefore added to the whole school predictions for both primary and secondary at the schools in the areas where the development is due to take place. If a major development falls between two or more schools the child yield is divided between the schools.

Migration

Thurrock is still experiencing increases in the number of children applying for a school place 'In Year'. These arrivals during the academic year are difficult to manage as we do not know how many of each age group will arrive. The extent of inward migration in recent years indicates that 5% of school places are required in the primary phase and 3% are required in the secondary phase to ensure that the new arrivals can be accommodated.

The forecasts are not constrained by the physical accommodation available in the schools in the planning area and therefore indicate where pressure on places is likely to arise.

Pupil migration

Thurrock is a net exporter of pupils. The numbers both in and out of Thurrock for receptions and year 7 are listed below. The percentages listed are comparing these numbers against September 2021 actual on time applications numbers for reception and Year 7. These numbers only relate to the normal admission round.

Primary:

- 15 children are expected to come in to the LA +.6% by September 2021
- 53 children expected to go outside of the LA -2.2 % by September 2021

Secondary:

- 31 children are expected to come in to the LA +1.3% by September 2021
- 225 children are expected to go outside of the LA -9.5% by September 2021

Annex 2 – special educational needs and disability (SEND)

An education, health and care (EHC) plan is for children and young people aged up to 25 who need more support than is available through special educational needs support.

EHC plans identify educational, health and social needs and set out the additional support to meet those needs.

More information about special educational needs support and EHC plans is available at:

- www.thurrock.gov.uk/sen
- www.thurrock.gov.uk/education-health-and-care-needs
- www.askthurrock.org.uk

Provision

The council has two special schools in the borough

School	Status	Needs met	Age range	Number of places
Beacon Hill Academy	Academy	Severe and profound learning difficulties	3 to 19	75
Treetops Academy	Academy	Moderate learning difficulties and Autism	3 to 19	309

Beacon Hill Academy is a special school in South Ockendon for pupils who have severe and complex learning difficulties. Beacon Hill Post 16 provision caters for students with severe and profound and multiple learning difficulties from 16 to 19.

This provision is located on the shared site with Treetops School in Grays. Students follow a personalised, accredited curriculum which promotes independence and transition to lifelong learning in the community.

Treetops School is a day special school academy in Grays for pupils between the ages of 3 and 19. The school caters for children and young people with moderate learning difficulties and Autism.

A new Special Free School has been agreed by the Education Funding Agency and is in development. The school will be located on a site adjacent to the existing Treetops School. The new Treetops Academy is planned to open in the academic year 2021/22.

The numbers of commissioned places in the Special Schools and Resource Bases are agreed between the council and the schools on an annual basis. There is potential opportunity for additional places to be commissioned by the local authority as required and where possible during the academic year.

In addition to the special schools there are a number of mainstream schools with specialist provision in the Primary Sector, as listed in the table below.

School	Type of provision	Age range	Number of places
Warren Primary	Resource base for pupils with hearing impairment	4 to 11	18
Stanford-le-Hope Primary Academy	Resource nursery base for pupils with visual impairment	Nursery 3 to 5	3
Corringham Primary Academy	Resource base for pupils with speech and language difficulties	4 to 11	20
Harris Primary Academy Chafford Hundred	ICAN resource base for children with speech, language and communication needs	Nursery 3 to 5	3 full-time equivalent
Dilkes Primary Academy	Resource base for pupils with social, emotional and mental health difficulties	4 to 11	10
Lansdowne Primary Academy	Resource base for pupils with social communication /moderate learning difficulties	4 to 11	8
Quarry Hill Academy	Resource base for pupils with social, emotional and mental health difficulties	4 to 11	10
East Tilbury Primary Academy	Inclusion Base	4 to 11	10
Thameside Primary Academy	Inclusion Base	4 to 11	6

Secondary phase schools with specialist provision are listed below.

School	Type of provision	Age range	Number of places
Ormiston Park Academy (ASCEND)	Resource base for pupils with social, emotional and mental health difficulties	11 to 19	30
Harris Academy Chafford Hundred	Resource Base for pupils with speech, language and communication needs and autism	11 to 19	20
St Clere's School	Resource Base for pupils with visual and hearing impairment.	11 to 19	17

Support is offered to students with special needs post 16 years at South Essex College, Palmers campus of USP College, and Thurrock Adult Community College.

Annex 3 – provision for pupils out of school

Thurrock has two Primary Inclusion Bases for pupils who have been permanently excluded or are at risk of permanent exclusion to provide direct support for these pupils and to support their re-integration into mainstream school. The inclusion bases are at East Tilbury Primary School and Thameside Primary School, both of which are primary academies and part of the Osborne Multi Academy Trust.

The Olive Alternative Provision Academy based in Tilbury provides a secondary offer for pupils because of exclusion, illness or other reasons, would not otherwise receive a suitable education. The service provides a range of different interventions to support young people to reengage with mainstream provision.

Admission to the service is by referral only. All referrals are made via the council's Access and Inclusion Service.

Further information on the Olive AP Academy can be obtained from the council's website.

Annex 4 – post-16 provision

The 2008 Education Act raised the age of participation for young people in The 2008 ESA (Education Skills Act) raised the age of participation for young people in England. Those born on or after 1st September 1997 must remain in some form of education or training until their 18th birthday. This may be:

- full time education at school or college,
- an apprenticeship or traineeship,
- part-time education or training as well as being employed, self-employed or volunteering for 20 hours per week or more.

Thurrock Council works closely in partnership with schools, colleges and other providers to plan provision for post 16 education and training. Young people can pursue a wide range of both academic and vocational courses in a range of settings.

Five secondary schools in Thurrock currently offer post-16 education; ORTU Gable Hall, ORTU Hassenbrook and St Clere's schools form the Stanford and Corringham Sixth Form consortium and between them provide a range of academic and vocational courses.

Harris Academy Ockendon School and Sixth form is a 14-to-19 school offering a range of academic and vocational qualifications at Sixth Form, in addition to a variety of information, guidance and self-development opportunities. Further information is available on the academy website. The PAN for Sixth Form at Harris Academy Ockendon is 300.

Harris Academy Chafford Hundred and Harris Riverside offers a 6th form provision which has a range of academic and vocational opportunities for young people, information on all the courses is available via the schools website.

The table below provides the number of students in Thurrock sixth forms at October 2020.

Governance	School	12	13	14	Post-16 Total
CA	Stanford and Corringham sixth form	111	97		208
VA	Grays Convent				
CA	Harris Academy Chafford Hundred	240	187		427
CA	Harris Academy Riverside	89	55		144
CA	Ormiston Park Academy				
CA	The Gateway Academy				
CA	The Hathaway Academy				
CA	Harris Academy Ockendon	51	43		94
CA	William Edwards School				
	Totals	412	331		873

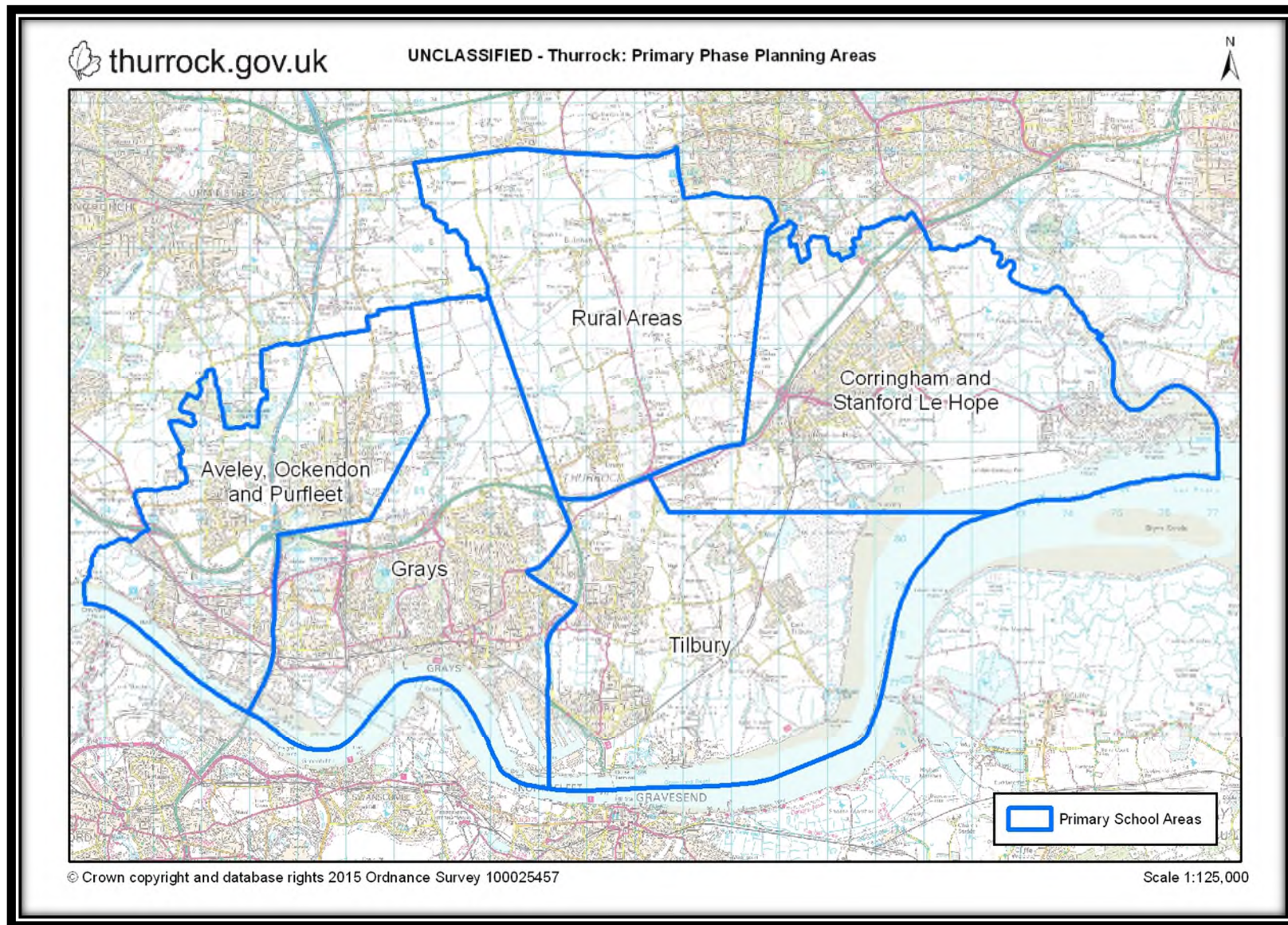
Unified Seevic Palmers (USP), A merger of Palmer's Sixth Form College in Grays and South East Essex Sixth Form College (Seevic) College in Benfleet, offers a range of A Level, BTEC and secretarial courses to over 5,000 students. Find out more about the courses on offer on the college website, www.uspcollege.ac.uk

South Essex College of Further and Higher Education Thurrock Campus offers a wide range of training opportunities which lead to accredited qualifications. Young people can study anything from bricklaying to costume design (in partnership with the Royal Opera House, High House Productions). They also provide a small number of higher education programmes in partnership with University of East Anglia and University of Arts London. Go to www.southessex.ac.uk

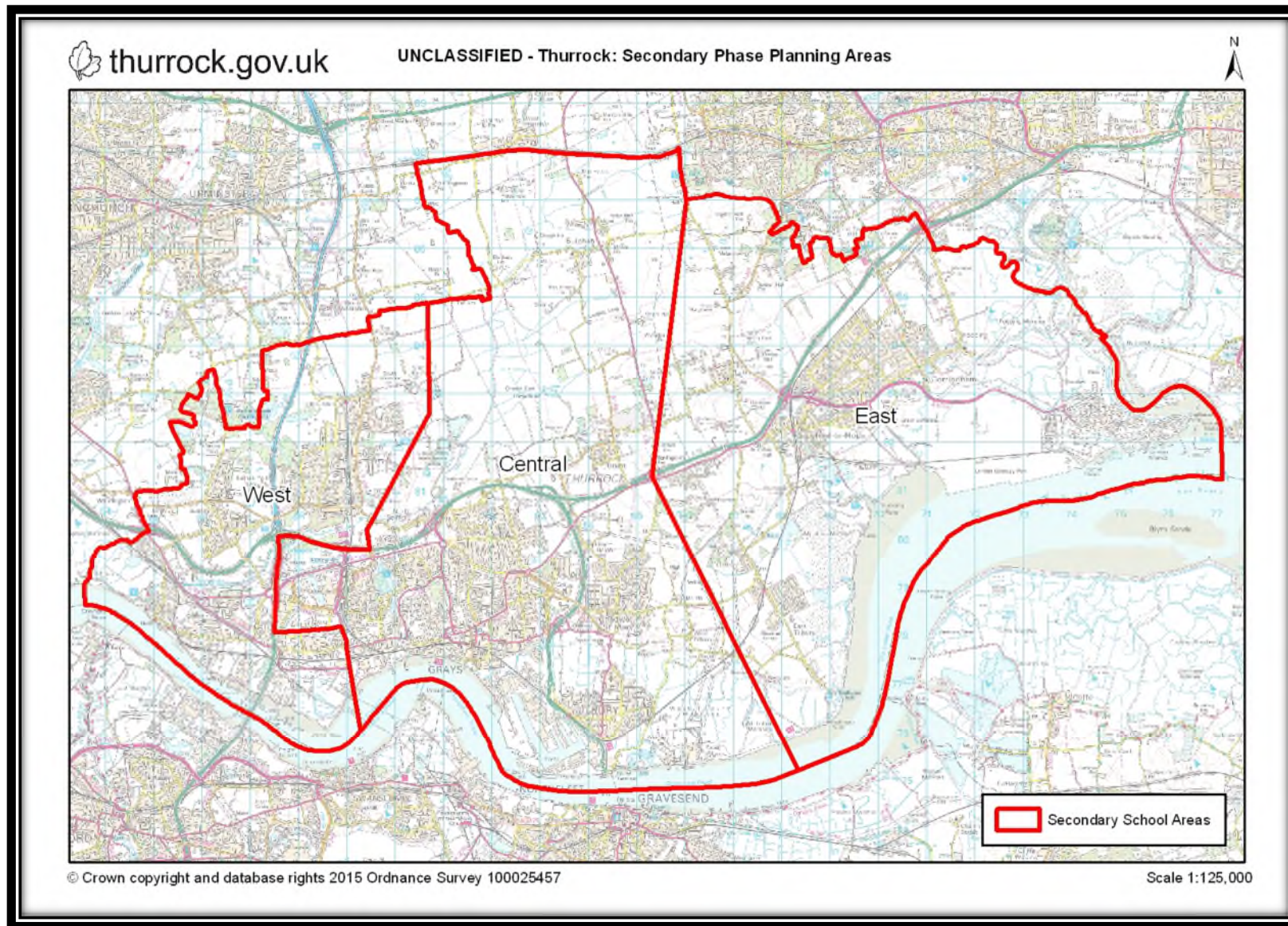
Thurrock has two special schools with a post-16 offer: Treetops and Beacon Hill. Information is available via their websites:

- Treetops School – treetopsschool.org
- Beacon Hill Academy – beaconhill.thurrock.sch.uk/post-16

Annex 5 – map primary phase planning areas



Annex 6 – map secondary phase planning areas



Annex 7 – primary forecast reception

Bold red cells indicate projected numbers exceed the Published Admission Number (PAN).

Aveley, Ockendon and Purfleet-on-Thames schools	PAN	Reception forecast				
		Sep-21	Sep-22	Sep-23	Sep-24	Sep-25
Aveley	60	62	67	72	48	62
Benyon	60	39	40	67	49	50
Bonnygate	60	57	59	55	47	54
Dilkes	60	65	78	54	54	62
Holy Cross	30	30	30	30	30	30
Kenningtons	60	81	61	94	60	72
Purfleet	90	73	54	69	53	60
Shaw	60	55	42	52	32	43
Somers Heath	60	63	74	61	55	61
In-year admissions		8	8	8	6	7
Totals	540	533	513	562	434	501

Grays schools	PAN	Reception forecast				
		Sep-21	Sep-22	Sep-23	Sep-24	Sep-25
Belmont Castle	90	97	89	90	86	88
Deneholm	60	67	71	69	51	64
Harris Chafford Hundred	90	97	75	71	81	76
Harris Mayflower	150	151	120	119	127	122
Little Thurrock	90	99	123	84	110	104
Quarry Hill	60	58	71	71	69	67
St Thomas'	90	79	79	79	79	79
Stifford Clays	90	64	59	76	62	65
Thameside	120	100	106	99	83	96
Tudor Court	90	85	77	87	83	82
Warren	60	38	36	48	29	38
West Thurrock	60	61	56	54	46	52
In-year admissions		15	14	14	14	14
Totals	1050	1,011	976	961	920	947

Tilbury schools	PAN	Reception forecast				
		Sep-21	Sep-22	Sep-23	Sep-24	Sep-25
Chadwell St Mary	30	24	26	22	24	24
East Tilbury	120	109	144	146	143	136
The Gateway Free School	60	45	55	51	43	49
Herringham	60	59	55	62	53	57
Lansdowne	90	81	76	76	80	77
St Mary's	30	30	30	30	30	30
Tilbury Pioneer	60	54	71	56	57	60
Woodside	90	92	82	95	107	94
In-year admissions		7	8	8	8	8
Totals	540	501	547	546	545	535

Corringham and Stanford le Hope schools	PAN	Reception forecast				
		Sep-21	Sep-22	Sep-23	Sep-24	Sep-25
Abbots Hall	60	31	31	26	24	27
Arthur Bugler	60	43	52	52	44	48
Corringham	60	76	59	86	66	70
Giffards	60	90	69	76	69	71
Graham James	60	51	89	56	72	67
St Joseph's	30	26	26	26	26	26
Stanford-le-Hope	60	79	66	71	67	68
In Year Admissions		6	6	6	6	6
Totals	390	402	398	399	374	383

Rural schools	PAN	Reception forecast				
		Sep-21	Sep-22	Sep-23	Sep-24	Sep-25
Bulphan	12	21	20	19	13	17
Horndon on the Hill	30	24	27	16	17	20
Orsett	30	29	21	16	38	25
In-year admissions		1	1	1	1	1
Totals	72	75	69	52	69	63

Annex 8 – primary forecast whole school

Bold red cells indicate projected numbers exceed the Published Admission Number (PAN).

Aveley, Ockendon and Purfleet-on-Thames schools	PAN	Whole school forecast				
		Sep-21	Sep-22	Sep-23	Sep-24	Sep-25
Aveley	420	462	460	457	445	447
Benyon	420	289	305	349	360	380
Bonnygate	420	413	420	422	416	412
Dilkes	420	456	473	467	461	463
Holy Cross	210	209	210	210	210	210
Kenningtons	420	427	416	460	461	479
Purfleet	630	562	534	545	530	531
Shaw	420	405	393	392	374	368
Somers Heath	420	413	427	430	427	429
In-year admissions		55	55	56	55	56
Totals	3,780	3,691	3,693	3,788	3,739	3,775

Grays schools	PAN	Whole school forecast				
		Sep-21	Sep-22	Sep-23	Sep-24	Sep-25
Belmont Castle	630	677	700	719	732	741
Deneholm	420	422	433	445	438	442
Harris Chafford Hundred	630	629	617	600	592	578
Harris Mayflower	1,050	932	962	932	938	940
Little Thurrock	630	624	657	652	677	694
Quarry Hill	420	424	438	453	464	472
St Thomas'	630	598	589	580	570	562
Stifford Clays	630	585	554	540	515	495
Thameside	840	786	782	767	750	744
Tudor Court	630	748	708	680	645	613
Warren	420	392	376	377	361	366
West Thurrock	420	415	433	458	464	464
In-year admissions		108	109	108	107	107
Totals	7,350	7,340	7,358	7,311	7,253	7,218

Tilbury schools	PAN	Whole school forecast				
		Sep-21	Sep-22	Sep-23	Sep-24	Sep-25
Chadwell St Mary	210	202	199	191	185	179
East Tilbury	840	686	743	791	846	895
Gateway	420	401	396	389	372	363
Herringham	420	414	409	411	406	404
Lansdowne	630	612	604	593	589	576
St Mary's	210	210	210	210	210	210
Tilbury Pioneer	420	436	452	421	420	420
Woodside	630	649	642	647	664	668
In-year admissions		54	55	55	56	56
Totals	3,780	3,664	3,710	3,708	3,747	3,771

Corringham and Stanford-le-Hope schools	PAN	Whole school forecast				
		Sep-21	Sep-22	Sep-23	Sep-24	Sep-25
Abbots Hall	420	254	254	231	227	224
Arthur Bugler	420	406	397	389	373	362
Corringham	420	428	427	453	464	473
Giffards	420	469	447	462	482	534
Graham James	420	410	440	435	451	458
St Joseph's	210	197	193	191	189	185
Stanford-le-Hope	420	430	447	483	520	547
In-year admissions		39	39	40	41	42
Totals	2,730	2,633	2,644	2,684	2,747	2,825

Rural schools	PAN	Whole school forecast				
		Sep-21	Sep-22	Sep-23	Sep-24	Sep-25
Bulphan	84	94	105	123	135	146
Horndon-on-the-Hill	210	194	191	177	167	157
Orsett	210	207	197	182	192	187
In-year admissions		7	7	7	7	7
Totals	504	502	500	489	501	497

All schools	PAN	Sep-21	Sep-22	Sep-23	Sep-24	Sep-25
Primary numbers	18,144	17,567	17,640	17,745	17,753	17,849
In-year admissions		263	265	266	266	268
Totals	18,144	17,830	17,905	18,011	18,019	18,117

Annex 9 – secondary forecast year 7

Bold red cells indicate projected numbers exceed the Published Admission Number (PAN).

West Planning Area schools	PAN	Year 7 forecast				
		Sep-21	Sep-22	Sep-23	Sep-24	Sep-25
Harris Academy Riverside	180	180	191	193	184	186
Ormiston Park Academy	150	125	132	134	128	129
Harris Academy Ockendon	240	244	258	261	250	252
In-year admissions		8	9	9	8	9
Totals	570	556	590	597	570	577

Central Planning Area schools	PAN	Year 7 forecast				
		Sep-21	Sep-22	Sep-23	Sep-24	Sep-25
Grays Convent	124	124	131	133	127	128
Harris Academy Chafford Hundred	180	180	191	193	184	186
The Gateway Academy	215	211	223	226	216	218
The Hathaway Academy	180	94	99	101	96	97
William Edwards	250	241	255	258	247	249
Thames Park	120	111	117	119	114	115
Orsett Heath	120	121	128	129	124	125
In-year admissions		13	13	14	13	13
Totals	1,189	1,094	1,157	1,172	1,122	1,132

East Planning Area schools	PAN	Year 7 forecast				
		Sep-21	Sep-22	Sep-23	Sep-24	Sep-25
ORTU Gable Hall	272	192	203	205	197	199
ORTU Hassenbrook Academy	150	128	135	137	131	132
St Clere's	240	260	275	278	266	269
In-year admissions		9	9	9	9	9
Totals	662	588	623	629	603	609

Annex 10 – secondary forecast whole school

Bold red cells indicate projected numbers exceed the Published Admission Number (PAN).

West Planning Area schools	PAN	Whole school forecast				
		Sep-21	Sep-22	Sep-23	Sep-24	Sep-25
Harris Academy Riverside	900	817	883	953	952	961
Ormiston Park Academy	750	652	681	673	661	665
Harris Academy Ockendon	1,200	1,207	1,248	1,281	1,298	1,311
In-year admissions		40	42	44	44	44
Totals	2,850	2,715	2,855	2,951	2,956	2,982

Central Planning Area schools	PAN	Whole school forecast				
		Sep-21	Sep-22	Sep-23	Sep-24	Sep-25
Grays Convent	620	660	667	676	653	643
Harris Academy Chafford Hundred	900	969	989	1,008	997	1,012
The Gateway Academy	1,075	1,086	1,099	1,126	1,113	1,131
The Hathaway Academy	900	715	663	605	538	551
William Edwards	1,250	1,259	1,272	1,257	1,256	1,266
Thames Park	600	222	339	458	571	575
Orsett Heath	600	242	370	499	623	627
In-year admissions		70	70	70	68	69
Totals	5,945	5,222	5,470	5,698	5,820	5,874

East Planning Area schools	PAN	Whole school forecast				
		Sep-21	Sep-22	Sep-23	Sep-24	Sep-25
ORTU Gable Hall	1,360	1,136	1,085	1,057	989	1,016
ORTU Hassenbrook Academy	750	544	601	646	659	664
St Clere's	1,200	1,407	1,461	1,373	1,388	1,404
In Year Admissions		46	47	46	46	46
Totals	3,310	3,132	3,194	3,122	3,081	3,130

All schools	PAN	Sep-21	Sep-22	Sep-23	Sep-24	Sep-25
Secondary numbers	12,105	10,913	11,359	11,612	11,699	11,827
In-year admissions		156	159	160	158	159
Totals	12,105	11,069	11,518	11,772	11,857	11,986