

# RIGHTS OF WAY

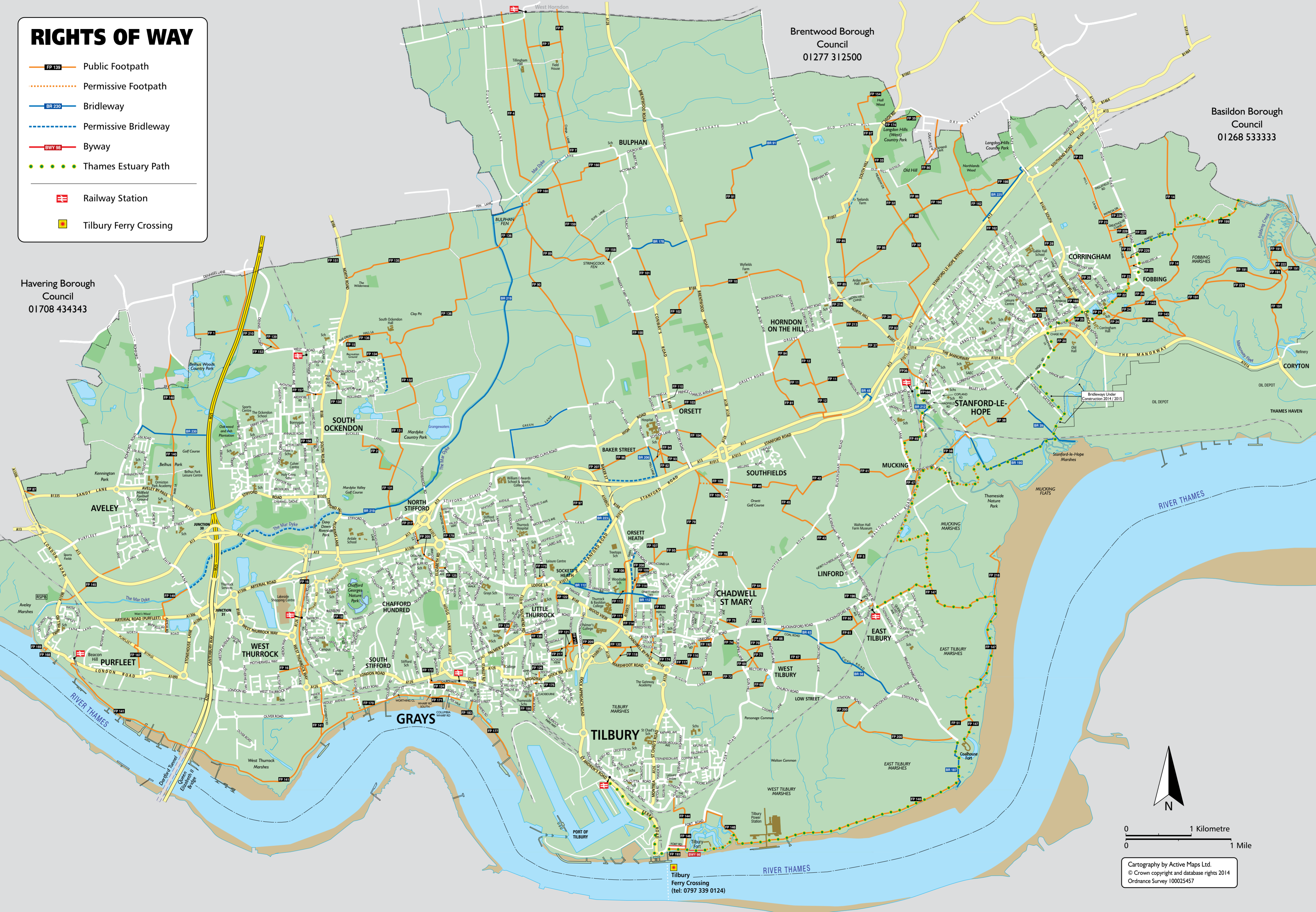
- FP 139 Public Footpath
- Permissive Footpath
- BR 230 Bridleway
- Permissive Bridleway
- BWY 66 Byway
- Thames Estuary Path

- Railway Station
- Tilbury Ferry Crossing

Havering Borough Council  
01708 434343

Brentwood Borough Council  
01277 312500

Basildon Borough Council  
01268 533333



0 1 Kilometre  
0 1 Mile

Cartography by Active Maps Ltd.  
© Crown copyright and database rights 2014  
Ordnance Survey 100025457

Tilbury Ferry Crossing  
(tel: 0797 339 0124)



Rainham Marshes RSPB Nature Reserve



Thurrock Thameside Nature Park



Coalhouse Fort, Tilbury



Chafford Gorges Nature Park

**Thurrock Council – All Departments**

Contact Centre	01375 652652
Transport/Travel	01375 413883
Rights of way	01375 652306

**Others**

Thurrock Local Access Forum	01375 652306
(via Thurrock Council)	
Ramblers Association (Local Rep)	01375 642785
Essex Bridleways Association	01375 672487
Thurrock Cycle Forum	01375 652006
Sustrans	08451 130065
National Farmers Union	08708 458458
Thames Chase	01708 641880
Woodland Trust	08000 269650
Vitality	0800 0778000
Change4life	01375 898113

**Places of Interest**

Tilbury Fort	01375 858489
Coalhouse Fort	01375 844203
Belhus Park	01708 865628
RSPB Purfleet/Rainham	01708 899840
Langdon Hills Country Park	
Ranger Service	01268 542066
Grangewaters	01708 855228
Thurrock Thameside Nature Park	01375 643342
Chafford Gorges	01375 484016

# Thurrock Rights of Way



Thurrock Rights of Way Map 2014

**Thurrock Local Access Forum**  
[public.rightsofway@thurrock.gov.uk](mailto:public.rightsofway@thurrock.gov.uk)

Thurrock's Local Access Forum (LAF) has been established under the terms of the Countryside and Rights of Way Act 2000. The Forum represents landowners, cyclist, horse riders, walkers and other interested parties such as the Royal Society for the Protection of Birds RSPB and the Council for the Protection of Rural England CPRE. The function of the Forum is to advise Thurrock Council of public opinion and concerns regarding "public access", especially in protecting and improving the Public Rights of Way network throughout Thurrock for future generations.

**The Ramblers Association**  
[www.ramblers.org.uk](http://www.ramblers.org.uk)

Britain's biggest walking charity has been working for over 70 years to promote walking and to improve conditions for everyone who walks in England, Scotland and Wales.

**Essex Bridleway Association**  
[www.essexbridleways.co.uk](http://www.essexbridleways.co.uk)  
[jennifermann@btinternet.com](mailto:jennifermann@btinternet.com) (local rep)

The EBA is a registered charity formed in 1979 to enable horse and pony riders, walkers and countryside users in Essex to:

- Preserve and maintain existing bridleways
- Restore old rights of way, many of which have been lost through incorrect classification and are not registered on the Definitive Map

- Create new bridleways.

**Sustrans**  
[www.sustrans.co.uk](http://www.sustrans.co.uk)

Sustrans is the UK's leading sustainable transport charity. Its vision is a world in which people can choose to travel in ways that benefit their health and the environment. They are working on practical, innovative ways of dealing with the transport challenges that affect us all.

**National Farmers Union**  
[www.nfuonline.com](http://www.nfuonline.com)

The NFU believe that a thriving, beautiful countryside is one of the most important aspects of our national heritage. We are determined to maintain it and to meet the challenge of producing wholesome, high quality food while protecting wildlife and the environment.

**Public Rights of Way Definitions**  
**Public Footpath**

In England and Wales a public footpath is a path on which the public have a legally protected right to travel on foot only.

**Bridleway**

A public bridleway is a way over which the public have the following, but no other rights:

- to travel on foot
- to travel on horseback or leading a horse, with or without a right to drive animals of any description along the way

- to ride a bicycle (but, in exercising that right, cyclists must give way to pedestrians and persons on horseback).

**Byway**

In the United Kingdom, a byway open to all traffic (BOAT) is a highway over which the public have a right of way for vehicular and all other kinds of traffic but which is used by the public mainly for the purpose for which footpaths and bridleways are used.

**Restricted Byways**

On 2 May 2006 the Countryside and Rights of Way Act 2000 reclassified all remaining Roads Used as Public Paths as restricted byways. The public's rights along a restricted byway are to travel:

- on foot
- on horseback or leading a horse
- by vehicle other than mechanically propelled vehicles (e.g. bicycles, horse-drawn carriages).

**Permissive Path**

A permissive path, or permitted path, is a path where the public does not have a legal right to travel, but where they have been granted permission to do so for the time being.

**Signage**  
**Waymarkers**



**Public Footpath**



**Bridleway**



**Byway**

● The Thames Estuary Path through Essex is an amazing path taking you past Thameside, forts, ancient churches, through Thames marshes and along the sea wall overlooking internationally important marshes and mudflats. From Tilbury to Southend it is approximately 30 miles, but the route has the advantage of being shadowed by C2C railway line with stations at Tilbury Town, East Tilbury, Stanford-le-Hope, Pitsea, Benfleet, Leigh, Chalkwell and Southend-on-Sea.