



# the play inspection company

---

## Annual Inspection

Thurrock Council

Corringham Town Park

Springhouse Road, Corringham, Essex, SS17 7NB



**API** Associate



Unit 5, Glenmore Business Park, Blackhill Road, Poole, Dorset, BH16 6NL  
t- 01202 590675 e- info@playinspections.co.uk

[www.playinspections.co.uk](http://www.playinspections.co.uk)

# Inspection Scope for RPII Inspection Methodology

This document outlines the RPII scope for inspections undertaken by the Inspectors listed as Annual Inspectors on the RPII Register of Inspectors when undertaking Indoor Annual, Outdoor Annual, Outdoor Operational and Outdoor Routine inspections.

Inspections are undertaken with reference to the standards listed in this preamble only; where no date for the standard is given it will be the standard that is current at the time of inspection except where overlap periods are granted by the standards committee when standards are updated. The information contained in reports is provided to assist the owner/operator in fulfilling their responsibilities as detailed in the relevant standard. Other standards referenced within the listed standards do not form part of the inspection, unless they are also explicitly listed here.

The following standards are relevant to all installations of equipment that are publicly accessible to users; this includes public parks, pay and play parks, schools, nurseries, public houses, holiday parks, indoor play centres, farm parks etc. All equipment used or employed in publicly accessible areas should meet with the requirements of the relevant standards (listed below):

BS EN 1176 Parts 1, 2, 3, 4, 5, 6, 10 & 11 Playground equipment intended for permanent installation outdoors & indoors.

BS EN 1176 Part 7 - 'Guidance on Installation, Inspection, Maintenance and Operation' (this document gives guidance to the owners/operators of the facility on the installation, inspection, maintenance and operation of playground equipment, excluding ancillary items).

In the United Kingdom the National Foreword forms an important part to the understanding and implementation of the recommendations set out in this document. It clarifies the application of the document within the UK as best practice guidance, as the document has been used since its initial publication. Therefore, in the UK this standard (BS EN 1176 – Part 7) contains no requirements and needs to be read and implemented as guidance, with the use of the term 'shall' therefore becoming a recommendation, as in the term 'should'.

Domestic play equipment falls outside of the scope of BS EN 1176 and has its own standards (BS EN 71 series – Safety of Toys). Where domestic equipment can be identified this will be acknowledged in the report but any comments concerning compliance will follow the requirements and recommendations of BS EN 1176.

When water play items, including spray parks, are inspected any comments concerning compliance within the inspection will refer to BS EN 1176. We have not assessed these against the requirements of BS EN 17232 (Water play equipment and features).

Other equipment that is not clearly identified as unsupervised or domestic (natural play, self-build equipment etc.) will be assessed for compliance with the relevant standard listed below:

**BS EN 15312** Free access multi-sports equipment  
**BS EN 14974** Skateparks  
**BS EN 16630** Permanently installed outdoor fitness equipment  
**BS EN 16899** Parkour equipment (plus RPII/API guidance notes)

Annual and Post Installation inspections will take into consideration compliance with these current standards, and defects related to wear and vandalism. Items not listed in the report have not been included in the inspection. The inspection will cover the playground equipment and the active area (that area which is obviously part of the playground), nominally up to three metres around, the fence line if closer, or other areas as agreed.

Operational inspections only take into consideration defects related to cleanliness, equipment ground clearances, ground surface finishes, exposed foundations, sharp edges, missing parts, excessive wear (of moving parts) structural integrity, wear and vandalism.

Routine visual inspections relate only to the most obvious defects such as broken or missing parts, litter, vandalism and issues created by severe weather conditions (the intention is to identify hazards created by storm damage).

All inspections are non-dismantling, non-destructive and do not include any structural, toxicology or impact assessments defined in the standard; however, the inspector will undertake a manual test for stability and if equipment fails under manual load, or any other hazard is identified as an unacceptable risk, the owner/operator will be notified as soon as practicably possible.

The inspector will access all reasonably accessible equipment and will assess all reasonably accessible parts above the standing surface. Where it is not possible to access parts of the equipment without employing an alternative means of access the report will record the action required by the owner/operator to ensure the continued safe use of the equipment.

Ancillary equipment will be assessed using the inspector's knowledge and experience of the standards named in this document. (Note: Ancillary items are not included in the specific equipment-type parts of the EN 1176 series; hence they are not assessed for compliance with EN 1176 series and are subject to a general safety assessment).

The owner/operator is responsible for the overall safety of the equipment and area.

The inspector will not undertake any of the following works unless specifically agreed in writing at the time of order:

Checking the depth and underlying structural integrity of any surface areas and/or carrying out any testing of the impact attenuating properties of any surfaces; the identification of any corrosion, rot or other deterioration in any apparatus or equipment other than by an external inspection; the inspection of any equipment (or part thereof) that is beneath the playing surface (loose-fill materials may be moved to expose foundations); tightening any bolts, hinges or other fixing devices on any apparatus or equipment; assessing or inspecting any electrical installations contained on any site and/or apparatus and/or equipment; assessing or inspecting any water supplies and/or water features and/or any associated computerised systems (including carrying out any programming); where planting or trees are mentioned in the report no assessments of toxicity, suitability or condition are undertaken – the owner/operator should have suitable inspections provided by a competent person.

The owner/operator should have a 'design risk assessment' provided by the manufacturer/designer of the area for the equipment and location in which the facility is installed.

The operator is responsible for managing risks of their provision and is required by law to carry out a 'suitable and sufficient assessment' of the risks associated with a site or activity. This inspection shall be considered as contributing to the operator's discharge of this responsibility.

The details contained within the report are a snapshot of the condition at the time of inspection only and subsequent events may affect the condition of the facility. Suggested remedial actions are based on the knowledge and experience of the inspector and/or that of the inspection company. The owner/operator should always seek the advice of the manufacturer or a competent person when undertaking repairs and/or modifications to equipment.

A full copy of the Play Inspection Company Ltd. Terms & Conditions is available on our website ([www.playinspections.co.uk](http://www.playinspections.co.uk))

The operator is responsible for following the guidance of the relevant standards. The standards give guidance on the installation, inspection, maintenance and operation of the various types of facilities. The inspection guidance is listed in Table 1, with an indication of which parts will be included in an RPII Annual or Post-Installation Inspection. The relevant standards also contain additional parts which the operator should follow.

Inspection recommendations of relevant standards Refer to relevant standards for full text	Annual Main	RPII Annual/ Post Installation Inspection
6.1 d) Overall levels of safety of equipment (see note 1)	✓	✓ [1]
6.1 d) Overall levels of safety of foundations (see note 1)	✓	✓ [1]
6.1 d) Overall levels of safety of playing surfaces (see note 2)	✓	✓ [2]
6.1 d) Compliance with the relevant parts of the standard and or risk assessment (see note 3)	✓	✓ [3]
6.1 d) Effects of weather	✓	✓
6.1 d) Presence of rot, decay or corrosion (see note 1)	✓	✓ [1]
6.1 d) Assessment of repairs made or added or replaced components (see note 4)	✓	✓ [4]
6.1 d) Excavation or dismantling/additional measures	✓	✗
6.2.1 Assessment of glass reinforced plastics (see note 5)	✓	✓ [5]
6.2.1 Inspection of one post equipment (see note 1)	✓	✓ [1]
6.2.4 Undertaking the Operators inspection protocol	✓	✗

NB: The clause numbers in table 1 are taken from BS EN 1176 - Part 7:2020. The content is equally applicable to all other relevant standards listed herein. Playgrounds contain a range of equipment from different manufacturers and installed over a number of years; operators should implement any guidance provided by the manufacturer. Item specific detail is not readily available to RPII Playground Inspectors, whose report contributes to the operator's overall Annual Main Inspection as detailed in the relevant standards.

[1] A manual test only is undertaken for stability. Wear and instability are only detectable where readily apparent without dismantling or destruction and without the use of tools, excavation or specialist equipment. Rot and corrosion are tested or with a hammer and/or steel rod. Decay in timber may exist which can only be found with specialist equipment.


[2] Only the visible condition and dimensional compliance of surface extent is considered. Neither testing of impact attenuating properties nor measurement of the thickness of bound surfaces are undertaken on RPII annual inspections.

[3] The inspection assesses compliance where this can be tested on site using manual methods without dismantling, destruction and without the use of tools or specialist equipment.

[4] The operator should use manufacturer's recommended parts, or equivalent. We are unable to verify if such parts have been used, and any subsequent change in quality or performance.

[5] Visible glass fibres will be noted in reports. The operator is responsible for repairs or replacement.

# Risk Assessment Matrix

			Scores in the report are multiplication factors of Likelihood x Severity					
			Severity>>					
Likelihood	Very High probability, if the situation is not addressed an accident is almost certain.	5	Very High	VL (5)	L (10)	M (15)	H (20)	VH (25)
	High probability an accident is probable without any added factor.	4	High	VL (4)	L (8)	M (12)	H (16)	H (20)
	Moderate probability an incident is foreseeable.	3	Moderate	VL (3)	L (6)	L (9)	M (12)	M (15)
	Some probability, requires a combination of factors to take place.	2	Low	VL (2)	VL (4)	L (6)	L (8)	L (10)
	No significant probability; lightning strike, freak accident.	1	Very Low	VL (1)	VL (2)	VL (3)	VL (4)	VL (5)
				Very Low	Low	Moderate	High	Very High
				1	2	3	4	5
				No injury likely e.g. damaged or soiled clothing, minor bruising, grazes	Minor injury, laceration or bruising requiring first aid only	Injury requiring medical intervention e.g. cuts requiring stitches	Serious injury including concussions or fracture of long bones	Severe injury involving a potential life changing injury or fatality
				Severity>>				
<p>Note 1: The total risk scores included within our reports are a multiplication factor of the calculated Likelihood and Severity of each finding. Both Likelihood and Severity are given a number between 1 - 5 as shown on the matrix above and these two numbers are then multiplied together to give the total risk score that is shown against defects on the report. Total risk scores can be divided in both directions, i.e. a total risk score of 12 could be a Likelihood (3) x Severity (4) or Likelihood (4) x Severity (3).</p> <p>Note 2: When we inspect we only see a snapshot of the current condition of the equipment. It is the operators responsibility to ensure that there is a continuing level of maintenance to keep the equipment in good working order and the site fit for use.</p>								

## Equipment has been assessed to the following standards where relevant:

- BS EN 1176 Parts 1-11 (Playground equipment and surfacing)
- BS EN 14974 (Facilities for users of roller sports equipment)
- BS EN 15312 (Free access multi-sports equipment)
- BS EN 16899 (Parkour Equipment)
- BS EN 16630 (Outdoor Fitness Equipment).

## Corringham Town Park

Inspection Ref: 1831488

Site Ref: 52819

Inspected: 1-November-2022 - 14:07 by James Law

Risk Assessment: 12 Moderate Risk



**Location:**

The site is located in an area of public open space and is overlooked by a number of properties in the local community.

**Disabled Access:**

Generally accessible; an area accessible to most.

**i 9 - Low Risk**

**Item:** Site General  
**Manufacturer:** Owner/Operator  
**Surface Type:** N/A  
**Item Quantity:** 1  
**Equipment Compliance:** N/A  
**Surface Area Compliance:** N/A

**Total Findings:** 10



**Finding 1**

Signage should be provided for the outdoor fitness equipment in accordance with the requirements of BS EN 16630, key requirements of the sign include, but are not limited to, intended users, medical safety and emergency contact details - Provide appropriate signage

**Finding 3**

There is weed / vegetation growth on, between, or around the edges of the surfacing - Remove weed / vegetation growth

**Finding 5**

The wetpour is crumbling in areas - Monitor for any further deterioration and repair as required

**Finding 7**

The surfacing in the fitness area is damaged - Repair the damaged areas of surfacing

**Finding 9**

There are areas or parts of the timber edgings that have rotted or are missing - Replace all affected timbers

**Finding 2**

There are significant gaps (over 30mm) between the surface and the edging or between the joints in the surface; these are large enough for a small foot to enter - Repair surfacing

**Finding 4**

There is a large amount of gravel on the surface - Remove from area

**Finding 6**

The surface is damaged and is lifting at the edges and creating trip points - Repair perimeter of surfacing to remove trip points

**Finding 8**

There are sleepers missing from the timber retaining wall - Replace the missing sleepers

**Finding 10**

There are trip hazards at the edges of the surface - Reinstall surrounding surface levels to remove the trip points

### 5 - Very Low Risk

**Item:** Sign  
**Manufacturer:** Owner/Operator  
**Surface Type:** N/A  
**Item Quantity:** 1  
**Equipment Compliance:** N/A  
**Surface Area Compliance:** N/A

**Total Findings:** 2



#### Finding 1

It is recommended that signage, with information including the site address, contact information for maintenance issues and emergency contact details are provided for the facility - Provide in accordance with the recommendations

#### Finding 2

There are no instruction labels provided on the fitness equipment; an instruction label should be provided with each item of equipment in accordance with the requirements of BS EN 16630 - Provide appropriate instruction label/s

### 8 - Low Risk

**Item:** Gate - Self Closing  
**Manufacturer:** Not Identified  
**Surface Type:** Grass  
**Item Quantity:** 1  
**Equipment Compliance:** N/A  
**Surface Area Compliance:** N/A

**Total Findings:** 4



#### Finding 1

The gate is not operating correctly - Take effective action to ensure the gate closes between 4 and 8 seconds

#### Finding 2

The gate is snagging on the surrounding surface preventing it from closing correctly - Carry out remedial works to ensure the gate closes correctly

#### Finding 3

No slamming plate has been fitted to the gates and the gate leaves pass the slamming posts - Provide slamming plates

#### Finding 4

The weld(s) on this item have failed - Repair item

**12 - Moderate Risk**

**Item:** Gate - Maintenance  
**Manufacturer:** Not Identified  
**Surface Type:** Grass  
**Item Quantity:** 1  
**Equipment Compliance:** N/A  
**Surface Area Compliance:** N/A

**Total Findings:** 5



**Finding 1**

The area around the item has eroded and may become slippery - Reinstall eroded area

**Finding 2**

The item is loose in its foundations - Reinstall item to secure

**Finding 3**

The surface has eroded and the foundations are exposed - Reinstall surrounding surfaces to cover the foundations

**Finding 4**

The gate has no drop bolt sleeves and/or drop bolts fitted - Provide drop bolt sleeves and/or drop bolts

**Finding 5**

There is no padlock on the maintenance gate - Provide a padlock to secure the gate

**6 - Low Risk**

**Item:** Fence - Bow Top  
**Manufacturer:** Not Identified  
**Surface Type:** Grass  
**Item Quantity:** 1  
**Equipment Compliance:** N/A  
**Surface Area Compliance:** N/A

**Total Findings:** 1



**Finding 1**

There is some damage to the fence sections - Monitor for any further deterioration and repair as required

**i 4 - Very Low Risk**

**Item:** Swing Barrier  
**Manufacturer:** Not Identified  
**Surface Type:** Grass  
**Item Quantity:** 2  
**Equipment Compliance:** N/A  
**Surface Area Compliance:** N/A

**Total Findings:** 1



**Finding 1**

This item is satisfactory - no work required -

**i 8 - Low Risk**

**Item:** Bench  
**Manufacturer:** Not Identified  
**Surface Type:** Grass  
**Item Quantity:** 2  
**Equipment Compliance:** N/A  
**Surface Area Compliance:** N/A

**Total Findings:** 1



**Finding 1**

The area around the item has eroded and may become slippery - Reinstate eroded area

**i 8 - Low Risk**

**Item:** Picnic Table  
**Manufacturer:** Not Identified  
**Surface Type:** Concrete  
**Item Quantity:** 3  
**Equipment Compliance:** N/A  
**Surface Area Compliance:** N/A

**Total Findings:** 3



**Finding 1**

There is moderate damage to the surface - Repair the damaged areas of surfacing

**Finding 2**

There is some graffiti present - Remove the graffiti

**Finding 3**

There are trip hazards at the edges of the surface - Reinstate surrounding surface levels to remove the trip points

**i 8 - Low Risk**

**Item:** Litter Bin  
**Manufacturer:** Not Identified  
**Surface Type:** Grass  
**Item Quantity:** 2  
**Equipment Compliance:** N/A  
**Surface Area Compliance:** N/A

**Total Findings:** 1



**Finding 1**

The bin is not securely fixed to the surface and there is some possibility of the item tipping or rolling over - Secure the bin to the ground



**i 10 - Low Risk**

**Item:** BMX Track  
**Manufacturer:** Owner/Operator  
**Surface Type:** Tarmac  
**Item Quantity:** 1  
**Equipment Compliance:** N/A  
**Surface Area Compliance:** N/A



**Total Findings:** 5

**Finding 1**

BMX tracks are not currently covered by any British or European Standard; comments made in the report are based on the application of our knowledge and understanding of the Wheeled Sports Standard (BS EN 14974) and their maintenance and the area has been risk assessed accordingly - Monitor use and review risk assessment regularly

**Finding 3**

There are minor stress fractures in the tarmac surface - Monitor and repair if required

**Finding 5**

There is algae, silt or moss growth on the surface resulting in slippery conditions - Clean and treat appropriately

**Finding 2**

The edges of the tarmac jump ramps has subsided - Repair the damaged ramps

**Finding 4**

There is some evidence of rot in the timber - Monitor for any further deterioration and replace as required

**i 6 - Low Risk**

**Item:** Multi Play (Toddler)  
**Manufacturer:** Hags  
**Surface Type:** Sand  
**Item Quantity:** 1  
**Equipment Compliance:** Yes  
**Surface Area Compliance:** Yes  
**Life Expectancy:** 5 -10 Years  
**Total Findings:** 7



**Finding 1**

The plywood has delaminated in some places - Remove all rough or splintered edges.

**Finding 3**

There is some graffiti present - Remove the graffiti

**Finding 5**

There are post / end caps missing from the item - Replace missing post caps

**Finding 7**

There is some evidence of rot in the timber - Monitor for any further deterioration and replace as required

**Finding 2**

The paintwork on this item has been damaged or worn exposing the metal underneath which is rusting - Treat any rusting components and repaint

**Finding 4**

The timber stain is in poor condition - Prepare all affected parts and re-stain with an appropriate preservative

**Finding 6**

There are a number of dents in the slide surface - Monitor for any further deterioration and repair as required

**i 6 - Low Risk**

**Item:** 1 Bay 2 Seat (Cradle)  
**Manufacturer:** Wicksteed Playgrounds  
**Surface Type:** Matta  
**Item Quantity:** 1  
**Equipment Compliance:** Yes  
**Surface Area Compliance:** Yes  
**Life Expectancy:** 5 -10 Years  
**Total Findings:** 4



**Finding 1**

There are gaps opening in between the tiles - Monitor for any further deterioration and repair as required

**Finding 2**

The connecting lugs are showing signs of wear - Monitor for any further deterioration and repair as required

**Finding 3**

The seat has minor damage or wear - Monitor for any further deterioration and replace as required

**Finding 4**

The surface has subsided in some areas - Monitor for any further deterioration and repair as required

**i 6 - Low Risk**

**Item:** Multi Play (Junior)  
**Manufacturer:** Hags  
**Surface Type:** Woodchip  
**Item Quantity:** 1  
**Equipment Compliance:** Yes  
**Surface Area Compliance:** Yes  
**Life Expectancy:** 5 -10 Years  
**Total Findings:** 4



**Finding 1**

There is some graffiti present - Remove the graffiti

**Finding 2**

There are a number of dents in the slide surface - Monitor for any further deterioration and repair as required

**Finding 3**

There is some evidence of fire damage to the item - Monitor for any further deterioration and repair as required

**Finding 4**

There are post / end caps missing from the item - Replace missing post caps

#### 4 - Very Low Risk

**Item:** Cone Climber  
**Manufacturer:** Not Identified  
**Surface Type:** Woodchip  
**Item Quantity:** 1  
**Equipment Compliance:** Yes  
**Surface Area Compliance:** Yes  
**Life Expectancy:** 5 -10 Years  
**Total Findings:** 1



##### **Finding 1**

This item is satisfactory - no work required -

#### 8 - Low Risk

**Item:** Misc Item  
**Manufacturer:** Playworld Systems (Europe) Ltd  
**Surface Type:** Woodchip  
**Item Quantity:** 1  
**Equipment Compliance:** Yes  
**Surface Area Compliance:** Yes  
**Life Expectancy:** 1 - 3 Years  
**Total Findings:** 2



##### **Finding 1**

The item has missing component(s) - Consider replacing missing components

##### **Finding 2**

The bearing is not operating correctly - Repair or replace the bearing as required

#### 4 - Very Low Risk

**Item:** Spinning Pole  
**Manufacturer:** Playworld Systems (Europe) Ltd  
**Surface Type:** Woodchip  
**Item Quantity:** 1  
**Equipment Compliance:** Yes  
**Surface Area Compliance:** Yes  
**Life Expectancy:** 3 - 5 Years  
**Total Findings:** 1



##### **Finding 1**

This item is satisfactory - no work required -

#### 6 - Low Risk

**Item:** Stepping Stones  
**Manufacturer:** Playworld Systems (Europe) Ltd  
**Surface Type:** Woodchip  
**Item Quantity:** 1  
**Equipment Compliance:** Yes  
**Surface Area Compliance:** Yes  
**Life Expectancy:** 3 - 5 Years  
**Total Findings:** 1



##### **Finding 1**

The item has been damaged - Monitor for any further deterioration and replace as required

**i 9 - Low Risk**

**Item:** Climbing Wall  
**Manufacturer:** Not Identified  
**Surface Type:** Woodchip  
**Item Quantity:** 1  
**Equipment Compliance:** Yes  
**Surface Area Compliance:** Yes  
**Life Expectancy:** 5 -10 Years  
**Total Findings:** 1



**Finding 1**

The rope has worn and wire strands are exposed - Replace rope or net

**i 8 - Low Risk**

**Item:** Space Net  
**Manufacturer:** Kompan Ltd  
**Surface Type:** Woodchip  
**Item Quantity:** 1  
**Equipment Compliance:** No  
**Surface Area Compliance:** Yes  
**Life Expectancy:** 5 -10 Years  
**Total Findings:** 1



**Finding 1**

There is a potential crushing point between the rope and the central post in contravention of BS EN 1176 Part 1 - Retention ropes to ensure the rope is spaced evenly around the post

#### 4 - Very Low Risk

**Item:** 2 Bay Swing  
**Manufacturer:** Playworld Systems (Europe) Ltd  
**Surface Type:** Woodchip  
**Item Quantity:** 1  
**Equipment Compliance:** Yes  
**Surface Area Compliance:** Yes  
**Life Expectancy:** 5 -10 Years  
**Total Findings:** 1



##### **Finding 1**

This item is satisfactory - no work required -

#### 6 - Low Risk

**Item:** 1 Bay 2 Seat (Flat)  
**Manufacturer:** Wicksteed Playgrounds  
**Surface Type:** Wet Pour  
**Item Quantity:** 1  
**Equipment Compliance:** No  
**Surface Area Compliance:** Yes  
**Life Expectancy:** 5 -10 Years  
**Total Findings:** 3



##### **Finding 1**

The connecting links are in excess of 8.6mm and less than 12mm and fail the requirements of BS EN 1176 Part 1; clause 4.2.13, Chains - Monitor use and replace with compliant links at the next maintenance cycle

##### **Finding 3**

The chain openings are in excess of the 8.6mm as recommended by BS EN 1176 - Monitor - No remedial work recommended

##### **Finding 2**

There is some notable evidence of chain wear - Monitor for any further deterioration and replace when 40% worn

**i 8 - Low Risk**

**Item:** Leg Press  
**Manufacturer:** The Great Outdoor Gym Company  
**Surface Type:** Wet Pour  
**Item Quantity:** 1  
**Equipment Compliance:** No  
**Surface Area Compliance:** Yes  
**Life Expectancy:** 3 - 5 Years  
**Total Findings:** 5



**Finding 1**

The connecting lugs are showing signs of wear - Monitor for any further deterioration and repair as required

**Finding 2**

There is some wear to the shackles - Monitor for any further deterioration and replace when 40% worn

**Finding 3**

There is some notable evidence of chain wear - Monitor for any further deterioration and replace when 40% worn

**Finding 4**

There is/are bolt cap covers missing or damaged on the item - Replace missing or damaged bolt cap covers

**Finding 5**

There is or are fixings missing on the item - Replace all missing fixings

**i 6 - Low Risk**

**Item:** Ab Station  
**Manufacturer:** The Great Outdoor Gym Company  
**Surface Type:** Wet Pour  
**Item Quantity:** 1  
**Equipment Compliance:** No  
**Surface Area Compliance:** Yes  
**Life Expectancy:** 5 - 10 Years  
**Total Findings:** 3



**Finding 1**

The paintwork on this item has been damaged or worn exposing the metal underneath which is rusting - Treat any rusting components and repaint

**Finding 2**

There is/are bolt cap covers missing or damaged on the item - Replace missing or damaged bolt cap covers

**Finding 3**

There is minor distortion damage to the bench - Monitor and repair if required

**i 8 - Low Risk**

**Item:** Cycle  
**Manufacturer:** The Great Outdoor Gym Company  
**Surface Type:** Wet Pour  
**Item Quantity:** 2  
**Equipment Compliance:** No  
**Surface Area Compliance:** Yes  
**Life Expectancy:** 1 - 3 Years  
**Total Findings:** 2



**Finding 1**

The mechanism has been removed from one item - Replace the missing components or remove the item completely

**Finding 2**

There is minor damage to the seat - Monitor and replace if required

**i 8 - Low Risk**

**Item:** Hip Twister  
**Manufacturer:** The Great Outdoor Gym Company  
**Surface Type:** Wet Pour  
**Item Quantity:** 1  
**Equipment Compliance:** No  
**Surface Area Compliance:** Yes  
**Life Expectancy:** <12 Months  
**Total Findings:** 3



**Finding 1**

The deflection of the rotating user station exceeds the maximum 105 degrees required by BS EN 16630 - Monitor - No remedial work recommended

**Finding 2**

The rotating user station is not appropriately marked with a guideline of user direction and/or the original position as required by BS EN 16630 - Monitor - No remedial work recommended

**Finding 3**

The frame has been removed - Consider replacing missing components

**i 8 - Low Risk**

**Item:** Hand Bike  
**Manufacturer:** The Great Outdoor Gym Company  
**Surface Type:** Wet Pour  
**Item Quantity:** 1  
**Equipment Compliance:** No  
**Surface Area Compliance:** Yes  
**Life Expectancy:** 3 - 5 Years  
**Total Findings:** 3



**Finding 1**

There is some evidence of fire damage to the item - Monitor for any further deterioration and repair as required

**Finding 2**

The paintwork on this item has been damaged or worn exposing the metal underneath which is rusting - Treat any rusting components and repaint

**Finding 3**

One or more handgrip(s) are damaged or missing. - Replace missing or damaged handgrips

**i 8 - Low Risk**

**Item:** Treadmill  
**Manufacturer:** The Great Outdoor Gym Company  
**Surface Type:** Wet Pour  
**Item Quantity:** 1  
**Equipment Compliance:** No  
**Surface Area Compliance:** Yes  
**Life Expectancy:** 5 -10 Years  
**Total Findings:** 2



**Finding 1**

The paintwork on this item has been damaged or worn exposing the metal underneath which is rusting - Treat any rusting components and repaint

**Finding 2**

The inspection plate has been removed - Replace the missing inspection plate

### 6 - Low Risk

**Item:** Dip Station  
**Manufacturer:** The Great Outdoor Gym Company  
**Surface Type:** Wet Pour  
**Item Quantity:** 1  
**Equipment Compliance:** No  
**Surface Area Compliance:** Yes  
**Life Expectancy:** 5 -10 Years  
**Total Findings:** 1



#### Finding 1

The paintwork on this item has been damaged or worn exposing the metal underneath which is rusting - Treat any rusting components and repaint

### 4 - Very Low Risk

**Item:** Pull Up Station  
**Manufacturer:** The Great Outdoor Gym Company  
**Surface Type:** Wet Pour  
**Item Quantity:** 1  
**Equipment Compliance:** No  
**Surface Area Compliance:** Yes  
**Life Expectancy:** 5 -10 Years  
**Total Findings:** 1



#### Finding 1

There is/are bolt cap covers missing or damaged on the item - Replace missing or damaged bolt cap covers

**i 8 - Low Risk**

**Item:** Cross Trainer  
**Manufacturer:** The Great Outdoor Gym Company  
**Surface Type:** Wet Pour  
**Item Quantity:** 2  
**Equipment Compliance:** No  
**Surface Area Compliance:** Yes  
**Life Expectancy:** 3 - 5 Years  
**Total Findings:** 2



**Finding 1**

The bushes are worn or missing - Replace worn or missing bushes

**Finding 2**

There is or are fixings missing on the item - Replace all missing fixings

**! 12 - Moderate Risk**

**Item:** Traverse Wall  
**Manufacturer:** Park Leisure Ltd  
**Surface Type:** Wet Pour  
**Item Quantity:** 1  
**Equipment Compliance:** Yes  
**Surface Area Compliance:** Yes  
**Life Expectancy:** 5 - 10 Years  
**Total Findings:** 3



**Finding 1**

The surfacing is severely damaged - Repair damaged areas of surfacing

**Finding 2**

The item has been damaged - Monitor for any further deterioration and replace as required

**Finding 3**

There is or are fixings missing on the item - Replace all missing fixings

**i 8 - Low Risk**

**Item:** Goalmouth and Basketball Post  
**Manufacturer:** Park Leisure Ltd  
**Surface Type:** Wet Pour  
**Item Quantity:** 1  
**Equipment Compliance:** No  
**Surface Area Compliance:** N/A  
**Life Expectancy:** 5 -10 Years  
**Total Findings:** 3



**Finding 1**

There is moderate damage to the surface - Repair the damaged areas of surfacing

**Finding 2**

There is/are finger entrapments in the framework and the item fails to meet the requirements of BS EN 15312 Clause 4.4.2.2 Entrapment of fingers - Monitor - No remedial work recommended

**Finding 3**

A clearly visible facility sign should be provided in a prominent position with the wording as detailed BS EN 15312- the equipment is not intended for children less than 3 years old- the warning - Do not climb on the framework or nets- the warning - Do not hang on the ring (if provided)- the warning - Do not wear rings or other jewellery- name and telephone number of the administrator- number to call in case of accident - Provide signage to BS EN 15312

**i 8 - Low Risk**

**Item:** Kickabout Wall  
**Manufacturer:** Park Leisure Ltd  
**Surface Type:** Wet Pour  
**Item Quantity:** 1  
**Equipment Compliance:** Yes  
**Surface Area Compliance:** Yes  
**Life Expectancy:** 5 -10 Years  
**Total Findings:** 3



**Finding 1**

The paintwork on this item has been damaged or worn exposing the metal underneath which is rusting - Treat any rusting components and repaint

**Finding 2**

There is or are fixings missing on the item - Replace all missing fixings

**Finding 3**

A clearly visible facility sign should be provided in a prominent position with the wording as detailed BS EN 15312- the equipment is not intended for children less than 3 years old- the warning - Do not climb on the framework or nets- the warning - Do not hang on the ring (if provided)- the warning - Do not wear rings or other jewellery- name and telephone number of the administrator- number to call in case of accident - Provide signage to BS EN 15312

## Findings information

### 4 - Very Low Risk (Finding 1)

**Item:** Ancillary Items - Site General  
**Manufacturer:** Owner/Operator

**Risk Level:** V - Very Low Risk  
**Surface:** N/A



**Finding:** Signage should be provided for the outdoor fitness equipment in accordance with the requirements of BS EN 16630, key requirements of the sign include, but are not limited to, intended users, medical safety and emergency contact details

**Action:** Provide appropriate signage

**i** 9 - Low Risk (Finding 2)

**Item:** Ancillary Items - Site General  
**Manufacturer:** Owner/Operator

**Risk Level:** L - Low Risk  
**Surface:** N/A



**Finding:** There are significant gaps (over 30mm) between the surface and the edging or between the joints in the surface; these are large enough for a small foot to enter

**Action:** Repair surfacing

**i** 6 - Low Risk (Finding 3)

**Item:** Ancillary Items - Site General  
**Manufacturer:** Owner/Operator

**Risk Level:** L - Low Risk  
**Surface:** N/A



**Finding:** There is weed / vegetation growth on, between, or around the edges of the surfacing

**Action:** Remove weed / vegetation growth

**i 6 - Low Risk (Finding 4)**

**Item:** Ancillary Items - Site General  
**Manufacturer:** Owner/Operator

**Risk Level:** L - Low Risk  
**Surface:** N/A



**Finding:** There is a large amount of gravel on the surface

**Action:** Remove from area

**i 6 - Low Risk (Finding 5)**

**Item:** Ancillary Items - Site General  
**Manufacturer:** Owner/Operator

**Risk Level:** L - Low Risk  
**Surface:** N/A



**Finding:** The wetpour is crumbling in areas

**Action:** Monitor for any further deterioration and repair as required

**i** 8 - Low Risk (Finding 6)

**Item:** Ancillary Items - Site General  
**Manufacturer:** Owner/Operator

**Risk Level:** L - Low Risk  
**Surface:** N/A



**Finding:** The surface is damaged and is lifting at the edges and creating trip points  
**Action:** Repair perimeter of surfacing to remove trip points

**i** 8 - Low Risk (Finding 7)

**Item:** Ancillary Items - Site General  
**Manufacturer:** Owner/Operator

**Risk Level:** L - Low Risk  
**Surface:** N/A



**Finding:** The surfacing in the fitness area is damaged  
**Action:** Repair the damaged areas of surfacing

**i** 8 - Low Risk (Finding 8)

**Item:** Ancillary Items - Site General  
**Manufacturer:** Owner/Operator

**Risk Level:** L - Low Risk  
**Surface:** N/A



**Finding:** There are sleepers missing from the timber retaining wall

**Action:** Replace the missing sleepers

**i** 8 - Low Risk (Finding 9)

**Item:** Ancillary Items - Site General  
**Manufacturer:** Owner/Operator

**Risk Level:** L - Low Risk  
**Surface:** N/A



**Finding:** There are areas or parts of the timber edgings that have rotted or are missing

**Action:** Replace all affected timbers

**i** 8 - Low Risk (Finding 10)

**Item:** Ancillary Items - Site General  
**Manufacturer:** Owner/Operator

**Risk Level:** L - Low Risk  
**Surface:** N/A

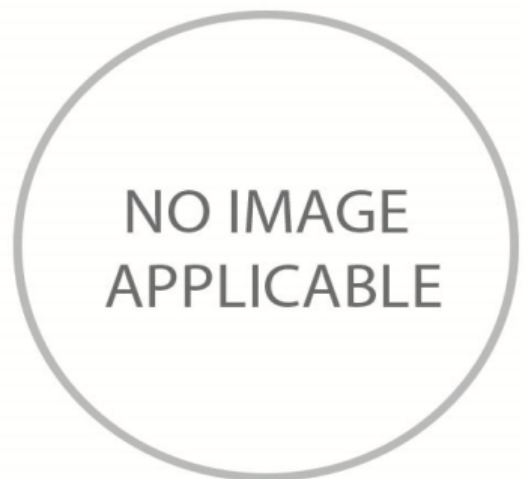


**Finding:** There are trip hazards at the edges of the surface **Action:** Reinstate surrounding surface levels to remove the trip points

**i** 5 - Very Low Risk (Finding 1)

**Item:** Ancillary Items - Sign  
**Manufacturer:** Owner/Operator

**Risk Level:** V - Very Low Risk  
**Surface:** N/A



**Finding:** It is recommended that signage, with information including the site address, contact information for maintenance issues and emergency contact details are provided for the facility **Action:** Provide in accordance with the recommendations

**i 4 - Very Low Risk (Finding 2)**

**Item:** Ancillary Items - Sign  
**Manufacturer:** Owner/Operator

**Risk Level:** V - Very Low Risk  
**Surface:** N/A



**Finding:** There are no instruction labels provided on the fitness equipment; an instruction label should be provided with each item of equipment in accordance with the requirements of BS EN 16630

**Action:** Provide appropriate instruction label/s

**i 5 - Very Low Risk (Finding 1)**

**Item:** Gates - Gate - Self Closing  
**Manufacturer:** Not Identified

**Risk Level:** V - Very Low Risk  
**Surface:** Grass



**Finding:** The gate is not operating correctly

**Action:** Take effective action to ensure the gate closes between 4 and 8 seconds

**i** 5 - Very Low Risk (Finding 2)

**Item:** Gates - Gate - Self Closing  
**Manufacturer:** Not Identified

**Risk Level:** V - Very Low Risk  
**Surface:** Grass



**Finding:** The gate is snagging on the surrounding surface preventing it from closing correctly

**Action:** Carry out remedial works to ensure the gate closes correctly

**i** 8 - Low Risk (Finding 3)

**Item:** Gates - Gate - Self Closing  
**Manufacturer:** Not Identified

**Risk Level:** L - Low Risk  
**Surface:** Grass



**Finding:** No slamming plate has been fitted to the gates and the gate leaves pass the slamming posts

**Action:** Provide slamming plates

**i** 8 - Low Risk (Finding 4)

**Item:** Gates - Gate - Self Closing  
**Manufacturer:** Not Identified

**Risk Level:** L - Low Risk  
**Surface:** Grass



**Finding:** The weld(s) on this item have failed

**Action:** Repair item

**i** 8 - Low Risk (Finding 1)

**Item:** Gates - Gate - Maintenance  
**Manufacturer:** Not Identified

**Risk Level:** L - Low Risk  
**Surface:** Grass



**Finding:** The area around the item has eroded and may become slippery

**Action:** Reinstate eroded area

**12 - Moderate Risk (Finding 2)**

**Item:** Gates - Gate - Maintenance  
**Manufacturer:** Not Identified

**Risk Level:** M - Moderate Risk  
**Surface:** Grass



**Finding:** The item is loose in its foundations

**Action:** Reinstall item to secure

**8 - Low Risk (Finding 3)**

**Item:** Gates - Gate - Maintenance  
**Manufacturer:** Not Identified

**Risk Level:** L - Low Risk  
**Surface:** Grass



**Finding:** The surface has eroded and the foundations are exposed

**Action:** Reinstall surrounding surfaces to cover the foundations

**i** 6 - Low Risk (Finding 4)

**Item:** Gates - Gate - Maintenance  
**Manufacturer:** Not Identified

**Risk Level:** L - Low Risk  
**Surface:** Grass



**Finding:** The gate has no drop bolt sleeves and/or drop bolts fitted

**Action:** Provide drop bolt sleeves and/or drop bolts

**i** 6 - Low Risk (Finding 5)

**Item:** Gates - Gate - Maintenance  
**Manufacturer:** Not Identified

**Risk Level:** L - Low Risk  
**Surface:** Grass



**Finding:** There is no padlock on the maintenance gate

**Action:** Provide a padlock to secure the gate

**i** 6 - Low Risk (Finding 1)

**Item:** Fences - Fence - Bow Top  
**Manufacturer:** Not Identified

**Risk Level:** L - Low Risk  
**Surface:** Grass



**Finding:** There is some damage to the fence sections

**Action:** Monitor for any further deterioration and repair as required

**i** 8 - Low Risk (Finding 1)

**Item:** Ancillary Items - Bench  
**Manufacturer:** Not Identified

**Risk Level:** L - Low Risk  
**Surface:** Grass



**Finding:** The area around the item has eroded and may become slippery

**Action:** Reinstate eroded area

**i 8 - Low Risk (Finding 1)**

**Item:** Ancillary Items - Picnic Table  
**Manufacturer:** Not Identified

**Risk Level:** L - Low Risk  
**Surface:** Concrete



**Finding:** There is moderate damage to the surface

**Action:** Repair the damaged areas of surfacing

**i 0 - Risk Assessment not Undertaken (Finding 2)**

**Item:** Ancillary Items - Picnic Table  
**Manufacturer:** Not Identified

**Risk Level:** N - Risk Assessment not Undertaken  
**Surface:** Concrete



**Finding:** There is some graffiti present

**Action:** Remove the graffiti

**i** 8 - Low Risk (Finding 3)

**Item:** Ancillary Items - Picnic Table  
**Manufacturer:** Not Identified

**Risk Level:** L - Low Risk  
**Surface:** Concrete



**Finding:** There are trip hazards at the edges of the surface

**Action:** Reinststate surrounding surface levels to remove the trip points

**i** 8 - Low Risk (Finding 1)

**Item:** Ancillary Items - Litter Bin  
**Manufacturer:** Not Identified

**Risk Level:** L - Low Risk  
**Surface:** Grass



**Finding:** The bin is not securely fixed to the surface and there is some possibility of the item tipping or rolling over

**Action:** Secure the bin to the ground

**i** 10 - Low Risk (Finding 1)

**Item:** Wheeled Sports - BMX Track  
**Manufacturer:** Owner/Operator

**Risk Level:** L - Low Risk  
**Surface:** Tarmac



**Finding:** BMX tracks are not currently covered by any British or European Standard; comments made in the report are based on the application of our knowledge and understanding of the Wheeled Sports Standard (BS EN 14974) and their maintenance and the area has been risk assessed accordingly

**Action:** Monitor use and review risk assessment regularly

**i** 6 - Low Risk (Finding 2)

**Item:** Wheeled Sports - BMX Track  
**Manufacturer:** Owner/Operator

**Risk Level:** L - Low Risk  
**Surface:** Tarmac



**Finding:** The edges of the tarmac jump ramps has subsided **Action:** Repair the damaged ramps

**i** 6 - Low Risk (Finding 3)

**Item:** Wheeled Sports - BMX Track  
**Manufacturer:** Owner/Operator

**Risk Level:** L - Low Risk  
**Surface:** Tarmac



**Finding:** There are minor stress fractures in the tarmac surface

**Action:** Monitor and repair if required

**i** 6 - Low Risk (Finding 4)

**Item:** Wheeled Sports - BMX Track  
**Manufacturer:** Owner/Operator

**Risk Level:** L - Low Risk  
**Surface:** Tarmac



**Finding:** There is some evidence of rot in the timber

**Action:** Monitor for any further deterioration and replace as required

**i** 8 - Low Risk (Finding 5)

**Item:** Wheeled Sports - BMX Track  
**Manufacturer:** Owner/Operator

**Risk Level:** L - Low Risk  
**Surface:** Tarmac



**Finding:** There is algae, silt or moss growth on the surface resulting in slippery conditions

**Action:** Clean and treat appropriately

**i** 6 - Low Risk (Finding 1)

**Item:** Activity Equipment - Multi Play (Toddler)  
**Manufacturer:** Hags

**Risk Level:** L - Low Risk  
**Surface:** Sand



**Finding:** The plywood has delaminated in some places

**Action:** Remove all rough or splintered edges.

**i** 6 - Low Risk (Finding 2)

**Item:** Activity Equipment - Multi Play (Toddler)  
**Manufacturer:** Hags

**Risk Level:** L - Low Risk  
**Surface:** Sand



**Finding:** The paintwork on this item has been damaged or worn exposing the metal underneath which is rusting

**Action:** Treat any rusting components and repaint

**i** 0 - Risk Assessment not Undertaken (Finding 3)

**Item:** Activity Equipment - Multi Play (Toddler)  
**Manufacturer:** Hags

**Risk Level:** N - Risk Assessment not Undertaken  
**Surface:** Sand



**Finding:** There is some graffiti present

**Action:** Remove the graffiti

**i** 6 - Low Risk (Finding 4)

**Item:** Activity Equipment - Multi Play (Toddler)  
**Manufacturer:** Hags

**Risk Level:** L - Low Risk  
**Surface:** Sand



**Finding:** The timber stain is in poor condition

**Action:** Prepare all affected parts and re-stain with an appropriate preservative

**i** 6 - Low Risk (Finding 5)

**Item:** Activity Equipment - Multi Play (Toddler)  
**Manufacturer:** Hags

**Risk Level:** L - Low Risk  
**Surface:** Sand



**Finding:** There are post / end caps missing from the item

**Action:** Replace missing post caps

**i** 4 - Very Low Risk (Finding 6)

**Item:** Activity Equipment - Multi Play (Toddler)  
**Manufacturer:** Hags

**Risk Level:** V - Very Low Risk  
**Surface:** Sand



**Finding:** There are a number of dents in the slide surface

**Action:** Monitor for any further deterioration and repair as required

**i** 6 - Low Risk (Finding 7)

**Item:** Activity Equipment - Multi Play (Toddler)  
**Manufacturer:** Hags

**Risk Level:** L - Low Risk  
**Surface:** Sand



**Finding:** There is some evidence of rot in the timber

**Action:** Monitor for any further deterioration and replace as required

**i** 6 - Low Risk (Finding 1)

**Item:** Swings - 1 Bay 2 Seat (Cradle)  
**Manufacturer:** Wicksteed Playgrounds

**Risk Level:** L - Low Risk  
**Surface:** Matta



**Finding:** There are gaps opening in between the tiles

**Action:** Monitor for any further deterioration and repair as required

**i** 6 - Low Risk (Finding 2)

**Item:** Swings - 1 Bay 2 Seat (Cradle)  
**Manufacturer:** Wicksteed Playgrounds

**Risk Level:** L - Low Risk  
**Surface:** Matta



**Finding:** The connecting lugs are showing signs of wear

**Action:** Monitor for any further deterioration and repair as required

**i** 6 - Low Risk (Finding 3)

**Item:** Swings - 1 Bay 2 Seat (Cradle)  
**Manufacturer:** Wicksteed Playgrounds

**Risk Level:** L - Low Risk  
**Surface:** Matta



**Finding:** The seat has minor damage or wear

**Action:** Monitor for any further deterioration and replace as required

**i** 6 - Low Risk (Finding 4)

**Item:** Swings - 1 Bay 2 Seat (Cradle)  
**Manufacturer:** Wicksteed Playgrounds

**Risk Level:** L - Low Risk  
**Surface:** Matta



**Finding:** The surface has subsided in some areas

**Action:** Monitor for any further deterioration and repair as required

**i** 0 - Risk Assessment not Undertaken (Finding 1)

**Item:** Activity Equipment - Multi Play (Junior)  
**Manufacturer:** Hags

**Risk Level:** N - Risk Assessment not Undertaken  
**Surface:** Woodchip



**Finding:** There is some graffiti present

**Action:** Remove the graffiti

**i** 4 - Very Low Risk (Finding 2)

**Item:** Activity Equipment - Multi Play (Junior)  
**Manufacturer:** Hags

**Risk Level:** V - Very Low Risk  
**Surface:** Woodchip



**Finding:** There are a number of dents in the slide surface

**Action:** Monitor for any further deterioration and repair as required

**i** 6 - Low Risk (Finding 3)

**Item:** Activity Equipment - Multi Play (Junior)  
**Manufacturer:** Hags

**Risk Level:** L - Low Risk  
**Surface:** Woodchip



**Finding:** There is some evidence of fire damage to the item **Action:** Monitor for any further deterioration and repair as required

**i** 6 - Low Risk (Finding 4)

**Item:** Activity Equipment - Multi Play (Junior)  
**Manufacturer:** Hags

**Risk Level:** L - Low Risk  
**Surface:** Woodchip



**Finding:** There are post / end caps missing from the item **Action:** Replace missing post caps

**i 6 - Low Risk (Finding 1)**

**Item:** Rotor Play - Misc Item  
**Manufacturer:** Playworld Systems (Europe) Ltd

**Risk Level:** L - Low Risk  
**Surface:** Woodchip



**Finding:** The item has missing component(s)

**Action:** Consider replacing missing components

**i 8 - Low Risk (Finding 2)**

**Item:** Rotor Play - Misc Item  
**Manufacturer:** Playworld Systems (Europe) Ltd

**Risk Level:** L - Low Risk  
**Surface:** Woodchip



**Finding:** The bearing is not operating correctly

**Action:** Repair or replace the bearing as required

**i** 6 - Low Risk (Finding 1)

**Item:** Activity Equipment - Stepping Stones  
**Manufacturer:** Playworld Systems (Europe) Ltd

**Risk Level:** L - Low Risk  
**Surface:** Woodchip



**Finding:** The item has been damaged

**Action:** Monitor for any further deterioration and replace as required

**i** 9 - Low Risk (Finding 1)

**Item:** Activity Equipment - Climbing Wall  
**Manufacturer:** Not Identified

**Risk Level:** L - Low Risk  
**Surface:** Woodchip



**Finding:** The rope has worn and wire strands are exposed

**Action:** Replace rope or net

**i 8 - Low Risk (Finding 1)**

**Item:** Activity Equipment - Space Net  
**Manufacturer:** Kompan Ltd

**Risk Level:** L - Low Risk  
**Surface:** Woodchip



**Finding:** There is a potential crushing point between the rope and the central post in contravention of BS EN 1176 Part 1

**Action:** Re-tension ropes to ensure the rope is spaced evenly around the post

**i 5 - Very Low Risk (Finding 1)**

**Item:** Swings - 1 Bay 2 Seat (Flat)  
**Manufacturer:** Wicksteed Playgrounds

**Risk Level:** V - Very Low Risk  
**Surface:** Wet Pour



**Finding:** The connecting links are in excess of 8.6mm and less than 12mm and fail the requirements of BS EN 1176 Part 1; clause 4.2.13, Chains

**Action:** Monitor use and replace with compliant links at the next maintenance cycle

**i 6 - Low Risk (Finding 2)**

**Item:** Swings - 1 Bay 2 Seat (Flat)  
**Manufacturer:** Wicksteed Playgrounds

**Risk Level:** L - Low Risk  
**Surface:** Wet Pour



**Finding:** There is some notable evidence of chain wear

**Action:** Monitor for any further deterioration and replace when 40% worn

**i 5 - Very Low Risk (Finding 3)**

**Item:** Swings - 1 Bay 2 Seat (Flat)  
**Manufacturer:** Wicksteed Playgrounds

**Risk Level:** V - Very Low Risk  
**Surface:** Wet Pour



**Finding:** The chain openings are in excess of the 8.6mm as recommended by BS EN 1176

**Action:** Monitor - No remedial work recommended

**i** 6 - Low Risk (Finding 1)

**Item:** Outdoor Fitness Equipment - Leg Press  
**Manufacturer:** The Great Outdoor Gym Company

**Risk Level:** L - Low Risk  
**Surface:** Wet Pour



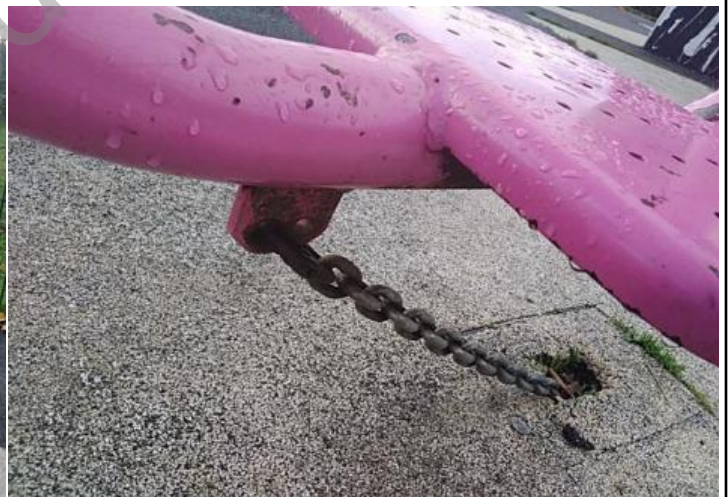
**Finding:** The connecting lugs are showing signs of wear

**Action:** Monitor for any further deterioration and repair as required

**i** 6 - Low Risk (Finding 2)

**Item:** Outdoor Fitness Equipment - Leg Press  
**Manufacturer:** The Great Outdoor Gym Company

**Risk Level:** L - Low Risk  
**Surface:** Wet Pour



**Finding:** There is some wear to the shackles

**Action:** Monitor for any further deterioration and replace when 40% worn

**i 6 - Low Risk (Finding 3)**

**Item:** Outdoor Fitness Equipment - Leg Press  
**Manufacturer:** The Great Outdoor Gym Company

**Risk Level:** L - Low Risk  
**Surface:** Wet Pour



**Finding:** There is some notable evidence of chain wear

**Action:** Monitor for any further deterioration and replace when 40% worn

**i 4 - Very Low Risk (Finding 4)**

**Item:** Outdoor Fitness Equipment - Leg Press  
**Manufacturer:** The Great Outdoor Gym Company

**Risk Level:** V - Very Low Risk  
**Surface:** Wet Pour



**Finding:** There is/are bolt cap covers missing or damaged on the item

**Action:** Replace missing or damaged bolt cap covers

**i 8 - Low Risk (Finding 5)**

**Item:** Outdoor Fitness Equipment - Leg Press  
**Manufacturer:** The Great Outdoor Gym Company

**Risk Level:** L - Low Risk  
**Surface:** Wet Pour



**Finding:** There is or are fixings missing on the item

**Action:** Replace all missing fixings

**i 6 - Low Risk (Finding 1)**

**Item:** Outdoor Fitness Equipment - Ab Station  
**Manufacturer:** The Great Outdoor Gym Company

**Risk Level:** L - Low Risk  
**Surface:** Wet Pour



**Finding:** The paintwork on this item has been damaged or worn exposing the metal underneath which is rusting

**Action:** Treat any rusting components and repaint

**i** 4 - Very Low Risk (Finding 2)

**Item:** Outdoor Fitness Equipment - Ab Station  
**Manufacturer:** The Great Outdoor Gym Company

**Risk Level:** V - Very Low Risk  
**Surface:** Wet Pour



**Finding:** There is/are bolt cap covers missing or damaged on the item

**Action:** Replace missing or damaged bolt cap covers

**i** 6 - Low Risk (Finding 3)

**Item:** Outdoor Fitness Equipment - Ab Station  
**Manufacturer:** The Great Outdoor Gym Company

**Risk Level:** L - Low Risk  
**Surface:** Wet Pour



**Finding:** There is minor distortion damage to the bench

**Action:** Monitor and repair if required

**i 8 - Low Risk (Finding 1)**

**Item:** Outdoor Fitness Equipment - Cycle  
**Manufacturer:** The Great Outdoor Gym Company

**Risk Level:** L - Low Risk  
**Surface:** Wet Pour



**Finding:** The mechanism has been removed from one item **Action:** Replace the missing components or remove the item completely

**i 6 - Low Risk (Finding 2)**

**Item:** Outdoor Fitness Equipment - Cycle  
**Manufacturer:** The Great Outdoor Gym Company

**Risk Level:** L - Low Risk  
**Surface:** Wet Pour



**Finding:** There is minor damage to the seat **Action:** Monitor and replace if required

**i 8 - Low Risk (Finding 1)**

**Item:** Outdoor Fitness Equipment - Hip Twister  
**Manufacturer:** The Great Outdoor Gym Company

**Risk Level:** L - Low Risk  
**Surface:** Wet Pour



**Finding:** The deflection of the rotating user station exceeds the maximum 105 degrees required by BS EN 16630

**Action:** Monitor - No remedial work recommended

**i 6 - Low Risk (Finding 2)**

**Item:** Outdoor Fitness Equipment - Hip Twister  
**Manufacturer:** The Great Outdoor Gym Company

**Risk Level:** L - Low Risk  
**Surface:** Wet Pour



**Finding:** The rotating user station is not appropriately marked with a guideline of user direction and/or the original position as required by BS EN 16630

**Action:** Monitor - No remedial work recommended

**i 8 - Low Risk (Finding 3)**

**Item:** Outdoor Fitness Equipment - Hip Twister  
**Manufacturer:** The Great Outdoor Gym Company

**Risk Level:** L - Low Risk  
**Surface:** Wet Pour



**Finding:** The frame has been removed

**Action:** Consider replacing missing components

**i 6 - Low Risk (Finding 1)**

**Item:** Outdoor Fitness Equipment - Hand Bike  
**Manufacturer:** The Great Outdoor Gym Company

**Risk Level:** L - Low Risk  
**Surface:** Wet Pour



**Finding:** There is some evidence of fire damage to the item

**Action:** Monitor for any further deterioration and repair as required

**i** 6 - Low Risk (Finding 2)

**Item:** Outdoor Fitness Equipment - Hand Bike  
**Manufacturer:** The Great Outdoor Gym Company

**Risk Level:** L - Low Risk  
**Surface:** Wet Pour



**Finding:** The paintwork on this item has been damaged or worn exposing the metal underneath which is rusting

**Action:** Treat any rusting components and repaint

**i** 8 - Low Risk (Finding 3)

**Item:** Outdoor Fitness Equipment - Hand Bike  
**Manufacturer:** The Great Outdoor Gym Company

**Risk Level:** L - Low Risk  
**Surface:** Wet Pour



**Finding:** One or more handgrip(s) are damaged or missing.

**Action:** Replace missing or damaged handgrips

**i** 6 - Low Risk (Finding 1)

**Item:** Outdoor Fitness Equipment - Treadmill  
**Manufacturer:** The Great Outdoor Gym Company

**Risk Level:** L - Low Risk  
**Surface:** Wet Pour



**Finding:** The paintwork on this item has been damaged or worn exposing the metal underneath which is rusting

**Action:** Treat any rusting components and repaint

**i** 8 - Low Risk (Finding 2)

**Item:** Outdoor Fitness Equipment - Treadmill  
**Manufacturer:** The Great Outdoor Gym Company

**Risk Level:** L - Low Risk  
**Surface:** Wet Pour



**Finding:** The inspection plate has been removed

**Action:** Replace the missing inspection plate

**i 6 - Low Risk (Finding 1)**

**Item:** Outdoor Fitness Equipment - Dip Station  
**Manufacturer:** The Great Outdoor Gym Company

**Risk Level:** L - Low Risk  
**Surface:** Wet Pour



**Finding:** The paintwork on this item has been damaged or worn exposing the metal underneath which is rusting

**Action:** Treat any rusting components and repaint

**i 4 - Very Low Risk (Finding 1)**

**Item:** Outdoor Fitness Equipment - Pull Up Station  
**Manufacturer:** The Great Outdoor Gym Company

**Risk Level:** V - Very Low Risk  
**Surface:** Wet Pour



**Finding:** There is/are bolt cap covers missing or damaged on the item

**Action:** Replace missing or damaged bolt cap covers

**i** 8 - Low Risk (Finding 1)

**Item:** Outdoor Fitness Equipment - Cross Trainer **Risk Level:** L - Low Risk  
**Manufacturer:** The Great Outdoor Gym Company **Surface:** Wet Pour



**Finding:** The bushes are worn or missing

**Action:** Replace worn or missing bushes

**i** 8 - Low Risk (Finding 2)

**Item:** Outdoor Fitness Equipment - Cross Trainer **Risk Level:** L - Low Risk  
**Manufacturer:** The Great Outdoor Gym Company **Surface:** Wet Pour



**Finding:** There is or are fixings missing on the item

**Action:** Replace all missing fixings

**12 - Moderate Risk (Finding 1)**

**Item:** Activity Equipment - Traverse Wall  
**Manufacturer:** Park Leisure Ltd

**Risk Level:** M - Moderate Risk  
**Surface:** Wet Pour



**Finding:** The surfacing is severely damaged

**Action:** Repair damaged areas of surfacing

**6 - Low Risk (Finding 2)**

**Item:** Activity Equipment - Traverse Wall  
**Manufacturer:** Park Leisure Ltd

**Risk Level:** L - Low Risk  
**Surface:** Wet Pour



**Finding:** The item has been damaged

**Action:** Monitor for any further deterioration and replace as required

**i** 8 - Low Risk (Finding 3)

**Item:** Activity Equipment - Traverse Wall  
**Manufacturer:** Park Leisure Ltd

**Risk Level:** L - Low Risk  
**Surface:** Wet Pour



**Finding:** There is or are fixings missing on the item

**Action:** Replace all missing fixings

**i** 8 - Low Risk (Finding 1)

**Item:** Multi Use Games Area - Goalmouth and Basketball Post  
**Manufacturer:** Park Leisure Ltd

**Risk Level:** L - Low Risk  
**Surface:** Wet Pour



**Finding:** There is moderate damage to the surface

**Action:** Repair the damaged areas of surfacing

**i** 5 - Very Low Risk (Finding 2)

**Item:** Multi Use Games Area - Goalmouth and Basketball Post  
**Manufacturer:** Park Leisure Ltd

**Risk Level:** V - Very Low Risk  
**Surface:** Wet Pour



**Finding:** There is/are finger entrapments in the framework and the item fails to meet the requirements of BS EN 15312 Clause 4.4.2.2 Entrapment of fingers

**Action:** Monitor - No remedial work recommended

**i 5 - Very Low Risk (Finding 3)**

**Item:** Multi Use Games Area - Goalmouth and Basketball Post  
**Manufacturer:** Park Leisure Ltd

**Risk Level:** V - Very Low Risk  
**Surface:** Wet Pour



**Finding:** A clearly visible facility sign should be provided in a prominent position with the wording as detailed BS EN 15312- the equipment is not intended for children less than 3 years old- the warning - Do not climb on the framework or nets- the warning - Do not hang on the ring (if provided)- the warning - Do not wear rings or other jewellery- name and telephone number of the administrator- number to call in case of accident

**Action:** Provide signage to BS EN 15312

**i 6 - Low Risk (Finding 1)**

**Item:** Multi Use Games Area - Kickabout Wall  
**Manufacturer:** Park Leisure Ltd

**Risk Level:** L - Low Risk  
**Surface:** Wet Pour



**Finding:** The paintwork on this item has been damaged or worn exposing the metal underneath which is rusting

**Action:** Treat any rusting components and repaint

**i 8 - Low Risk (Finding 2)**

**Item:** Multi Use Games Area - Kickabout Wall  
**Manufacturer:** Park Leisure Ltd

**Risk Level:** L - Low Risk  
**Surface:** Wet Pour



**Finding:** There is or are fixings missing on the item

**Action:** Replace all missing fixings

**i** 5 - Very Low Risk (Finding 3)

**Item:** Multi Use Games Area - Kickabout Wall  
**Manufacturer:** Park Leisure Ltd

**Risk Level:** V - Very Low Risk  
**Surface:** Wet Pour



**Finding:** A clearly visible facility sign should be provided in a prominent position with the wording as detailed BS EN 15312- the equipment is not intended for children less than 3 years old- the warning - Do not climb on the framework or nets- the warning - Do not hang on the ring (if provided)- the warning - Do not wear rings or other jewellery- name and telephone number of the administrator- number to call in case of accident

**Action:** Provide signage to BS EN 15312