



the play inspection company

Annual Inspection

Thurrock Council

Corringham Town Park

Springhouse Road, Corringham, Essex, SS17 7NB



API Associate



Unit 5, Glenmore Business Park, Blackhill Road, Poole, Dorset, BH16 6NL
t- 01202 590675 e- info@playinspections.co.uk

www.playinspections.co.uk

Inspection Scope for RPII Inspection Methodology

This document outlines the RPII scope for inspections undertaken by the Inspectors listed as Annual Inspectors on the RPII Register of Inspectors when undertaking Indoor Annual, Outdoor Annual, Outdoor Operational and Outdoor Routine inspections.

Inspections are undertaken with reference to the standards listed in this preamble only; where no date for the standard is given it will be the standard that is current at the time of inspection except where overlap periods are granted by the standards committee when standards are updated. The information contained in reports is provided to assist the owner/operator in fulfilling their responsibilities as detailed in the relevant standard. Other standards referenced within the listed standards do not form part of the inspection, unless they are also explicitly listed here.

The following standards are relevant to all installations of equipment that are publicly accessible to users; this includes public parks, pay and play parks, schools, nurseries, public houses, holiday parks, indoor play centres, farm parks etc. All equipment used or employed in publicly accessible areas should meet with the requirements of the relevant standards (listed below):

BS EN 1176 Parts 1, 2, 3, 4, 5, 6, 10 & 11 Playground equipment intended for permanent installation outdoors & indoors.

BS EN 1176 Part 7 - 'Guidance on Installation, Inspection, Maintenance and Operation' (this document gives guidance to the owners/operators of the facility on the installation, inspection, maintenance and operation of playground equipment, excluding ancillary items).

In the United Kingdom the National Foreword forms an important part to the understanding and implementation of the recommendations set out in this document. It clarifies the application of the document within the UK as best practice guidance, as the document has been used since its initial publication. Therefore, in the UK this standard (BS EN 1176 – Part 7) contains no requirements and needs to be read and implemented as guidance, with the use of the term 'shall' therefore becoming a recommendation, as in the term 'should'.

Domestic play equipment falls outside of the scope of BS EN 1176 and has its own standards (BS EN 71 series – Safety of Toys). Where domestic equipment can be identified this will be acknowledged in the report but any comments concerning compliance will follow the requirements and recommendations of BS EN 1176.

When water play items, including spray parks, are inspected any comments concerning compliance within the inspection will refer to BS EN 1176. We have not assessed these against the requirements of BS EN 17232 (Water play equipment and features).

Other equipment that is not clearly identified as unsupervised or domestic (natural play, self-build equipment etc.) will be assessed for compliance with the relevant standard listed below:

BS EN 15312 Free access multi-sports equipment
BS EN 14974 Skateparks
BS EN 16630 Permanently installed outdoor fitness equipment
BS EN 16899 Parkour equipment (plus RPII/API guidance notes)

Annual and Post Installation inspections will take into consideration compliance with these current standards, and defects related to wear and vandalism. Items not listed in the report have not been included in the inspection. The inspection will cover the playground equipment and the active area (that area which is obviously part of the playground), nominally up to three metres around, the fence line if closer, or other areas as agreed.

Operational inspections only take into consideration defects related to cleanliness, equipment ground clearances, ground surface finishes, exposed foundations, sharp edges, missing parts, excessive wear (of moving parts) structural integrity, wear and vandalism.

Routine visual inspections relate only to the most obvious defects such as broken or missing parts, litter, vandalism and issues created by severe weather conditions (the intention is to identify hazards created by storm damage).

All inspections are non-dismantling, non-destructive and do not include any structural, toxicology or impact assessments defined in the standard; however, the inspector will undertake a manual test for stability and if equipment fails under manual load, or any other hazard is identified as an unacceptable risk, the owner/operator will be notified as soon as practicably possible.

The inspector will access all reasonably accessible equipment and will assess all reasonably accessible parts above the standing surface. Where it is not possible to access parts of the equipment without employing an alternative means of access the report will record the action required by the owner/operator to ensure the continued safe use of the equipment.

Ancillary equipment will be assessed using the inspector's knowledge and experience of the standards named in this document. (Note: Ancillary items are not included in the specific equipment-type parts of the EN 1176 series; hence they are not assessed for compliance with EN 1176 series and are subject to a general safety assessment).

The owner/operator is responsible for the overall safety of the equipment and area.

The inspector will not undertake any of the following works unless specifically agreed in writing at the time of order:

Checking the depth and underlying structural integrity of any surface areas and/or carrying out any testing of the impact attenuating properties of any surfaces; the identification of any corrosion, rot or other deterioration in any apparatus or equipment other than by an external inspection; the inspection of any equipment (or part thereof) that is beneath the playing surface (loose-fill materials may be moved to expose foundations); tightening any bolts, hinges or other fixing devices on any apparatus or equipment; assessing or inspecting any electrical installations contained on any site and/or apparatus and/or equipment; assessing or inspecting any water supplies and/or water features and/or any associated computerised systems (including carrying out any programming); where planting or trees are mentioned in the report no assessments of toxicity, suitability or condition are undertaken – the owner/operator should have suitable inspections provided by a competent person.

The owner/operator should have a 'design risk assessment' provided by the manufacturer/designer of the area for the equipment and location in which the facility is installed.

The operator is responsible for managing risks of their provision and is required by law to carry out a 'suitable and sufficient assessment' of the risks associated with a site or activity. This inspection shall be considered as contributing to the operator's discharge of this responsibility.

The details contained within the report are a snapshot of the condition at the time of inspection only and subsequent events may affect the condition of the facility. Suggested remedial actions are based on the knowledge and experience of the inspector and/or that of the inspection company. The owner/operator should always seek the advice of the manufacturer or a competent person when undertaking repairs and/or modifications to equipment.

A full copy of the Play Inspection Company Ltd. Terms & Conditions is available on our website (www.playinspections.co.uk)

The operator is responsible for following the guidance of the relevant standards. The standards give guidance on the installation, inspection, maintenance and operation of the various types of facilities. The inspection guidance is listed in Table 1, with an indication of which parts will be included in an RPII Annual or Post-Installation Inspection. The relevant standards also contain additional parts which the operator should follow.

| Inspection recommendations of relevant standards Refer to relevant standards for full text | Annual Main | RPII Annual/ Post Installation Inspection |
|---|-------------|--|
| 6.1 d) Overall levels of safety of equipment (see note 1) | ✓ | ✓ [1] |
| 6.1 d) Overall levels of safety of foundations (see note 1) | ✓ | ✓ [1] |
| 6.1 d) Overall levels of safety of playing surfaces (see note 2) | ✓ | ✓ [2] |
| 6.1 d) Compliance with the relevant parts of the standard and or risk assessment (see note 3) | ✓ | ✓ [3] |
| 6.1 d) Effects of weather | ✓ | ✓ |
| 6.1 d) Presence of rot, decay or corrosion (see note 1) | ✓ | ✓ [1] |
| 6.1 d) Assessment of repairs made or added or replaced components (see note 4) | ✓ | ✓ [4] |
| 6.1 d) Excavation or dismantling/additional measures | ✓ | ✗ |
| 6.2.1 Assessment of glass reinforced plastics (see note 5) | ✓ | ✓ [5] |
| 6.2.1 Inspection of one post equipment (see note 1) | ✓ | ✓ [1] |
| 6.2.4 Undertaking the Operators inspection protocol | ✓ | ✗ |

NB: The clause numbers in table 1 are taken from BS EN 1176 - Part 7:2020. The content is equally applicable to all other relevant standards listed herein. Playgrounds contain a range of equipment from different manufacturers and installed over a number of years; operators should implement any guidance provided by the manufacturer. Item specific detail is not readily available to RPII Playground Inspectors, whose report contributes to the operator's overall Annual Main Inspection as detailed in the relevant standards.

[1] A manual test only is undertaken for stability. Wear and instability are only detectable where readily apparent without dismantling or destruction and without the use of tools, excavation or specialist equipment. Rot and corrosion are tested or with a hammer and/or steel rod. Decay in timber may exist which can only be found with specialist equipment.


[2] Only the visible condition and dimensional compliance of surface extent is considered. Neither testing of impact attenuating properties nor measurement of the thickness of bound surfaces are undertaken on RPII annual inspections.

[3] The inspection assesses compliance where this can be tested on site using manual methods without dismantling, destruction and without the use of tools or specialist equipment.

[4] The operator should use manufacturer's recommended parts, or equivalent. We are unable to verify if such parts have been used, and any subsequent change in quality or performance.

[5] Visible glass fibres will be noted in reports. The operator is responsible for repairs or replacement.

Risk Assessment Matrix

| | | | Scores in the report are multiplication factors of Likelihood x Severity | | | | | |
|---|---|---|--|--|---|--|--|--|
| | | | Severity>> | | | | | |
| Likelihood | Very High probability, if the situation is not addressed an accident is almost certain. | 5 | Very High | VL (5) | L (10) | M (15) | H (20) | VH (25) |
| | High probability an accident is probable without any added factor. | 4 | High | VL (4) | L (8) | M (12) | H (16) | H (20) |
| | Moderate probability an incident is foreseeable. | 3 | Moderate | VL (3) | L (6) | L (9) | M (12) | M (15) |
| | Some probability, requires a combination of factors to take place. | 2 | Low | VL (2) | VL (4) | L (6) | L (8) | L (10) |
| | No significant probability; lightning strike, freak accident. | 1 | Very Low | VL (1) | VL (2) | VL (3) | VL (4) | VL (5) |
|  | | | | Very Low | Low | Moderate | High | Very High |
| | | | | 1 | 2 | 3 | 4 | 5 |
| | | | | No injury likely e.g. damaged or soiled clothing, minor bruising, grazes | Minor injury, laceration or bruising requiring first aid only | Injury requiring medical intervention e.g. cuts requiring stitches | Serious injury including concussions or fracture of long bones | Severe injury involving a potential life changing injury or fatality |
| | | | | Severity>> | | | | |
| <p>Note 1: The total risk scores included within our reports are a multiplication factor of the calculated Likelihood and Severity of each finding. Both Likelihood and Severity are given a number between 1 - 5 as shown on the matrix above and these two numbers are then multiplied together to give the total risk score that is shown against defects on the report. Total risk scores can be divided in both directions, i.e. a total risk score of 12 could be a Likelihood (3) x Severity (4) or Likelihood (4) x Severity (3).</p> <p>Note 2: When we inspect we only see a snapshot of the current condition of the equipment. It is the operators responsibility to ensure that there is a continuing level of maintenance to keep the equipment in good working order and the site fit for use.</p> | | | | | | | | |

Equipment has been assessed to the following standards where relevant:

- BS EN 1176 Parts 1-11 (Playground equipment and surfacing)
- BS EN 14974 (Facilities for users of roller sports equipment)
- BS EN 15312 (Free access multi-sports equipment)
- BS EN 16899 (Parkour Equipment)
- BS EN 16630 (Outdoor Fitness Equipment).



Corringham Town Park

Inspection Ref: 2209882

Site Ref: 52819

Inspected: 31-October-2023 - 08:35 by Liam Last

Risk Assessment: 12 Moderate Risk



Location:

The site is located in an area of public open space and is overlooked by a number of properties in the local community.

Disabled Access:

Some accessible features; an area that presents difficulties to the majority of people with disabilities but in favourable circumstances and certainly in partnership can be accessed.

12 - Moderate Risk

Item: Site General
Manufacturer: Owner/Operator
Surface Type: N/A
Item Quantity: 1
Equipment Compliance: N/A
Surface Area Compliance: N/A

Total Findings: 14



Finding 1

There are trip hazards at the edges of the surface - Reinstate surrounding surface levels to remove the trip points

Finding 3

There is some evidence of fire damage to the surfacing - Monitor for any further deterioration and repair as required

Finding 5

There are redundant bases in the area due to the removal of equipment and there are foundations that are exposed causing trips - Consider removing bases and reinstating the surface to cover the exposed foundations

Finding 7

There are significant gaps (over 30mm) between the surface and the edging or between the joints in the surface; these are large enough for a small foot to enter - Repair surfacing

Finding 9

There is no instruction label provided; an instruction label should be provided with each item of equipment in accordance with the requirements of BS EN 16630 - Provide appropriate instruction label/s

Finding 11

There is a large amount of gravel on the surface - Remove from area

Finding 13

There are sleepers missing from the timber retaining wall - Replace the missing sleepers

Finding 2

There is moderate damage to the surface - Repair the damaged areas of surfacing

Finding 4

There is broken glass present on site - Remove the broken glass and maintain the area

Finding 6

There is weed / vegetation growth on, between, or around the edges of the surfacing - Remove weed / vegetation growth

Finding 8

There is moderate damage to the surface - Repair the damaged areas of surfacing

Finding 10

The surface is lifting at the edges and creating trip points - Repair perimeter of surfacing to remove trip points

Finding 12

There are areas or parts of the timber edgings that have rotted or are missing - Replace all affected timbers

Finding 14

There is an exposed metal foundation present by the walkway - Remove



i 6 - Low Risk

Item: Sign
Manufacturer: Owner/Operator
Surface Type: N/A
Item Quantity: 1
Equipment Compliance: N/A
Surface Area Compliance: N/A

Total Findings: 3



Finding 1

It is recommended that signage, with information including the site address, contact information for maintenance issues and emergency contact details are provided for the facility - Provide in accordance with the recommendations

Finding 2

Signage should be provided for the outdoor fitness equipment in accordance with the requirements of BS EN 16630, key requirements of the sign include, but are not limited to, intended users, medical safety and emergency contact details - Provide appropriate signage

Finding 3

The signage is damaged or missing - Replace signage

i 8 - Low Risk

Item: Gate - Self Closing
Manufacturer: Not Identified
Surface Type: Grass
Item Quantity: 1
Equipment Compliance: N/A
Surface Area Compliance: N/A

Total Findings: 6



Finding 1

No slamming plate has been fitted to the gates and the gate leaves pass the slamming posts - Provide slamming plates

Finding 2

The gate is snagging on the surrounding surface preventing it from closing correctly - Carry out remedial works to ensure the gate closes correctly

Finding 3

There are openings that are less than 12mm that could trap or crush fingers - Provide a 12mm gap throughout full range of motion at both sides of gate

Finding 4

The surface has eroded in some areas and may be slippery in wet conditions - Reinstate the surface

Finding 5

The area under the gate has eroded leaving uneven areas, or the concrete foundations exposed, resulting in trip hazards at the entrance/exit to the playground - Reinstate to level with surrounding surfaces

Finding 6

The gate is not operating correctly - Take effective action to ensure the gate closes between 4 and 8 seconds

! 12 - Moderate Risk

Item: Gate - Maintenance
Manufacturer: Not Identified
Surface Type: Grass
Item Quantity: 1
Equipment Compliance: N/A
Surface Area Compliance: N/A

Total Findings: 5



Finding 1

The surface has eroded in some areas and may be slippery in wet conditions - Reinststate the surface

Finding 2

The item is loose in its foundations - Reinstall item to secure

Finding 3

The surface has eroded and the foundations are exposed - Reinststate surrounding surfaces to cover the foundations

Finding 4

There is no padlock on the maintenance gate - Provide a padlock to secure the gate

Finding 5

The gate has no drop bolt sleeves and/or drop bolts fitted - Provide drop bolt sleeves and/or drop bolts

i 6 - Low Risk

Item: Fence - Bow Top
Manufacturer: Not Identified
Surface Type: Grass
Item Quantity: 1
Equipment Compliance: N/A
Surface Area Compliance: N/A

Total Findings: 1



Finding 1

There is some damage to the fence sections - Monitor for any further deterioration and repair as required

8 - Low Risk

Item: Swing Barrier
Manufacturer: Not Identified
Surface Type: Grass
Item Quantity: 2
Equipment Compliance: N/A
Surface Area Compliance: N/A

Total Findings: 2



Finding 1

The surface has eroded and the foundations are exposed - Reinstate surrounding surfaces to cover the foundations

Finding 2

There is offensive graffiti present - Remove as soon as practicable

6 - Low Risk

Item: Bench
Manufacturer: Not Identified
Surface Type: Grass
Item Quantity: 2
Equipment Compliance: N/A
Surface Area Compliance: N/A

Total Findings: 1



Finding 1

The surface has eroded in some areas and may be slippery in wet conditions - Reinstate the surface

i 8 - Low Risk

Item: Picnic Table
Manufacturer: Not Identified
Surface Type: Concrete
Item Quantity: 3
Equipment Compliance: N/A
Surface Area Compliance: N/A

Total Findings: 4



Finding 1

The surfacing is severely damaged - Repair damaged areas of surfacing

Finding 2

There are trip hazards at the edges of the surface - Reinstate surrounding surface levels to remove the trip points

Finding 3

There is some evidence of fire damage to the item - Monitor for any further deterioration and repair as required

Finding 4

There is some graffiti present - Remove the graffiti

i 8 - Low Risk

Item: Litter Bin
Manufacturer: Not Identified
Surface Type: Grass
Item Quantity: 2
Equipment Compliance: N/A
Surface Area Compliance: N/A

Total Findings: 1



Finding 1

The bin is not securely fixed to the surface and there is some possibility of the item tipping or rolling over - Secure the bin to the ground

i 10 - Low Risk

Item: BMX Track
Manufacturer: Owner/Operator
Surface Type: Tarmac
Item Quantity: 1
Equipment Compliance: N/A
Surface Area Compliance: N/A

Total Findings: 7



Finding 1

BMX tracks are not currently covered by any British or European Standard; comments made in the report are based on the application of our knowledge and understanding of the Wheeled Sports Standard (BS EN 14974) and their maintenance and the area has been risk assessed accordingly - Monitor use and review risk assessment regularly

Finding 2

There are minor stress fractures in the tarmac surface - Monitor and repair if required

Finding 3

There is some evidence of fire damage to the surfacing - Monitor for any further deterioration and repair as required

Finding 4

There is algae, silt or moss growth on the surface resulting in slippery conditions - Clean and treat appropriately

Finding 5

There is some evidence of rot in the timber - Monitor for any further deterioration and replace as required

Finding 6

There is nettle growth in the area - Remove and maintain

Finding 7

The riding surface of the ramp has some damage apparent - Monitor for any further deterioration and repair as required

i 8 - Low Risk

Item: Multi Play (Toddler)
Manufacturer: Hags
Surface Type: Sand
Item Quantity: 1
Equipment Compliance: No
Surface Area Compliance: Yes
Life Expectancy: 5 -10 Years
Total Findings: 10



Finding 1

Parts of the timber are rough or splintered - Remove all rough or sharp edges

Finding 3

There is weed / vegetation growth on, between, or around the edges of the surfacing - Remove weed / vegetation growth

Finding 5

There are post / end caps missing or damage on the item - Replace missing/damaged post caps

Finding 7

There is some graffiti present - Remove the graffiti

Finding 9

There is/are finger entrapment/s in the slide starting section and the item fails to meet the requirements of BS EN 1176 Part 1 4.2.7.6 Entrapment of fingers - Remove entrapment

Finding 2

There is some evidence of rot in the timber - Monitor for any further deterioration and replace as required

Finding 4

There are a number of dents in the slide surface - Monitor for any further deterioration and repair as required

Finding 6

The timber stain is in poor condition - Prepare all affected parts and re-stain with an appropriate preservative

Finding 8

The paintwork on this item has been damaged or worn exposing the metal underneath which is rusting / corroding - Treat affected areas and repaint

Finding 10

There are trip hazards at the edges of the surface - Reinststate surrounding surface levels to remove the trip points

i 6 - Low Risk

Item: 1 Bay 2 Seat (Cradle)
Manufacturer: Wicksteed Playgrounds
Surface Type: Matta
Item Quantity: 1
Equipment Compliance: Yes
Surface Area Compliance: Yes
Life Expectancy: 5 -10 Years
Total Findings: 5



Finding 1

There are gaps opening in between the tiles - Reinstate the surface

Finding 3

The seat has minor damage or wear - Monitor for any further deterioration and replace as required

Finding 5

The surface has subsided in some areas - Monitor for any further deterioration and repair as required

Finding 2

The connecting lugs are showing signs of wear - Monitor for any further deterioration and repair as required

Finding 4

There is some notable evidence of chain wear - Monitor for any further deterioration and replace when 40% worn

6 - Low Risk

Item: Multi Play (Junior)
Manufacturer: Hags
Surface Type: Woodchip
Item Quantity: 1
Equipment Compliance: No
Surface Area Compliance: Yes
Life Expectancy: 5 -10 Years
Total Findings: 4



Finding 1

There are a number of dents in the slide surface - Monitor for any further deterioration and repair as required

Finding 2

There are post / end caps missing from the item - Replace missing post caps

Finding 3

There is some evidence of fire damage to the item - Monitor for any further deterioration and repair as required

Finding 4

There is/are finger entrapment/s in the platform due to fire damage and the item fails to meet the requirements of BS EN 1176 Part 1 4.2.7.6 Entrapment of fingers - Replace damaged slats to remove entrapment

4 - Very Low Risk

Item: Cone Climber
Manufacturer: Not Identified
Surface Type: Woodchip
Item Quantity: 1
Equipment Compliance: Yes
Surface Area Compliance: Yes
Life Expectancy: 5 -10 Years
Total Findings: 1



Finding 1

This item is satisfactory - no work required -

i 6 - Low Risk

Item: Misc Item
Manufacturer: Playworld Systems (Europe) Ltd
Surface Type: Woodchip
Item Quantity: 1
Equipment Compliance: Yes
Surface Area Compliance: Yes
Life Expectancy: 1 - 3 Years
Total Findings: 2



Finding 1

The item has missing component(s) - Consider replacing missing components

Finding 2

The bearing is showing signs of wear - Monitor for any further deterioration and replace as required

i 6 - Low Risk

Item: Spinning Pole
Manufacturer: Playworld Systems (Europe) Ltd
Surface Type: Woodchip
Item Quantity: 1
Equipment Compliance: Yes
Surface Area Compliance: Yes
Life Expectancy: 3 - 5 Years
Total Findings: 1



Finding 1

The bearing is showing signs of wear - Monitor for any further deterioration and replace as required

i 6 - Low Risk

Item: Stepping Stones
Manufacturer: Playworld Systems (Europe) Ltd
Surface Type: Woodchip
Item Quantity: 1
Equipment Compliance: Yes
Surface Area Compliance: Yes
Life Expectancy: 3 - 5 Years
Total Findings: 1



Finding 1

The item has been damaged - Monitor for any further deterioration and replace as required

i 9 - Low Risk

Item: Climbing Wall
Manufacturer: Not Identified
Surface Type: Woodchip
Item Quantity: 1
Equipment Compliance: Yes
Surface Area Compliance: Yes
Life Expectancy: 5 -10 Years
Total Findings: 1



Finding 1

The rope has worn and wire strands are exposed - Replace rope or net

8 - Low Risk

Item: Space Net
Manufacturer: Kompan Ltd
Surface Type: Woodchip
Item Quantity: 1
Equipment Compliance: No
Surface Area Compliance: Yes
Life Expectancy: 5 -10 Years
Total Findings: 1



Finding 1

There is a potential crushing point between the rope and the central post in contravention of BS EN 1176 Part 1 - Retention ropes to ensure the rope is spaced evenly around the post

6 - Low Risk

Item: 2 Bay Swing
Manufacturer: Playworld Systems (Europe) Ltd
Surface Type: Woodchip
Item Quantity: 1
Equipment Compliance: Yes
Surface Area Compliance: Yes
Life Expectancy: 5 -10 Years
Total Findings: 3



Finding 1

The bushes are showing signs of wear - Monitor for any further deterioration and replace as required

Finding 3

There is some evidence of fire damage to the item - Monitor for any further deterioration and repair as required

Finding 2

The paint is flaking off the metalwork - Rub down and re-paint

i 6 - Low Risk

Item: 1 Bay 2 Seat (Flat)
Manufacturer: Wicksteed Playgrounds
Surface Type: Wet Pour
Item Quantity: 1
Equipment Compliance: No
Surface Area Compliance: Yes
Life Expectancy: 5 -10 Years
Total Findings: 4



Finding 1

There are gaps opening in between the tiles - Monitor for any further deterioration and repair as required

Finding 2

The chain openings are in excess of 8.6mm and do not meet the recommendations of BS EN 1176 Part 1 - Monitor - No remedial work recommended

Finding 3

The connecting links are in excess of 8.6mm and less than 12mm and fail the requirements of BS EN 1176 Part 1; clause 4.2.13, Chains - Monitor use and replace with compliant links at the next maintenance cycle

Finding 4

There is some notable evidence of chain wear - Monitor for any further deterioration and replace when 40% worn

i 8 - Low Risk

Item: Cable Runway
Manufacturer: Sutcliffe Play Limited
Surface Type: Matta
Item Quantity: 1
Equipment Compliance: Yes
Surface Area Compliance: Yes

Total Findings: 5



Finding 1

We have completed a visual inspection of the suspension links, cable and fixing points from ground level, however it is not possible to fully inspect these areas without either hiring equipment to gain access or removing the cable and suspension and inspecting at ground level. We recommend that the main cable and fixing security is thoroughly inspected at least in accordance with the manufacturers recommendations to check for wear, damage, security or internal rusting; this will help to ensure the continued safe use of the equipment - Inspect in accordance with the manufacturers recommendations

Finding 2

The cableway seat has been damaged - Monitor for any further deterioration and replace as required

Finding 3

There is some notable evidence of chain wear - Monitor for any further deterioration and replace when 40% worn

Finding 4

The nylon inserts are worn or missing at the point the cable enters the traveller - Replace worn or missing inserts as required

Finding 5

The dampening spring or tyre is damaged or broken on the item - Replace spring or tyre

i 9 - Low Risk

Item: Leg Press
Manufacturer: The Great Outdoor Gym Company
Surface Type: Wet Pour
Item Quantity: 1
Equipment Compliance: Yes
Surface Area Compliance: Yes
Life Expectancy: 3 - 5 Years
Total Findings: 6



Finding 1

The connecting lugs are showing signs of wear - Monitor for any further deterioration and repair as required

Finding 3

There is some notable evidence of chain wear - Monitor for any further deterioration and replace when 40% worn

Finding 5

There is or are fixings missing on the item - Replace all missing fixings

Finding 2

There is some wear to the shackles - Monitor for any further deterioration and replace when 40% worn

Finding 4

The signage is damaged and sharp edges are present - Replace signage

Finding 6

There is/are bolt cap covers missing or damaged on the item - Replace missing or damaged bolt cap covers

9 - Low Risk

Item: Ab Station
Manufacturer: The Great Outdoor Gym Company
Surface Type: Wet Pour
Item Quantity: 1
Equipment Compliance: Yes
Surface Area Compliance: Yes
Life Expectancy: 5 -10 Years
Total Findings: 4



Finding 1

The paintwork on this item has been damaged or worn exposing the metal underneath which is rusting / corroding - Treat affected areas and repaint

Finding 2

There is/are bolt cap covers missing or damaged on the item - Replace missing or damaged bolt cap covers

Finding 3

The signage is damaged and sharp edges are present - Replace signage

Finding 4

There is some damage to the item - Monitor for any further deterioration and repair as required

10 - Low Risk

Item: Cycle
Manufacturer: The Great Outdoor Gym Company
Surface Type: Wet Pour
Item Quantity: 2
Equipment Compliance: Yes
Surface Area Compliance: Yes
Life Expectancy: 1 - 3 Years
Total Findings: 3



Finding 1

The mechanism has been removed from one item - Replace the missing components or remove the item completely

Finding 2

There is some damage to the seat - Monitor for any further deterioration and repair as required

Finding 3

One seat is missing - Replace seat

i 8 - Low Risk

Item: Hip Twister
Manufacturer: The Great Outdoor Gym Company
Surface Type: Wet Pour
Item Quantity: 1
Equipment Compliance: No
Surface Area Compliance: Yes
Life Expectancy: <12 Months
Total Findings: 3



Finding 1

The rotating user station is not appropriately marked with a guideline of user direction and/or the original position as required by BS EN 16630 - Monitor - No remedial work recommended

Finding 2

The deflection of the rotating user station exceeds the maximum 105 degrees required by BS EN 16630 - Monitor - No remedial work recommended

Finding 3

The frame has been removed - Consider replacing missing components

i 8 - Low Risk

Item: Hand Bike
Manufacturer: The Great Outdoor Gym Company
Surface Type: Wet Pour
Item Quantity: 1
Equipment Compliance: Yes
Surface Area Compliance: Yes
Life Expectancy: 3 - 5 Years
Total Findings: 3



Finding 1

There is some evidence of fire damage to the item - Monitor for any further deterioration and repair as required

Finding 2

The paintwork on this item has been damaged or worn exposing the metal underneath which is rusting / corroding - Treat affected areas and repaint

Finding 3

The bushes are worn or missing - Replace worn or missing bushes

8 - Low Risk

| | |
|---------------------------------|-------------------------------|
| Item: | Treadmill |
| Manufacturer: | The Great Outdoor Gym Company |
| Surface Type: | Wet Pour |
| Item Quantity: | 1 |
| Equipment Compliance: | Yes |
| Surface Area Compliance: | Yes |
| Life Expectancy: | 5 -10 Years |
| Total Findings: | 2 |



Finding 1

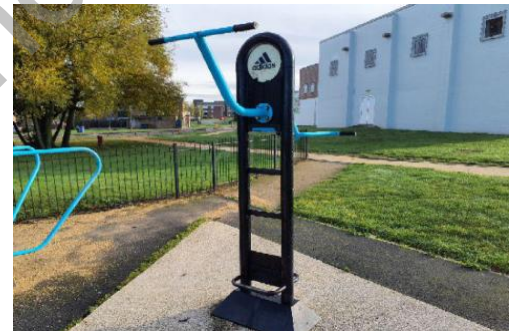
The paintwork on this item has been damaged or worn exposing the metal underneath which is rusting / corroding - Treat affected areas and repaint

Finding 2

The inspection plate has been removed - Replace the missing inspection plate

9 - Low Risk

| | |
|---------------------------------|-------------------------------|
| Item: | Pull Up Station |
| Manufacturer: | The Great Outdoor Gym Company |
| Surface Type: | Wet Pour |
| Item Quantity: | 1 |
| Equipment Compliance: | Yes |
| Surface Area Compliance: | Yes |
| Life Expectancy: | 5 -10 Years |
| Total Findings: | 2 |



Finding 1

There is/are bolt cap covers missing or damaged on the item - Replace missing or damaged bolt cap covers

Finding 2

The signage is damaged and sharp edges are present - Replace signage

i 6 - Low Risk

Item: Dip Station
Manufacturer: The Great Outdoor Gym Company
Surface Type: Wet Pour
Item Quantity: 1
Equipment Compliance: Yes
Surface Area Compliance: Yes
Life Expectancy: 5 -10 Years
Total Findings: 1

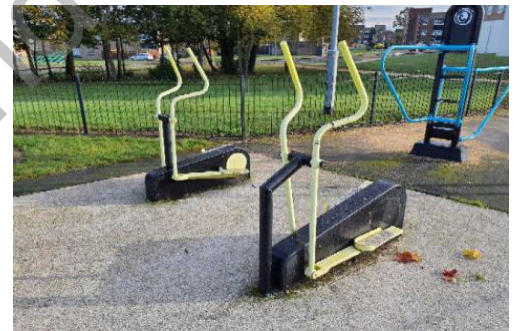


Finding 1

The paintwork on this item has been damaged or worn exposing the metal underneath which is rusting / corroding - Treat affected areas and repaint

i 8 - Low Risk

Item: Cross Trainer
Manufacturer: The Great Outdoor Gym Company
Surface Type: Wet Pour
Item Quantity: 2
Equipment Compliance: Yes
Surface Area Compliance: Yes
Life Expectancy: 3 - 5 Years
Total Findings: 2



Finding 1

The bushes are worn or missing - Replace worn or missing bushes

Finding 2

There is or are fixings missing on the item - Replace all missing fixings

! 12 - Moderate Risk

Item: Traverse Wall
Manufacturer: Park Leisure Ltd
Surface Type: Wet Pour
Item Quantity: 1
Equipment Compliance: Yes
Surface Area Compliance: Yes
Life Expectancy: 5 -10 Years
Total Findings: 3



Finding 1

There is some damage to the item - Monitor for any further deterioration and repair as required

Finding 2

There is a significant amount of broken glass on site - Remove the glass and maintain the area

Finding 3

There is or are fixings missing on the item - Replace all missing fixings

i 5 - Very Low Risk

Item: Goalmouth and Basketball Post
Manufacturer: Park Leisure Ltd
Surface Type: Wet Pour
Item Quantity: 1
Equipment Compliance: No
Surface Area Compliance: N/A
Life Expectancy: 5 -10 Years
Total Findings: 2



Finding 1

A clearly visible facility sign should be provided in a prominent position with the wording as detailed BS EN 15312- the equipment is not intended for children less than 3 years old- the warning - Do not climb on the framework or nets- the warning - Do not hang on the ring (if provided)- the warning - Do not wear rings or other jewellery- name and telephone number of the administrator- number to call in case of accident - Provide signage to BS EN 15312

Finding 2

There is/are finger entrapments in the frame and the item fails to meet the requirements of BS EN 15312 Clause 4.4.2.2 Entrapment of fingers - Monitor - No remedial work recommended

i 8 - Low Risk

Item: Kickabout Wall
Manufacturer: Park Leisure Ltd
Surface Type: Wet Pour
Item Quantity: 1
Equipment Compliance: Yes
Surface Area Compliance: Yes
Life Expectancy: 5 -10 Years
Total Findings: 4



Finding 1

A clearly visible facility sign should be provided in a prominent position with the wording as detailed BS EN 15312- the equipment is not intended for children less than 3 years old- the warning - Do not climb on the framework or nets- the warning - Do not hang on the ring (if provided)- the warning - Do not wear rings or other jewellery- name and telephone number of the administrator- number to call in case of accident - Provide signage to BS EN 15312

Finding 2

The paintwork on this item has been damaged or worn exposing the metal underneath which is rusting / corroding - Treat affected areas and repaint

Finding 3

There is some graffiti present - Remove the graffiti

Finding 4

There is or are fixings missing on the item - Replace all missing fixings

Findings information

8 - Low Risk (Finding 1)

Item: Ancillary Items - Site General
Manufacturer: Owner/Operator

Risk Level: L - Low Risk
Surface: N/A



Finding: There are trip hazards at the edges of the surface

Action: Reinstate surrounding surface levels to remove the trip points

i 8 - Low Risk (Finding 2)

Item: Ancillary Items - Site General
Manufacturer: Owner/Operator

Risk Level: L - Low Risk
Surface: N/A



Finding: There is moderate damage to the surface

Action: Repair the damaged areas of surfacing

i 8 - Low Risk (Finding 3)

Item: Ancillary Items - Site General
Manufacturer: Owner/Operator

Risk Level: L - Low Risk
Surface: N/A



Finding: There is some evidence of fire damage to the surfacing

Action: Monitor for any further deterioration and repair as required

i 6 - Low Risk (Finding 4)

Item: Ancillary Items - Site General
Manufacturer: Owner/Operator

Risk Level: L - Low Risk
Surface: N/A



Finding: There is broken glass present on site

Action: Remove the broken glass and maintain the area

i 8 - Low Risk (Finding 5)

Item: Ancillary Items - Site General
Manufacturer: Owner/Operator

Risk Level: L - Low Risk
Surface: N/A



Finding: There are redundant bases in the area due to the removal of equipment and there are foundations that are exposed causing trips

Action: Consider removing bases and reinstating the surface to cover the exposed foundations

i 6 - Low Risk (Finding 6)

Item: Ancillary Items - Site General
Manufacturer: Owner/Operator

Risk Level: L - Low Risk
Surface: N/A



Finding: There is weed / vegetation growth on, between, or around the edges of the surfacing **Action:** Remove weed / vegetation growth

i 9 - Low Risk (Finding 7)

Item: Ancillary Items - Site General
Manufacturer: Owner/Operator

Risk Level: L - Low Risk
Surface: N/A



Finding: There are significant gaps (over 30mm) between the surface and the edging or between the joints in the surface; these are large enough for a small foot to enter **Action:** Repair surfacing

! 12 - Moderate Risk (Finding 8)

Item: Ancillary Items - Site General
Manufacturer: Owner/Operator

Risk Level: M - Moderate Risk
Surface: N/A



Finding: There is moderate damage to the surface

Action: Repair the damaged areas of surfacing

i 5 - Very Low Risk (Finding 9)

Item: Ancillary Items - Site General
Manufacturer: Owner/Operator

Risk Level: V - Very Low Risk
Surface: N/A



Finding: There is no instruction label provided; an instruction label should be provided with each item of equipment in accordance with the requirements of BS EN 16630

Action: Provide appropriate instruction label/s

i 8 - Low Risk (Finding 10)

Item: Ancillary Items - Site General
Manufacturer: Owner/Operator

Risk Level: L - Low Risk
Surface: N/A



Finding: The surface is lifting at the edges and creating trip points
Action: Repair perimeter of surfacing to remove trip points

i 6 - Low Risk (Finding 11)

Item: Ancillary Items - Site General
Manufacturer: Owner/Operator

Risk Level: L - Low Risk
Surface: N/A



Finding: There is a large amount of gravel on the surface
Action: Remove from area

i 8 - Low Risk (Finding 12)

Item: Ancillary Items - Site General
Manufacturer: Owner/Operator

Risk Level: L - Low Risk
Surface: N/A



Finding: There are areas or parts of the timber edgings that have rotted or are missing
Action: Replace all affected timbers

i 8 - Low Risk (Finding 13)

Item: Ancillary Items - Site General
Manufacturer: Owner/Operator

Risk Level: L - Low Risk
Surface: N/A



Finding: There are sleepers missing from the timber retaining wall
Action: Replace the missing sleepers

i 8 - Low Risk (Finding 14)

Item: Ancillary Items - Site General
Manufacturer: Owner/Operator

Risk Level: L - Low Risk
Surface: N/A



Finding: There is an exposed metal foundation present by the walkway

Action: Remove

i 5 - Very Low Risk (Finding 1)

Item: Ancillary Items - Sign
Manufacturer: Owner/Operator

Risk Level: V - Very Low Risk
Surface: N/A



NO IMAGE
APPLICABLE

Finding: It is recommended that signage, with information including the site address, contact information for maintenance issues and emergency contact details are provided for the facility

Action: Provide in accordance with the recommendations

i 4 - Very Low Risk (Finding 2)

Item: Ancillary Items - Sign
Manufacturer: Owner/Operator

Risk Level: V - Very Low Risk
Surface: N/A



Finding: Signage should be provided for the outdoor fitness equipment in accordance with the requirements of BS EN 16630, key requirements of the sign include, but are not limited to, intended users, medical safety and emergency contact details

Action: Provide appropriate signage

i 6 - Low Risk (Finding 3)

Item: Ancillary Items - Sign
Manufacturer: Owner/Operator

Risk Level: L - Low Risk
Surface: N/A



Finding: The signage is damaged or missing

Action: Replace signage

i 8 - Low Risk (Finding 1)

Item: Gates - Gate - Self Closing
Manufacturer: Not Identified

Risk Level: L - Low Risk
Surface: Grass



Finding: No slamming plate has been fitted to the gates and the gate leaves pass the slamming posts
Action: Provide slamming plates

i 5 - Very Low Risk (Finding 2)

Item: Gates - Gate - Self Closing
Manufacturer: Not Identified

Risk Level: V - Very Low Risk
Surface: Grass



Finding: The gate is snagging on the surrounding surface preventing it from closing correctly
Action: Carry out remedial works to ensure the gate closes correctly

i 8 - Low Risk (Finding 3)

Item: Gates - Gate - Self Closing
Manufacturer: Not Identified

Risk Level: L - Low Risk
Surface: Grass



Finding: There are openings that are less than 12mm that could trap or crush fingers

Action: Provide a 12mm gap throughout full range of motion at both sides of gate

i 6 - Low Risk (Finding 4)

Item: Gates - Gate - Self Closing
Manufacturer: Not Identified

Risk Level: L - Low Risk
Surface: Grass



Finding: The surface has eroded in some areas and may be slippery in wet conditions

Action: Reinstate the surface

i 8 - Low Risk (Finding 5)

Item: Gates - Gate - Self Closing
Manufacturer: Not Identified

Risk Level: L - Low Risk
Surface: Grass



Finding: The area under the gate has eroded leaving uneven areas, or the concrete foundations exposed, resulting in trip hazards at the entrance/exit to the playground

Action: Reinststate to level with surrounding surfaces

i 5 - Very Low Risk (Finding 6)

Item: Gates - Gate - Self Closing
Manufacturer: Not Identified

Risk Level: V - Very Low Risk
Surface: Grass



Finding: The gate is not operating correctly

Action: Take effective action to ensure the gate closes between 4 and 8 seconds

i 6 - Low Risk (Finding 1)

Item: Gates - Gate - Maintenance
Manufacturer: Not Identified

Risk Level: L - Low Risk
Surface: Grass



Finding: The surface has eroded in some areas and may be slippery in wet conditions
Action: Reinststate the surface

! 12 - Moderate Risk (Finding 2)

Item: Gates - Gate - Maintenance
Manufacturer: Not Identified

Risk Level: M - Moderate Risk
Surface: Grass



Finding: The item is loose in its foundations
Action: Reinstall item to secure

i 8 - Low Risk (Finding 3)

Item: Gates - Gate - Maintenance
Manufacturer: Not Identified

Risk Level: L - Low Risk
Surface: Grass



Finding: The surface has eroded and the foundations are exposed

Action: Reinstate surrounding surfaces to cover the foundations

i 6 - Low Risk (Finding 4)

Item: Gates - Gate - Maintenance
Manufacturer: Not Identified

Risk Level: L - Low Risk
Surface: Grass



Finding: There is no padlock on the maintenance gate

Action: Provide a padlock to secure the gate

i 6 - Low Risk (Finding 5)

Item: Gates - Gate - Maintenance
Manufacturer: Not Identified

Risk Level: L - Low Risk
Surface: Grass



Finding: The gate has no drop bolt sleeves and/or drop bolts fitted

Action: Provide drop bolt sleeves and/or drop bolts

i 6 - Low Risk (Finding 1)

Item: Fences - Fence - Bow Top
Manufacturer: Not Identified

Risk Level: L - Low Risk
Surface: Grass



Finding: There is some damage to the fence sections

Action: Monitor for any further deterioration and repair as required

i 8 - Low Risk (Finding 1)

Item: Swings - Swing Barrier
Manufacturer: Not Identified

Risk Level: L - Low Risk
Surface: Grass



Finding: The surface has eroded and the foundations are exposed

Action: Reinststate surrounding surfaces to cover the foundations

i 0 - Risk Assessment not Undertaken (Finding 2)

Item: Swings - Swing Barrier
Manufacturer: Not Identified

Risk Level: N - Risk Assessment not Undertaken
Surface: Grass



Finding: There is offensive graffiti present

Action: Remove as soon as practicable

i 6 - Low Risk (Finding 1)

Item: Ancillary Items - Bench
Manufacturer: Not Identified

Risk Level: L - Low Risk
Surface: Grass



Finding: The surface has eroded in some areas and may be slippery in wet conditions
Action: Reinstate the surface

i 8 - Low Risk (Finding 1)

Item: Ancillary Items - Picnic Table
Manufacturer: Not Identified

Risk Level: L - Low Risk
Surface: Concrete



Finding: The surfacing is severely damaged
Action: Repair damaged areas of surfacing

i 8 - Low Risk (Finding 2)

Item: Ancillary Items - Picnic Table
Manufacturer: Not Identified

Risk Level: L - Low Risk
Surface: Concrete



Finding: There are trip hazards at the edges of the surface

Action: Reinstate surrounding surface levels to remove the trip points

i 6 - Low Risk (Finding 3)

Item: Ancillary Items - Picnic Table
Manufacturer: Not Identified

Risk Level: L - Low Risk
Surface: Concrete



Finding: There is some evidence of fire damage to the item

Action: Monitor for any further deterioration and repair as required

i 0 - Risk Assessment not Undertaken (Finding 4)

Item: Ancillary Items - Picnic Table
Manufacturer: Not Identified

Risk Level: N - Risk Assessment not Undertaken
Surface: Concrete



Finding: There is some graffiti present

Action: Remove the graffiti

i 8 - Low Risk (Finding 1)

Item: Ancillary Items - Litter Bin
Manufacturer: Not Identified

Risk Level: L - Low Risk
Surface: Grass



Finding: The bin is not securely fixed to the surface and there is some possibility of the item tipping or rolling over

Action: Secure the bin to the ground

i 10 - Low Risk (Finding 1)

Item: Wheeled Sports - BMX Track
Manufacturer: Owner/Operator

Risk Level: L - Low Risk
Surface: Tarmac



NO IMAGE
APPLICABLE

Finding: BMX tracks are not currently covered by any British or European Standard; comments made in the report are based on the application of our knowledge and understanding of the Wheeled Sports Standard (BS EN 14974) and their maintenance and the area has been risk assessed accordingly

Action: Monitor use and review risk assessment regularly

i 6 - Low Risk (Finding 2)

Item: Wheeled Sports - BMX Track
Manufacturer: Owner/Operator

Risk Level: L - Low Risk
Surface: Tarmac



Finding: There are minor stress fractures in the tarmac surface

Action: Monitor and repair if required

i 8 - Low Risk (Finding 3)

Item: Wheeled Sports - BMX Track
Manufacturer: Owner/Operator

Risk Level: L - Low Risk
Surface: Tarmac



Finding: There is some evidence of fire damage to the surfacing

Action: Monitor for any further deterioration and repair as required

i 8 - Low Risk (Finding 4)

Item: Wheeled Sports - BMX Track
Manufacturer: Owner/Operator

Risk Level: L - Low Risk
Surface: Tarmac



Finding: There is algae, silt or moss growth on the surface resulting in slippery conditions

Action: Clean and treat appropriately

i 6 - Low Risk (Finding 5)

Item: Wheeled Sports - BMX Track
Manufacturer: Owner/Operator

Risk Level: L - Low Risk
Surface: Tarmac



Finding: There is some evidence of rot in the timber

Action: Monitor for any further deterioration and replace as required

i 8 - Low Risk (Finding 6)

Item: Wheeled Sports - BMX Track
Manufacturer: Owner/Operator

Risk Level: L - Low Risk
Surface: Tarmac



Finding: There is nettle growth in the area

Action: Remove and maintain

i 6 - Low Risk (Finding 7)

Item: Wheeled Sports - BMX Track
Manufacturer: Owner/Operator

Risk Level: L - Low Risk
Surface: Tarmac



Finding: The riding surface of the ramp has some damage apparent

Action: Monitor for any further deterioration and repair as required

i 6 - Low Risk (Finding 1)

Item: Activity Equipment - Multi Play (Toddler)
Manufacturer: Hags

Risk Level: L - Low Risk
Surface: Sand



Finding: Parts of the timber are rough or splintered

Action: Remove all rough or sharp edges

i 6 - Low Risk (Finding 2)

Item: Activity Equipment - Multi Play (Toddler)
Manufacturer: Hags

Risk Level: L - Low Risk
Surface: Sand



Finding: There is some evidence of rot in the timber

Action: Monitor for any further deterioration and replace as required

i 6 - Low Risk (Finding 3)

Item: Activity Equipment - Multi Play (Toddler)
Manufacturer: Hags

Risk Level: L - Low Risk
Surface: Sand



Finding: There is weed / vegetation growth on, between, or around the edges of the surfacing

Action: Remove weed / vegetation growth

i 4 - Very Low Risk (Finding 4)

Item: Activity Equipment - Multi Play (Toddler)
Manufacturer: Hags

Risk Level: V - Very Low Risk
Surface: Sand



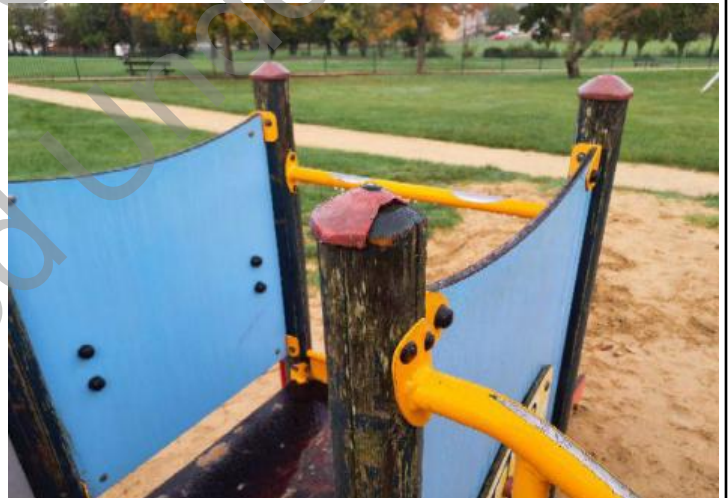
Finding: There are a number of dents in the slide surface

Action: Monitor for any further deterioration and repair as required

i 6 - Low Risk (Finding 5)

Item: Activity Equipment - Multi Play (Toddler)
Manufacturer: Hags

Risk Level: L - Low Risk
Surface: Sand



Finding: There are post / end caps missing or damage on the item

Action: Replace missing/damaged post caps

i 6 - Low Risk (Finding 6)

Item: Activity Equipment - Multi Play (Toddler)
Manufacturer: Hags

Risk Level: L - Low Risk
Surface: Sand



Finding: The timber stain is in poor condition

Action: Prepare all affected parts and re-stain with an appropriate preservative

i 0 - Risk Assessment not Undertaken (Finding 7)

Item: Activity Equipment - Multi Play (Toddler)
Manufacturer: Hags

Risk Level: N - Risk Assessment not Undertaken
Surface: Sand



Finding: There is some graffiti present

Action: Remove the graffiti

i 6 - Low Risk (Finding 8)

Item: Activity Equipment - Multi Play (Toddler)
Manufacturer: Hags

Risk Level: L - Low Risk
Surface: Sand



Finding: The paintwork on this item has been damaged or worn exposing the metal underneath which is rusting / corroding

Action: Treat affected areas and repaint

i 5 - Very Low Risk (Finding 9)

Item: Activity Equipment - Multi Play (Toddler)
Manufacturer: Hags

Risk Level: V - Very Low Risk
Surface: Sand



Finding: There is/are finger entrapment/s in the slide starting section and the item fails to meet the requirements of BS EN 1176 Part 1 4.2.7.6 Entrapment of fingers

Action: Remove entrapment

i 8 - Low Risk (Finding 10)

Item: Activity Equipment - Multi Play (Toddler)
Manufacturer: Hags

Risk Level: L - Low Risk
Surface: Sand



Finding: There are trip hazards at the edges of the surface
Action: Reinstate surrounding surface levels to remove the trip points

i 6 - Low Risk (Finding 1)

Item: Swings - 1 Bay 2 Seat (Cradle)
Manufacturer: Wicksteed Playgrounds

Risk Level: L - Low Risk
Surface: Matta



Finding: There are gaps opening in between the tiles
Action: Reinstate the surface

i 6 - Low Risk (Finding 2)

Item: Swings - 1 Bay 2 Seat (Cradle)
Manufacturer: Wicksteed Playgrounds

Risk Level: L - Low Risk
Surface: Matta



Finding: The connecting lugs are showing signs of wear

Action: Monitor for any further deterioration and repair as required

i 6 - Low Risk (Finding 3)

Item: Swings - 1 Bay 2 Seat (Cradle)
Manufacturer: Wicksteed Playgrounds

Risk Level: L - Low Risk
Surface: Matta



Finding: The seat has minor damage or wear

Action: Monitor for any further deterioration and replace as required

i 6 - Low Risk (Finding 4)

Item: Swings - 1 Bay 2 Seat (Cradle)
Manufacturer: Wicksteed Playgrounds

Risk Level: L - Low Risk
Surface: Matta



Finding: There is some notable evidence of chain wear

Action: Monitor for any further deterioration and replace when 40% worn

i 6 - Low Risk (Finding 5)

Item: Swings - 1 Bay 2 Seat (Cradle)
Manufacturer: Wicksteed Playgrounds

Risk Level: L - Low Risk
Surface: Matta



Finding: The surface has subsided in some areas

Action: Monitor for any further deterioration and repair as required

i 4 - Very Low Risk (Finding 1)

Item: Activity Equipment - Multi Play (Junior)
Manufacturer: Hags

Risk Level: V - Very Low Risk
Surface: Woodchip



Finding: There are a number of dents in the slide surface

Action: Monitor for any further deterioration and repair as required

i 6 - Low Risk (Finding 2)

Item: Activity Equipment - Multi Play (Junior)
Manufacturer: Hags

Risk Level: L - Low Risk
Surface: Woodchip



Finding: There are post / end caps missing from the item

Action: Replace missing post caps

i 6 - Low Risk (Finding 3)

Item: Activity Equipment - Multi Play (Junior)
Manufacturer: Hags

Risk Level: L - Low Risk
Surface: Woodchip



Finding: There is some evidence of fire damage to the item **Action:** Monitor for any further deterioration and repair as required

5 - Very Low Risk (Finding 4)

Item: Activity Equipment - Multi Play (Junior)
Manufacturer: Hags

Risk Level: V - Very Low Risk
Surface: Woodchip



Finding: There is/are finger entrapment/s in the platform due to fire damage and the item fails to meet the requirements of BS EN 1176 Part 1 4.2.7.6 Entrapment of fingers

Action: Replace damaged slats to remove entrapment

6 - Low Risk (Finding 1)

Item: Rotor Play - Misc Item
Manufacturer: Playworld Systems (Europe) Ltd

Risk Level: L - Low Risk
Surface: Woodchip



Finding: The item has missing component(s)

Action: Consider replacing missing components

i 6 - Low Risk (Finding 2)

Item: Rotor Play - Misc Item
Manufacturer: Playworld Systems (Europe) Ltd

Risk Level: L - Low Risk
Surface: Woodchip



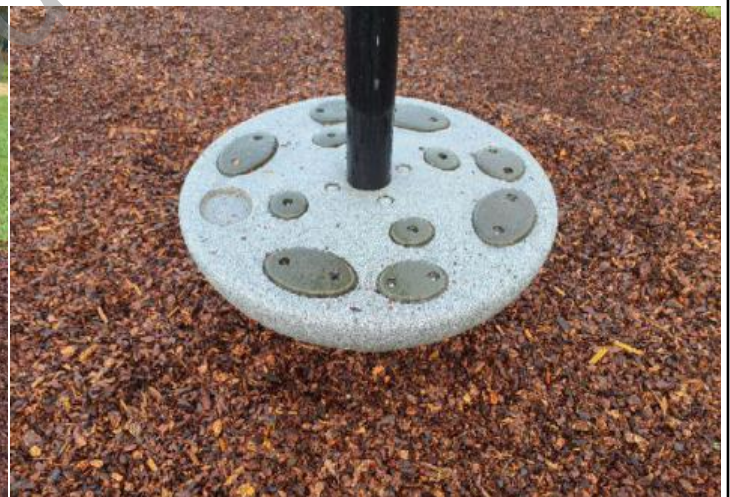
Finding: The bearing is showing signs of wear

Action: Monitor for any further deterioration and replace as required

i 6 - Low Risk (Finding 1)

Item: Rotor Play - Spinning Pole
Manufacturer: Playworld Systems (Europe) Ltd

Risk Level: L - Low Risk
Surface: Woodchip



Finding: The bearing is showing signs of wear

Action: Monitor for any further deterioration and replace as required

i 6 - Low Risk (Finding 1)

Item: Activity Equipment - Stepping Stones
Manufacturer: Playworld Systems (Europe) Ltd

Risk Level: L - Low Risk
Surface: Woodchip



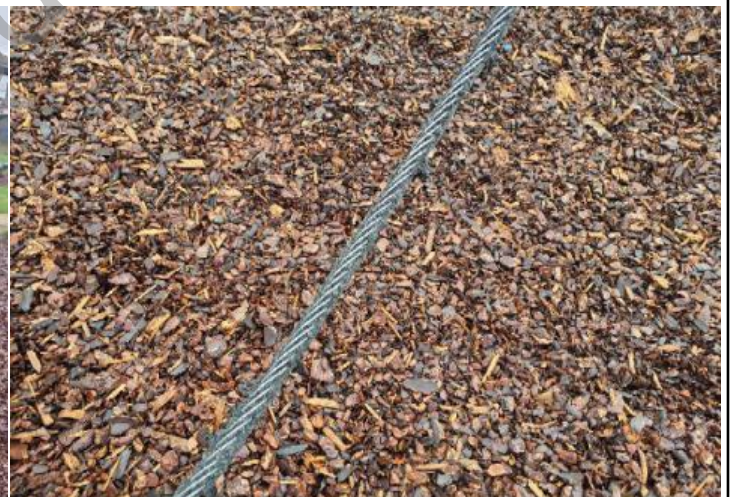
Finding: The item has been damaged

Action: Monitor for any further deterioration and replace as required

i 9 - Low Risk (Finding 1)

Item: Activity Equipment - Climbing Wall
Manufacturer: Not Identified

Risk Level: L - Low Risk
Surface: Woodchip



Finding: The rope has worn and wire strands are exposed

Action: Replace rope or net

i 8 - Low Risk (Finding 1)

Item: Activity Equipment - Space Net
Manufacturer: Kompan Ltd

Risk Level: L - Low Risk
Surface: Woodchip



Finding: There is a potential crushing point between the rope and the central post in contravention of BS EN 1176 Part 1

Action: Re-tension ropes to ensure the rope is spaced evenly around the post

i 4 - Very Low Risk (Finding 1)

Item: Swings - 2 Bay Swing
Manufacturer: Playworld Systems (Europe) Ltd

Risk Level: V - Very Low Risk
Surface: Woodchip



Finding: The bushes are showing signs of wear

Action: Monitor for any further deterioration and replace as required

i 6 - Low Risk (Finding 2)

Item: Swings - 2 Bay Swing
Manufacturer: Playworld Systems (Europe) Ltd

Risk Level: L - Low Risk
Surface: Woodchip



Finding: The paint is flaking off the metalwork

Action: Rub down and re-paint

i 6 - Low Risk (Finding 3)

Item: Swings - 2 Bay Swing
Manufacturer: Playworld Systems (Europe) Ltd

Risk Level: L - Low Risk
Surface: Woodchip



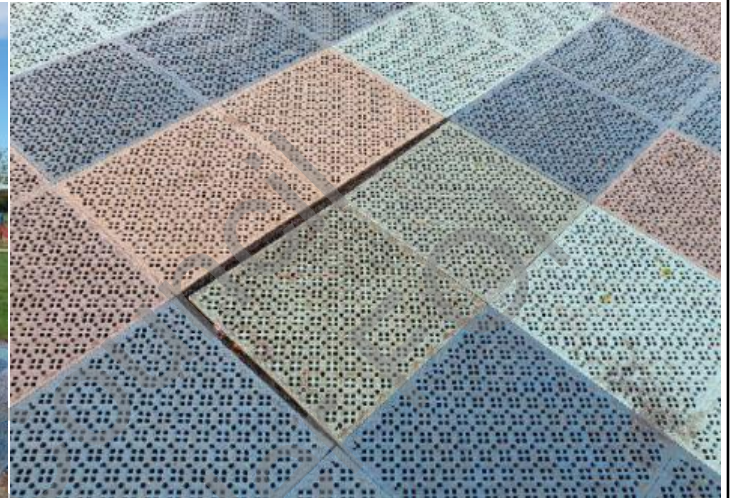
Finding: There is some evidence of fire damage to the item

Action: Monitor for any further deterioration and repair as required

i 6 - Low Risk (Finding 1)

Item: Swings - 1 Bay 2 Seat (Flat)
Manufacturer: Wicksteed Playgrounds

Risk Level: L - Low Risk
Surface: Wet Pour



Finding: There are gaps opening in between the tiles

Action: Monitor for any further deterioration and repair as required

i 5 - Very Low Risk (Finding 2)

Item: Swings - 1 Bay 2 Seat (Flat)
Manufacturer: Wicksteed Playgrounds

Risk Level: V - Very Low Risk
Surface: Wet Pour



Finding: The chain openings are in excess of 8.6mm and do not meet the recommendations of BS EN 1176 Part 1

Action: Monitor - No remedial work recommended

i 5 - Very Low Risk (Finding 3)

Item: Swings - 1 Bay 2 Seat (Flat)
Manufacturer: Wicksteed Playgrounds

Risk Level: V - Very Low Risk
Surface: Wet Pour



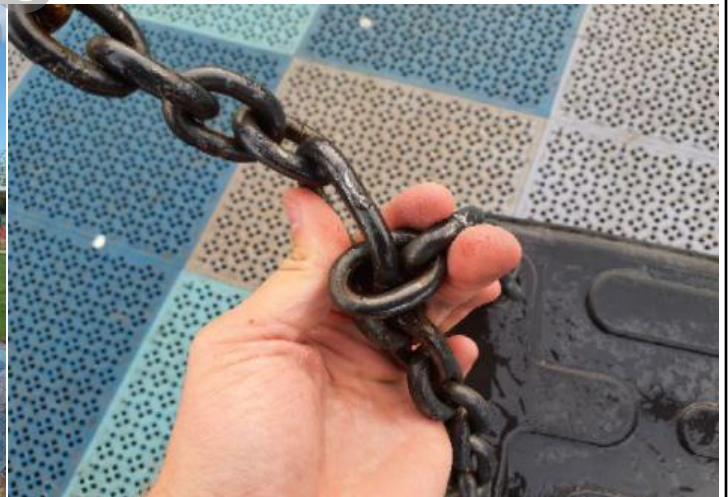
Finding: The connecting links are in excess of 8.6mm and less than 12mm and fail the requirements of BS EN 1176 Part 1; clause 4.2.13, Chains

Action: Monitor use and replace with compliant links at the next maintenance cycle

i 6 - Low Risk (Finding 4)

Item: Swings - 1 Bay 2 Seat (Flat)
Manufacturer: Wicksteed Playgrounds

Risk Level: L - Low Risk
Surface: Wet Pour



Finding: There is some notable evidence of chain wear

Action: Monitor for any further deterioration and replace when 40% worn

i 0 - Risk Assessment not Undertaken (Finding 1)

Item: Other - Cable Runway
Manufacturer: Sutcliffe Play Limited

Risk Level: N - Risk Assessment not Undertaken
Surface: Matta



Finding: We have completed a visual inspection of the suspension links, cable and fixing points from ground level, however it is not possible to fully inspect these areas without either hiring equipment to gain access or removing the cable and suspension and inspecting at ground level. We recommend that the main cable and fixing security is thoroughly inspected at least in accordance with the manufacturers recommendations to check for wear, damage, security or internal rusting; this will help to ensure the continued safe use of the equipment

Action: Inspect in accordance with the manufacturers recommendations

i 6 - Low Risk (Finding 2)

Item: Other - Cable Runway
Manufacturer: Sutcliffe Play Limited

Risk Level: L - Low Risk
Surface: Matta



Finding: The cableway seat has been damaged

Action: Monitor for any further deterioration and replace as required

i 6 - Low Risk (Finding 3)

Item: Other - Cable Runway
Manufacturer: Sutcliffe Play Limited

Risk Level: L - Low Risk
Surface: Matta



Finding: There is some notable evidence of chain wear

Action: Monitor for any further deterioration and replace when 40% worn

i 5 - Very Low Risk (Finding 4)

Item: Other - Cable Runway
Manufacturer: Sutcliffe Play Limited

Risk Level: V - Very Low Risk
Surface: Matta



Finding: The nylon inserts are worn or missing at the point the cable enters the traveller

Action: Replace worn or missing inserts as required

i 8 - Low Risk (Finding 5)

Item: Other - Cable Runway
Manufacturer: Sutcliffe Play Limited

Risk Level: L - Low Risk
Surface: Matta



Finding: The dampening spring or tyre is damaged or broken on the item

Action: Replace spring or tyre

i 6 - Low Risk (Finding 1)

Item: Outdoor Fitness Equipment - Leg Press
Manufacturer: The Great Outdoor Gym Company

Risk Level: L - Low Risk
Surface: Wet Pour



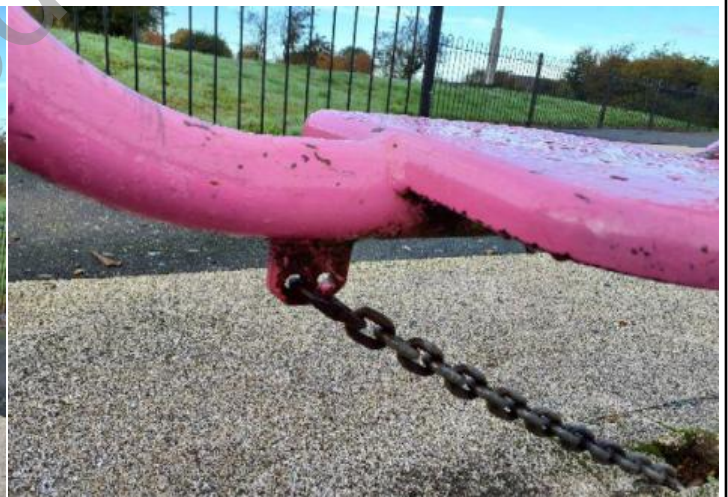
Finding: The connecting lugs are showing signs of wear

Action: Monitor for any further deterioration and repair as required

i 6 - Low Risk (Finding 2)

Item: Outdoor Fitness Equipment - Leg Press
Manufacturer: The Great Outdoor Gym Company

Risk Level: L - Low Risk
Surface: Wet Pour



Finding: There is some wear to the shackles

Action: Monitor for any further deterioration and replace when 40% worn

i 6 - Low Risk (Finding 3)

Item: Outdoor Fitness Equipment - Leg Press
Manufacturer: The Great Outdoor Gym Company

Risk Level: L - Low Risk
Surface: Wet Pour



Finding: There is some notable evidence of chain wear

Action: Monitor for any further deterioration and replace when 40% worn

i 9 - Low Risk (Finding 4)

Item: Outdoor Fitness Equipment - Leg Press
Manufacturer: The Great Outdoor Gym Company

Risk Level: L - Low Risk
Surface: Wet Pour



Finding: The signage is damaged and sharp edges are present

Action: Replace signage

i 8 - Low Risk (Finding 5)

Item: Outdoor Fitness Equipment - Leg Press
Manufacturer: The Great Outdoor Gym Company

Risk Level: L - Low Risk
Surface: Wet Pour



Finding: There is or are fixings missing on the item

Action: Replace all missing fixings

i 4 - Very Low Risk (Finding 6)

Item: Outdoor Fitness Equipment - Leg Press
Manufacturer: The Great Outdoor Gym Company

Risk Level: V - Very Low Risk
Surface: Wet Pour



Finding: There is/are bolt cap covers missing or damaged on the item

Action: Replace missing or damaged bolt cap covers

i 6 - Low Risk (Finding 1)

Item: Outdoor Fitness Equipment - Ab Station
Manufacturer: The Great Outdoor Gym Company

Risk Level: L - Low Risk
Surface: Wet Pour



Finding: The paintwork on this item has been damaged or worn exposing the metal underneath which is rusting / corroding

Action: Treat affected areas and repaint

i 4 - Very Low Risk (Finding 2)

Item: Outdoor Fitness Equipment - Ab Station
Manufacturer: The Great Outdoor Gym Company

Risk Level: V - Very Low Risk
Surface: Wet Pour



Finding: There is/are bolt cap covers missing or damaged on the item

Action: Replace missing or damaged bolt cap covers

i 9 - Low Risk (Finding 3)

Item: Outdoor Fitness Equipment - Ab Station
Manufacturer: The Great Outdoor Gym Company

Risk Level: L - Low Risk
Surface: Wet Pour



Finding: The signage is damaged and sharp edges are present

Action: Replace signage

i 6 - Low Risk (Finding 4)

Item: Outdoor Fitness Equipment - Ab Station
Manufacturer: The Great Outdoor Gym Company

Risk Level: L - Low Risk
Surface: Wet Pour



Finding: There is some damage to the item

Action: Monitor for any further deterioration and repair as required

i 10 - Low Risk (Finding 1)

Item: Outdoor Fitness Equipment - Cycle
Manufacturer: The Great Outdoor Gym Company

Risk Level: L - Low Risk
Surface: Wet Pour



Finding: The mechanism has been removed from one item **Action:** Replace the missing components or remove the item completely

i 6 - Low Risk (Finding 2)

Item: Outdoor Fitness Equipment - Cycle
Manufacturer: The Great Outdoor Gym Company

Risk Level: L - Low Risk
Surface: Wet Pour



Finding: There is some damage to the seat **Action:** Monitor for any further deterioration and repair as required

i 6 - Low Risk (Finding 3)

Item: Outdoor Fitness Equipment - Cycle
Manufacturer: The Great Outdoor Gym Company

Risk Level: L - Low Risk
Surface: Wet Pour



Finding: One seat is missing

Action: Replace seat

i 6 - Low Risk (Finding 1)

Item: Outdoor Fitness Equipment - Hip Twister
Manufacturer: The Great Outdoor Gym Company

Risk Level: L - Low Risk
Surface: Wet Pour



Finding: The rotating user station is not appropriately marked with a guideline of user direction and/or the original position as required by BS EN 16630

Action: Monitor - No remedial work recommended

i 8 - Low Risk (Finding 2)

Item: Outdoor Fitness Equipment - Hip Twister
Manufacturer: The Great Outdoor Gym Company

Risk Level: L - Low Risk
Surface: Wet Pour



Finding: The deflection of the rotating user station exceeds the maximum 105 degrees required by BS EN 16630
Action: Monitor - No remedial work recommended

i 8 - Low Risk (Finding 3)

Item: Outdoor Fitness Equipment - Hip Twister
Manufacturer: The Great Outdoor Gym Company

Risk Level: L - Low Risk
Surface: Wet Pour



Finding: The frame has been removed
Action: Consider replacing missing components

i 6 - Low Risk (Finding 1)

Item: Outdoor Fitness Equipment - Hand Bike
Manufacturer: The Great Outdoor Gym Company

Risk Level: L - Low Risk
Surface: Wet Pour



Finding: There is some evidence of fire damage to the item **Action:** Monitor for any further deterioration and repair as required

i 6 - Low Risk (Finding 2)

Item: Outdoor Fitness Equipment - Hand Bike
Manufacturer: The Great Outdoor Gym Company

Risk Level: L - Low Risk
Surface: Wet Pour



Finding: The paintwork on this item has been damaged or worn exposing the metal underneath which is rusting / corroding **Action:** Treat affected areas and repaint

i 8 - Low Risk (Finding 3)

Item: Outdoor Fitness Equipment - Hand Bike
Manufacturer: The Great Outdoor Gym Company

Risk Level: L - Low Risk
Surface: Wet Pour



Finding: The bushes are worn or missing

Action: Replace worn or missing bushes

i 6 - Low Risk (Finding 1)

Item: Outdoor Fitness Equipment - Treadmill
Manufacturer: The Great Outdoor Gym Company

Risk Level: L - Low Risk
Surface: Wet Pour



Finding: The paintwork on this item has been damaged or worn exposing the metal underneath which is rusting / corroding

Action: Treat affected areas and repaint

i 8 - Low Risk (Finding 2)

Item: Outdoor Fitness Equipment - Treadmill
Manufacturer: The Great Outdoor Gym Company

Risk Level: L - Low Risk
Surface: Wet Pour



Finding: The inspection plate has been removed

Action: Replace the missing inspection plate

i 4 - Very Low Risk (Finding 1)

Item: Outdoor Fitness Equipment - Pull Up Station
Manufacturer: The Great Outdoor Gym Company

Risk Level: V - Very Low Risk
Surface: Wet Pour



Finding: There is/are bolt cap covers missing or damaged on the item

Action: Replace missing or damaged bolt cap covers

i 9 - Low Risk (Finding 2)

Item: Outdoor Fitness Equipment - Pull Up Station
Manufacturer: The Great Outdoor Gym Company

Risk Level: L - Low Risk
Surface: Wet Pour



Finding: The signage is damaged and sharp edges are present

Action: Replace signage

i 6 - Low Risk (Finding 1)

Item: Outdoor Fitness Equipment - Dip Station
Manufacturer: The Great Outdoor Gym Company

Risk Level: L - Low Risk
Surface: Wet Pour



Finding: The paintwork on this item has been damaged or worn exposing the metal underneath which is rusting / corroding

Action: Treat affected areas and repaint

i 8 - Low Risk (Finding 1)

Item: Outdoor Fitness Equipment - Cross Trainer **Risk Level:** L - Low Risk
Manufacturer: The Great Outdoor Gym Company **Surface:** Wet Pour



Finding: The bushes are worn or missing

Action: Replace worn or missing bushes

i 8 - Low Risk (Finding 2)

Item: Outdoor Fitness Equipment - Cross Trainer **Risk Level:** L - Low Risk
Manufacturer: The Great Outdoor Gym Company **Surface:** Wet Pour



Finding: There is or are fixings missing on the item

Action: Replace all missing fixings

i 6 - Low Risk (Finding 1)

Item: Activity Equipment - Traverse Wall
Manufacturer: Park Leisure Ltd

Risk Level: L - Low Risk
Surface: Wet Pour



Finding: There is some damage to the item

Action: Monitor for any further deterioration and repair as required

! 12 - Moderate Risk (Finding 2)

Item: Activity Equipment - Traverse Wall
Manufacturer: Park Leisure Ltd

Risk Level: M - Moderate Risk
Surface: Wet Pour



Finding: There is a significant amount of broken glass on site

Action: Remove the glass and maintain the area

i 8 - Low Risk (Finding 3)

Item: Activity Equipment - Traverse Wall
Manufacturer: Park Leisure Ltd

Risk Level: L - Low Risk
Surface: Wet Pour



Finding: There is or are fixings missing on the item

Action: Replace all missing fixings

i 5 - Very Low Risk (Finding 1)

Item: Multi Use Games Area - Goalmouth and Basketball Post
Manufacturer: Park Leisure Ltd

Risk Level: V - Very Low Risk
Surface: Wet Pour



NO IMAGE
APPLICABLE

Finding: A clearly visible facility sign should be provided in a prominent position with the wording as detailed BS EN 15312- the equipment is not intended for children less than 3 years old- the warning - Do not climb on the framework or nets- the warning - Do not hang on the ring (if provided)- the warning - Do not wear rings or other jewellery- name and telephone number of the administrator- number to call in case of accident

Action: Provide signage to BS EN 15312

i 5 - Very Low Risk (Finding 2)

Item: Multi Use Games Area - Goalmouth and Basketball Post
Manufacturer: Park Leisure Ltd

Risk Level: V - Very Low Risk
Surface: Wet Pour



Finding: There is/are finger entrapments in the frame and the item fails to meet the requirements of BS EN 15312 Clause 4.4.2.2 Entrapment of fingers

Action: Monitor - No remedial work recommended

i 5 - Very Low Risk (Finding 1)

Item: Multi Use Games Area - Kickabout Wall
Manufacturer: Park Leisure Ltd

Risk Level: V - Very Low Risk
Surface: Wet Pour



NO IMAGE
APPLICABLE

Finding: A clearly visible facility sign should be provided in a prominent position with the wording as detailed BS EN 15312- the equipment is not intended for children less than 3 years old- the warning - Do not climb on the framework or nets- the warning - Do not hang on the ring (if provided)- the warning - Do not wear rings or other jewellery- name and telephone number of the administrator- number to call in case of accident

Action: Provide signage to BS EN 15312

i 6 - Low Risk (Finding 2)

Item: Multi Use Games Area - Kickabout Wall
Manufacturer: Park Leisure Ltd

Risk Level: L - Low Risk
Surface: Wet Pour



Finding: The paintwork on this item has been damaged or worn exposing the metal underneath which is rusting / corroding

Action: Treat affected areas and repaint

i 0 - Risk Assessment not Undertaken (Finding 3)

Item: Multi Use Games Area - Kickabout Wall
Manufacturer: Park Leisure Ltd

Risk Level: N - Risk Assessment not Undertaken
Surface: Wet Pour



Finding: There is some graffiti present

Action: Remove the graffiti

i 8 - Low Risk (Finding 4)

Item: Multi Use Games Area - Kickabout Wall
Manufacturer: Park Leisure Ltd

Risk Level: L - Low Risk
Surface: Wet Pour



Finding: There is or are fixings missing on the item

Action: Replace all missing fixings