


Key to Restriction Types Displayed

 South Ockendon Recreation Ground Pay & Display Off-Street Car Park



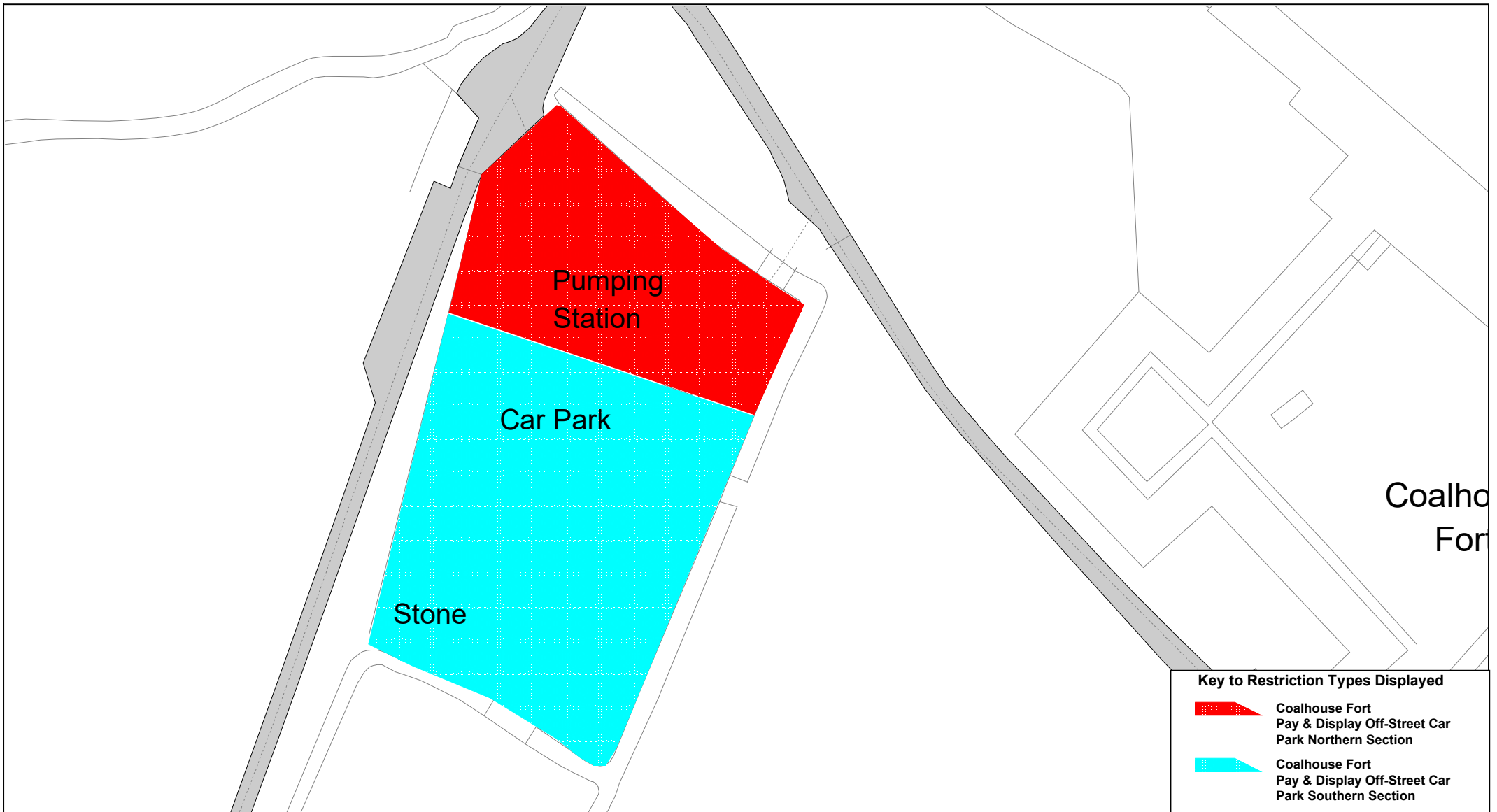
thurrock.gov.uk

**The Borough of Thurrock
(Off-Street Parking Places)
(Amendment No8)
Order 2022**

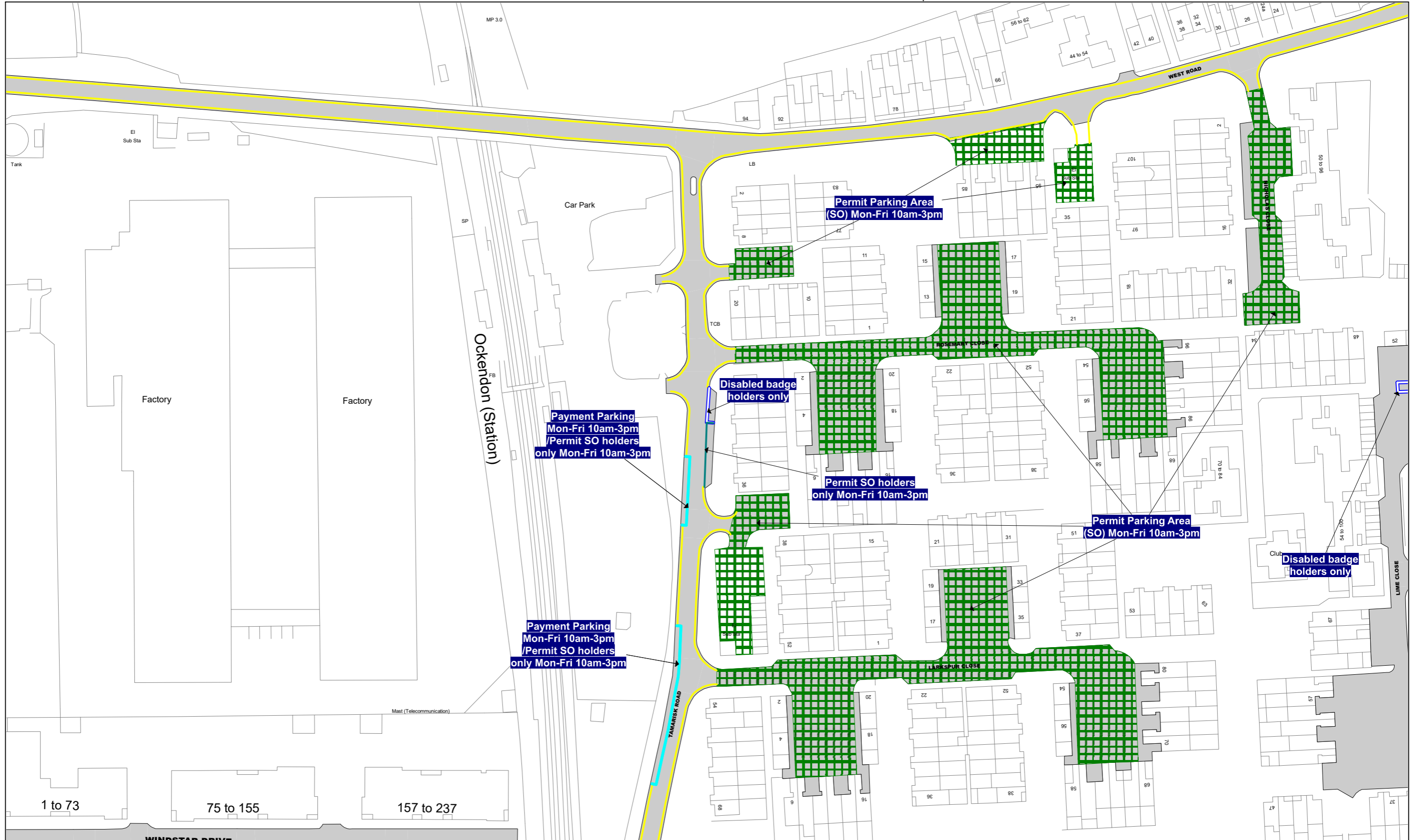
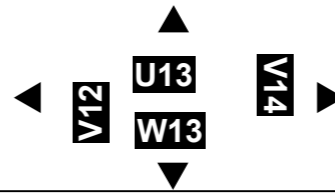


© Crown copyright. All rights reserved
Thurrock Council
Licence No. 100025457 2022

SCALE	1 : 750 @ A4
DATE	25/05/2022
DRAWING No.	2022-001 v1
DRAWN BY	BOM



SCALE	1 : 750 @ A4
DATE	15/06/2022
DRAWING No.	2022-002 v1
DRAWN BY	BOM



Scale: 1 : 1250 @ A3

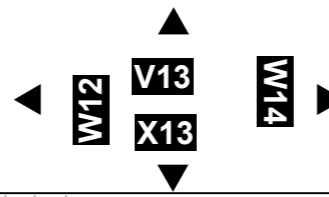
Order Title: The Borough of Thurrock
(Stopping, Waiting, Loading and On-street Parking) Order 2017

This map is reproduced from Ordnance Survey material with the permission of Ordnance Survey on behalf of the Controller of Her Majesty's Stationery Office © Crown Copyright. Unauthorised reproduction infringes Crown copyright and may lead to prosecution or civil proceedings.
Thurrock Council
Licence No: 100025457 2022

NOTE: SEE STATIC MAP SCHEDULE LEGEND FOR RESTRICTIONS DISPLAYED

 thurrock.gov.uk

Civic Offices, New Road
Grays, Essex, RM17 6SL



Scale: 1 : 1250 @ A3

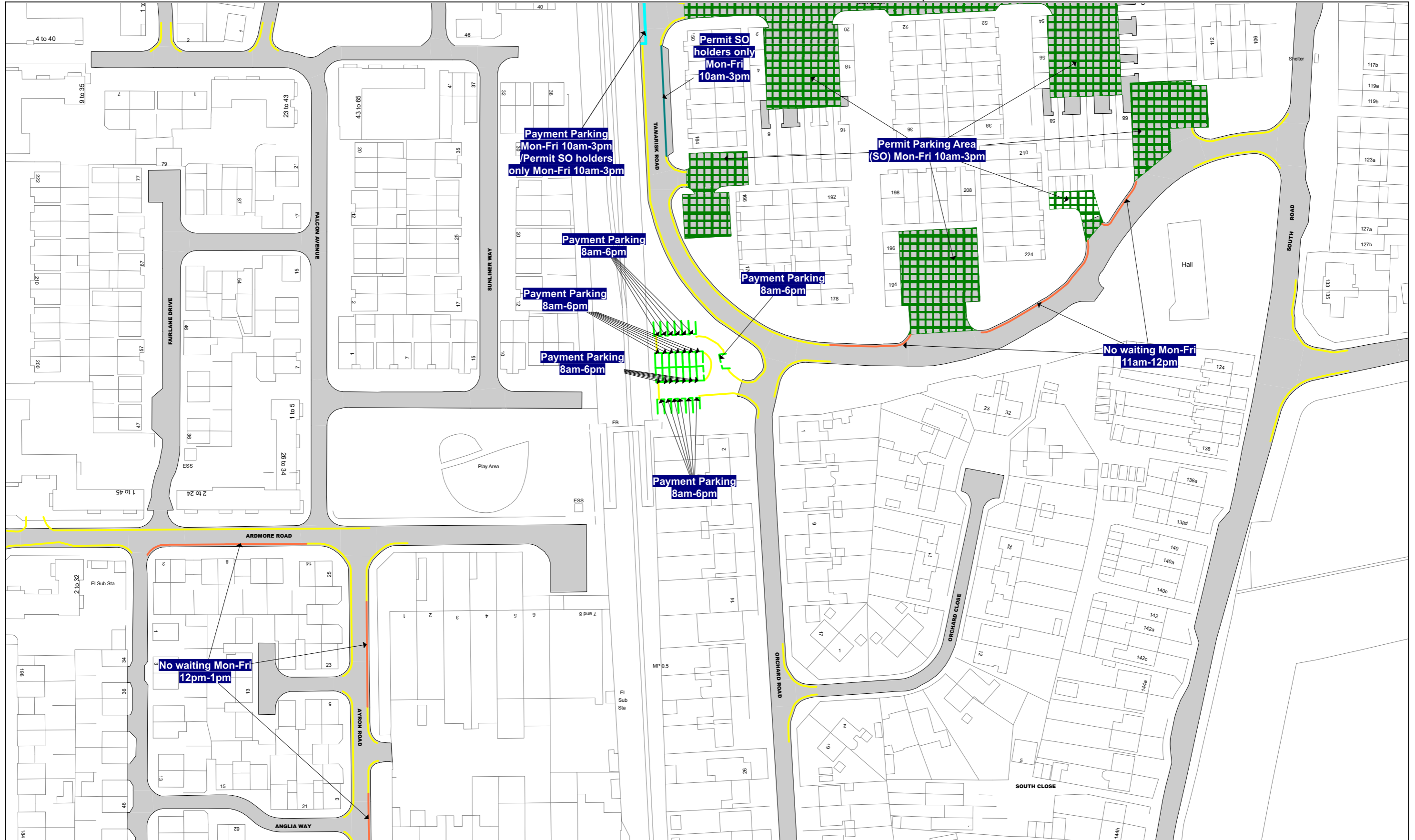
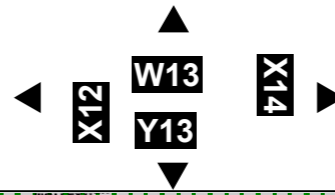
Order Title: The Borough of Thurrock
(Stopping, Waiting, Loading and On-street Parking) Order 2017

This map is reproduced from Ordnance Survey material with the permission of Ordnance Survey on behalf of the Controller of Her Majesty's Stationery Office © Crown Copyright. Unauthorised reproduction infringes Crown copyright and may lead to prosecution or civil proceedings.
Thurrock Council
Licence No: 100025457 2022

NOTE: SEE STATIC MAP SCHEDULE LEGEND FOR RESTRICTIONS DISPLAYED

 thurrock.gov.uk

Civic Offices, New Road
Grays, Essex, RM17 6SL



Scale: 1 : 1250 @ A3

Order Title: The Borough of Thurrock
(Stopping, Waiting, Loading and On-street Parking) Order 2017

This map is reproduced from Ordnance Survey material with the permission of Ordnance Survey on behalf of the Controller of Her Majesty's Stationery Office © Crown Copyright. Unauthorised reproduction infringes Crown copyright and may lead to prosecution or civil proceedings.
Thurrock Council
Licence No: 100025457 2022

NOTE: SEE STATIC MAP SCHEDULE LEGEND FOR RESTRICTIONS DISPLAYED

 thurrock.gov.uk

Civic Offices, New Road
Grays, Essex, RM17 6SL